

## The new standard in dyeing and finishing



### Designed for the Smart Factory

The brand new Sedomat 8000 controller range is specially designed to meet the latest requirements of Industry 4.0 and more. It is developed to match future standards through its high flexibility. The controllers contain all the benefits of the well proven Sedomat controllers combined with internal WiFi, RFID, flexible field bus and a high number of modular internal and external inputs and outputs. Energy counters can be directly connected via the high number of standardized connections. It already includes a PLC which can be adapted with programming tools and can be optionally equipped with internal and external I/O boards to meet the different requirements of yarn, fabric and other types of dyeing and finishing machines.

### Top-level, high quality products

Solutions for dyeing and finishing automation need expert systems. The Sedomat 8000 series brings together the knowledge of more than 40 years machine automation in dyeing and finishing. It is tested for harsh environments and build according to the highest quality standards. The high performance hardware offers an impressive user experience.

## Connectivity

In the Sedomat 8000 series internal I/Os and internal SedoIO board can be built in. External SedoIO modules can be connected via interfaces like CANopen®, PROFIBUS DP® and Modbus RTU (RS232). This way, the controllers can be customized to the requirements starting from simple lab machine to complex dyeing and finishing machines.

SedoIO modules offer perfect flexible options to select the necessary I/O needs.

Ethernet TCP/IP network integration for SedoMaster and communication with other dye house systems are available. OPC UA for easy and open data exchange on machine level (M2M) and with supervisory systems.

## Web based

Web based remote service and control can be guaranteed everywhere worldwide via e.g. optional SIM card. In order to meet the highest quality standards, production must be monitorable in real time. The SedoAPP is a powerful tool that allows real-time control from anywhere at any time.

## Flexibility and look ahead

With flexible, parallel functions, there are no limits to productivity. With the Sedomat 8000 series, batches can be processed simultaneously and a preview of several subsequent batches can be displayed.

## Unlimited applications

Master/slave operation, logging and visualization of process data, support of languages, support of dosing curves, data logging via cloud services, integration with chemical dispensing and automation of dye kitchen, ...

## Sedomat 8007

The compact Sedomat 8007 with a 7" touch display is specially designed for lab machines and data acquisition. It can be equipped with an internal I/O board or can be expanded with external SedoIO modules.

## Sedomat 8010

The Sedomat 8010 can be equipped with internal I/O boards or expanded with two internal SedoIO boards. External SedoIO modules can be connected via bus connection. Having a 10.1" touch display, it offers an easy operation of the modern user interface.

## Sedomat 8015

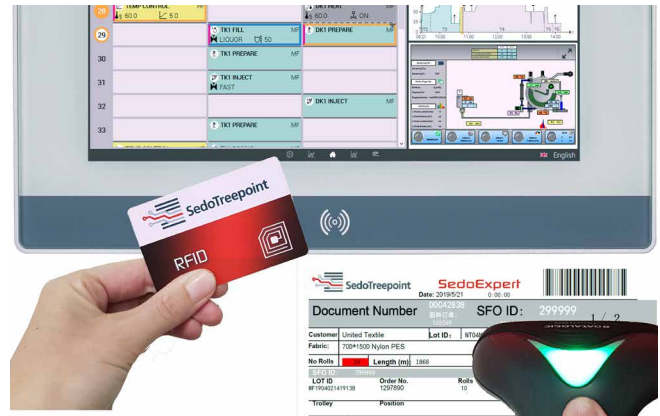
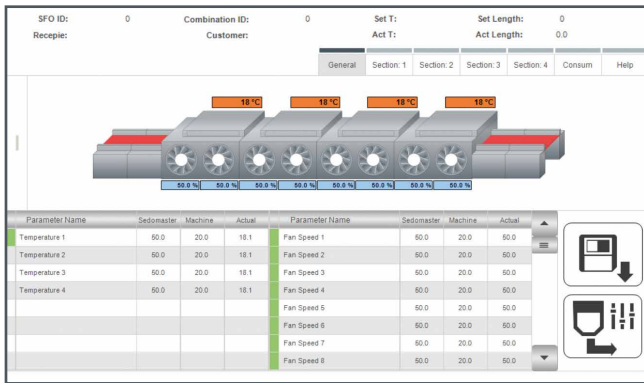
The Sedomat 8015 can be equipped with internal I/O boards or expanded with four SedoIO boards. External SedoIO modules can be connected via bus connection. The big 15.4" touch display offers a perfect operation and control of all types of machines.



Sedomat 8007 ▲



Sedomat 8010 ▲



## Continuous machine

The Sedomat 8000 series is optimized for use on textile finishing machines. The Sedomat 8015 offers a big user interface and is the ideal choice for control and supervision of machines.

## Data acquisition

The Sedomat 8000 series can be used for data acquisition or as a production client for SedoExpert. RFID support offers the perfect precondition.

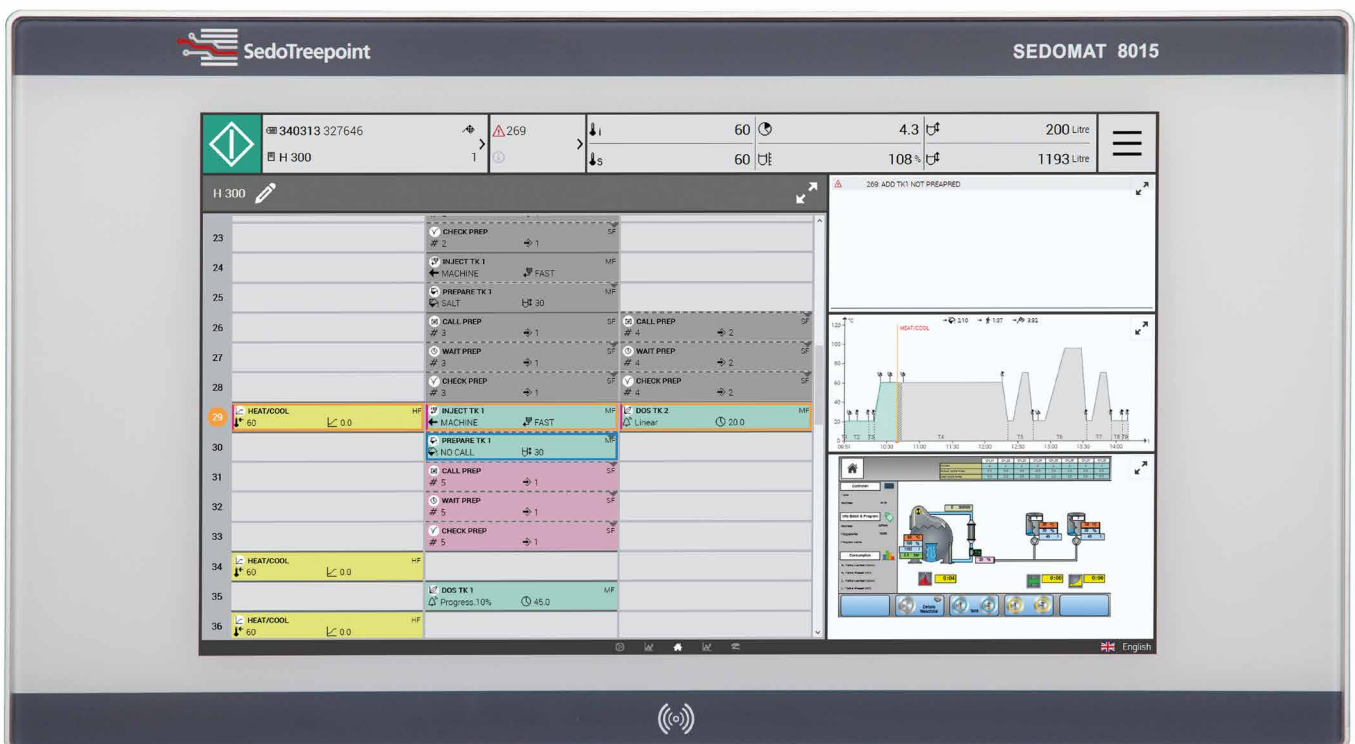
## Internal I/O board options

- Embedded I/O board IO16/2 with 16 digital I/Os, 4 software counters (2 kHz), 2 hardware counters (10 kHz), 2 analog inputs, 2 analog outputs
- I/O board IO32/6 with 32 digital I/Os, 4 software counters (2 kHz), 4 hardware counters (10 kHz), 6 analog inputs, 6 analog outputs

## SedoIO options

- Internal SedoIO modules with boards (analog, digital, relay)
- External SedoIO modules

For more details refer to SedoIO brochure.



▲ Sedomat 8015

Specifications		Sedomat 8007	Sedomat 8010	Sedomat 8015
Capacitive touch display		7"	10,1"	15,4"
Bus systems**	CANopen®	✓	✓	✓
	PROFIBUS DP®*	✓	✓	✓
	Modbus RTU (RS232/485)*	✓	✓	✓
Internal I/O boards	I/O board IO16/2*	1	1	1
	I/O board IO32/6*	-	1	2
SedoIO	Internal modules*	-	2	4
	External modules*	✓	✓	✓
Connectors	RS232 interface	✓	✓	✓
	RS485 interface	✓	✓	✓
Ethernet (RJ45), 1 GBit/s		2	2	2
USB 2.0 port / USB 3.1 port		1/1	1/1	1/1
WiFi		✓	✓	✓
RFID reader*		✓	✓	✓
mPCIe slot		✓	✓	✓
mSATA slot		✓	✓	✓
IP67 protection		✓	✓	✓
Power supply 24 V DC, 1.0 A		✓	✓	✓
Ambient temperature 0 - 60 °C (32 - 140 °F)		✓	✓	✓
Dimensions (wxhxd)		218 x 160 x 65 mm	285 x 216 x 65 mm	483 x 266 x 65 mm
Panel cut-out (wxh)		203 x 147 mm ± 1 mm	270 x 196 mm ± 1 mm	442 x 249 mm ± 1 mm

\*Optional configuration, customized to individual needs.

\*\*Further bus systems on request.



▲ Connections and interfaces Sedomat 8010

Head office:  
**Sedo Treepoint GmbH, Germany**  
 Neuwies 1, D-35794 Mengerskirchen  
 Phone: + 49 6476 31-0, Fax: +49 6476 31-31  
[sedo@sedo-treepoint.com](mailto:sedo@sedo-treepoint.com)

Sedo Treepoint, Switzerland  
 Phone: + 41 43 488 11 88, Fax: +41 43 488 11 89  
[switzerland@sedo-treepoint.com](mailto:switzerland@sedo-treepoint.com)

Sedo Treepoint, Belgium  
[belgium@sedo-treepoint.com](mailto:belgium@sedo-treepoint.com)

Sedo Treepoint, China  
[china@sedo-treepoint.com](mailto:china@sedo-treepoint.com)

Sedo Treepoint, India  
[india@sedo-treepoint.com](mailto:india@sedo-treepoint.com)

Sedo Treepoint, Singapore  
[singapore@sedo-treepoint.com](mailto:singapore@sedo-treepoint.com)

Sedo Treepoint, USA  
[usa@sedo-treepoint.com](mailto:usa@sedo-treepoint.com)

Technical specifications are subject to change without prior notice.