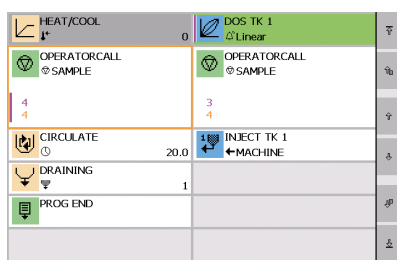


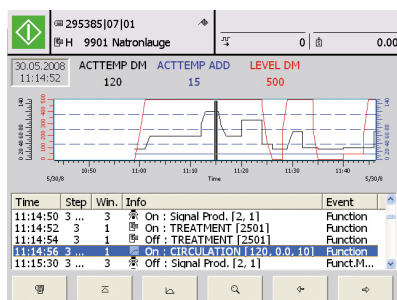


Touch screen controller

Cost-efficient, high resolution, with internal I/O



Program view



Logging view

The new Sedomat 1808+ gives a better user experience by offering a modern design and user-friendly interface. Now being water-proof to IP67, it guarantees high quality and reliability for rugged environments. Having RFID support, it offers new possibilities in data acquisition.

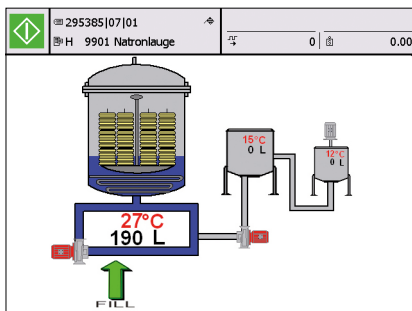
Looking for a cost effective solution for a high degree of automation on your machines? Then the Sedomat 1808+ is the right product for you! Offering state-of-the-art developments such as user friendly color touch screen interface, internet technology, USB connectivity and many other cutting edge features.

Running on Windows CE operating system makes it the ideal choice for an industrial environment. The internal I/O of the Sedomat 1808+ can be configured to meet exactly the requirements of yarn, fabric and other types of dyeing machines with different degrees of complexity.

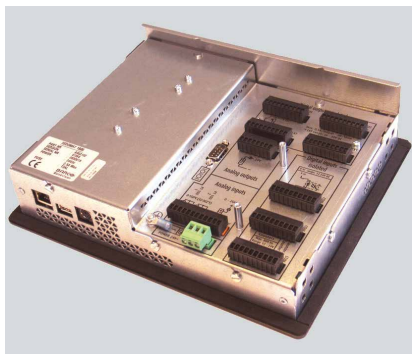
For a more sustainable competitive production

Applications:

- Connection to the SedoMaster central management system. Integration in a total system including color management.
- Integration with automatic dyestuff/chemical dispensing and automation of dye kitchen.
- Master/slave-operation.
- Storage of a high number of dyeing programs.
- Logging of temperature curve, functions, alarms, etc. Visualization of process information on the Sedomat or on a remote PC.
- Support of different languages and character sets, e.g. Chinese.
- Linear, progressive and degressive dosing curves.
- Control of temperature, speed, pH, flow, pressure, etc.
- Can be used as data acquisition terminal.
- Data logging via cloud services.
- RFID support for e.g. operator logon/logoff.



Yarn machine



Backside

Concept:

- The configurable internal I/O matches the requirements of different types of dyeing machines.
- PC based: built around a high performance state of the art PC-CPU board.
- Color touch screen: intuitive user interface, easily adopted by operators. Any function (heating, filling, etc.) can be activated by just touching this function on the screen. Push buttons on screen replace push buttons on panel.
- USB interface: for inexpensive devices like memory keys, (copy/save programs) and other PC peripherals.
- Internet technology (integrated web server): for remote access from any PC in the plant network.
- Windows CE: robust operating system tailored for industrial applications.
- Ethernet TCP/IP network: link to SedoMaster and communication with other dye house systems.
- OPC: OLE for Process Control: integration with supervisory systems.
- Internal PLC and PC programming tools for 100% adaptation to the features of your dyeing machine.
- Options:
 - Barcode reader for tracking purposes
 - USB memory stick
 - USB Interface extension with panel wall connection
 - Touch screen stylus

Specifications:

Display:

7,0" TFT, color, 800 x 640 pixels, touchscreen

Internal I/O:

24 digital inputs,
32 digital outputs,
2 PT 100 inputs,
3 analogue inputs 0-20mA,
4 analogue outputs 0-20mA,
2 fast counter inputs

Interfaces:

RS232 for PC programming tools,
Ethernet: link to SedoMaster and other network systems, USB for memory key and other PC peripherals

Power supply: 24V DC, 2,0 A

Ambient temperature:

0 - 50°C (32 - 122°F)

Dimensions:

258,5 x 216 x 67 mm (w x h x d)

Panel cut out:

243 x 199 (w x h) ± 1mm

Head office:

Sedo Treepoint GmbH, Germany

Neuwies 1, D-35794 Mengerskirchen

Phone: + 49 6476 31-0, Fax: +49 6476 31-31

sedo@sedo-treepoint.com

Sedo Treepoint, Switzerland

Phone: + 41 43 488 11 88, Fax: +41 43 488 11 89

switzerland@sedo-treepoint.com

Sedo Treepoint, Belgium

belgium@sedo-treepoint.com

Sedo Treepoint, China

china@sedo-treepoint.com

Sedo Treepoint, India

india@sedo-treepoint.com

Sedo Treepoint, Singapore

singapore@sedo-treepoint.com

Sedo Treepoint, USA

usa@sedo-treepoint.com

Technical specifications are subject to change without prior notice.