

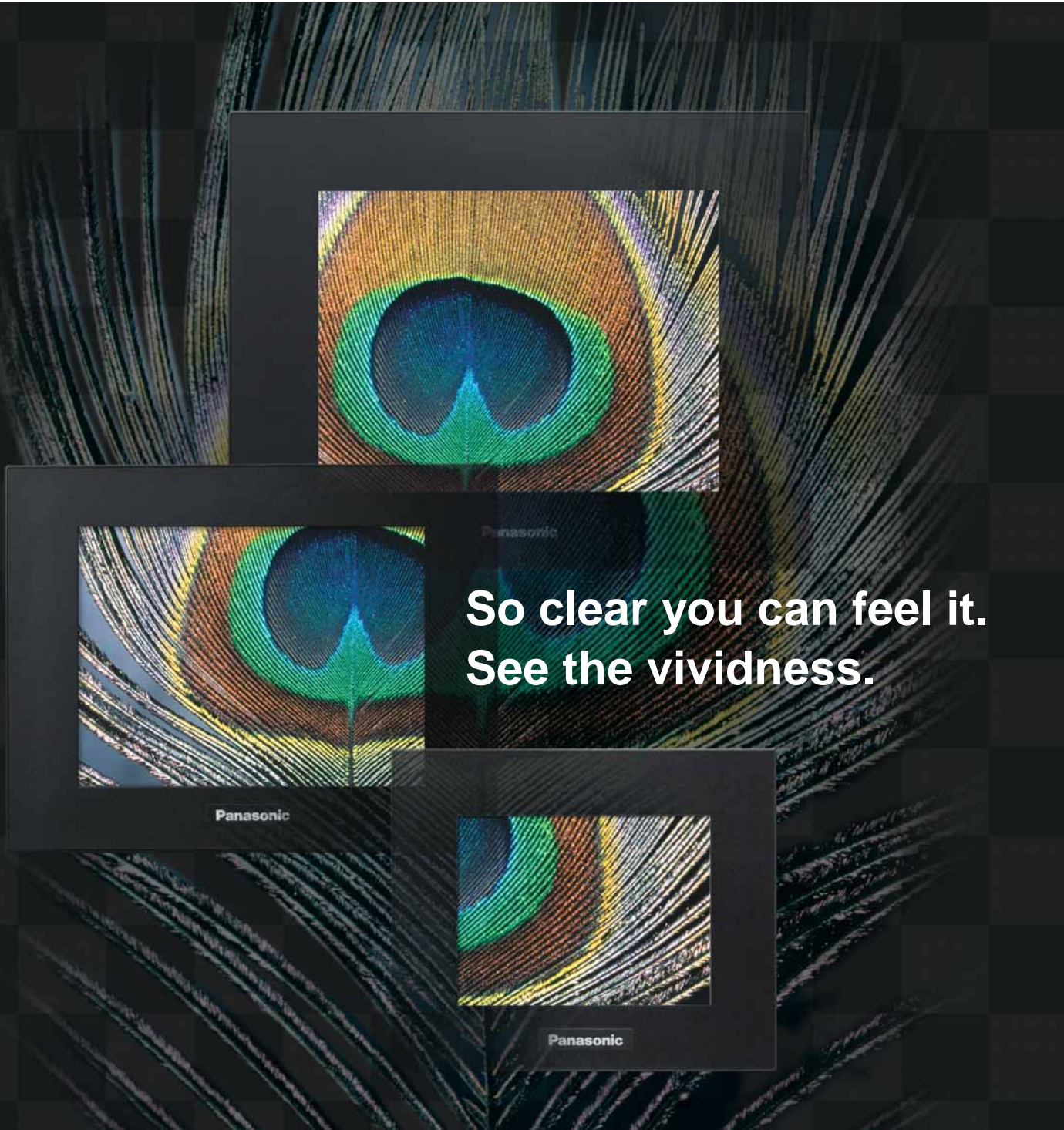
**Panasonic**  
ideas for life

# GTseries

Programmable Display

GT01 GT01R GT05 GT11 GT21C GT32

**NEW**



**So clear you can feel it.  
See the vividness.**

Programmable Display GT Series  
ARCT1B294E '07.12

**New**

Buy: [www.ValinOnline.com](http://www.ValinOnline.com) | Phone 844-385-3099 | Email: [CustomerService@valin.com](mailto:CustomerService@valin.com)

All LCD pictures in this catalog are simulated images.

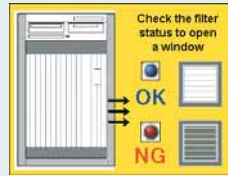
**GT Series compact programmable displays pursuing  
the fundamentals of communication  
ultimately brings out the beauty of functionality.  
Look, listen, and touch.**



## Improved visibility and operability for operators

### ■ Instructions with color pictures

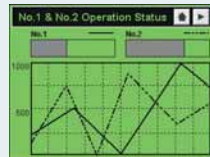
GT32T and GT05S are capable of displaying 4,096-color images. Which allows you to display instructions with pictures of limit samples.



### ■ Three-color LED backlights, which allow for checking the machine status at a glance

GT05M, GT05G, GT11, GT01R, and GT01 can display screens in three different colors; for example, green under normal conditions, orange during operation, and red during emergencies.

GT05M/GT05G



GT11

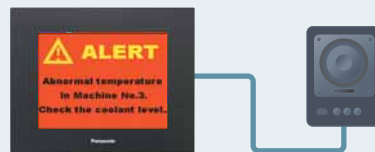
Parameter Set		MENU
Product B	X	13.580
Product C	Y	203.723
Type in	Z	178.223

GT01R/GT01



### ■ Sound output function, which eliminates the need of monitoring the screen

GT32T1 can communicate information to operators through voice messages or melodies, eliminating the need to monitor the screen. The sound files are in WAV format, which can be easily prepared by a PC.



Abnormal temperature in Machine No. 3. Check the coolant level.

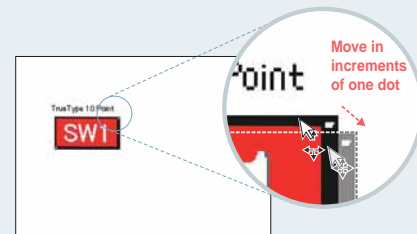
### ■ Quick response

The response speed of programmable displays largely depends on the communication speed of the controller, such as a PLC; as well as that of the displays themselves. GT series displays support high-speed communications of up to 115.2 kbps.

### ■ High flexibility screen design

The operability of a display largely depends on the screen design. Our GT series uses an analog-touch system, which TrueType fonts can display 10 to 240-dot\* characters. In addition, character and switch locations on a screen can be adjusted in increments of one dot. Therefore, highly visible screen designs are possible.

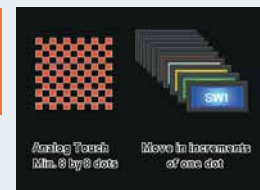
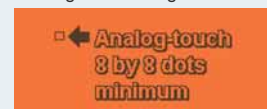
\* The maximum size varies depending on the model.



#### "TrueType fonts"



#### "Analog-touch design"

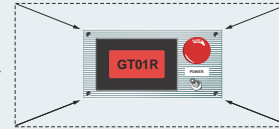
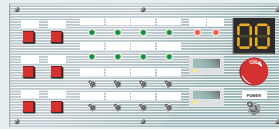


**NEW** Since the restriction on the usable TrueType fonts has been removed, it is now possible to choose a font focusing on the screen image and visual quality.



**Cost and space saving**

Eliminates the need for arranging many parts, securing a stock of parts, and wiring each switch.



Improves the design and operability  
Easy to change the settings by model and user

**Wide variety of functions**

**“Write Device function”**



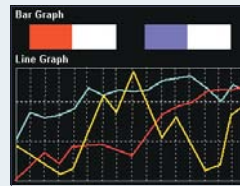
This function writes the PLC values or turns bits on/off according to the PLC status or the screen No.

**“Recipe function”**



Settings by product item and other data (up to 3,600 words) can be transferred to PLC, simplifying PLC programming.

**“Graph function”**



You can identify the production or operation status in line or bar graph form.

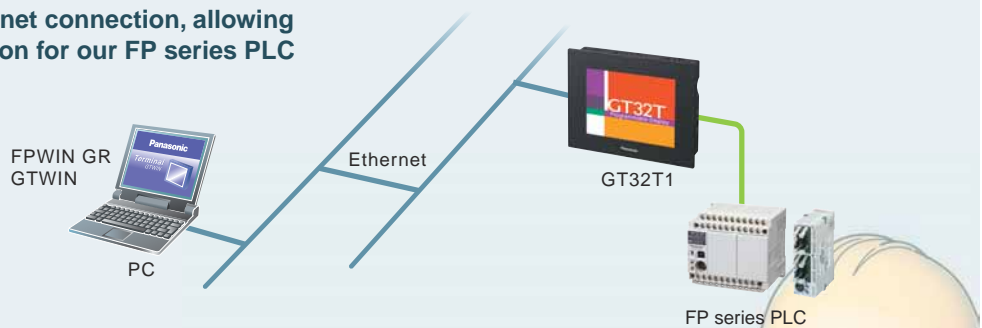
**“Flow Display function”**



A flowing message of up to 64 characters (two-byte) can be displayed at the bottom of the screen. (128 messages)

**Simple maintenance**

**GT32T1 supports Ethernet connection, allowing for the “through” function for our FP series PLC in a remote location.**



**Maintenance-free LED backlight (GT01/GT01R/GT05/GT11/GT21C)**

The use of the white LED backlight eliminated backlight replacement work.

**Transformer-isolated power supply (GT05/GT32)**

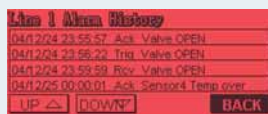
The isolated power supply enhances the reliability.

**Alarm list (GT05/GT11/GT21C/GT32)**

Alarm activation, check, and recovery can be recorded and displayed.

**Firmware upgrading**

The display firmware is automatically upgraded when screen data is transferred.

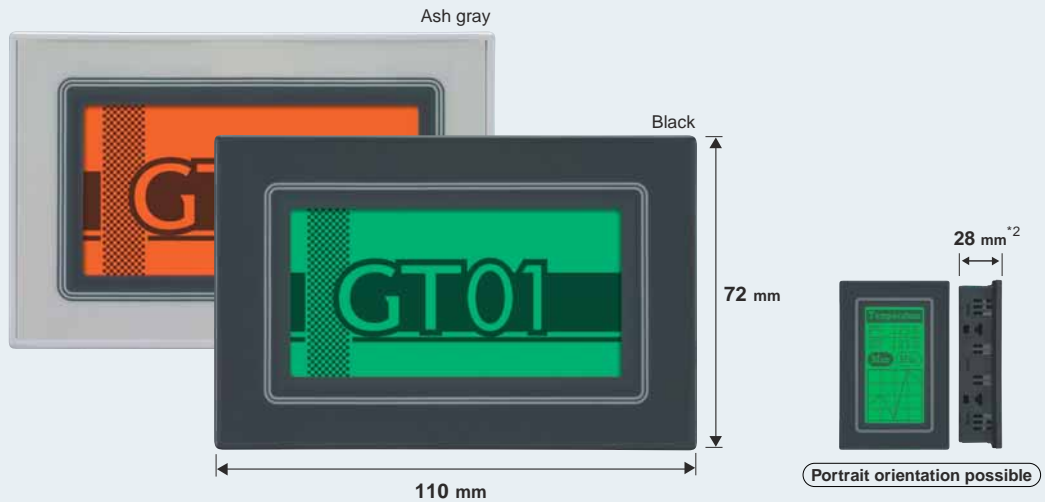
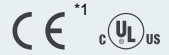


(GT11)

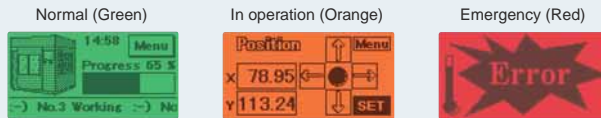


(GT21C)

Ultra-compact 3-inch display with a full load of functions required for control panels

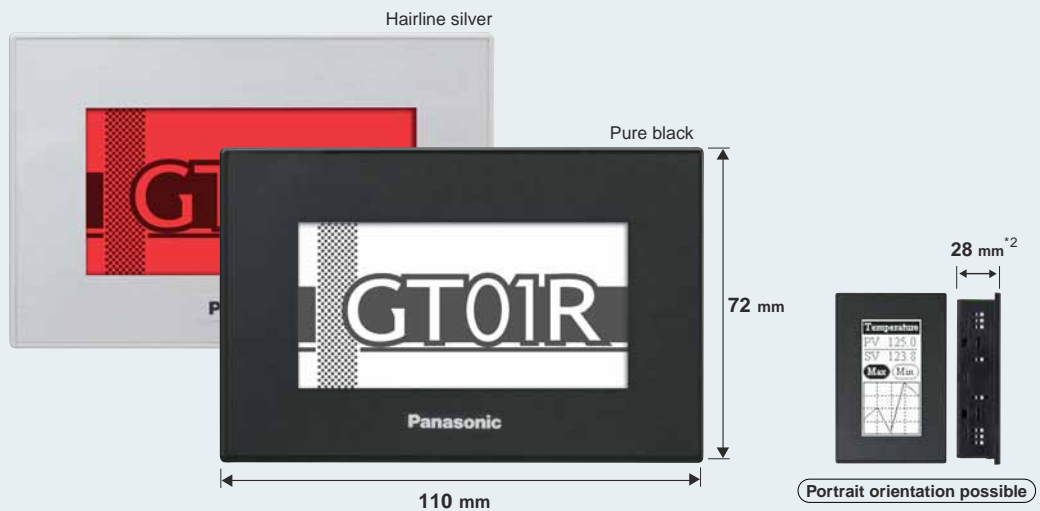
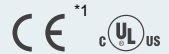


Three-color backlight shows the equipment status.



Only one cable is required to connect your GT directly to our **FP series** or Mitsubishi Electric **FX series**, substantially reducing the man-hours for wiring. (5 V DC)

High-contrast clear display with excellent visibility achieved by the red and white backlight



Screens can be displayed in white, red, or pink. Under normal conditions, the high-brightness white LED provides high visibility. During emergencies, the red LED allows you to check the status at a glance.



\*1: CE marking is not available for AIGT0032B1(H1), AIGT0232B1(H1).

\*2: When the panel thickness is 5 mm, the screw head of the mounting bracket protrudes 4 mm.

\*3: Note that the COM port connector projects an additional 7mm. Also take the cable diameter must be taken into account.

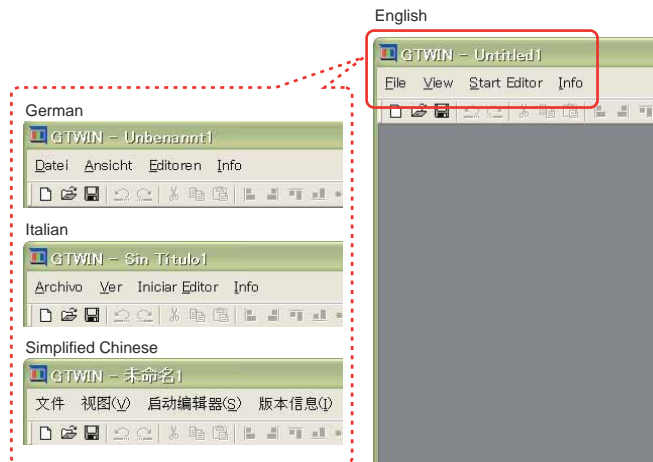
• The panel face protection sheet for the GT series is available as an option.

The user-friendly interface makes screen creation easier.



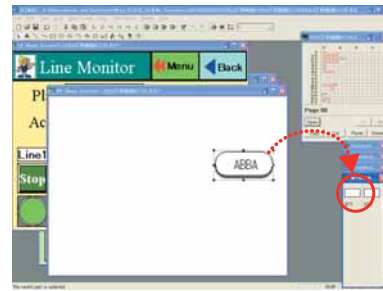
### Multilingual menu and dialog

The menu can be indicated in Japanese/English/Simplified Chinese/Korean/German/Italian/Spanish/French.



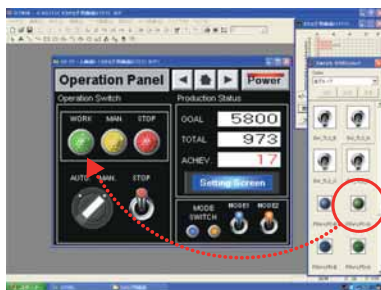
### Just drag and drop your original parts to be registered.

You can also register your preset original parts easily by drag-and-drop operations.



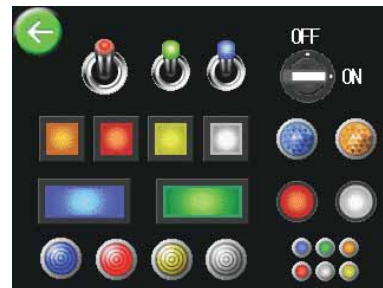
### Simply drag and drop parts.

You can easily create screens by just dragging parts from the library and dropping them anywhere you want.



### 256-color 3D buttons (for GT05S/GT21C/GT32T)

3D-design buttons with higher visibility and operability are available.



### More user-friendly parts libraries

In the previous version, the required parts library had to be selected from the menu every time it was needed. The new version displays a list of parts libraries, making them more user-friendly. You can also freely set the parts library window size.



### Screen copy in bitmap form

You can output screen images in bitmap form and use them in off-the-shelf applications. This is useful for preparing equipment operation manuals.

### Firmware upgrading function

Before transferring screen data, select "Automatic firmware update" to automatically upgrade the display if the display version is older than the firmware version in GTWIN. You can keep the firmware version upgraded by using the latest version of GTWIN.

• GTWIN Ver. 2.8 or later is not compatible with Windows 95, 98, Me or NT. Please use Ver. 2.71. The difference file can be downloaded from our website.

You can download a trial version of GTWIN Ver. 2 from our Website. (Registration is required.)

Models listed are the models that have been evaluated as of November, 2007.

Company	Series	Model	GT01/GT01R/GT05/GT11/GT21/GT32		
			RS232C type	RS422 (RS485) type*2	
Matsushita Electric Works	FP series	FP-X	⊙	○	
		FPΣ	⊙	○	
		FP-e	⊙	○	
		FP0	⊙	○	
		FP2	⊙	○	
		FP2SH	⊙	○	
Mitsubishi Electric*1	FX series	FX0N	○	⊙	
		FX1S	○	⊙	
		FX1N	○	⊙	
		FX1NC	○	⊙	
		FX2N	○	⊙	
		FX2NC	○	⊙	
		FX3UC	○	⊙	
	Q series	Q00CPU	⊙		
		Q01CPU	⊙		
		Q00JCPU	○		
		Q00HCPU	○		
		Q25HCPU	⊙		
		Q12HCPU	⊙		
		Q06HCPU	⊙		
		Q02HCPU	⊙		
			Q02CPU	⊙	
	A series	A1N	○		
		A2N	○		
		A3N	○		
		A1S	○		
		A1SJ	○		
		A2SH	○		
		A1SH	○		
		A2CCPU24	⊙		
	Omron*1	C series	C200H	○	
			C200HS	⊙	
			C500	○	
C500F			○		
C1000H			○		
C2000			○		
C2000H			○		
C1000HF			○		
C20H			⊙		
C28H			⊙		
C40H			⊙		
C120			○		
C120F			○		
CQM1-CPU42			⊙		
SRM1-C02			⊙		
CPM2A			⊙		
CPM1-20CDR-A			○		
CQM1H-CPU21		⊙			
CPM2C		⊙			
CPM2B		⊙			
α series		C200HE-CPU32-Z	○		
		C200HE-CPU32	○		
		C200HG-CPU33-Z	○		
		C200HG-CPU33	○		
		C200HG-CPU53-Z	○		
		C200HG-CPU53	○		
		C200HX-CPU34-Z	○		
	C200HX-CPU34	○			
	C200HX-CPU54-Z	○			
	C200HX-CPU54	○			
	C200HE-CPU42-Z	⊙			
	C200HE-CPU42	⊙			
	C200HG-CPU43-Z	⊙			
C200HG-CPU43	⊙				
C200HG-CPU63-Z	⊙				
C200HG-CPU63	⊙				
C200HX-CPU44-Z	⊙				
C200HX-CPU44	⊙				

Company	Series	Model	GT01/GT01R/GT05/GT11/GT21/GT32	
			RS232C type	RS422 (RS485) type*2
Omron*1	α series	C200HX-CPU64-Z	⊙	
		C200HX-CPU64	⊙	
		C200HX-CPU65-Z	⊙	
		C200HX-CPU85-Z	⊙	
		C200HX-CPU64-Z	○	
	CV series	CV500	⊙	
		CV1000	⊙	
		CVM1	⊙	
	CS1 series	CS1H-CPU67	⊙	
		CS1H-CPU66	⊙	
		CS1H-CPU65	⊙	
		CS1H-CPU64	⊙	
		CS1H-CPU63	⊙	
		CS1G-CPU45	⊙	
		CS1G-CPU44	⊙	
		CS1G-CPU43	⊙	
		CS1G-CPU42	⊙	
CJ1 series		CJ1H	⊙	
	CJ1M	⊙		
	CJ1G	⊙		
CP1 series	CP1H	○		
	CP1L			
Toshiba Machine*1	TC mini series		⊙	
			Models with RS232 port	Models with RS485 port
Yokogawa Electric*1	FA-M3 series	F3SP59-7S	⊙	
		F3SP58-6S	⊙	
		F3SP58-6H	⊙	
		F3SP53-4S	⊙	
		F3SP53-4H	⊙	
		F3SP38-6S	⊙	
		F3SP38-6N	⊙	
		F3SP35-5N	⊙	
		F3SP28-3S	⊙	
		F3SP28-3N	⊙	
		F3SP25-2N	⊙	
F3SP21-0N	⊙			
KEYENCE*1	KV series	KV-10/16/24/40	⊙	
		KV700	⊙	○
		KV1000	⊙	○
ALLEN-BRADLEY*1	Micro Logic series	MicroLogix1000	⊙	
	Models that support protocol	SLC-5/03	⊙	
Siemens*1	SLC-500 series	SLC-5/04	⊙	
		CPU222	○	⊙
	S7-200 series	CPU216	○	⊙
		CPU215	○	⊙
		CPU214	○	⊙
LG*1	MASTER-K series	CPU212	○	⊙
		80S	⊙	
		200S	⊙	
		300S	○	
1000S	○			
Modbus*1	Models that support RTU protocol	*3	⊙	⊙
General-purpose serial*1	MEW dedicated protocol	*3	⊙	⊙

\*1. PLCs other than Matsushita Electric Works FP series may be limited in the type of device that can be used and addresses. Please see manual for details.

\*2. Communication may not be possible when using RS485 depending on the sending and receiving timing with the other device.

\*3. We cannot specify what other device you should use; therefore, please test it using the actual equipment before using.

⊙: Direct connection is possible to the CPU unit of the PLC.

○: Connection is possible using the communications unit or a signal conversion cable, etc.

(Example: The QJ71C24N or QJ71C24N-R2 calculator link unit is required when using the Mitsubishi Q Series.)

×: Connection is not possible

Blank: Not evaluated.

For details about devices and addresses that can be used, please refer to the GT Series Technical Manual "Connecting and Communicating with the PLCs". This manual can be downloaded from our site.

### ■ Main Unit and Tool Software

Product name	Description			Part number	
	LCD	Power supply	Communication port		
GT01 Main unit	STN monochrome (green/orange/red, backlight)	5V DC	RS232C	Black	AIGT0030B1
				Ash gray	AIGT0030H1
			RS422 (RS485)	Black	AIGT0032B1
		Ash gray		AIGT0032H1	
		24V DC	RS232C	Black	AIGT0030B
				Ash gray	AIGT0030H
RS422 (RS485)	Black		AIGT0032B		
	Ash gray	AIGT0032H			
GT01R Main unit	STN monochrome (white/red/pink, backlight)	5V DC	RS232C	Pure black	AIGT0230B1
				Hairline silver	AIGT0230H1
			RS422 (RS485)	Pure black	AIGT0232B1
		Hairline silver		AIGT0232H1	
		24V DC	RS232C	Pure black	AIGT0230B
				Hairline silver	AIGT0230H
RS422 (RS485)	Pure black		AIGT0232B		
	Hairline silver	AIGT0232H			
GT11 Main unit*1	STN monochrome (green/orange/red, backlight)	24V DC	RS232C	Black	AIGT2030B
				Ash gray	AIGT2030H
			RS422 (RS485)	Black	AIGT2032B
Ash gray	AIGT2032H				
GT05M Main unit	STN monochrome (white/red/pink, backlight)	24V DC	RS232C	Pure black	AIG05MQ02D
				Hairline silver	AIG05MQ03D
			RS422 (RS485)	Pure black	AIG05MQ04D
				Hairline silver	AIG05MQ05D
GT05G Main unit	STN monochrome (green/orange/red, backlight)	24V DC	RS232C	Pure black	AIG05GQ02D
				Hairline silver	AIG05GQ03D
			RS422 (RS485)	Pure black	AIG05GQ04D
				Hairline silver	AIG05GQ05D
GT05S Main unit	STN color	24V DC	RS232C	Pure black	AIG05SQ02D
				Hairline silver	AIG05SQ03D
			RS422 (RS485)	Pure black	AIG05SQ04D
				Hairline silver	AIG05SQ05D
GT21C Main unit	STN color	24V DC	RS232C	Pure black	AIGT2230B
				Hairline silver	AIGT2230H
			RS422 (RS485)	Pure black	AIGT2232B
				Hairline silver	AIGT2232H
GT32M Main unit	STN monochrome	24V DC	RS232C	Pure black	AIG32MQ02D
				Hairline silver	AIG32MQ03D
			RS422 (RS485)	Pure black	AIG32MQ04D
				Hairline silver	AIG32MQ05D
GT32T0 Main unit	TFT color	24V DC	RS232C	Pure black	AIG32TQ02D
				Hairline silver	AIG32TQ03D
			RS422 (RS485)	Pure black	AIG32TQ04D
				Hairline silver	AIG32TQ05D
GT32T1 Main unit	TFT color	24V DC	RS232C	Pure black	AIG32TQ12D
				Hairline silver	AIG32TQ13D
			RS422 (RS485)	Pure black	AIG32TQ14D
				Hairline silver	AIG32TQ15D
Terminal GTWIN Ver.2 Tool kit*2	English version	GTWIN CD-ROM GT Series Technical Manual (English version)		AIGT8001V2	
Terminal GTWIN Upgrade version*2	English version	Upgrades Terminal GTWIN Ver. 1 to Ver. 2.		AIGT8001V2R	

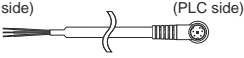
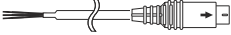
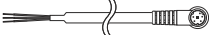
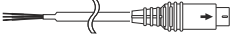
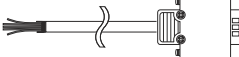
\*1: For GT11, a white LED backlight type is also available (made-to-order). Replace the sixth digit of the Part No. with "1" to order it. (Example: AIGT2130B)

\*2: GTWIN Ver. 2.8 or later is not compatible with Windows 95, 98, Me or NT. Please use Ver. 2.71. The difference file can be downloaded from our website



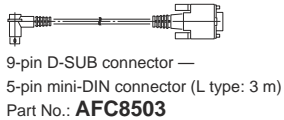
## ■ Cables

### ● PLC connection cable

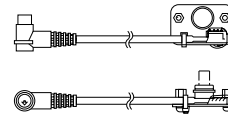
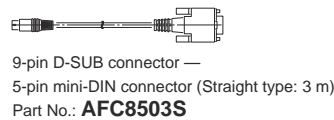
Programmable Display	Connection cable	PLC
GT01/GT01R (5 V DC, RS232C)	 <p>Part No.: <b>AIGT8142*</b>, PLC connection cable (2 m), 5-pin mini-DIN connector — 4 single wires + Shielding wire</p>	Matsushita Electric Works FP Series
GT01/GT01R (5 V DC, RS422/RS485)	 <p>Part No.: <b>AIGT8152*</b>, PLC connection cable (2 m), 8-pin mini-DIN connector — 6 single wires + Shielding wire</p>	Mitsubishi Electric FX Series
GT Series (24 V DC, RS232C)	 <p>Part No.: <b>AIGT8162</b>, PLC connection cable (2 m), 5-pin mini-DIN connector — 3 single wires + Shielding wire AIGT8165 (5 m) and AIGT8160 (10 m) are also available.</p>	Matsushita Electric Works FP Series
GT Series (24 V DC, RS422/RS485)	 <p>Part No.: <b>AIGT8175</b>, PLC connection cable (5 m), 8-pin mini-DIN connector — 4 single wires + Shielding wire</p>	Mitsubishi Electric FX Series
GT Series (24 V DC, RS232C)	 <p>Part No.: <b>AIP81842</b>, PLC connection cable (2 m), 9-pin D-SUB connector — open wire</p>	Matsushita Electric Works FP2/FP2SH COM port, 9-pin D-SUB connector example, CCU

Note: This cable is for GT01/GT01R, and power is supplied through the TOOL port.

### ● Screen data transmission cable (for DOS/V computers)



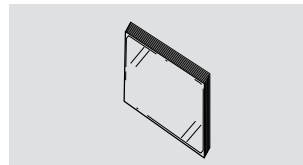
### ● Tool port panel extension cable



Part No.: **AFC8532**

\*For GT05/GT32, please use a commercially available A-B type USB cable.

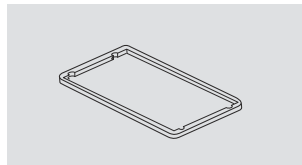
## ■ Options



### ■ Panel face protection sheets

10 sheets in a set (option)

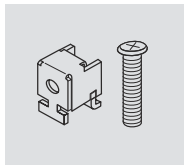
<b>GT01</b>	Part No.: <b>AIGT080</b>
<b>GT01R</b>	Part No.: <b>AIGT080R</b>
<b>GT05</b>	Part No.: <b>AIG05800</b>
<b>GT11</b>	Part No.: <b>AIGT280</b>
<b>GT21</b>	Part No.: <b>AIGT28021</b>
<b>GT32</b>	Part No.: <b>AIG32800</b>



### ■ Waterproof packing

Waterproof packing (for replacement), 10 pieces in a set  
Package includes one set. One set is installed on main unit.

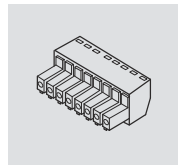
<b>GT01, GT01R</b>	Part No.: <b>AIGT081</b>
<b>GT05</b>	Part No.: <b>AIG05810</b>
<b>GT11</b>	Part No.: <b>AIGT181</b>
<b>GT21</b>	Part No.: <b>AIGT28121</b>
<b>GT32</b>	Part No.: <b>AIG32810</b>



### ■ GT01/GT01R/GT11 mounting parts

5 sets of mounting parts (4 parts/set)  
Package includes one set.

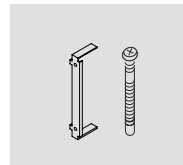
Part No.: **AIGT083**



### ■ Spare connector

COM. port connectors, 5 connectors in a set  
One piece is installed on main unit.

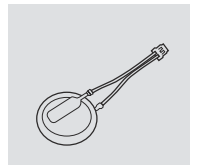
Part No.: **AIGT084**



### ■ GT05/GT21C/GT32 mounting parts

5 sets of GT21C/GT32 mounting parts (2 parts/set)  
Package includes one set.

Part No.: **AIGT28321**



### ■ GT05/GT32 backup battery

\* For GT11 and GT21C, please purchase a commercially available CR2032 battery.

Part No.: **AFPX-BATT**

Item	GT01 / GT01R				GT05M / GT05G		GT05S		GT11				
	5V/RS232C	5V/RS422	24V/RS232C	24V/RS422	RS232C	RS422	RS232C	RS422	RS232C	RS422			
Rated voltage	5 V DC				24 V DC								
Operating voltage range	4.5 to 5.5 V DC				21.6 to 26.4 V DC								
Power consumption	1W max. 1.1W max.		2W max.		2.4W max.		3.6W max.		2.4W max.				
Power supply unit isolation method	—				Transformer isolation								
Ambient temperature	0 to 50°C												
Ambient humidity	20 to 85% RH (No condensation at 25°C)												
Storage temperature	-20 to 60°C												
Storage humidity	10 to 85% RH (No condensation at 25°C)												
Vibration resistance	10 to 55 Hz (1-minute cycle): Double amplitude: 0.75 mm, 10 minutes in each of the X, Y, and Z directions												
Shock resistance	98 m/s <sup>2</sup> min: 4 times in each of the X, Y, and Z directions												
Superposed noise suppression	1,000 V [P-P] min, pulse width of 50 ns, 1 μs between power supply terminals (by a noise simulator) *AIGT0030B1/AIGT0030H1: When the ferrite device supplied with our PLC connection cable (AIGT8142) is mounted												
Environmental resistance	IP65 (in the initial stages) Dust-proof and drip-proof from the front of the panel only (Rubber packing is attached to the panel contact surface.) *When reattaching the panel, replace the waterproof packing.												
Mass	Approx. 160 g				Approx. 230 g								
Display	Display device	STN monochrome LCD				STN monochrome LCD		STN color LCD		STN monochrome LCD			
	Resolution	128 (W) x 64 (H) dots				320 (W) x 240 (H) dots				240 (W) x 96 (H) dots			
	Display color	2 colors (black/white)				2 colors (black/white)		4,096 colors		2 colors (black/white)			
	Displayable area	70.38 (W) x 35.18 (H) mm				73.0 (W) x 55.2 (H) mm				96.0 (W) x 38.4 (H) mm			
Functions	Backlight	GT01: 3-color LED (green, orange, red) GT01R: 3-color LED (white, red, pink) *No need for replacement				GT05M: 3-color LED (white, red, pink) GT05G: 3-color LED (green, orange, red) *No need for replacement		White LED *No need for replacement		3-color LED (green, orange, red) /White LED *No need for replacement			
	Font types	Fixed (GTWIN) : 8 x 8, 16 x 8, and 16 x 16 dots Characters can be displayed in the 1, 2, 4, or 8 times width or height. TrueType (GTWIN): 10 to 64 dots Windows (R): 10 to 64 dots				Fixed (GTWIN) : 8 x 8, 16 x 8, and 16 x 16 dots, Characters can be displayed in the 1, 2, 4, or 8 times width or height, TrueType (GTWIN): 10 to 240 dots, Windows (R): 10 to 240 dots				Fixed (GTWIN) : 8 x 8, 16 x 8, and 16 x 16 dots Characters can be displayed in the 1, 2, 4, or 8 times width or height. TrueType (GTWIN): 10 to 64 dots Windows (R): 10 to 64 dots			
	Languages	Japanese, English, Korean, German, French, Spanish, Italian, Simplified Chinese, Traditional Chinese, Turkish											
	Graphics	Straight lines, continuous straight lines, squares, circles, ovals, arcs, elliptic arcs, fan shapes, elliptic fan shapes, beveled squares, bitmaps											
COM. Port	Number of screens <sup>3</sup>	Approx. 160 screens				Approx. 240 screens		Approx. 180 screens		Approx. 250 screens			
	Screen No. that can be set	Base screens: No. 0 to 3FF, Keyboard screens: No. 0 to 7											
	Part functions	Messages, lamps, switches, data, bar graphs, clocks, keyboards, and line graphs				Messages, lamps, switches, data, bar graphs, clocks, keyboards, line graphs, and alarm list parts							
	Other functions	Recipe, flow display, write device, and language switching				Recipe, flow display, write device, alarm record, alarm list, and language switching							
	Clock function	Refers to and displays external clock data. (Not provided with a built-in clock function.)				Provided with a built-in clock function. (Can also refer to and display a PLC clock.) *Buy a commercially available battery.							
	Contrast adjustment	Contrast can be adjusted by using the touch panel.											
	Automatic communication settings	The communication conditions of dedicated software and PLC can be automatically set by connecting a cable.											
	Debugging function	GT connected between a PC and PLC allows the PLC to be debugged without a direct connection with the PC.											
Screen creation	Dedicated software should be used. Applicable OS: Windows® 95 (OSR2 or later)/98/Me/2000/NT/XP/Vista				Dedicated software should be used. Applicable OS: Windows® 2000/XP/Vista				Dedicated software should be used. Applicable OS: Windows® 95 (OSR2 or later)/98/Me/2000/NT/XP/Vista				
Touch key resolution	Free layout (8 dots min)												
Touch key operation force	0.5 N max				0.8 N max				0.5 N max				
Touch key life	1 million operations min												
COM. Port	Communication standard	Conforms to RS232C	Conforms to RS422	Conforms to RS232C	Conforms to RS422	Conforms to RS232C	Conforms to RS422	Conforms to RS232C	Conforms to RS422	Conforms to RS232C	Conforms to RS422		
	External communication conditions	Baud rate: 9,600/19,200/38,400/57,600/115,200 bps Data bits: 7 or 8 bits, Parity: None, Odd, Even, Stop bits: 1 bit											
	Protocol	Our FP series supported/General-purpose serial interface supported/Other companies' PLC supported (Refer to the compatible PLC list for manufacturers and models.)											
	Connector	Connector terminal base (8 pins)											
Screen data transfer interface	Communication standard	Tool port (Conforms to RS232C)				USB1.1				Tool port (Conforms to RS232C)			
	Communication conditions with personal computers	Baud rate: 9,600/19,200/115,200/230,400 bps*5 Data bits: 8 bits, Parity: None, Odd, Even, Stop bits: 1 bit				—				Baud rate: 9,600/19,200/115,200/230,400 bps*5 Data bits: 8 bits, Parity: None, Odd, Even, Stop bits: 1 bit			
	Protocol	Our dedicated protocol											
	Connector	5-pin mini-DIN				USB TYPE-B				5-pin mini-DIN			
Ethernet port <sup>8</sup>	—												
User's memory	F-ROM												
Memory capacity	384 kbyte				2,048 kbyte		12,288 kbyte		1,375 kbyte				
Memory	—				SRAM				—				
Memory backup	—				Lithium battery (replaceable) AFPX-BATT * Does not come with product.				Lithium battery (replaceable) CR2032, commercially available * Does not come with product.				

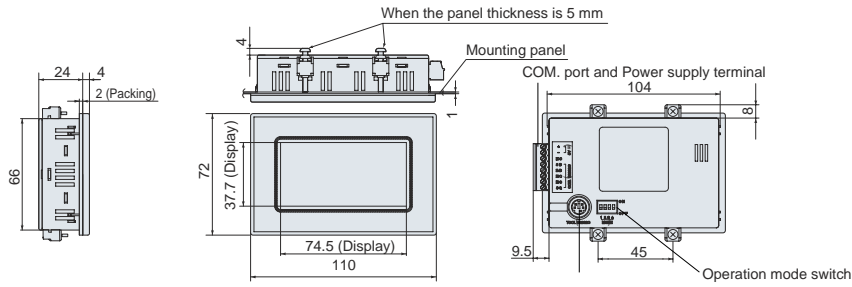
\*1. When the unit is being installed in a horizontal orientation or FP programmer II is being connected to the TOOL port, the usable range is 0 to +45°C.  
\*2. When the unit is being installed in a horizontal orientation, the usable range is 0 to +40°C.  
\*3. The number of screens that can be registered varies according to the registered contents.

\*4. WAV format (PCM, 8-KHz sampling rate, 16 bits, mono), Maximum sound data capacity: 512 KB (approx. 30 sec), Maximum registrable number of sound data items: 128  
\*5. A USB/RS232C conversion cable should be used to achieve a communication speed of 230,400 bps.  
When the TOOL port of GT is set to 230,400 bps, the auto communication setting function of GTWIN cannot be used. Set the communication speed to 230,400 bps on GTWIN before transferring data.  
\*6. The unit carries out serial communication data processing at 115.2kbits/s.  
\*7. Communications with external equipment (PLC) are not available.  
\*8. Simultaneous USB and Ethernet communications are not possible.

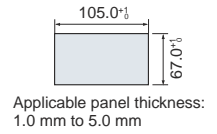
### Conformance to the UL/cUL standards

UL/cUL file No.	E96300
UL Standard No.	UL508

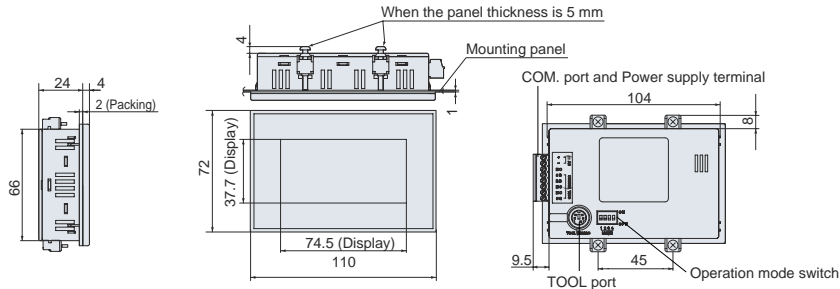
### GT01



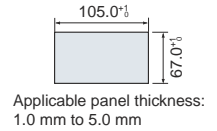
#### Panel cutout dimensions



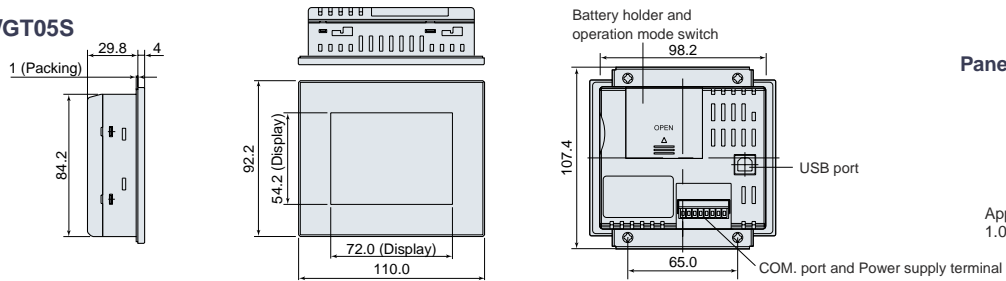
### GT01R



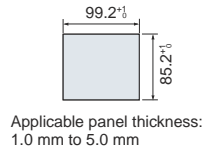
#### Panel cutout dimensions



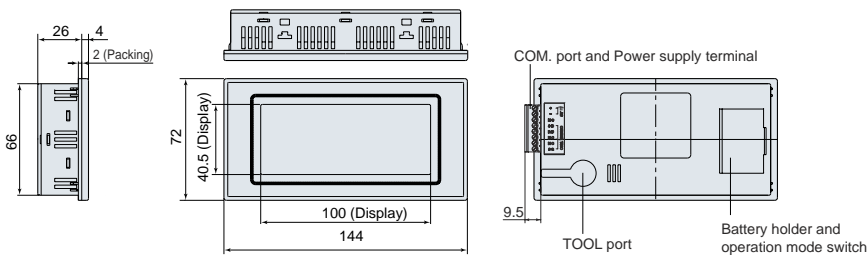
### GT05M/GT05G/GT05S



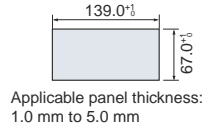
#### Panel cutout dimensions



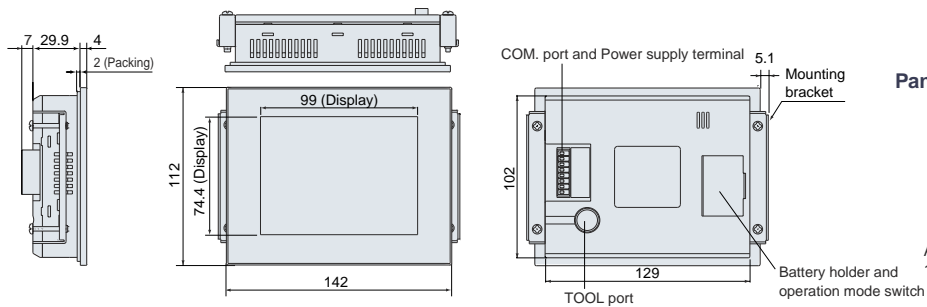
### GT11



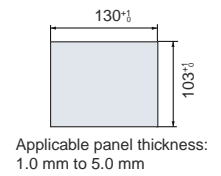
#### Panel cutout dimensions



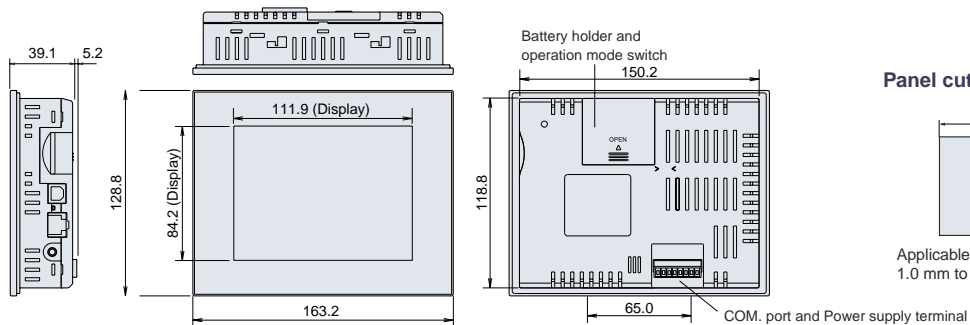
### GT21C



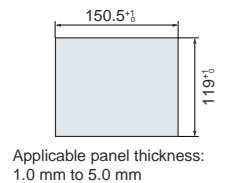
#### Panel cutout dimensions



### GT32M/GT32T



#### Panel cutout dimensions



\*The above drawing shows GT32T1. GT32T0 and GT32M do not have an Ethernet port and sound output jack. The display area of GT32M is 116.2 x 87.4 mm.