

導通面 Conductive face 補強板 Stiffener board

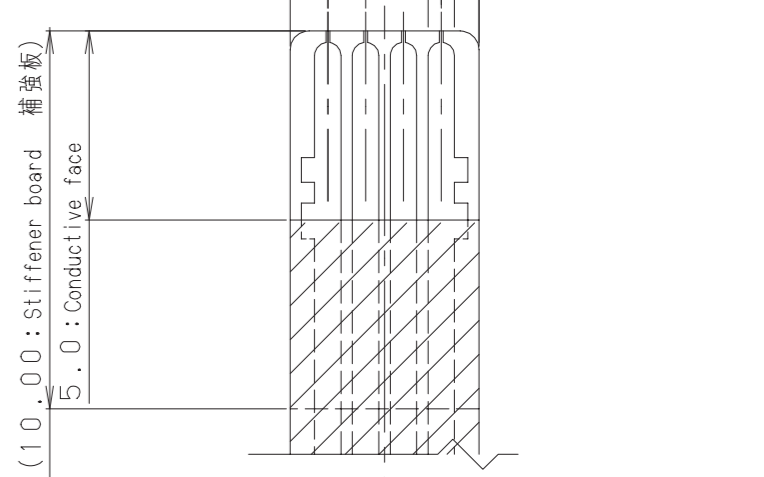
ガラス板厚: t1.1

Film outline

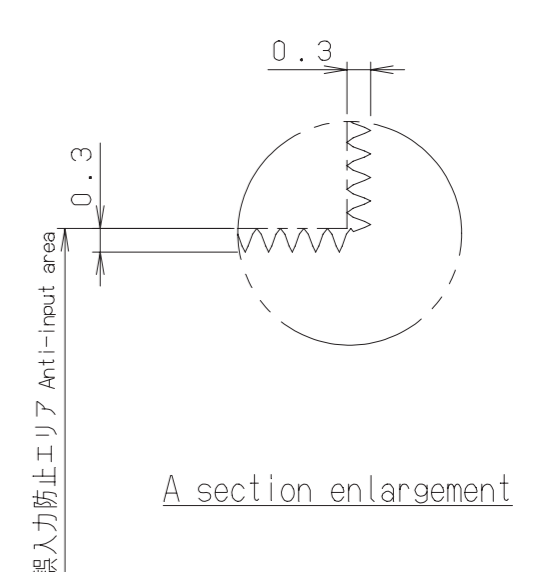
Left

Right

Bottom



Conductive Face (導通面)
FPC-Type Cable



A section enlargement

(6.91)	219.40: Guaranteed active area	6.00
(6.21: Anti-input area)	220.80	5.30: Anti-input area
(6.11)	221.00: Boundary line of top enclosure	5.20
(4.91)	223.40: Transparent area	4.00
	232.31	

(8.00)	138.50: Guaranteed active area
(7.30: Anti-input area)	139.90
(7.20)	140.10: Boundary line of top enclosure
(6.50)	141.50: Transparent area
	151.00
4.50	3.80: Anti-input area
3.70	
3.00	

Connector Pin Assignment

Pin #	Description
# 1	Bottom
# 2	Left
# 3	Top
# 4	Right

注記
NOTE

- 指定なき公差は±0.5とする。
Tolerance: ±0.5
- 本品は指入力専用タイプ。
Finger input type.
- FPCケーブル先端端子はAu処理とする。
Cable contact is Au plated.

Part number: FID-1154-401-A10