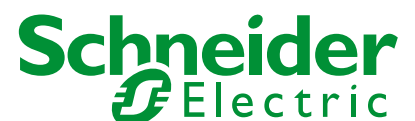


The Magelis® family of HMI products

The world's most popular family of human machine interfaces.



Make the most of your energySM





Bright, detailed and easy-to-read

Magelis HMIs are the world's most popular family of human machine interfaces. And they got that way by meeting the unique needs of a global customer base that relies on them to present a clear picture of their business, application and machine performance on a daily basis.

Easy to install, setup and operate, Magelis HMIs provide a simple and effective means of connecting systems, collecting data and presenting information in a meaningful format. With a complete line of HMIs available, it enables you to:

- Select the exact type of interface you require without sacrificing simplicity and performance
- Streamline programming by using the same software for all of your HMI equipment
- Connect data from across your organization, including equipment from other vendors
- Reduce implementation time and cost by utilizing commercially available cabling, modular architectures and standard networking protocols

From the smallest text display to the most sophisticated industrial PC, Schneider Electric's Magelis HMI interfaces give you a clear window into your operations. Not only letting you know when all systems are good, but more importantly, helping keep them that way.

Ready to go when and where you want!

The Magelis family of HMI products is able to meet your interface needs regardless of your industry, machine size or application complexity. From high-end panels, featuring the openness and ergonomics of a Microsoft® Windows® environment in a rugged PC that is ready for tough industrial environments, to the simplicity of a single-line text display unit that can

be mounted almost anywhere, Magelis HMIs are ready to go when and where you need them. And because your business applications aren't one size fits all, we've made mixing, matching and networking different Magelis HMIs simple and easy, by using a single software package, open communications and commercially available cabling when possible.



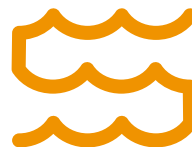
Baggage Handling



Automotive



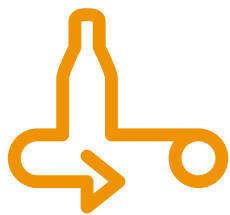
Packaging



Water Wastewater



Elevator



Material Handling



Food & Beverage



Building Automation



Oil & Gas



Hoisting

→ Small Panel

The Magelis XBT N, R, RT terminals bring greater convenience and ease-of-use in a substantially reduced size. These text displays or semi-graphic screens are ideal for performing diagnostics, adding control and adjusting system settings on simple or compact applications. They utilize the same powerful programming software as the more powerful Magelis HMI to reduce your implementation time, offer a compact size to fit into tight spaces and give you valuable usability features such as:

- High-visibility displays
- Multiple language support (ASCII, Cyrillic, Greek, Japanese and Chinese)
- 128 customizable characters
- Text import/export for translation
- Large choice of ergonomic user interfaces
- Optional touchscreen/keypad or keypad-only combinations

Magelis XBT N Terminals

with matrix screen ⁽¹⁾

| Type | Characteristics | | | | |
|---------------------------|--|------------------------|---|---------------------------|---|
| References | XBT N 200 | XBT N 400 | XBT N 410 | XBT N 401 | XBT NU 400 |
| Display | Capacity | 2 lines, 20 characters | | | |
| | Type | Back-lit LCD: green | | | Back-lit LCD (3 colors): green, orange, red |
| Data entry | Via keypad with 8 keys (4 customizable keys) | | | | |
| Function | Representation of variables | Alphanumeric | | | |
| | Alarm log | No | Yes | | |
| Communication | Serial link | 1 RJ45 (RS 232-RS 485) | | 1 Sub-D25 (RS 232-RS 485) | |
| Downloadable protocols | Uni-TE, Modbus® Master | | Modbus Master/Slave, UNI-TE (multipoint) Siemens PPI, OMRON Sysmacway, Mitsubishi FX, Rockwell DF1, DH485 | | Modbus Master |
| Development software | Vijeo® Designer Lite (on Windows 2000, XP and Vista) | | | | |
| Dimensions W x D x H (mm) | 132 x 37 x 74 | | | | |
| Compatibility with PLCs | Twido™, Modicon® TSX Micro, Modicon Premium™, Modicon M340™ and third-party devices using the downloadable protocols listed above. | | Twido, Modicon TSX Micro, Modicon Premium, Modicon Quantum, Modicon Momentum, Modicon M340 and third-party devices using the downloadable protocols listed above. | | TeSys® U Motor starter |
| Supply voltages | 5 VDC or PLC power supply | | 24 VDC | | |

(1) Except XBT N 200: alphanumeric screen.



Magelis XBT N 200



Magelis XBT N 401



Magelis XBT N 400

Magelis XBT R Terminals

with matrix screen

| Type | | Characteristics | | |
|---------------------------|-----------------------------|---|---|---|
| References | | XBT R 400 | XBT R 410 | XBT R 411 |
| Display | Capacity | 4 lines, 20 characters | | |
| | Type | Back-lit LCD: green | | Back-lit LCD (3 colors): green, orange, red |
| Data entry | | Via keypad with 20 keys (12 customizable keys) | | |
| Function | Representation of variables | Alphanumeric | | |
| | Alarm log | Yes | | |
| Communication | Serial link | 1 RJ45 (RS 232-RS 485) | 1 Sub-D25 (RS 232-RS 485) | |
| Downloadable protocols | | Uni-TE, Modbus Master | Uni-TE, Modbus Master/Slave ⁽¹⁾ , Siemens, Rockwell, Omron, Mitsubishi | |
| Development software | | Vijeo Designer Lite (on Windows 2000, XP and Vista) | | |
| Dimensions W x D x H (mm) | | 137 x 37 x 118 | | |
| Compatibility with PLCs | | Twido, Modicon TSX Micro, Modicon Premium, Modicon M340 | Twido, Modicon TSX Micro, Modicon Premium, Modicon Quantum, Modicon Momentum, Modicon M340 and third-party devices using the downloadable protocols listed above. | |
| Supply voltages | | 5 VDC or PLC power supply | 24 VDC | |

(1) For XBTR411 only.

Magelis XBT RT Terminals

with semi-graphic and touchscreen

| Type | | Characteristics | |
|---------------------------|-----------------------------|---|---|
| References | | XBT RT 500 | XBT RT 511 |
| Display | Capacity | 10 lines, 33 characters | |
| | Type | Back-lit LCD: green | Back-lit LCD (3 colors): green, orange, red |
| Data entry | | Via keypad with 12 keys (10 customizable keys) | Via keypad with 12 customizable keys |
| Functions | Representation of variables | Alphanumeric, bar graph, curves, button and light | |
| | Alarm log | Yes | |
| Communication | Serial link | 1 RJ45 (RS 232-RS 485) | 1 RJ45 (RS 232-RS 485) |
| Downloadable protocols | | Modbus Master, Uni-TE | Modbus Master, UNI-TE (multipoint) (point-to-point), Siemens PPI, OMRON Sysmacway, Mitsubishi FX, Rockwell DF1, DH485 |
| Development software | | Vijeo Designer Lite (on Windows 2000, XP and Vista) | |
| Dimensions W x D x H (mm) | | 137 x 37 x 118 | |
| Compatibility with PLCs | | Twido, Modicon TSX Micro, Modicon Premium, Modicon M340, Modicon Quantum and third-party devices using the downloadable protocols listed above. | |
| Supply voltages | | 5 VDC or PLC power supply | 24 VDC |



Magelis XBT R 400

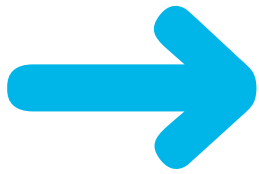


Magelis XBT RT 500



Magelis XBT RT 511





Advanced Panel

As a part of the Transparent Ready® family, the Magelis XBT GT/GK/GTW graphic terminals take on multiple roles and expand the possibilities of the entire Magelis range of HMIs. Designed to fill your specific HMI application needs, Magelis XBT GT graphic terminals are available in seven screen sizes, including 3.8 in., 5.7 in., 7.5 in., 10.4 in., 12.1 in. and 15 in. They also offer:

- Openness – With embedded Ethernet, numerous communication ports and multilink capability on all communication ports, they offer proven, easy-to-use connection possibilities
- Flexibility – With a variety of panel sizes, exceptional image quality and your choice of touch screen and/or keypad interfaces available, choosing the right Magelis HMIs for your applications simple

Magelis XBT GT

with 3.8 in. touchscreen

| Type | Characteristics | | | | |
|---------------------------|---|--|---|---|-------------|
| References | XBT GT 1100 | XBT GT 1105 | XBT GT 1130 | XBT GT 1135 | XBT GT 1335 |
| Display | LCD screen size | 3.8 in. | | | |
| | Type | STN monochrome, amber or red | | | TFT color |
| Functions | Representation of variables | Alphanumeric, bitmap, bar graph, gauge, button, light, clock, flashing light, keypad | | | |
| | Curves/alarm logs | Yes, with log; yes, incorporated | | | |
| Communication | Serial link | 1 RJ45 (RS 232-RS 485) | | | |
| | Networks | — | Ethernet, IEEE 802.3 10 BASE-T, RJ45 | Ethernet, IEEE 802.3 10/100 BASE-T, RJ45 | |
| Downloadable protocols | Mitsubishi (Melsec), Omron (Sysmac), Rockwell Automation (Allen Bradley), Siemens (Sematic) Uni-TE, Modbus, Modbus TCP | | | | |
| Development software | Vijeo Designer VJD•••TG•V••M (on Windows 2000, XP and Vista) | | | | |
| Dimensions W x D x H (mm) | 130 x 41 x 104 | | | | |
| Compatibility with PLCs | Twido, Modicon TSX Micro, Modicon Premium, Modicon Quantum, Modicon M340 and third-party devices using the downloadable protocols listed above. | | | | |
| Compact flash card slot | No | | | | |
| USB port | — | 1 | — | 1 | 1 |
| Built-in Ethernet TCP/IP | No | | Yes | | |
| Supply voltage | 24 VDC | | | | |



Magelis XBT GT 1130



Magelis XBT GT 1105



Magelis XBT GT 1100



Magelis XBT GT 1135



Magelis XBT GT 1335

Magelis XBT GT

with 5.7 in. touchscreen

| Type | | Characteristics | | | | |
|---------------------------|-----------------------------|---|-------------|---|---------------------------|---|
| References | | XBT GT 2110 | XBT GT 2120 | XBT GT 2130 | XBT GT 2220 | XBT GT 2330 |
| Display | LCD screen size | 5.7 in. | | | | |
| | Type | Back-lit STN, monochrome blue | | | STN, color 4096 colors | TFT, color 65,536 colors |
| Functions | Representation of variables | Alphanumeric, bitmap, bar graph, gauge, button, light, clock, flashing light, keypad | | | | |
| | Curves/alarm logs | Yes, with log; yes, incorporated | | | | |
| Communication | Serial link | 1 Sub-D9 (RS 232/RS 422-RS 485) + 1 RJ45 (RS 485) | | | | |
| | Networks | — | | Ethernet, IEEE 802.3 10/100 BASE-T, RJ45 | — | Ethernet, IEEE 802.3 10/100 BASE-T, RJ45 |
| Downloadable protocols | | Mitsubishi (Melsec), Omron (Sysmac), Rockwell Automation (Allen Bradley), Siemens (Simatic), Uni-TE, Modbus, Modbus TCP/IP | | | | |
| Development software | | Vijeo Designer VJD●●●TG●V●●M (on Windows 2000, XP and Vista) | | | | |
| Dimensions W x D x H (mm) | | 167.5 x 60 x 135 | | | | |
| Compatibility with PLCs | | Twido, Modicon TSX Micro, Modicon Premium, Modicon Quantum, Modicon M340, Modicon Momentum and 3 rd party devices using the downloadable protocols listed above. | | | | |
| Compact flash card slot | | No | Yes | | | |
| USB port | | 1 | | | | |
| Video in | | No | | | | |
| Built-in Ethernet TCP/IP | | No | No | Yes | No | Yes |
| Supply voltage | | 24 VDC | | | | |



Magelis XBT GT 2120



Magelis XBT GT 2220



Magelis XBT GT 2110

Magelis XBT GT

with 7.5 in., 10.4 in., 12.1 in. and 15 in. touchscreen

| Type | Characteristics | | | | | | | | | | |
|---------------------------|---|--|-------------|----------------|-------------|----------------|-------------|----------------|-------------|----------------|--|
| References | XBT GT 4230 | XBT GT 4330 | XBT GT 4340 | XBT GT 5230 | XBT GT 5330 | XBT GT 5340 | XBT GT 6330 | XBT GT 6340 | XBT GT 7340 | | |
| Display | LCD screen size | 7.5 in. | | | 10.4 in. | | | 12.1 in. | | 15 in. | |
| | Type (color) | STN | TFT | STN | TFT | TFT | TFT | TFT | TFT | | |
| | Number of colors | 4096 | 65,536 | 4096 | 65,536 | 65,536 | 65,536 | 65,536 | 65,536 | | |
| Functions | Representation of variables | Alphanumeric, bitmap, bar graph, gauge, button, light, clock, flashing light, keypad | | | | | | | | | |
| | Curves/alarm logs | Yes, with log; yes, incorporated | | | | | | | | | |
| Communication | Serial link | 1 Sub-D9 (RS 232/RS 422-RS 485) + 1 RJ45 (RS 485) | | | | | | | | | |
| | Networks | Ethernet, IEEE 802.3 10/100 BASE-T, RJ 45 | | | | | | | | | |
| Downloadable protocols | Mitsubishi (Melsec), Omron (Sysmac), Rockwell Automation (Allen Bradley), Siemens (Simatic), Uni-TE, Modbus, Modbus TCP/IP | | | | | | | | | | |
| Development software | Vjeo Designer VJD•••TG•V•M (on Windows 2000, XP and Vista) | | | | | | | | | | |
| Dimensions W x D x H (mm) | 215 x 60 x 170 | | | 313 x 56 x 239 | | 271 x 57 x 213 | | 313 x 56 x 239 | | 395 x 60 x 294 | |
| Compatibility with PLCs | Twido, Modicon TSX Micro, Modicon Premium, Modicon Quantum, Modicon M340 and third-party devices using the downloadable protocols listed above. | | | | | | | | | | |
| Compact flash card slot | Yes | | | | | | | | | | |
| USB port | 1 | | | 2 | | | 2 | | 2 | | |
| Video in | No | | Yes | No | | | Yes | No | | Yes | |
| Built-in Ethernet TCP/IP | Yes | | | | | | | | | | |
| Supply voltage | 24 VDC | | | | | | | | | | |



Magelis XBT GT 5230



Magelis XBT GT 4230



Magelis XBT GT 6330



Magelis XBT GT 7340

Magelis XBT GK

with 5.7 in. and 10.4 in. touchscreen/keypad

| Type | Characteristics | | |
|---------------------------|---|--|---|
| References | XBT GK 2120 | XBT GK 2330 | XBT GK 5330 |
| Display | Screen size | 5.7 in. | |
| | Type | STN monochrome black and white | TFT color 65,536 colors |
| Data entry | Soft function keys with LED | 14 | 18 |
| | Static function keys with LED | 10 + legends | 12 + legends |
| | Service keys/alphanumeric keys | 8/12 | |
| | Touchscreen and industrial pointer | Yes | |
| Functions | Representation of variables | Alphanumeric, bitmap, bar graph, gauge, button, light, clock, flashing light, keypad | |
| | Curves | Yes, with log | |
| | Alarm logs | Yes | |
| Communication | Serial link | 1 Sub-D9 (RS 232/RS 422-RS 485) + 1 RJ45 (RS 485) | |
| | Networks | — | Ethernet, IEEE 802.3 10/100 BASE-T, RJ 45 |
| Downloadable protocols | Mitsubishi (Melsec), Omron (Sysmac), Rockwell Automation (Allen Bradley), Siemens (Simatic), Uni-TE, Modbus, Modbus TCP/IP | | |
| Development software | Vijeo Designer VJD•••TG•V••M (on Windows 200, XP and Vista) | | |
| Compact flash card slot | Yes | | |
| Dimensions W x D x H (mm) | 220.3 x 88 x 265 | 296 x 91 x 332 | 197 x 92.6 x 147 |
| Compatibility with PLCs | Twido, Modicon TSX Micro, Modicon Premium, Modicon Quantum, Modicon M340 and third-party devices using the downloadable protocols listed above. | | |
| USB port | 1 | | 2 |
| Video in | No | | |
| Built-in Ethernet TCP/IP | No | Yes | |
| Supply voltage | 24 VDC | | |



Magelis XBT GTW 450



Magelis XBT GK 330



Magelis XBT GK 2330



Magelis XBT GK 2120



Magelis XBT GTW 750

If you are familiar with the Magelis XBT GTW, it's because it uses a Windows environment and allows you to freely navigate on the web. Combined with the Vijeo Designer configuration software, you multiply its potential and benefit from true multimedia functions including:

- Integrated media player with IP streaming video and webcam
- The ability to view web pages locally or remotely for easy diagnostics and maintenance
- Additional dimensions for connectivity including:
 - Multiple communication interfaces
 - Dual Ethernet
 - Compact flash card slot
 - Four USB ports
 - PCMCIA slots (on the 15 in.)
- Access to PC peripherals such as:
 - USB storage units (memory stick, external hard drive, DVD player/burner)
 - USB user interface (keyboard, mouse, etc.)
 - PCMCIA communication card for wireless networks

Magelis XBT GTW

with 8.4 in. and 15 in. touchscreen

| Type | Characteristics | |
|---------------------------|---|--|
| References | XBT GTW 450 | XBT GTW 750 |
| Display | LCD screen size | 8.4 in. |
| | Type (color) | TFT |
| | Resolution | SVGA 800 x 600 |
| | Number of colors | 262, 144 |
| Functions | Representation of variables | Alphanumeric, bitmap, bar graph, gauge, button, light, clock, flashing light, keypad |
| | Curves/Alarm historic | Yes, with log; yes, incorporated |
| Communication | Serial link | 2 Sub-D9 (RS 232) |
| | Networks | Dual Ethernet, IEEE 802.3 10/100/1000 BASE-T, RJ 45 |
| Downloadable protocols | Mitsubishi (Melsec), Omron (Sysmac), Rockwell Automation (Allen Bradley), Siemens (Simatic), Uni-TE, Modbus, Modbus TCP/IP | |
| Development software | Vijeo Designer VJD●●●TG●V●●M (on Windows Vista, XP and 2000) | |
| Dimensions W x D x H (mm) | 230 x 177 x 65 | 395 x 294 x 65 |
| Compatibility with PLCs | Twido, Modicon TSX Micro, Modicon Premium, Modicon Quantum, Modicon M340 and third-party devices using the downloadable protocols listed above. | |
| Compact flash card slot | 2 | 1 |
| USB port | 4 | 4 + 1 on front panel |
| PCMCIA slot | 0 | 2 |
| Video in | No | |
| Built-in Ethernet TCP/IP | 2 | |
| Supply voltage | 24 VDC | |

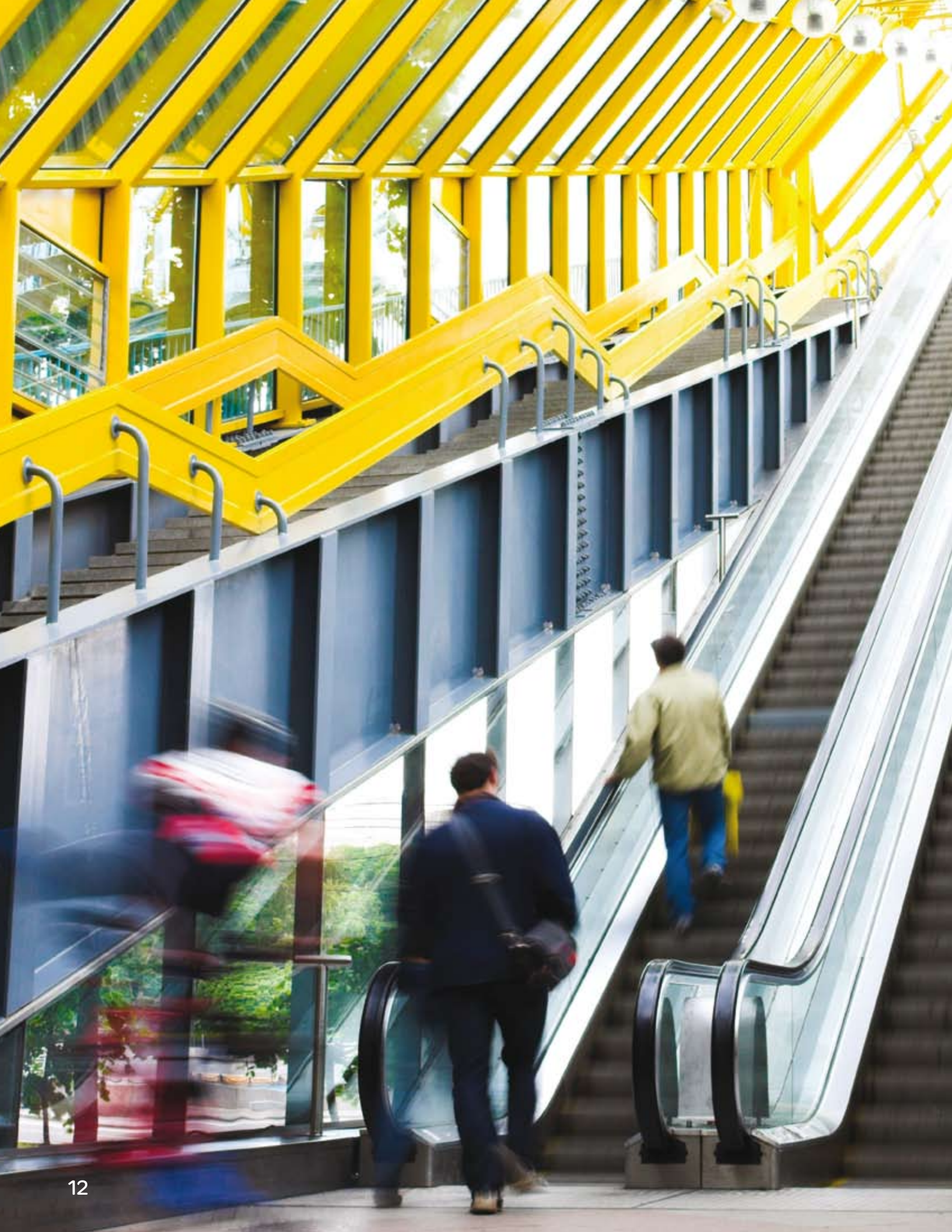
Certifications Magelis XBT range: Depending on model*



C-Tick



* For more information, consult your HMI catalog.



→ Accessories

| Connection cables | PC to Magelis transfer cables | |
|-------------------|-------------------------------|--------------------|
| References | XBTZ925 ⁽¹⁾ | XBTZG935 |
| Length (m) | 2.5 | 2 |
| Application | PC to XBTN/R/RT | PC to XBTGT/GK/GTW |
| Type of connector | RJ45/RJ45 | USB/USB |
| Physical link | RS 485 | – |

(1) Adaptor TSXCUSB485 for linking USB port of PC; to be used with connecting cables

| Cards and gateways for fieldbus | Modbus Plus | FIPWAY | Profibus DP | DeviceNet |
|---------------------------------|-------------|------------|-------------|-----------|
| References | XBTZGUMP | TSXCUSBFIP | XBTZGPDP | XBTZGDVN |

| Connection cables | PLC connection cables | | | | | |
|-------------------|--|---|---------------------------------------|---|------------------|---------------|
| References | XBTZ9980 | XBTZ9780 | 990NAA26320 | XBTZ968 | XBTZ9710 | XBTZ938 |
| Length (m) | 2.5 | | | | | |
| Application | XBTGT, GK, N200, N400, R400 RT to: Modicon M340 | Twido, Modicon TSX Micro, Modicon Premium | XBTGT, GK, GTW to: Modicon Quantum | XBT N410, N401, R410, R411 to: Twido, Modicon TSX Micro, Modicon Premium | Modicon Quantum | Modicon M340 |
| Type of connector | RJ45/RJ45 | RJ45/MiniDin | SUB D 9/SUB D 9 | MiniDin/SUB D 25 | SUB D 9/SUB D 25 | RJ45/SUB D 25 |
| Physical link | RS 485 | RS 485 | RS 232 | RS 485 | RS 232 | RS 485 |

| Compact flash card | | | | |
|--------------------|-----------|-----------|---------------|---------------|
| References | XBTZGM128 | XBTZGM256 | MPCYN00CFE00N | MPCYN00CF100N |
| Memory | 128 MB | 256 MB | 512 MB | 1 GB |

| Connection cables | Front Panel USB |
|-------------------|--------------------------------------|
| Reference | XBTZGUSB |
| Application | XBTGT (except XBTGT1100/1130)/GT/GTW |
| Type of connector | USB/USB |



PC to Magelis transfer cables

→ Embedded Panel

The Magelis Smart iPC is the ideal operator terminal for Windows client applications. It is open to the web and functions as an extension of dedicated terminals and the industrial PC. It meets the demands of pre-defined operator dialog, display and remote diagnostics utilizing:

- Standard Windows XPe technologies
- Touch-sensitive screen and viewing angle of up to 160°
- Compact, rugged construction that is hardened and UL 508, CSA certified
- Fast Ethernet 10/100Mbps port, compact flash cards, two PCMCIA expansion slots that make it easier to utilize and upgrade

Magelis Smart

with 8.4 in., 12 in. and 15 in. touchscreen

| Type | Characteristics | | | | |
|-------------------------|------------------------------|---------------------------------|---------------------------------|---------------|---------------|
| Front panel | Smart 8.4 in. | Smart 12 in. | Smart 15 in. | | |
| Touchscreen | 8.4 in. LCD TFT | 12 in. LCD TFT | 15 in. LCD TFT | | |
| Resolution | SVGA 800 x 600 | SVGA 800 x 600 | XGA 1024 x 768 | | |
| Front side port | — | 1 x USB | 1 x USB | | |
| Processor | Celeron M@600MHz | Celeron M@600 MHz | Celeron M@600 MHz | | |
| RAM | 256 MB ▶ 1024 MB | 256 MB ▶ 1024 MB | 256 MB ▶ 1024 MB | | |
| SRAM (Vijeo Designer) | 512 KB | — | 512 KB | | |
| Storage | CF 1 GB | CF 1 GB | CF 1 GB | | |
| Extension | — | 1 x PCMCIA type I (or type III) | 2 x PCMCIA type I (or type III) | | |
| Ethernet ports | 2 (10/100/1000 + 10/100) | 2 (10/100/1000 + 10/100) | 2 (10/100/1000 + 10/100) | | |
| I/O ports | 4 x USB, 2 x RS 232 | 4 x USB, 2 x RS 232 | 4 x USB, 2 x RS 232 | | |
| Dimensions W x D H (mm) | 230 x 177 x 65 | 313 x 239 x 60 | 395 x 294 x 65 | | |
| Optimized | Client Edition | AC | MPCST11NAJ00T | MPCST21NAJ10T | MPCST52NAJ20T |
| Compact flash disk | | DC | MPCST11NDJ00T | — | MPCST52NDJ20T |
| | HMI Edition (Vijeo Designer) | AC | MPCST11NAJ00H | MPCST21NAJ10R | MPCST52NAJ20H |



Magelis Smart 15 in. touchscreen



Magelis Smart 12 in. touchscreen



Magelis Smart 8.4 in. touchscreen

→ PC Panel

The Magelis Compact iPC incorporates the latest PC technologies giving it inherent qualities that make it an attractive, open-ended solution that is especially suitable for machine manufacturers. It features an affordable design that incorporates:

- Appropriate power: Celeron M 1.0 GHz to 1.3 GHz, Intel Pentium M 1.6 GHz
- Choice of access: embedded Ethernet TCP/IP, dual Ethernet network and/or wireless network, PCI or PCMCIA expansion cards
- Compact size for easy installation
- Intel Pentium microprocessor and Microsoft Windows
- UL 508, CSA certification

Magelis Compact iPC

with 8.4 in., 12 in. and 15 in. touchscreen

| Type | | Characteristics | | |
|--|------------------------------|------------------------------|---------------------------------|---------------------------------|
| | | Compact iPC 8.4 in. | Compact iPC 12 in. | Compact iPC 15 in. |
| Front Panel | | Compact iPC 8.4 in. | Compact iPC 12 in. | Compact iPC 15 in. |
| Touchscreen | | 8.4 in. LCD TFT | 12 in. LCD TFT | 15 in. LCD TFT |
| Resolution | | SVGA 800 x 600 | XGA 1024 x 768 | XGA 1024 x 768 |
| Front side port | | NA | 1 x USB | 1 x USB |
| Processor | | Celeron M@1 GHz | Celeron M@1.3 GHz | Pentium M@1.6 GHz |
| RAM | | 512 MB ▶ 1024 MB | 512 MB ▶ 1024 MB | 512 MB ▶ 2 GB |
| SRAM (Vijeo Designer) | | 512 KB | — | 512 KB |
| Drive devices | | — | — | DVD + 3.5 in. Floppy |
| Storage | | HDD ≥ 40GB | HDD ≥ 40GB | HDD ≥ 40GB |
| Extension | | — | 1 x PCMCIA type I (or type III) | 2 x PCMCIA type I (or type III) |
| Ethernet ports | | 2 (10/100/1000 + 10/100) | 2 (10/100/1000 + 10/100) | 2 (10/100/1000 + 10/100) |
| I/O ports | | 4 x USB, 2 x RS 232 | 4 x USB, 2 x RS 232 | 4 x USB, 2 x RS 232 |
| Video ports | | — | — | 1 x RGB |
| Dimensions W x D x H (mm) | | 230 x 177 x 120 | 313 x 239 x 100 | 395 x 294 x 100 |
| General purpose (HDD) | Client Edition | AC MPCKT12NAX00N | MPCKT22NAX00N | MPCKT55NAX20N |
| | | DC — | — | MPCKT55NDX20N |
| Heavy duty (flash disk) ⁽¹⁾ | HMI Edition (Vijeo Designer) | AC MPCKT12NAX00H | MPCKT22NAX00R | MPCKT55NAX20H |
| | Client Edition | AC MPCKT12SAX00N | MPCKT22SAX00N | MPCKT55MAX20N |
| | HMI Edition (Vijeo Designer) | AC MPCKT12SAX00H | MPCKT22SAX00H | MPCKT55MAX20H |
| | SCADA Edition (Vijeo Citect) | AC | | |
| | Vijeo Citect Full 500 I/O | MPCKT12MAX00V ⁽¹⁾ | — | MPCKT55MAX20L ⁽¹⁾ |
| | Vijeo Citect Lite 1200 I/O | — | — | MPCKT55MAX20V ⁽¹⁾ |

(1) Products available soon



Magelis Compact iPC 8.4 in.



Magelis Compact iPC 12 in.



Magelis Compact iPC 15 in.

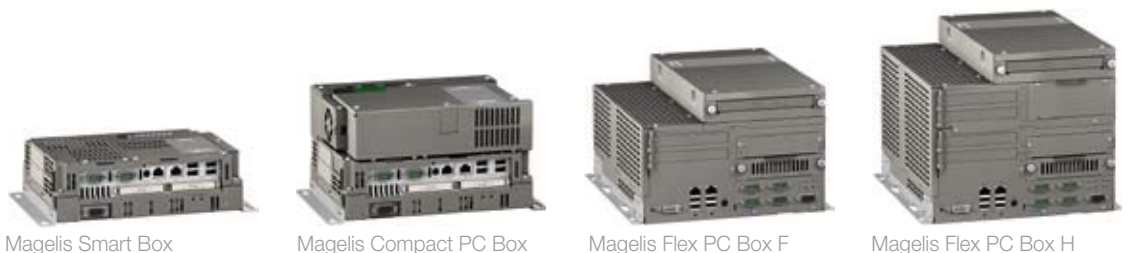


Embedded Box and PC Box

Magelis Smart, Compact PC and Flex PC Boxes

| Type | | Characteristics | | | | |
|---|------------------------------|--|--|---|---|---------------|
| Reference | | Smart Box | Compact PC Box | Flex PC Box F | Flex PC Box H | |
| Processor | | Celeron M@600 MHz | Celeron M@1 GHz | Celeron M@1.86 GHz or Core Duo@2 GHz | Celeron M@1.86 GHz or Core Duo@2 GHz | |
| RAM Default ▶ Max | | 256 MB ▶ 1024 MB | 512 MB ▶ 1024 MB | 512/1024 MB ▶ 4096 MB | | |
| Storage | | CF 1 GB | 1 drive HDD 60 GB or Flash disk 8 GB or 16 GB | 1 or 2 drives HDD 80 GB with RAID option or Flash disk 8 GB or 16 GB | | |
| Drives | | — | — | CD-DVD reader CD-DVD writer option | | |
| Extension | | — | 1 x PCI | 2 x PCI | 4 x PCI | |
| Video ports | | 1 x RGB | 1 x RGB | 1 x DVI-I (support RGB) | | |
| Ethernet ports | | 2 (10/100/1000 + 10/100) | 2 (10/100/1000 + 10/100) | 2 (10/100/1000 + 10/100) | | |
| I/O ports | | 4 x USB, 2 x RS 232 | 4 x USB, 2 x RS 232 | 4 x USB, 4 x RS 232 | | |
| Power supply | | 24 VDC and 100...240 VAC (External adaptor) | 100...240 VAC | 24 VDC and 100...240 VAC | | |
| Certification | | UL 508, CSA | UL 508, CSA | UL 508, CSA, HAZ-LOC | | |
| Connection for /Display | | Yes | | | | |
| Connection for front panel | | No | | | Yes | |
| Dimensions W x D x H (mm) | | 218 x 165 x 65 | 218 x 165 x 115 | 243 x 160 x 289 | 243 x 205 x 289 | |
| General purpose (HDD) | Base Windows XP | AC | — | MPCKN02NAX00N | MPCFN02NAX00N | MPCHN02NAX00N |
| | | AC | — | — | MPCFN05NAX00N | MPCHN05NAX00N |
| | | DC | — | — | MPCFN02NDX00N | — |
| | | DC | — | — | MPCFN05NDX00N | MPCHN05NDX00N |
| HMI Edition (Vijeo Designer) | AC | — | MPCKN02NAX00H | — | — | |
| | DC | — | — | — | — | |
| Heavy Duty (flash disk) ⁽¹⁾ | Base Windows XP | AC | — | MPCKN02SAX00N | MPCFN05MAX00N | MPCHN05MAX00N |
| | HMI Edition (Vijeo Designer) | AC | — | MPCKN02SAX00H | MPCFN05SAX00H | MPCHN05SAX00H |
| Optimized (Compact flash) | Client Edition (base XPe) | AC | MPCSN01NAJ00T | — | — | — |
| | | DC | MPCSN01NDJ00T | — | — | — |
| | HMI Edition (Vijeo Designer) | AC | MPCSN01NAJ00H | — | — | — |
| | | DC | MPCSN01NDJ00H | — | — | — |

(1) Products available soon



Magelis Smart Box

Magelis Compact PC Box

Magelis Flex PC Box F

Magelis Flex PC Box H



Industrial Display and Front Panel

These industrial flat screen monitors are designed for use with PCs. Featuring LCD TFT technology, they offer excellent viewing comfort and extended-service life.

Magelis *i*Display

with 15 in. and 19 in. touchscreen

| Type | Characteristics | | | |
|---------------------------|-------------------------|------------------------------|------------------------|---------------|
| Front Panel | 15 in. touch and keypad | 15 in. touch | 19 in. touch | |
| References | AC | MPCNB50NAN00N ⁽¹⁾ | MPCYT50NAN00N | MPCYT90NAN00N |
| Touchscreen | 15 in. LCD TFT | 15 in. LCD TFT | 19 in. LCD TFT | |
| Resolution | XGA 1024 x 768 | XGA 1024 x 768 | SXGA 1280 x 1024 | |
| Front side port | 1 x USB | 1 x USB | 1 x USB | |
| Video ports | 1 x VGA and 1 x DVI | 1 x VGA and 1 x DVI | 1 x VGA and 1 x DVI | |
| Touchscreen ports | 1 x USB and 1 x RS 232 | 1 x USB and 1 x RS 232 | 1 x USB and 1 x RS 232 | |
| Power supply | 100...240 VAC | 100...240 VAC | 100...240 VAC | |
| Certification | UL 508, CSA | UL 508, CSA | UL 508, CSA | |
| Dimensions W x D x H (mm) | 483 x 365 x 65 | 395 x 294 x 60 | 460 x 390 x 65 | |

(1) Available 4th quarter 2008

The Magelis Modular *i*PC is a flexible solution that benefits from a unique modular mechanical and functional design. The front panels and central processing units can be mixed to meet your requirements. This modularity is an added benefit when it comes to service and maintenance.

Magelis *i*PC

Compatible with Magelis Flex PC Box

| Type | Characteristics | | | |
|---------------------------|-------------------------|-------------------------|----------------|------------------|
| Front Panel | 12 in. touch and keypad | 15 in. touch and keypad | 15 in. touch | 19 in. touch |
| References | MPCYB20NNN00N | MPCYB50NNN00N | MPCYT50NNN00N | MPCYT90NNN00N |
| Touchscreen | 12 in. LCD TFT | 15 in. LCD TFT | 15 in. LCD TFT | 19 in. LCD TFT |
| Resolution | SVGA 800 x 600 | XGA 1024 x 768 | XGA 1024 x 768 | SXGA 1280 x 1024 |
| Front side port | 1 x USB | 1 x USB | 1 x USB | 1 x USB |
| Dimensions W x D x H (mm) | 420 x 320 x 31 | 483 x 365 x 31 | 420 x 320 x 31 | 460 x 390 x 44 |



Magelis 19 in. touch



Magelis 15 in. touch



Magelis 15 in. touch & keypad



Magelis 12 in. touch & keypad

→ Configuration Software

Vijeo Designer

Magelis XBT GT, GK, GTW, Magelis Smart, Compact iPC and PC Box*

Vijeo Designer configuration software enables creation of automated system control operator dialog applications for XBT GT, GK, GTW terminals, Smart and Compact iPC, and Smart, Compact and Flex PC Boxes. It also enables management of the multimedia functions of XBT GTs, Smart and Compact iPC, Smart, Compact and Flex PC Boxes and offers users of Ethernet terminals and iPC remote access via a web browser (Web Gate function).



Configuration

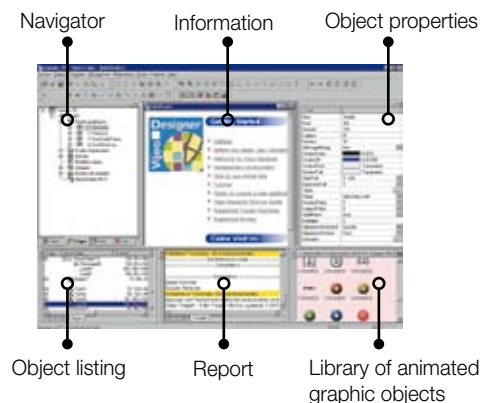
Vijeo Designer configuration software enables fast, simple processing of operator dialogue projects thanks to its ergonomics, developed around six configurable windows. It also offers comprehensive application management tools including:

- Project creation; projects comprising one or several applications
- Recipe editor (32 groups of 64 recipes of maximum 1024 ingredients)
- User action list (eg. script) for application adaptability
- Application variable cross-referencing
- Vectorial graphic library for more attractive graphic screens
- Application block diagram documentation
- Simulation mode for simple design office application testing
- High-performance graphic editor for simple block diagram creation (over 30 animated pre-configured objects)
- Support of layers and masks for faster development
- Data sharing (up to 300 variables on eight terminals)
- Management of 40 languages (including simplified Chinese, Korean, Arabic and Hebrew)
- Multilingual software: English, French, German, Italian, Spanish and Chinese
- Programmable controller database sharing (Unity, PL7, Concept, TwidoSoft, ProWORX and ModSoft)
- Advanced traceability function (periodic, at event or on request)
- Project backup on terminal for simple maintenance
- User-friendly data recovery tool
- Support of standard USB peripherals (USB key up to 2 GB)
- Support of external USB keyboards and mice
- Integration with Schneider Electric equipment (buffer diagram, variables access)
- Over 35 third-party protocols

Selection guide

| Number of licenses | Composition | References |
|----------------------|---------------------------------|--------------------------------|
| Single (1) | Without cable With USB cable | VJDSNDTGSV••M VJDSUDTGSV••M |
| Group (3) | Without cable | VJDGNDTGSV••M |
| Team (10) | Without cable | VJDTNDTGSV••M |
| Facility (unlimited) | Without cable | VJDFNDTGSV••M |

Software is delivered on CD-ROM and can be executed under Windows 200, XP and Vista.
•• represents version number.



* Available with Vijeo Designer ≥ 5.0

Vijeo Designer Lite

Magelis XBT N, R, RT

Vijeo Designer Lite configuration software enables the creation of simple operator dialog applications on Magelis XBT N, R and RT Small Panel ranges. It also enables transparent recovery of all applications for Magelis XBT N and R produced using its predecessor: XBT L1000. For simplified installation and improved consistency, Vijeo Designer Lite retains the main characteristics of Vijeo Designer software (ergonomics, interface), which has become the reference in the HMI field.



Configuration

Vijeo Designer Lite software enables fast and easy creation of different types of pages (application page, alarm pages, help pages) and the installation of navigation between pages. It offers:

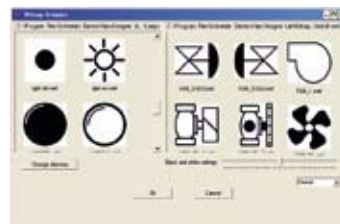
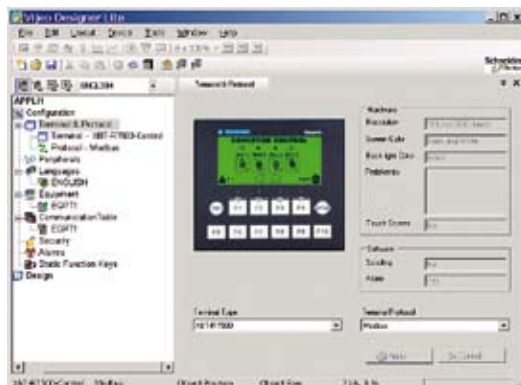
- Graphic objects developed for Magelis XBT RT (bar charts, trend curves)
- Character fonts Byzantine, simplified Chinese, Cyrillic, Japanese
- Project reports
- Application simulation on PC
- Six languages: English, French, German, Italian, Spanish and Chinese

Selection guide

| Number of licenses | Composition | References |
|--------------------------------|---------------------------------|--------------------------------|
| Single (1) | Without cable With USB cable | VJDSNDTMSV●●M VJDSUDTMSV●●M |
| Group (3) | Without cable | VJDGNDTMSV●●M |
| Team (10) | Without cable | VJDTNDTMSV●●M |
| Facility (Unlimited) | Without cable | VJDFNDTMSV●●M |
| Transfer cable for USB port | Adapter Link USB/Serial Link | XBZ925 TSXCUSB485 |

Software is delivered on CD-ROM and can be executed under Windows 2000, XP and Vista.

●● represents version number.





Talk to someone you can trust

It's crystal clear to anyone who uses one of our human machine interfaces that we became the world leader in bright, detailed, easy-to-read HMIs by understanding the needs of our customers. Easy installation and setup, simple operation and brilliant, high-visibility displays are just some of the features engineered into every Magelis HMI.

From the smallest text display to the most sophisticated industrial PC, Schneider Electric's Magelis HMI interfaces give you a clear window into your operations. Not only letting you know when all systems are good, but more importantly, helping keep them that way.

By focusing on the needs of our customers, we've earned a reputation for dependability, innovation and reliability that is the defining characteristic of Schneider Electric team members from around the world. This includes product specialists, industry experts, distributors, partners and the countless other members of the Schneider Electric family. Each is tasked with continuing our mission to help you make the most of your energy.

Safety & security. Reliability & productivity.
Aesthetics & comfort. Efficiency & sustainability.


Whatever your need Schneider Electric has the solution. Contact your local sales representative today to learn how Schneider Electric can improve operational performance and help your business to achieve a competitive advantage.

www.us.Schneider-Electric.com/HMI

Schneider Electric - North American Operating Division

Automation and Control Center of Excellence
8001 Knightdale Blvd.
Knightdale, NC 27545
Tel: 919-266-3671

www.Schneider-Electric.us

 This document has been
printed on recycled paper