

DomiOP eBIS507

The DomiOP eBIS Series 500 HMI products combine state-of-the-art features and top performance with an outstanding design. They are the ideal choice for all demanding HMI applications including factory and building automation.

The eTOP507 features a bright 7" TFT widescreen (16:9) display with LED backlight.

The JMobile software offers full vector graphic capabilities and plenty of connectivity options.



- 7" TFT color display, LED backlight
- 800x480 pixel (WVGA) resolution, 64K colors
- Resistive touchscreen
- 2 Ethernet ports with switch function
- 2 USB Host ports
- SD Card Slot
- Connection to bus systems using optional plug-in modules
- Slim design. Mounting depth less than 50mm

Highlights

The eBIS Series 500 HMI panels have been designed to run the JMobile software.

- JMobile runtime included. Full compatibility with JMobile Studio.
- Full vector graphic support. Native support of SVG graphic objects. Transparency and alpha blending.
- Full object dynamics: control visibility and transparency, move, resize, rotate any object on screen. Change properties of basic and complex objects.
- TrueType fonts
- Multilanguage applications. Easily create and manage your applications in multiple languages to meet global requirements. Far East languages are supported. Tools available in JMobile Studio support easy third-party translations and help reducing development and maintenance costs of the application
- Data display in numerical, text, bargraph, analog gauges and graphic image formats.
- Rich set of state-of-the-art HMI features: data acquisition, alarm handling, scheduler and timed actions (daily and weekly schedulers, exception dates), recipes, users and passwords, e-RSS feeds, rotating menus
- Includes support for a wide range of communication drivers for Factory and Building Automation systems.
- Multiple drivers communication capability.
- Remote monitoring and control. Client-Server functionality. Mobile clients supported.
- Off-line simulation with JMobile Studio.
- Powerful scripting language for automating HMI applications. Script debugging improves efficiency in application development.
- Rich gallery of symbols and objects
- Project templates
- Optional plug-in modules for fieldbus systems, I/O and controllers.



Everything for your HMI running

✉ sales@vicpas.com

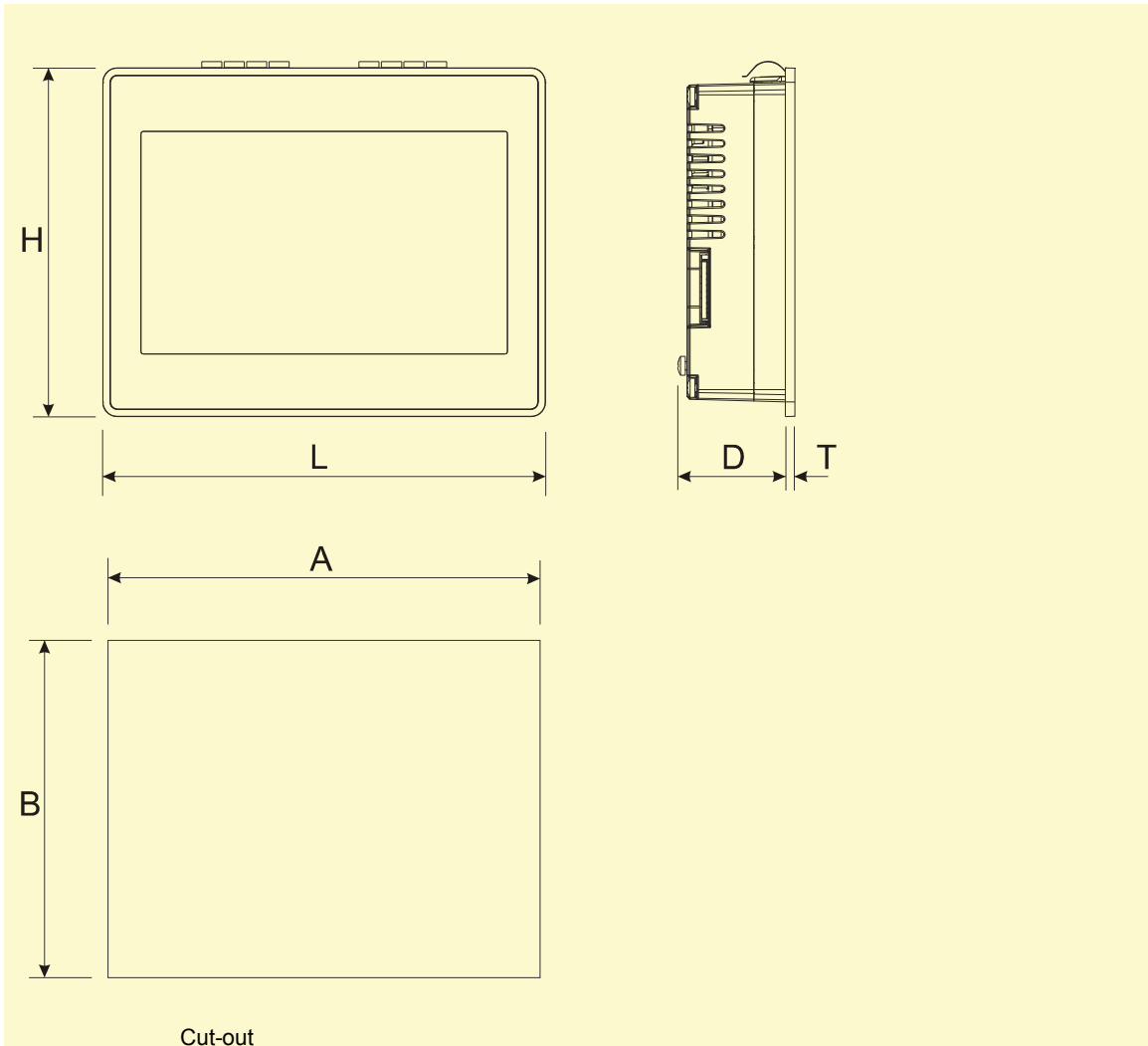
☎ +86-15876525394

Technical Data

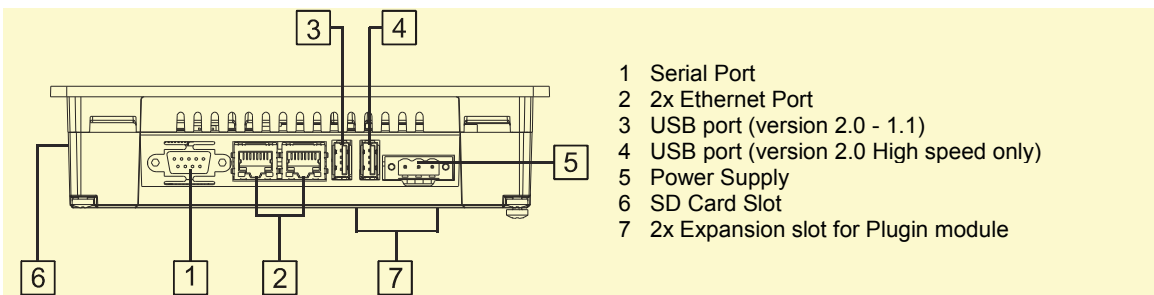
Display Type TFT Resolution 800x480, WVGA Active display area 7" diagonal Colors 64K Backlight LED Brightness 300 Cd/m ² typ. Dimming Yes		Hardware Real Time Clock Screen saver Yes Buzzer Yes, audible feedback for touchscreen
System Resources Operating System Microsoft Windows CE 6.0 User memory 128 MB Flash RAM 256MB DDR		Ratings Power supply voltage 24 Vdc (18 to 30 Vdc) Current consumption 0.7A at 24Vdc(max.) Fuse Automatic Weight Approx 1.0 Kg Battery Rechargeable Lithium battery, not user-replaceable
Operator Interface Touchscreen Analog resistive User LED indicators 1 (dual color)		Environmental Conditions Operating temperature 5 to 40 °C (vertical installation) Storage temperature -20 to +70 °C Operating and storage humidity 5 – 85 % relative humidity, non-condensing Protection class IP20
Interface Ethernet 2 10/100 Mbit with integrated Switch USB 2 Host Interface (1 version 2.0, 1 version 2.0 and 1.1) Serial RS-232, RS-485, RS-422, software configurable Expansion Slot 2 Optional Plugin Memory Card SD Card Slot		Dimensions Faceplate LxH 187x147 mm (7.36x5.79") Cutout AxB 176x136 mm (6.93x5.35") Depth D+T 47+4 mm (1.85+0.16")
Functionality Vector graphics Yes, includes SVG support Object dynamics Yes. Visibility, opacity, position, size, rotation for most object types. TrueType fonts Yes Multiple driver communication Yes Data acquisition and trend presentation Yes. Flash memory storage Multilanguage Yes, with runtime language switching. Recipes Yes. Flash memory storage Alarms Yes Historical event list Yes Users and passwords Yes		Approvals CE EN 50090-2-2 + EN 50090-2-2/A1+EN 50090-2-2/A2 Immunity EN 61000-6-1, Emission EN 61000-6-3 for installation in residential environments



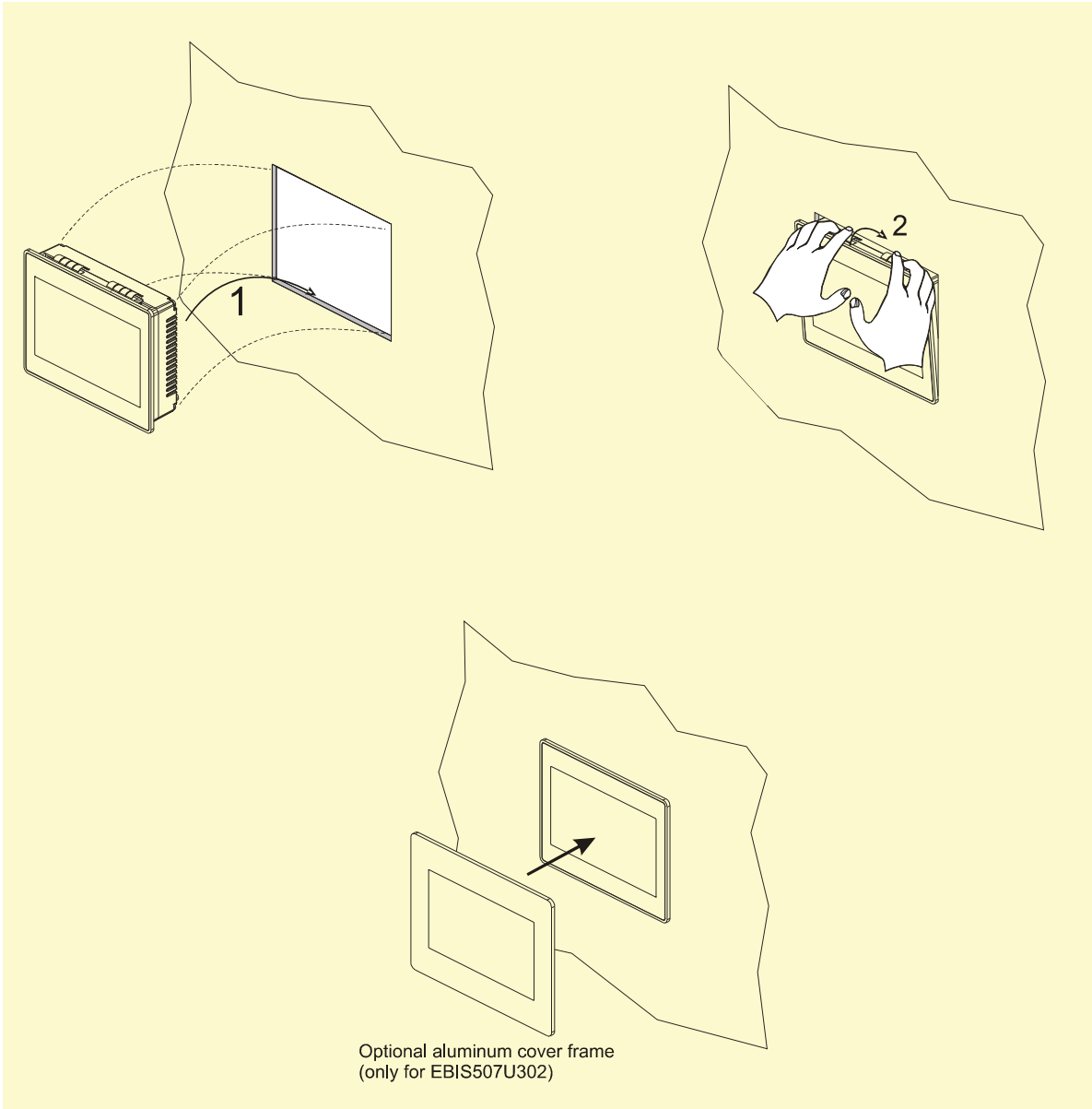
Dimensions



Connections



Mounting into Wall-mount Box



Ordering Information

Model	Part Number	Description
eBIS507-White	+EBIS507U101 +EBIS507U103	7" widescreen TFT color touchscreen with Ethernet and USB interfaces. JMobile run-time. White front panel.
eBIS507-Silver	+EBIS507U201 +EBIS507U203	7" widescreen TFT color touchscreen with Ethernet and USB interfaces. JMobile run-time. Silver front panel.
eBIS507-Black	+EBIS507U301 +EBIS507U303	7" widescreen TFT color touchscreen with Ethernet and USB interfaces. JMobile run-time. Black front panel.
eBIS507-Black with cover	+EBIS507U302 +EBIS507U304	7" widescreen TFT color touchscreen with Ethernet and USB interfaces. JMobile run-time. Black front panel, with additional cover
COVER07-01	R-COVER013	Aluminum cover frame for eBIS507 – only for +EBIS507U302/+EBIS507U304
BOX507-01	R-BOX11	Wall-mount box for eBIS507

ptn0376

Ver. 1.6

Copyright © 2011-2014 Exor International S.p.A. – Verona, Italy

Subject to change without notice

The information contained in this document is provided for informational purposes only. While efforts were made to verify the accuracy of the information contained in this documentation, it is provided "as is" without warranty of any kind.

www.uniop.com



Everything for your HMI running

✉ sales@vicpas.com

☎ +86-15876525394