

LISTEN.
THINK.
SOLVE.®

PanelView Plus 7 Operator Interface

Standard and Performance



PUBLIC



Allen-Bradley • Rockwell Software

Rockwell
Automation

Agenda

**Rockwell
Automation**

PanelView Plus 7 Portfolio Overview

PanelView Plus 7 Standard Details

PanelView Plus 7 Catalog Numbers & Accessories

Summary

PanelView Portfolio

**Rockwell
Automation**



PanelView™
Classic

PanelView
Standard

PanelView
Enhanced

PanelView
Plus

PanelView
Plus
Compact

PanelView
Plus 6

...

An evolution of graphic terminals since 1989

PanelView Portfolio

**Rockwell
Automation**



PanelView Plus 7 operator interface extends the portfolio further

PanelView Plus 7 Operator Interface

Standard and Performance Models

**Rockwell
Automation**

More Screen Options ...

Greater Resolutions ...

Additional Certifications ...

- New Displays
 - Increased screen resolution
 - Wide screen options
 - Additional sizes – from 4" to 19"
- Certifications:
 - ATEX Zone 2/22 on all DC touch models
 - IECEx on PanelView Plus 7 Performance DC touch models
 - IP66, IP54, NEMA 12, NEMA 13 and NEMA 4X



***Standard and
Performance models***

PanelView Plus 7 Standard HMI

Features & Benefits

**Rockwell
Automation**

Machine Builder Focused

OEM Optimized Design

- Expanded Processing Power
- Composite bezel

Competitive Solution

- More screen options
- Greater resolution
- Wide screen options

Application Size Limits

- 1 Controller
- ≤50 (25 on-top, 25 replace) screens
- ≤500 Alarms

Standard

- 4.3"W, 5.7", 6.5", 9"W, 10.4", 12"W, 15"
- Low profile composite bezel
- Resistive touch screen
- Single or DLR Ethernet ports
- ARM processor
- 512 MB Flash Memory / 512 MB RAM
- Windows CE 6.0 standard features
- DC powered
- Removable battery
- Targeted for simpler / smaller applications
- ATEX Certification, Class 1 Div. 2

PanelView Plus 7 Performance HMI

For Demanding Industries

**Rockwell
Automation**

Larger Applications

Robust Design

Expanded Processing Power

Larger Applications—

Examples:

- ≤300 Screens
- ≤3,000 Tags
- ≤400 Alarms

Ideal for a Variety of Industries

- Process
- Metals
- Mining / Aggregate
- Tire and Rubber

Performance

- 6.5", 9"W, 10.4", 12"W, 19"
- Low profile painted aluminum bezel and stainless steel options
- Resistive touch screen with keypad options
- DLR ethernet ports
- X86 processor
- 512 MB Flash Memory / 512 MB RAM
- Windows CE 6.0 extended features
- DC and AC power options
- Targeted at larger / complex applications
- ATEX Zone 2/22 for DC touch only
- UL Class 1 Div. 2
- IECEx Rated (DC touch units only)

SD Card Data Storage

Quick and Easy Terminal Copy and Restore

Use an SD card to quickly create copies of a terminal to reduce your time to market or restore a terminal.

- Operating system
- Network configuration and terminal settings
- FactoryTalk® View Machine Edition (ME) runtime file
- Datalogs and Recipe files



PanelView Plus 7 Graphic Terminal

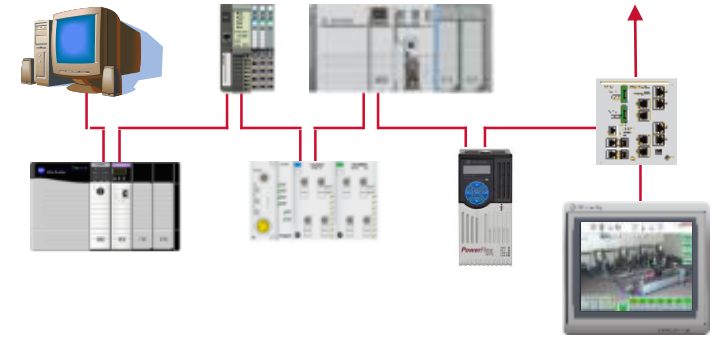
Ethernet Connectivity

**Rockwell
Automation**

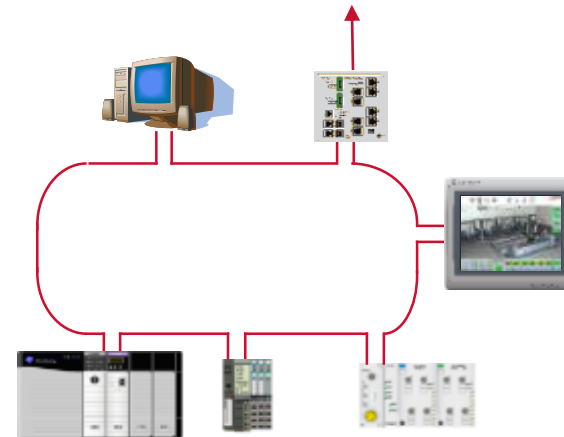
Available communication options:

- Ethernet Only
- Standard 4"-15" Single or DLR Ethernet Port
- Performance 7"-19" DLR Ethernet port

Single Ethernet
Port in Standard
terminal example



Embedded DLR
using Standard or
Performance
terminals example



PanelView Plus 7 HMI

Clamps

The Standard and Performance clamps look different:

- The clamps for the PanelView Plus 7 line are designed to create the right amount of clamping pressure around the unit with break away tabs to prevent over torqueing. Each clamp is two sided, so if you break one side, you can use the other.
- The system is designed to allow customers to mount the terminals with no tools. See product literature for the clamping sequence.
- At full release, there will be two different clamp styles. One for Standard (Grey) and one for Performance (Black). They are not meant to be used cross platform because the Performance (Black) clamps allow for a higher clamping torque and can crack the bezel on the Standard terminal.

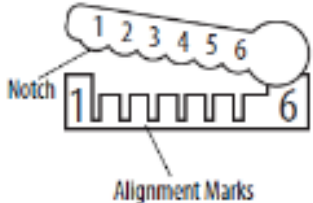
The PanelView Plus 7 Performance stainless steel models use 2711P-RTMC clamps

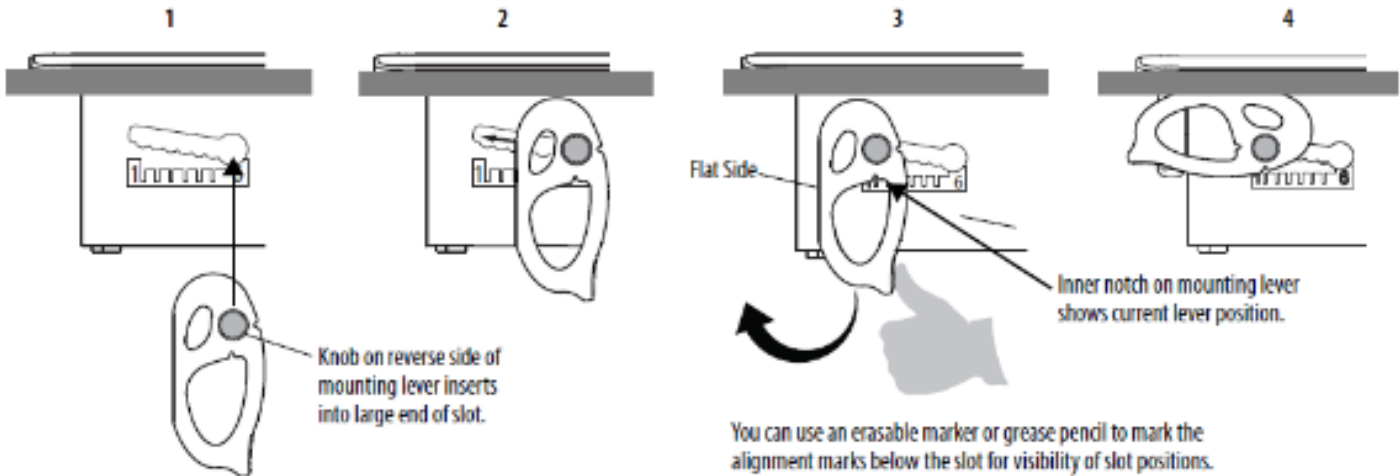
PanelView Plus 7 Operator Interface

Clamps

Clamp details

- Based on the panel thickness, choose the Mounting Lever Lock Position, slide the clamp into that position and rotate the clamp.
- Choosing the wrong position could cause the clamp to break.

Mounting Slot	Mounting Lever Lock Position	Panel Thickness Range	Typical Gauge
	1	1.50...2.01 mm (0.060...0.079 in.)	16
	2	2.03...2.64 mm (0.08...0.104 in.)	14
	3	2.67...3.15 mm (0.105...0.124 in.)	12
	4	3.17...3.66 mm (0.125...0.144 in.)	10
	5	3.68...4.16 mm (0.145...0.164 in.)	8/9
	6	4.19...4.80 mm (0.165...0.188 in.)	7



Size	No. of Clamps
4" W	4
6"	6
7"	6
9" W	8
10"	10
12" W	10
15"	12

PanelView Plus 7 Comparison of Features

Product Features	PanelView Plus 7 Standard model	PanelView Plus 7 Performance model
FactoryTalk Machine Edition	Y	Y
ViewPoint	Y	Y
Memory RAM / Flash	512 MB / 512 MB	512 MB / 512 MB
PDF Viewer	Y	Y
Active X Controls (Email, DataStorePlus, Recipe)	Y	Y
Remote Terminal Control (Based on VNC)	Y	Y
FTP Server	Y	Y
MPEG Video playback	N	Y
Microsoft Office Viewers	N	Y
Microsoft Internet Explorer	N	Y
Remote Desktop Services	N	Y
Ethernet Connectivity	Y (Single port or DLR)	Y (DLR Only)
CPU	ARM 1Ghz	x86 1.6Ghz
Screen Sizes	4.3"-15"	6.5", 9"W, 10.4", 12"W, 19"
Application Sizes	1 Controller, 50 (25 on-top, 25 replace) Screens, 500 Alarms	Larger Applications
Catalog numbers	2711P-xxxxx8S	2711P-xxxxx9P



PanelView Plus 7 Standard

Learn about the features and benefits of the terminals

PanelView Plus 7 Standard

**Rockwell
Automation**

***Decreased Time to Market...
Increased Screen Resolution...***

Standard Model – Single Ethernet

- Machine Builder Focus
- Sizes: 4"-15"
- Single Ethernet or DLR
- Touch Screen
- Low Profile, Composite Bezel
- FactoryTalk View Machine Edition - supporting MER files back to 5.1
- 7 Catalogs – Allen-Bradley® Branded
- 7 Catalogs – No Branding



Widescreens

New Display Sizes.....

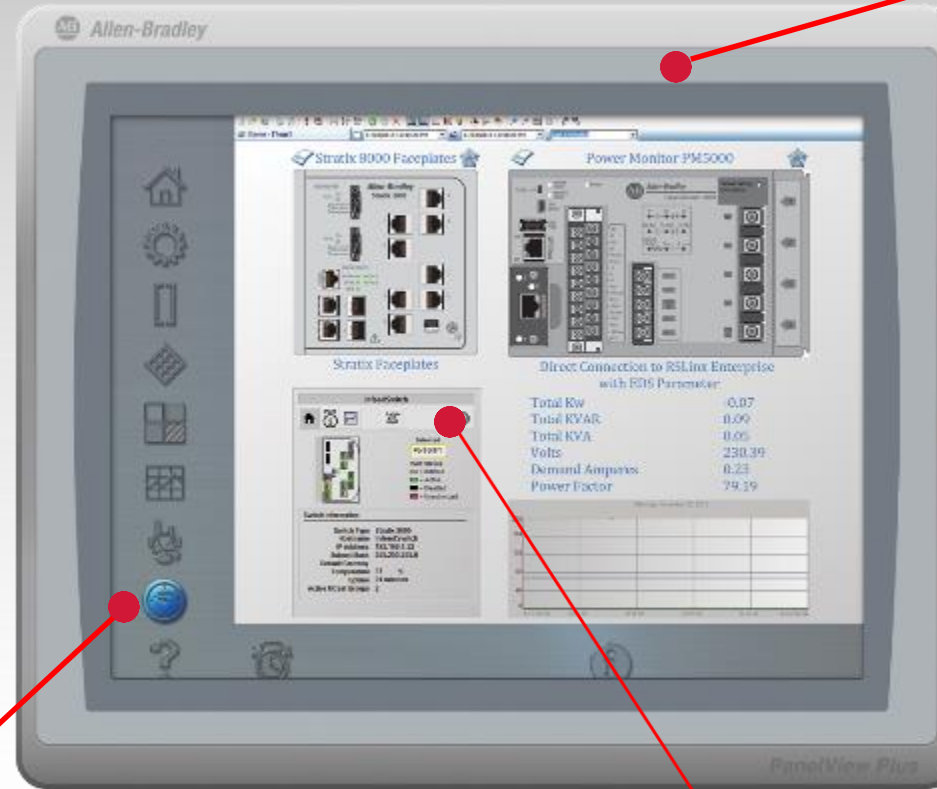
ATEX Certifications

PanelView Plus 7 Standard Anatomy

**Rockwell
Automation**

Mobile ready with VNC support
support and FactoryTalk
Viewpoint

ATEX and UL Class 1, Div 2 for
demanding environments



With the embedded PDF Viewer, show:

- User Manuals
- Installation Manuals
- SOPs (Standard Operating Procedures)

Faceplates and Add-on Instructions can
save 50 - 90% of complex screen
development time

PanelView Plus 7 Standard Anatomy

**Rockwell
Automation**

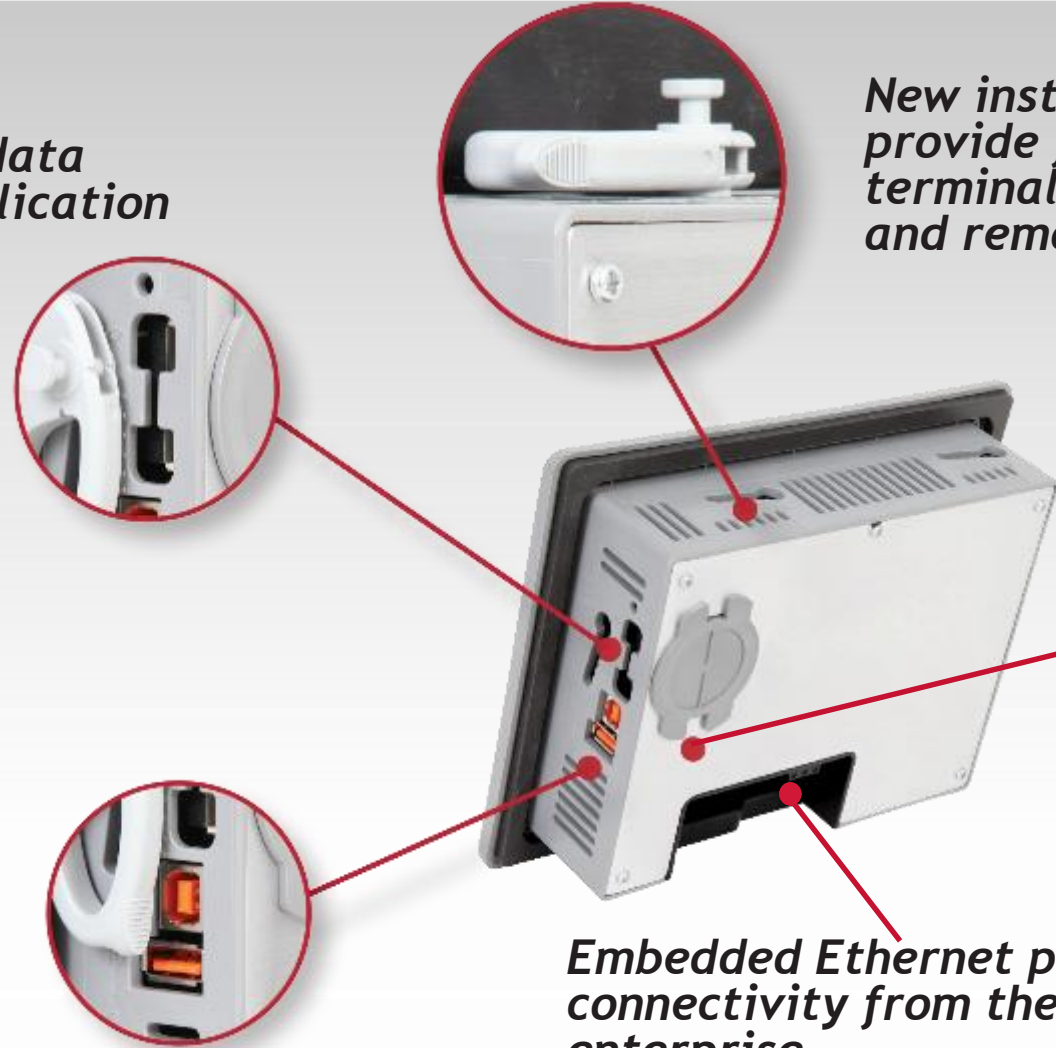
SD storage card slot for data storage and terminal replication

New installation clamps provide fast and simple terminal installation and removal

Easy access battery cover

USB Ports for quick upload and download to the terminal

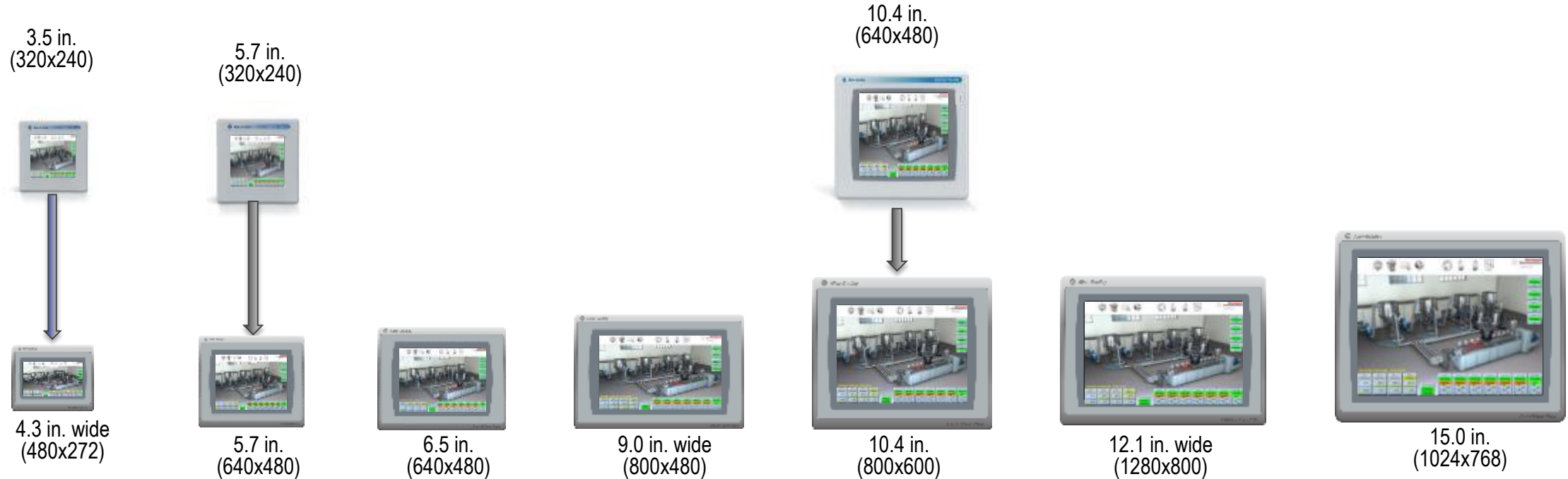
Embedded Ethernet port for connectivity from the machine to the enterprise



PanelView Plus 6 Compact vs PanelView Plus 7 HMI Standard Display Sizes

**Rockwell
Automation**

PanelView Plus 7 Standard HMI



PanelView Plus 7 Standard Graphic Terminal

More screens sizes and greater resolution

PanelView Plus 7 Standard Catalog Numbers

Single Ethernet

**Rockwell
Automation**

Catalog Number	PanelView Plus 7 Standard EOI Description
2711P-T4W21D8S	4" WQVGA TFT color, Touch, DC powered, Single Ethernet port
2711P-T6C21D8S	6" VGA TFT color, Touch, DC powered, Single Ethernet port
2711P-T7C21D8S	7" VGA TFT color, Touch, DC powered, Single Ethernet port
2711P-T9W21D8S	9" WVGA TFT color, Touch, DC powered, Single Ethernet port
2711P-T10C21D8S	10" SVGA TFT color, Touch, DC powered, Single Ethernet port
2711P-T12W21D8S	12" WXGA TFT color, Touch, DC powered, single Ethernet port
2711P-T15C21D8S	15" XGA TFT color, Touch, DC powered, single Ethernet port
2711P-T4W21D8S-B	4" WQVGA TFT color, Touch, DC powered, Single Ethernet port, with blank bezel
2711P-T6C21D8S-B	6"VGA TFT color, Touch, DC powered, Single Ethernet port, with blank bezel
2711P-T7C21D8S-B	7" VGA TFT color, Touch, DC powered, Single Ethernet port, with blank bezel
2711P-T9W21D8S-B	9" WVGA TFT color, Touch, DC powered, Single Ethernet port, with blank bezel
2711P-T10C21D8S-B	10" SVGA TFT color, Touch, DC powered, Single Ethernet port, with blank bezel
2711P-T12W21D8S-B	12" WXGA TFT color, Touch, DC powered, single Ethernet port, with blank bezel
2711P-T15C21D8S-B	15" XGA TFT color, Touch, DC powered, single Ethernet port, with blank bezel

PanelView Plus 7 Standard Catalog Numbers

Device Level Ring

**Rockwell
Automation**

Catalog Number	PanelView Plus 7 Standard EOI Description
2711P-T4W22D8S	4" WQVGA TFT color, Touch, DC powered, DLR Ethernet port
2711P-T6C22D8S	6" VGA TFT color, Touch, DC powered, DLR Ethernet port
2711P-T7C22D8S	7" VGA TFT color, Touch, DC powered, DLR Ethernet port
2711P-T9W22D8S	9" WVGA TFT color, Touch, DC powered, DLR Ethernet port
2711P-T10C22D8S	10" SVGA TFT color, Touch, DC powered, DLR Ethernet port
2711P-T12W22D8S	12" WXGA TFT color, Touch, DC powered, DLR Ethernet port
2711P-T15C22D8S	15" XGA TFT color, Touch, DC powered, DLR Ethernet port
2711P-T4W22D8S-B	4" WQVGA TFT color, Touch, DC powered, DLR Ethernet port, with blank bezel
2711P-T6C22D8S-B	6"VGA TFT color, Touch, DC powered, DLR Ethernet port, with blank bezel
2711P-T7C22D8S-B	7" VGA TFT color, Touch, DC powered, DLR Ethernet port, with blank bezel
2711P-T9W22D8S-B	9" WVGA TFT color, Touch, DC powered, DLR Ethernet port, with blank bezel
2711P-T10C22D8S-B	10" SVGA TFT color, Touch, DC powered, DLR Ethernet port, with blank bezel
2711P-T12W22D8S-B	12" WXGA TFT color, Touch, DC powered, DLR Ethernet port, with blank bezel
2711P-T15C22D8S-B	15" XGA TFT color, Touch, DC powered, DLR Ethernet port, with blank bezel

PanelView Plus 7 Adapter Plates & PanelView Plus 7 Family Accessories

**Rockwell
Automation**

Catalog Number	PanelView Plus 7 Standard EOI Description
2711P-T4W21D8S	4" WQVGA TFT color, Touch, DC powered, Single Ethernet port
2711P-T6C21D8S	6" VGA TFT color, Touch, DC powered, Single Ethernet port
2711P-T7C21D8S	7" VGA TFT color, Touch, DC powered, Single Ethernet port
2711P-T9W21D8S	9" WVGA TFT color, Touch, DC powered, Single Ethernet port
2711P-T10C21D8S	10" SVGA TFT color, Touch, DC powered, Single Ethernet port
2711P-T12W21D8S	12" WXGA TFT color, Touch, DC powered, single Ethernet port
2711P-T15C21D8S	15" XGA TFT color, Touch, DC powered, single Ethernet port
2711P-T4W21D8S-B	4" WQVGA TFT color, Touch, DC powered, Single Ethernet port, with blank bezel
2711P-T6C21D8S-B	6"VGA TFT color, Touch, DC powered, Single Ethernet port, with blank bezel
2711P-T7C21D8S-B	7" VGA TFT color, Touch, DC powered, Single Ethernet port, with blank bezel
2711P-T9W21D8S-B	9" WVGA TFT color, Touch, DC powered, Single Ethernet port, with blank bezel
2711P-T10C21D8S-B	10" SVGA TFT color, Touch, DC powered, Single Ethernet port, with blank bezel
2711P-T12W21D8S-B	12" WXGA TFT color, Touch, DC powered, single Ethernet port, with blank bezel
2711P-T15C21D8S-B	15" XGA TFT color, Touch, DC powered, single Ethernet port, with blank bezel

Accessories

- Mounting Levers - 2711P-RMCS
- AC Terminal Blocks - 2711P-RTBAP
- Protective Overlays - 2711P-RGTxS (x is terminal size)
- SD Card Covers - 2711P-RCKS
- DC Terminal Blocks - 2711P-RTBDSP
- Battery Covers - 2711P-RYKS



PanelView Plus 7 Performance Operator Interface

Learn about the features and benefits of the terminals

PanelView Plus 7 Performance HMI

**Rockwell
Automation**

- Machine builder and end user focus
- Sizes: 6.5", 9"W, 10.4", 12"W, 19"
- Stainless steel with conformal coating options available
- Dual Ethernet DLR connectivity
- Touch screen or keypad options
- Available in AC or DC
- No limitations
- FactoryTalk® View Machine Edition v8
- 14 Catalogs – Allen-Bradley® branded
- 14 Catalogs – No branding
- IECEx and ATEX Zone 2/22 Rated on DC touch models



***Widescreens
New Display Sizes.....
Dual Ethernet DLR***

PanelView Plus 7 Performance

**Rockwell
Automation**

Mobile ready with VNC support and FactoryTalk Viewpoint

Widescreen, keypad and touchscreen options



With the embedded PDF Viewer, show:

- User Manuals
- Installation Manuals
- SOPs (Standard Operating Procedures)

Faceplates and Add-on Instructions can save 50 – 90% of complex screen development time

PanelView Plus 7 Performance

**Rockwell
Automation**

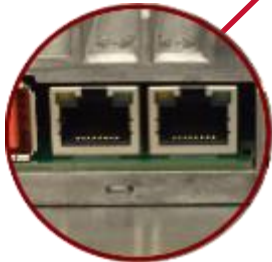
USB Ports for
quick upload and
download to
the terminal



New installation clamps
provide fast and simple
terminal installation
and removal



Embedded dual
Ethernet port with DLR
connectivity



SD storage card slot for
data storage and
terminal replication



Stainless Steel Features

- IP66, NEMA 4X, CE, UL
- Stainless steel 304 bezel
- Replaceable blue food-grade silicon gasket (FDA 21 CFR 177.2600)
- Conformally coated (ISA 71.04 G3)
- Brandless only units on 9in W and 12in W
- Target industries: food and beverage



PanelView Plus 7

Productivity Tools

**Rockwell
Automation**

- Use Datastore Plus to log data to identify and adjust process variation; View and Analyze in Microsoft Excel
- Configure email notifications for critical equipment alarms
- RDP client feature helps make the PanelView Plus 7 HMI into a thin client terminal
- Web browser ActiveX to embed HTML pages inside the HMI application
- Video playback support provides advanced “user help” capability
- Load maintenance manuals directly on terminal
 - Bookmark important pages and tie them to critical alarms
 - Identify and fix fault codes quickly

PanelView Plus 7

Mobility Tools

**Rockwell
Automation**

FactoryTalk ViewPoint - Extend visualization and real-time decision capabilities to browser-based remote users:

- On-demand web access from anywhere
- Supports multiple browsers / client devices

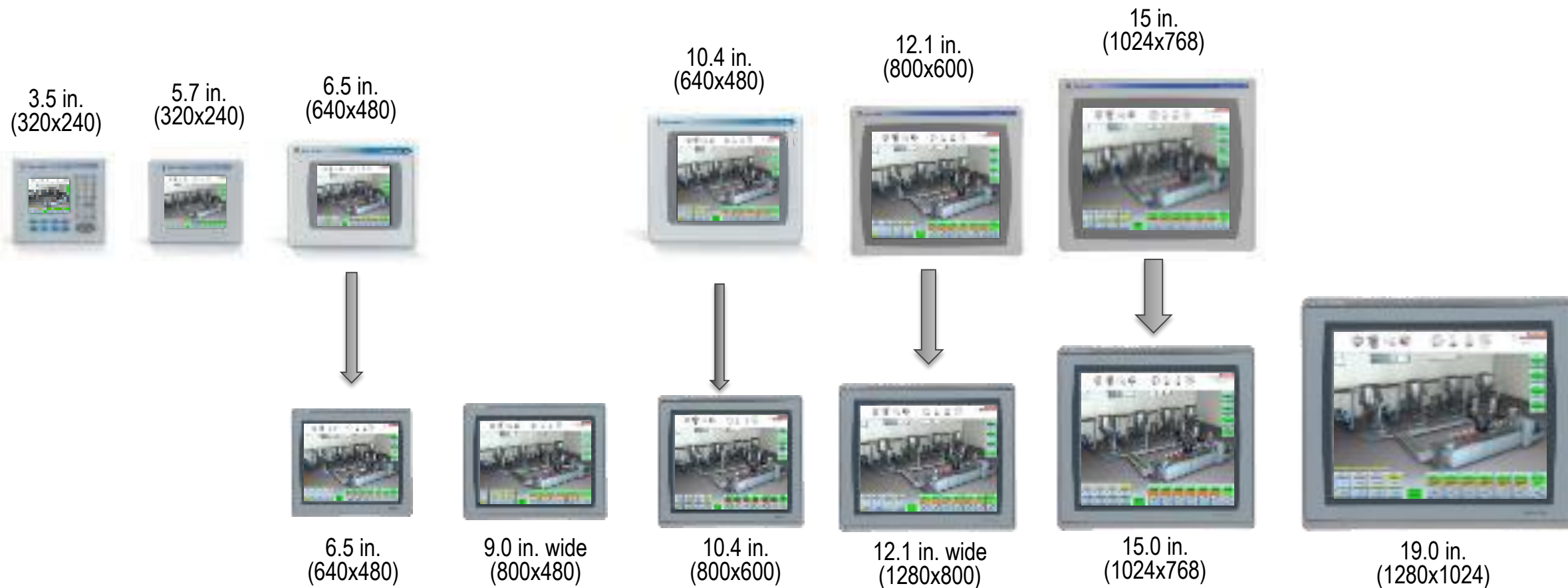
Virtual Network Computing (VNC) - Extends graphical desktop sharing of a PanelView Plus 7 terminals and its content to remote users

File Transfer Protocol (FTP) - allows transferring of files to/from your PC to PanelView Plus 7 terminals, including alarm logs, data logs, CSV Recipe Files, PDF manuals and videos



PanelView Plus 6 vs PanelView Plus 7 Performance Display Sizes

**Rockwell
Automation**



PanelView Plus 6 to PanelView Plus 7 adapter plates will be available for Performance lines only

PanelView Plus 7 Performance

Catalog Numbers

**Rockwell
Automation**

Catalog Number	PanelView Plus 7 Performance EOI Description	Screen Resolution	Bezel dimensions
2711P-T7C22D9P	7" VGA TFT color, Touch, DC powered	640 x 480 VGA	170 x 212 x 69.6 mm; 6.69 x 8.35 x 2.74 in.
2711P-T7C22A9P	7" VGA TFT color, Touch, AC powered	640 x 480 VGA	170 x 212 x 69.6 mm; 6.69 x 8.35 x 2.74 in.
2711P-B7C22D9P	7" VGA TFT color, Keypad/Touch, DC powered	640 x 480 VGA	179 x 285 x 69.6 mm; 7.05 x 11.22 x 2.74 in.
2711P-B7C22A9P	7" VGA TFT color, Keypad/Touch, AC powered	640 x 480 VGA	179 x 285 x 69.6 mm; 7.05 x 11.22 x 2.74 in.
2711P-T9W22D9P	9" WVGA TFT color, Touch, DC powered	800 x 480 WVGA	190 x 280 x 69.6 mm; 7.48 x 11.02 x 2.74 in.
2711P-T9W22A9P	9" WVGA TFT color, Touch, AC powered	800 x 480 WVGA	190 x 280 x 69.6 mm; 7.48 x 11.02 x 2.74 in.
2711P-T10C22D9P	10" SVGA TFT color, Touch, DC powered	800 x 600 SVGA	252 x 297 x 69.6 mm; 9.92 x 11.69 x 2.74 in.
2711P-T10C22A9P	10" SVGA TFT color, Touch, AC powered	800 x 600 SVGA	252 x 297 x 69.6 mm; 9.92 x 11.69 x 2.74 in.
2711P-B10C22D9P	10" SVGA TFT color, Keypad/Touch, DC powered	800 x 600 SVGA	252 x 385 x 69.6 mm; 9.92 x 15.16 x 2.74 in.
2711P-B10C22A9P	10" SVGA TFT color, Keypad/Touch, AC powered	800 x 600 SVGA	252 x 385 x 69.6 mm; 9.92 x 15.16 x 2.74 in.
2711P-T12W22D9P	12" WXGA TFT color, Touch, DC powered	1280 x 800 WXGA	240 x 340 x 69.6 mm; 9.69 x 13.39 x 2.74 in.
2711P-T12W22A9P	12" WXGA TFT color, Touch, AC powered	1280 x 800 WXGA	240 x 340 x 69.6 mm; 9.69 x 13.39 x 2.74 in.
2711P-T15C22D9P	15" XGA TFT color, Touch, DC powered	1024 x 768 XGA	318 x 381 x 69.6 mm; 12.52 x 15.00 x 2.74 in
2711P-T15C22A9P	15" XGA TFT color, Touch, AC powered	1024 x 768 XGA	318 x 381 x 69.6 mm; 12.52 x 15.00 x 2.74 in
2711P-B15C22D9P	15" XGA TFT color, Keypad/Touch, DC powered	1024 x 768 XGA	329 x 484 x 69.6 mm; 12.95 x 19.06 x 2.74 in
2711P-B15C22A9P	15" XGA TFT color, Keypad/Touch, AC powered	1024 x 768 XGA	329 x 484 x 69.6 mm; 12.95 x 19.06 x 2.74 in
2711P-T19C22D9P	19" SXGA TFT color, Touch, DC powered	1280 x 1024 SXGA	411 x 485 x 69.6 mm; 16.18 x 19.09 x 2.74 in
2711P-T19C22A9P	19" SXGA TFT color, Touch, AC powered	1280 x 1024 SXGA	411 x 485 x 69.6 mm; 16.18 x 19.09 x 2.74 in

For Brandless Option - Add "- B" to the catalog number

PanelView Plus 7 Performance HMI

Stainless Steel Catalog Numbers

**Rockwell
Automation**

Catalog Numbers	Description
2711P-T9W22D9P-BSHK	PanelView Plus 7 Performance, 9 in. wide, Stainless Steel Hygienic, Conformally Coated, Brandless
2711P-T12W22D9P-BSHK	PanelView Plus 7 Performance, 12 in. wide, Stainless Steel Hygienic, Conformally Coated, Brandless
2711P-RGST9W	Gasket, Silicone, 9 in. wide, for use with Stainless Steel Hygienic
2711P-RGST12W	Gasket, Silicone, 12 in. wide, for use with Stainless Steel Hygienic

PanelView Plus 7 Performance

Adapter Plates and Accessories

**Rockwell
Automation**

Catalog #	PanelView Plus 7 Performance Adapter Plate Description
2711P-RAAT7	PanelView Plus 700 touch terminal to PanelView Plus 7 6.5" display touch terminal
2711P-RAAK7	PanelView Plus 700 keypad/keypad touch or PanelView Standard 600 keypad/keypad touch To PanelView Plus 7 6.5" display keypad touch terminal
2711P-RAAT10	PanelView Plus 1000 touch/PanelView Standard 900 touch terminal To PanelView Plus 7 10.4" display touch terminal
2711P-RAAK10	PanelView Plus 1000 keypad/keypad touch or PanelView Standard 900 keypad/keypad touch To PanelView Plus 7 10.4" display keypad touch terminal
2711P-RAAT12	PanelView Plus 1250 touch/PanelView Standard 1000 touch terminal To PanelView Plus 7 12.1" display touch terminal
2711P-RAATK12	PanelView Plus 1250 keypad/keypad touch or PanelView Standard 1000 keypad/keypad touch To PanelView Plus 7 12.1" display touch terminal
2711P-RAAT15	PanelView Plus 1500 touch to PanelView Plus 7 15" display touch terminal
2711P-RAAK15	PanelView Plus 1500 keypad/keypad touch to PanelView Plus 7 15" display keypad touch terminal
2711P-RTMC	PanelView Plus 6 mounting clips for use with PanelView Plus 7 Performance stainless models

Accessories

- Mounting Levers - 2711P-RMCP
- AC Terminal Blocks - 2711P-RTBAP
- Protective Overlays - 2711P-RGTxS (x is terminal size)

Summary

- PanelView Plus 7 Standard and Performance Models
 - Lead product for new applications
 - Extends our portfolio with more display sizes and certifications
 - Reflects our commitment to application longevity
- Same FactoryTalk View software across all PanelView Plus product lines



LISTEN.
THINK.
SOLVE.®

PanelView Plus 7 Operator Interface



PUBLIC



Connect with us.

www.rockwellautomation.com



Allen-Bradley • Rockwell Software

Rockwell
Automation