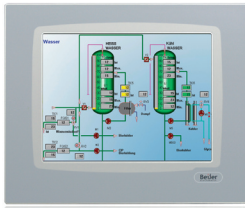


# INDUSTRY PC - EPC T120 C2D



## Industry-PC EPC T120 C2D

### Features

- Intel Core™ Duo
- 12.1" TFT display
- Resistive Touch
- Optional Front USB
- Operation on 24 VDC or wide range AC internal PSU
- Long term availability
- Embedded operating system
- Reliable industrial design
- Customer configuration examples deliverable

### TECHNICAL DATA

Front panel	
Size in inches	12.1"
WxH resolution in pixels	800 x 600
Coloration (depending on the display)	16 mio colors
Type of data entry	Resistive touch
Degree of protection	IP65 on the front
Power supply	
Operating voltage	24 VDC +/- 20% or 115-230 +/- 15% VAC
Power consumption	ca. 4.0 / 1.0 A
System	
Processor	Intel Core2Duo 2,2 GHz / Celeron > 1,6 GHz
Main memory	1 GB - 4 GB
External storage media (CFC)	2 GB - 8 GB
Internal mass memory (CFC/HDD)	2 GB - 8 GB/ HDD automotive 80 GB / SSD
Operating system	Windows XP professional, Windows XP embedded, Windows 7
Interfaces	
Serial	2 x RS232
Ethernet	2 x 10/100/1000 Mbps
Keypad / mouse	2 x PS/2
Printer	-
Monitor	VGA + DVI-I
USB	4 x USB 2.0 (Option: Front USB)
Slots	2 x PCI (max. 220 mm)
Communication modules	MPI, Profibus, CANopen, Device Net
General information	
Frame material	Aluminum
Front foil	acid-resistant polyester foil
Outer dimensions in mm WxHxD	364 x 296 x 133
Panel profile in mm WxH	345 x 277
Weight	ca. 7 kg
Operating temperature	0 to 50° C
Storage temperature	-20 to 70° C
Order information	
Description of item	EPC T120 C2D DC / EPC T120 C2D AC

# INDUSTRY PC - EPC T120 C2D

## Industry-PC EPC T120 C2D

### Field of application

Beijer Electronics EPC series is designed for installation in a control cabinet, either as Panel PC in front door or as Box PC inside. EPC series represents a powerful platform for factory floor applications and are suitable for demanding visualization or control tasks where sufficient room for plug-in cards is required. These include SCADA software packages, image processing and SQL databases. The industry-friendly touch interface allows you to enter parameters directly on the screen.

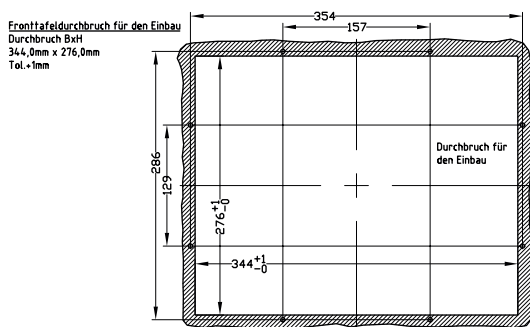
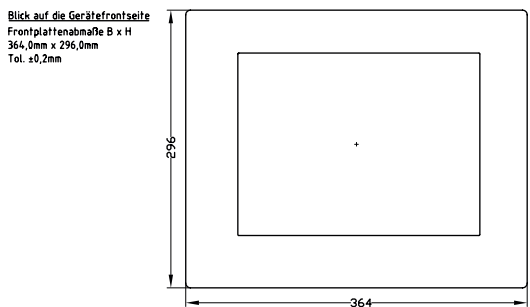
### Technical description

With its high performance based on a Intel Core™ Duo CPU it is ideal for a multitude of applications.

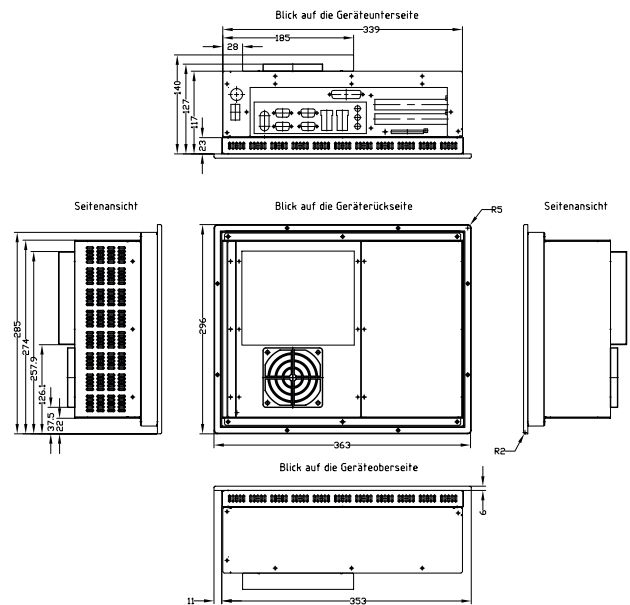
It is increasingly used in LAN networks with parent systems, particularly thanks to the fast GBit networks. A multitude of onboard interfaces and optional fieldbus connections make the EPC C2D a multitalent in connection with other control components.

Configuration options allow for its use in any industrial application. The device can be delivered with a pre-installed operating system and is thus ready to go. The touch panel PC is suitable for panel mount integration.

## Drawings:



Befestigungsart mit 8 Stück in der Frontplatte eingepressten Gewindebolzen M4x16  
Maximale Dicke des Einbaurahmens 5mm.



EPC-PM Box ist mit allen Aufbauten gezeigt, ohne Laufwerk beträgt die Bauhöhe typ. 117mm und ist nur im Lüfterbereich 127mm hoch. Die Maximalthöhe an der höchsten Stelle beträgt 140mm ab der Frontplattenrückseite.