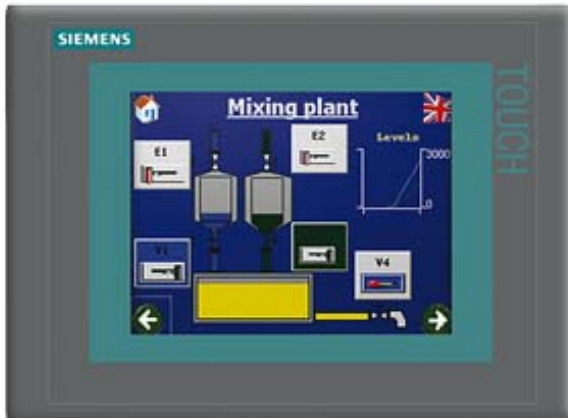


\*\*\*Spare part\*\*\* as of 01.01.2015 the product is blocked for delivery and can no longer be ordered as a new part. For information on the successor See FAQ Entry ID: 82203106. For further questions, the familiar contact partners are available. "SIPLUS HMI TP 277 6"" Touch" for medial exposure based on 6AV6643-0AA01-1AX0



General information	
Product type designation	TP277
Customer-specific configuration	Yes
Display	
Design of display	TFT
Screen diagonal	5.7 in
Color display	Yes
Number of colors	256
Resolution (pixels)	
• Horizontal image resolution	320 Pixel
• Vertical image resolution	240 Pixel
Backlighting	
• MTBF backlighting (at 25 °C)	60 000 h
Control elements	
Control elements	Touch screen
Keyboard fonts	
• Numeric keyboard	Yes
• alphanumeric keyboard	Yes

• hexadecimal keyboard	Yes
<b>Touch operation</b>	
• Design as touch screen	Yes; analog, resistive
<b>Connection type</b>	
• Type of connection for mouse/keyboard/barcode reader	USB / USB / USB
<b>Installation type/mounting</b>	
Mounting position	vertical
<b>Supply voltage</b>	
Type of supply voltage	DC
<b>Processor</b>	
Processor type	RISC 32 bit
<b>Memory</b>	
Type of memory	Flash / RAM
Memory available for user data	4 Mbyte
Capacity of main memory, max.	64 Mbyte
<b>Time of day</b>	
Clock	
• Type	Software clock, synchronizable, no battery backup
• retentive	No
• synchronizable	Yes
<b>Interfaces</b>	
Interfaces/bus type	1x RS 422, 1x RS 485, 1x Ethernet (RJ45)
Number of industrial Ethernet interfaces	1
Number of RS 485 interfaces	1
Number of RS 422 interfaces	1
Number of USB interfaces	1
Multimedia card/SD card slot	1x MultiMediaCard slot
<b>Degree and class of protection</b>	
IP (at the front)	IP65
IP (rear)	IP20
<b>Standards, approvals, certificates</b>	
Suitable for safety functions	No
<b>Ambient conditions</b>	
Ambient temperature during operation	
• min.	0 °C
• max.	50 °C
Ambient temperature during storage/transportation	
• min.	-20 °C

• max.	60 °C
<b>Altitude during operation relating to sea level</b>	
• Ambient air temperature-barometric pressure-altitude	Tmin ... Tmax at 1 080 hPa ... 795 hPa (-1 000 m ... +2 000 m) // Tmin ... (Tmax - 10 K) at 795 hPa ... 658 hPa (+2 000 m ... +3 500 m) // Tmin ... (Tmax - 20 K) at 658 hPa ... 540 hPa (+3 500 m ... +5 000 m)
<b>Relative humidity</b>	
• Operation, max.	100 %; RH incl. condensation/frost permitted (no commissioning in bedewed state)
<b>Resistance</b>	
<b>Use in stationary industrial systems</b>	
— to biologically active substances according to EN 60721-3-3	Yes; Class 3B2 mold, fungus and dry rot spores (with the exception of fauna); Class 3B3 on request
— to chemically active substances according to EN 60721-3-3	Yes; Class 3C4 incl. salt spray. The supplied connector covers must remain on the unused interfaces during operation!
— to mechanically active substances according to EN 60721-3-3	Yes; Class 3S4 incl. sand, dust. The supplied connector covers must remain on the unused interfaces during operation!
<b>Operating systems</b>	
pre-installed operating system	Windows CE
<b>Configuration</b>	
Message indicator	Yes
Alarm system (incl. buffer and acknowledgment)	Yes
Process value display (output)	Yes
Process value default (input) possible	Yes
Recipe management	Yes
<b>Configuration software</b>	
• Configuration tool	WinCC flexible Standard Version 2005 SP1 or higher (to be ordered separately)
<b>Languages</b>	
<b>Online languages</b>	
• Number of online/runtime languages	16
<b>Project languages</b>	
• Languages per project	32
<b>Functionality under WinCC (TIA Portal)</b>	
Libraries	Yes
Task planner	Yes
Help system	Yes
• Number of characters per info text	80
<b>Message system</b>	
• Number of alarm classes	32
• Number of messages	4 000
• Bit messages	Yes

— Number of bit messages	4 000
• Analog messages	Yes
— Number of analog messages	4 000
• System messages HMI	Yes
• System messages PLC	Yes
• System messages, other (SIMATIC S7, Sinumerik, Simotion, etc.)	Yes
• Lines	1
• Number of characters per message	80
• Number of process values per message	8
• Acknowledgment groups	
— Number of acknowledgement groups	Yes
• Message indicator	Yes
• First/last value	Yes
<b>Recipe management</b>	
• Number of recipes	300
• Data records per recipe	500
• Entries per data record	1 000
• Recipe memory	64 KB integrated Flash, expandable (using optional memory card)
<b>Variables</b>	
• Number of variables per device	2 048
• Number of variables per screen	200
• Number of variables	1 000
• Type Date & Time	2 048
• Limit values	Yes
• Multiplexing	Yes
• Structures	Yes
<b>Images</b>	
• Number of configurable images	500
• Permanent window/default	Yes
• Start screen configurable	Yes
• Image selection by PLC	Yes
• Image number in the PLC	Yes
<b>Image objects</b>	
• Text objects	10,000 text elements
• Number of I/O fields per image	200
• Number of date/time fields	200
• Return	Yes
• Graphics object	Bit maps, icons, vector graphics
— Icons	1 000
<b>Complex image objects</b>	

• Status/control	With SIMATIC S7
• dynamic objects	Diagrams, bar graphs, sliders, analog display, invisible buttons
— Number of objects per project	1 000
— Number of curve diagrams per image	10
• Methods	Trend / profile
• Bar graphs	
— Number of bars per chart	10
• Sliders	
— Number of slides per image	10
• Pointer instruments	
— Number of analog indicators per image	10
• Limit value lines	Yes
• Number of alphanumeric fields	300
— alphanumeric fields per image	200
• Number of numerical fields	2 048
— numerical fields per image	200
• Number of password fields	2 048
• Number of visible switches per project	200
— visible switches per image	200
— hidden switches per image	200
• Number of status switches per project	200
— Number of status switches per image	200
• Number of selector switches per project	200
— Selector switches per image	200
• Number of decade switches per project	200
— Decade switches per image	200
• Number of signal lamps per project	200
— Signal lamps per image	200

#### Attributes for dynamic objects

• Color change	Yes
• X/Y movement	Yes
• Hide	Yes

#### Lists

• Number of text lists per project	500
• Number of text lists per image	200
• Number of entries per text list	256
• Number of graphics lists per project	400
• Number of graphic lists per image	200
• Number of entries per graphics list	256

#### Archiving

• Number of archives per device	20
---------------------------------	----

• Number of measuring points per project	20
• Number of entries per archive	10 000
• Message archive	Yes
• Process value archive	Yes
• Archiving methods	
— Sequential archive	Yes
— Short-term archive	Yes
• Memory location	MultiMediaCard
— Ethernet	Yes
• Data storage format	
— CSV	Yes
• Online evaluation	
— using trend curves	Yes
<b>Filters</b>	
• cyclic	Yes
• Tolerance	Yes
• Change	Yes
<b>Security</b>	
• Number of user groups	50
• Number of user rights	32
• Password export/import	Yes
<b>Logging through printer</b>	
• Recording/Printing	Alarms, report (shift report), color print, hardcopy
<b>Transfer (upload/download)</b>	
• Transfer of configuration	MPI/PROFIBUS DP, USB, Ethernet, automatic transfer recognition
<b>Process coupling</b>	
• Connection to controller	S5, S7-200, S7- 300/400, TI 505, SINUMERIK, SIMOTION, Allen Bradley (DF1), Allen Bradley (DF485), Mitsubishi (FX), Telemecanique (ADJUST), OMRON (LINK/Multilink), Modicon (Modbus), see section on "System interfaces"
• S7-200	Yes
— PPI (point-to-point)	Yes
— PPI network	Yes
— MPI	Yes
— PROFIBUS DP	Yes
— Ethernet	Yes
• S7-300/400	Yes
— MPI	Yes
— PROFIBUS DP	Yes
— PROFINET	Yes
• S5	Yes

— serial	Yes
— PROFIBUS DP	Yes
• TI 505	Yes
• Allen Bradley (DF1)	Yes
• Allen Bradley (DF485)	Yes
• Mitsubishi (FX)	Yes
• Mitsubishi (MP4)	Yes
• Telemecanique (ADJUST)	Yes
• Telemecanique (Uni-Telway)	Yes
• OMRON (LINK/Multilink)	Yes
• Modicon (Modbus)	Yes
• GE-Fanuc (SNP)	Yes
<b>Functions</b>	
• TAB sequence	Yes
• Calculating functions	Yes
• Animate	Yes
<b>Service tools/configuration aids</b>	
• Clean screen	Yes
• Touch calibration	Yes
• Backup/Restore manually	Yes
• Simulation	Yes
• Device switchover	Yes
• Delta transfer	Yes
<b>Expandability/openness</b>	
• Open Platform Program	Yes
<b>Peripherals/Options</b>	
Peripherals	Printer, barcode reader
SIMATIC HMI MM memory card: Multi Media Card	Yes
Additional software components loadable	Yes
<b>Dimensions</b>	
Width of the housing front	212 mm
Height of housing front	156 mm
Mounting cutout, width	197 mm
Mounting cutout, height	141 mm
Overall depth	45 mm
<b>Weights</b>	
Weight (without packaging)	0.78 kg
<b>Other</b>	
free hotline	Yes

last modified:

09/25/2019

