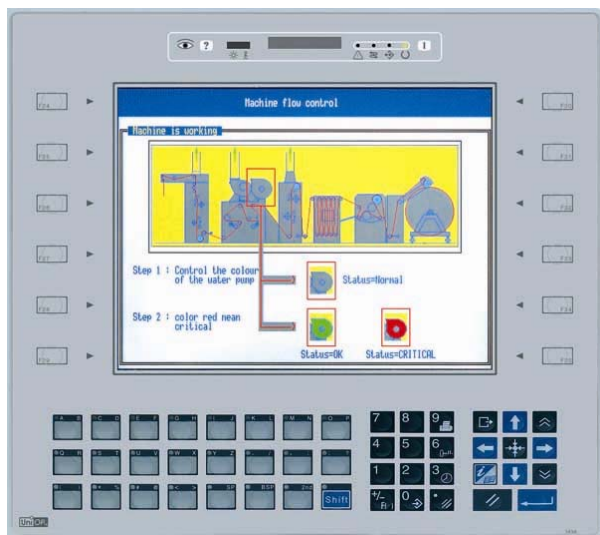


## UniOP ePAD33C

The ePAD33C is a state-of-the-art HMI device with a VGA graphic display and a complete keypad. The aluminum bezel offers an appealing look in a rugged and convenient flat design.



- 10.4" TFT color display
- 640x480 pixel resolution
- 64K colors
- 10/100 Ethernet interface
- USB port
- Connection to industrial bus systems using optional plug-in modules
- Compatible with video input module
- 64 MB user memory

### Highlights

The ePAD33C HMI panel is a member of the UniOP family of HMI products. The ePAD33C offers the rich functionality of the UniOP operator panels:

- Powerful and intuitive programming with the UniOP Designer 6 software
- Support of more than 150 communication drivers for industrial devices
- Built-in Ethernet port for connection to field devices as well as programming the HMI from Designer.
- USB host port for the connection of flash drives. Flash drives can be used for application upgrade as well as firmware upgrade of the device
- Optional plug-in modules for fieldbus systems and networks (Profibus DP, CANopen, DeviceNet, Interbus, KNX)
- Dual-driver communication capability
- Vector graphic capabilities including the support of multiple layers and object transparency.
- Video input option
- Display dynamic data in numerical, text, bargraph, analog gauges and graphic image formats
- Data acquisition and trend presentation. Trend data can be transferred to a host computer using the Ethernet connection.
- Recipe data storage. Recipe data can be transferred to a host computer using the Ethernet connection or copied to flash drives via USB connection.
- Multilanguage applications. The number of runtime languages is limited only by the available memory. All text information in the application can be exported in Unicode format for easier translation.
- Powerful macro editor to configure keypad operation
- Alarms and historical alarm list. Alarm and event information can be printed or transferred to a host computer.
- Eight level password protection.
- Report printing to serial printer. Reports are freely configurable using Designer.
- Ethernet-based UniNet network to share data between UniOP HMIs and to serve data using UniNet OPC Server.

## Technical Data

### Display

Type	TFT
Resolution	640x480 pixel
Active display area	218x159 mm (10.4" diagonal)
Colors	64K
Backlight	CCFL, 50 Kh <sup>(1)</sup>
Brightness	300 cd/m <sup>2</sup> typ.
Dimming	Yes

### Memory

User memory	64 MB internal Flash
Alternate User memory	Optional removable 32/64 MB SSFDC memory card

### Front panel

Touch screen	No
Function keys	35
System keys	24
User LED's	24
System LED's	4

### Interfaces

PC/Printer port	Yes, RS-232
PLC port	RS-232, RS-485, RS-422, 20 mA Current Loop
Ethernet port	10/100 Mbit
USB port	Host version 1.1 <sup>(2)</sup>
Aux port (fieldbus)	Yes, with optional modules
DX port (video input)	Yes
Serial programming speed	9600 – 38400 bps

### Functionality

Vector graphics	Yes
Dual driver capability	Yes
Video input	Yes
Data acquisition and trends	Yes
Recipe memory	Yes. Flash memory storage limited only by available memory <sup>(2)</sup>

### UniNet network

Alarms	Client/Server 1024
Event list	1024
Password	Yes
Hardware RTC	Yes, battery back-up
Screen saver	Yes
Buzzer	Yes, audible feedback for keyboard

### Ratings

Power supply voltage	24 V DC (18 to 30 Vdc)
Current consumption	Max 1.2 A at 24 Vdc
Fuse	Automatic
Weight	Approx 2.7 Kg
Battery	3 V 285 mA Lithium, non rechargeable, user replaceable, RENATA model CR2430. Replace with same component or equivalent.

### Environmental Conditions

Operating temperature	0 to 45 °C
Storage temperature	-20 to +70 °C
Operating and storage humidity	5 – 85 % RH non-condensing
Protection class	IP65 (front panel) IP20 (rear)

### Dimensions

Faceplate LxH	311x276 mm (12.24x10.87")
Cutout AxB	292x257 mm (11.50x10.12")
Mounting depth	91 mm (3.58")

### Approvals

CE	Emission EN 61000-6-4 Immunity EN 61000-6-2 for installation in industrial environments
----	--

Note 1: the lamp lifetime is the typical value for continuous operation at 25°C.

Note 2: operation of the built-in USB interface and recipe storage to flash memory require an appropriate firmware version and use of Designer 6.07 or higher.

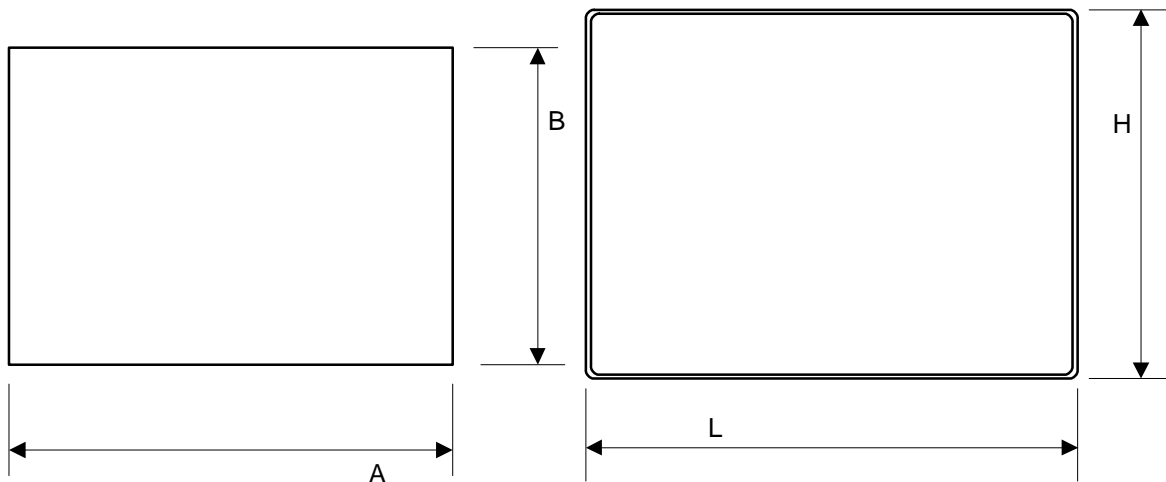


Figure 1 – Cutout and front view

### Ordering Information

ePAD33C-0050

10.4" VGA TFT color panel with keypad. Ethernet and USB interfaces.

**Tn293**

**Ver. 1.0**

**Copyright © 2008 Sitek S.p.A. – Verona, Italy**

Subject to change without notice

The information contained in this document is provided for informational purposes only. While efforts were made to verify the accuracy of the information contained in this documentation, it is provided "as is" without warranty of any kind.

[www.uniop.com](http://www.uniop.com)

tn293-0.doc - 7.08.2008  
UniOP ePAD33C

