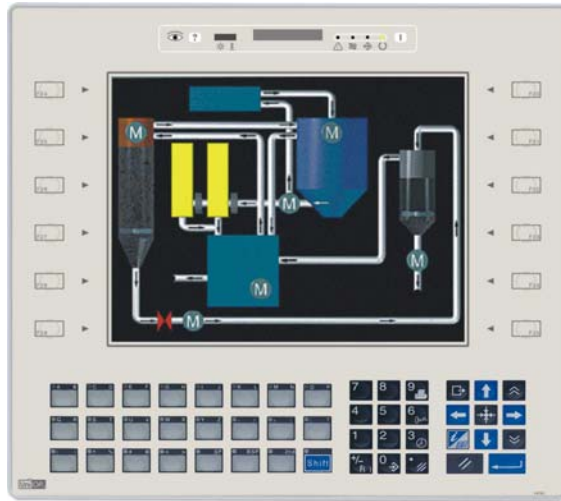


## UniOP ePAD32B, ePAD33B and ePAD33BT

The ePAD32B, ePAD33B and ePAD33BT are state-of-the-art HMI devices with a VGA graphic display and a complete keypad. The aluminum bezel offers an appealing look in a rugged and convenient flat design.

The product is also available with a touchscreen option.



- 9.6" monochrome and 10.4" TFT color displays
- VGA (640x480 pixel) resolution
- 64K colors (ePAD33B and ePAD33BT)
- Resistive touchscreen (ePAD33BT)
- Connection to industrial bus systems and Ethernet (requires optional plug-in modules)
- Compatible with video input module (ePAD33B and ePAD33BT)
- 32 MB internal user memory

### Highlights

The ePAD3xB HMI panels are part of the UniOP family of HMI products. All of the ePAD products support the rich common functionalities of the UniOP operator panels:

- Powerful and intuitive programming with the UniOP Designer 6 software
- Support of more than 130 communication drivers for industrial devices
- Optional modules for fieldbus systems (Profibus DP, CANopen, DeviceNet, Interbus) and Ethernet. Ethernet modules allow connection to field devices as well as programming the HMI from Designer.
- Dual-driver communication capability
- Vector graphic capabilities including the support of multiple layers and object transparency.
- Video input option (ePAD33B and ePAD33BT)
- Display dynamic data in numerical, text, bargraph and graphic image formats
- Data acquisition and trend presentation. Trend data can be transferred to a host computer using the Ethernet connection.
- Analog gauge objects
- Recipe data storage. Recipe data can be transferred to a host computer using the Ethernet connection.
- Multilanguage applications. The number of runtime languages is limited only by the available memory. All text information in the application can be exported in Unicode format for easier translation.
- Powerful macro editor to configure touchscreen operation
- Alarms and historical alarm list. Alarm and event information can be printed or transferred to a host computer using the Ethernet connection.
- Eight level password protection.
- Report printing to serial printer. Reports are freely configurable using Designer.
- Ethernet-based UniNet network to share data between UniOP HMIs and to serve data using UniNet OPC Server.

## Technical Data

<b>Display</b>		<b>Functionality</b>	
Type	ePAD32B monochrome ePAD33B TFT ePAD33BT TFT	Vector graphics	Yes
Resolution	VGA, 640x480 pixel	Dual driver capability	Yes
Active display area	ePAD32B 196x147 mm (9.6" diagonal) ePAD33B 218x159 mm (10.4" diagonal) ePAD33BT 218x159 mm (10.4" diagonal)	Video input	ePAD32B No ePAD33B Yes ePAD33BT Yes
Colors	ePAD32B 8 grey shades ePAD33B 64K ePAD33BT 64K	Data acquisition and trends	Yes
Backlight	ePAD32B CCFL ePAD33B CCFL, 50 Kh <sup>(note 1)</sup> ePAD33BT CCFL, 50 Kh <sup>(note 1)</sup>	Recipe memory	32 KB
Brightness	ePAD32B 100 cd/m <sup>2</sup> typ. ePAD33B 450 cd/m <sup>2</sup> typ. ePAD33BT 450 cd/m <sup>2</sup> typ.	UniNet network	Client/Server
Dimming	ePAD32B No ePAD33B Yes ePAD33BT Yes	Alarms	1024
<b>Memory</b>		Event list	1024
User memory	32 MB internal Flash	Password	Yes
User memory expansion	Optional removable 32 MB SSFDC memory card	Hardware RTC	Yes, battery backed
<b>Front panel</b>		Screen saver	Yes
Touch screen	Analog resistive (ePAD33BT)	Buzzer	Yes, audible feedback for keyboard and touch screen
Function keys	35	Battery	3 V 270 mA Lithium, non rechargeable, user replaceable, model CR2430. Replace with same component or equivalent compatible with the operating temperature of the product.
System keys	24	<b>Ratings</b>	
User LED's	24	Power supply voltage	24 V DC (18 to 30 V DC)
System LED's	4	Current consumption	Max 0.7 A at 24 VDC
<b>Interfaces</b>		Fuse	Automatic
PC/Printer port	Yes	Weight	Approx 2.3 Kg
PLC port	RS-232, RS-485, RS-422, 20 mA Current Loop	<b>Environmental Conditions</b>	
Aux port (fieldbus and Ethernet)	Yes, with optional modules	Operating temperature	0 to 45 °C
DX port (video input)	ePAD32B No ePAD33B Yes ePAD33BT Yes	Storage temperature	-20 to +70 °C
Serial programming speed	9600 – 38400 bps	Operating and storage humidity	5 – 85 % RH non-condensing
		Protection class	IP65 (front panel)
		<b>Dimensions</b>	
		Faceplate LxH	311x276 mm (12.24x10.87")
		Cutout AxB	292x257 mm (11.50x10.12")
		Mounting depth (type 0050)	91 mm (3.58")
		Max panel thickness	5 mm (0.2")

Note 1: the lamp lifetime is the typical value for continuous operation at 25°C.

The product is designed for installation in industrial environments in compliance with the regulations:

Emitted interference EN 61000-6-4, 2001  
Noise immunity EN 61000-6-2, 2001

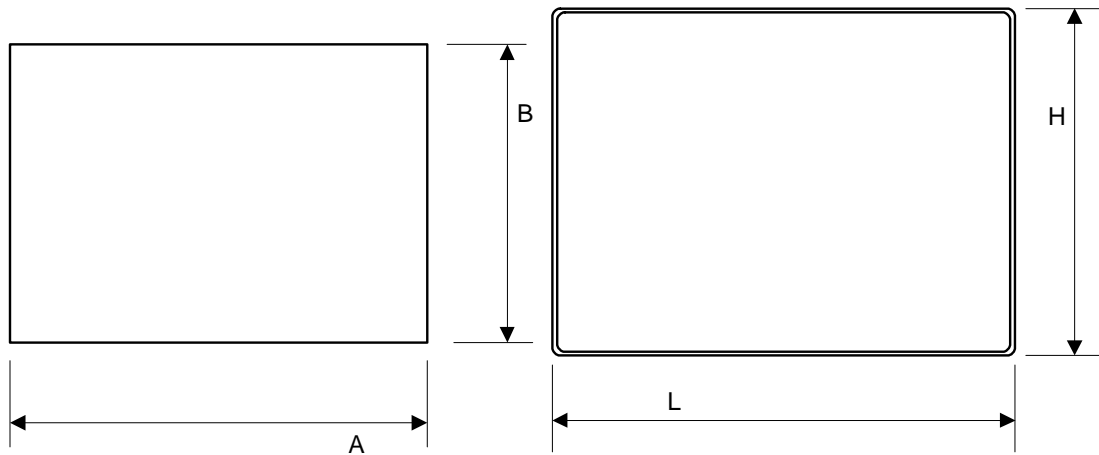


Figure 1 – Cutout and front view

### Ordering Information

ePAD32B-0050  
ePAD33B-0050  
ePAD33BT-0050

9.6" VGA monochrome panel with keypad  
10.4" VGA TFT color panel with keypad  
10.4" VGA TFT color panel with keypad and touchscreen

Tn221

Ver. 1.00

Copyright © 2004 Sitek S.p.A. – Verona, Italy

Subject to change without notice

The information contained in this document is provided for informational purposes only. While efforts were made to verify the accuracy of the information contained herein, it is provided "as is" without warranty of any kind.

www.exor-rd.com

AUDIN - 8, avenue de Courcelles

Tel : 03.26.04.20.21 - Fax : 03.26.04.28.20 - web : [www.audin.fr](http://www.audin.fr) - Email : [info@audin.fr](mailto:info@audin.fr)

tn221-0.doc - 5.04.2005

UniOP ePAD32B, ePAD33B and ePAD33BT

Everything for your HMI running

 [sales@vicpas.com](mailto:sales@vicpas.com)

 +86-15876525394