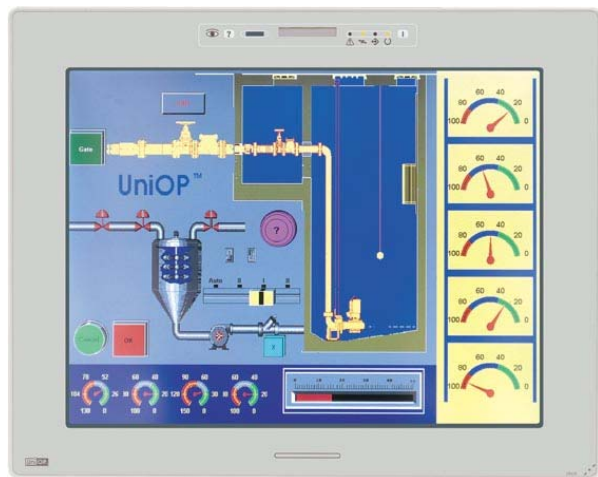


UniOP eTOP59CP

The eTOP59CP is a state-of-the-art HMI device featuring a high-brightness sunlight-readable 15" TFT color display with 1024x768 (XVGA) resolution and resistive touchscreen. This product has been specifically designed for use under extreme illumination conditions. Support for 64K colors in the brilliant TFT display will increase the realism of the images. Connectivity is ensured by the integrated 10/100 Ethernet interface and the dual-module option. The coated electronics makes this product ideal for applications in harsh environments.



- 15" TFT color display
- High brightness
- 1024x768 pixel (XVGA) resolution, 64K colors
- Resistive touchscreen
- 64 MB user memory
- 10/100 Ethernet interface
- USB port
- Dual-module option
- Compatible with local I/O
- Protective coating

Highlights

The eTOP HMI panels are part of the UniOP family of touchscreen products. All of the eTOP products support the rich common functionality of the UniOP operator panels:

- Powerful and intuitive programming with the UniOP Designer 6 software.
- Support of more than 150 communication drivers for industrial devices.
- Built-in Ethernet port for connection to field devices as well as programming the HMI from Designer.
- USB host port for the connection of flash drives. Flash drives can be used for application upgrade as well as firmware upgrade of the device.
- Optional plug-in modules for fieldbus systems and networks.
- Dual-driver communication capability.
- Vector graphic capabilities including the support of multiple layers and object transparency.
- Video input option.
- Display dynamic data in numerical, text, bargraph, analog gauges and graphic image formats.
- Data acquisition and trend presentation. Trend data can be transferred to a host computer using the Ethernet connection.
- Recipe data storage. Recipe data can be transferred to a host computer using the Ethernet connection or copied to flash drives via USB connection.
- Multilanguage applications. The number of runtime languages is limited only by the available memory. All text information in the application can be exported in Unicode format for easier translation.
- Powerful macro editor to configure touchscreen operation
- Alarms and historical alarm list. Alarm and event information can be printed or transferred to a host computer.
- Eight level password protection.
- Report printing to serial printer. Reports are freely configurable using Designer.
- Ethernet-based UniNet network to share data between UniOP HMIs and to serve data using UniNet OPC Server.

Technical Data

Display Type Resolution Active display area Colors Backlight Brightness Dimming	TFT XVGA, 1024x768 pixel 15"diagonal (304x228 mm) 64K CCFL, 50000 h ^(note 1) 650 cd/m ² typ. Yes	Hardware RTC Screen saver Buzzer	Yes, with battery back-up Yes Yes, audible feedback for touch screen
Memory User memory Alternate user memory	64 MB internal Flash Optional removable 32/64 MB SSFDC memory card	Ratings Power supply voltage Current consumption Fuse Weight Battery	24 V DC (18 to 30 Vdc) 1.7 A at 24 Vdc (max) Automatic Approx 4.2 Kg 3 V 285 mA Lithium, non rechargeable, user replaceable, RENATA model CR2430. Replace with same component or equivalent .
Front panel Touch screen Function keys System keys User LED's System LED's	Analog resistive 1 - 1 4	Environmental Conditions Operating temperature Storage temperature Operating and storage humidity Protection class	0 to 45 °C -20 to +70 °C 5 – 85 % RH non-condensing IP65 (front panel) IP20 (rear)
Interfaces PC/Printer port PLC port Ethernet port USB port Aux port (fieldbus) DX port (video input) Serial programming speed Local I/O	Yes, RS-232 RS-232, RS-485, RS-422 10/100 Mbit Host version 1.1 ^(note 2) 2, with optional modules ^(note 4) Yes ^(note 4) 9600 – 38400 bps Yes, with optional modules	Dimensions Faceplate LxH Cutout AxB Mounting depth D	392x307 mm (15.43x12.08") 381x296 mm (15.00x11.65 ") 101 mm (3.98")
Functionality Vector graphics Dual driver capability Video input Data acquisition and trends Recipe memory UniNet network Alarms Event list Password	Yes Yes Yes Yes Yes. Flash memory storage limited only by available memory ^(note 2) Client/Server 1024 1024 Yes	Approvals CE RINA Germanischer Lloyd	Emission EN 61000-6-4 Immunity EN 61000-6-2 for installation in industrial environments Type approval certificate for installation in naval environments ^(note 3) Type approval certificate, category C, EMC1 ^(note 3)

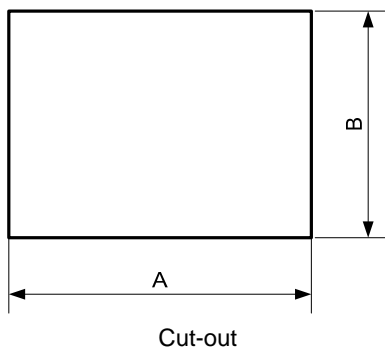
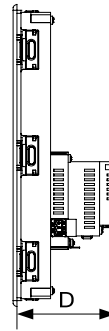
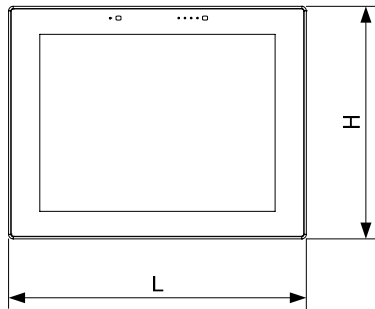
Note 1: the lamp lifetime is the typical value for continuous operation at 25°C.

Note 2: operation of the built-in USB interface and recipe storage to flash memory require an appropriate firmware version and use of Designer 6.07 or higher.

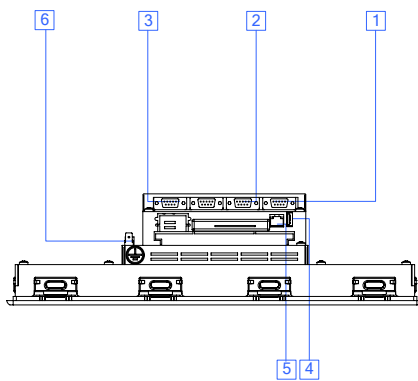
Note 3: a filter NEF 1-10 Phoenix Contact or equivalent must be installed to comply with emission limits for equipment installed in naval environments in the bridge and deck zone according to RINA/GL rules.

Note 4: the optional modules may be not available as RINA/GL certified components. Make sure you verify the updated specification of the products.

Dimensions



Connections



- 1 PC/Printer Port
- 2 PLC Port
- 3 Aux Port 1 and Aux Port 2
- 4 USB Port
- 5 Ethernet Port
- 6 Power Supply

Ordering Information

eTOP59CP-0052	15" XVGA high-brightness TFT color panel with touchscreen, dual option modules, protective coating
SCM05P-C	PLC module, CoDeSys, CANopen interface, protective coating
TCM09P	CANopen interface module, protective coating
UIM05P	Local I/O module, protective coating
PROT-06	Disposable protection foil for 15" eTOP touch panels (10 pieces)

tn280

Ver. 1.2

Copyright © 2008 Sitek S.p.A. – Verona, Italy

Subject to change without notice

The information contained in this document is provided for informational purposes only. While efforts were made to verify the accuracy of the information contained in this documentation, it is provided "as is" without warranty of any kind.

www.uniop.com

tn280-2.doc2 - 13.11.2008
UniOP eTOP59CP

