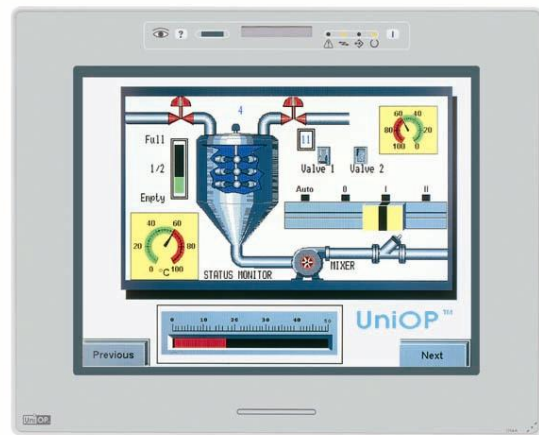


UniOP eTOP33

The eTOP33 is a state-of-the-art HMI device with a touch screen interface and a 10.4" TFT color graphic display. The aluminum bezel offers a rugged and convenient flat design and an appealing look.

Highlights

- 10.4" TFT color display
- VGA (640x480 pixels) resolution
- Shows up to 30 rows, 80 characters of information
- Resistive touch screen
- Connection to industrial bus systems and Ethernet (requires optional plug-in modules)
- Compatible with HMIcontrol and local I/O subsystems
- Large memory size (32 MB Flash) on removable media
- IP65 front panel protection



This eTOP HMI panels is part of the eTOUCH family of touch screen products. All of the eTOUCH products support the rich common functionality of the UniOP operator panels:

- Powerful and intuitive programming with the UniOP Designer 6 software
- Support of more than 130 communication drivers for industrial devices
- Optional modules for fieldbus systems (Profibus DP, DeviceNet, Interbus, CANopen) and Ethernet
- Dual-driver communication capability
- Vector graphic capabilities
- Display dynamic data in numerical, text, bargraph and graphic image formats
- Data acquisition and trend presentation
- Analog gauges
- Recipe data storage
- Multilanguage applications. Number of runtime languages limited only by memory.
- Powerful macro editor to configure touch screen operation
- Alarms and historical alarm list
- Eight level password protection
- Report printing to serial printer

Technical data

The product is available in one version.

	Display	Colors	Backlight	Lifetime
eTOP33	TFT color LCD	256	CCFL	50000 h typ

Display	
Graphic resolution	640x480 pixels
Brightness	450 cd/m ²
Active display area	218x159 mm (10.4" diagonal)
Scalable fonts	Yes
User definable characters	256
Brightness regulation	-
Memory	
User memory	32 MB SSFDC memory card
User memory expansion	-
Front panel	
Function keys	-
System keys	-
Touch screen	Analog resistive (guaranteed 3 M operations)
User LED's	-
System LED's	5
Connections	
PC/Printer port	Yes
PLC port	RS-232, RS-485, RS-422, 20 mA CL
Aux port (fieldbus and Ethernet connection)	Yes, with optional modules
Programming speed	9600 - 38400 bps
Functionality	
Number of variables per page	Unlimited
Pixel and vector graphics	Yes
Dual driver capability	Yes
Recipe memory	32 KB
UniNet network	Client/Server
Alarms	1024
Event list	1024
Password	Yes
Battery	Yes
Hardware RTC	Yes, battery backed
Screen saver	Yes
Buzzer	Yes, audible feedback for touch screen
Power supply voltage	18 - 30 VDC
Current consumption	Max 700 mA at 24 VDC
Fuse	
Weight	



Operating temperature	0 to 45 °C
Storage temperature	-20 to +70 °C
Operating and storage humidity	5 - 85 % RH non-condensing
Protection class	IP65 (front panel)

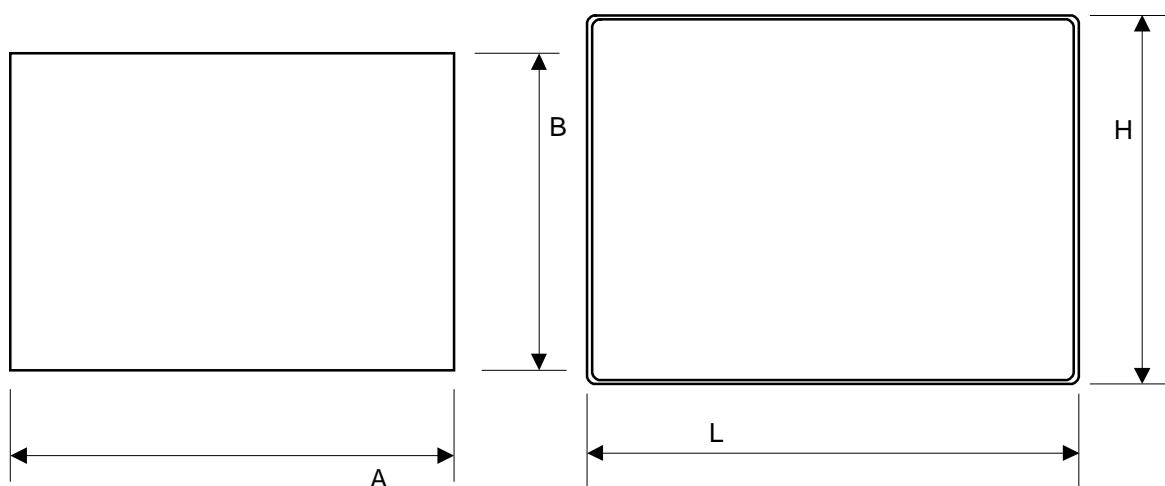
The product is designed for installation in industrial environments in compliance with the regulations:

Emitted interference EN 61000-6-4, 2001

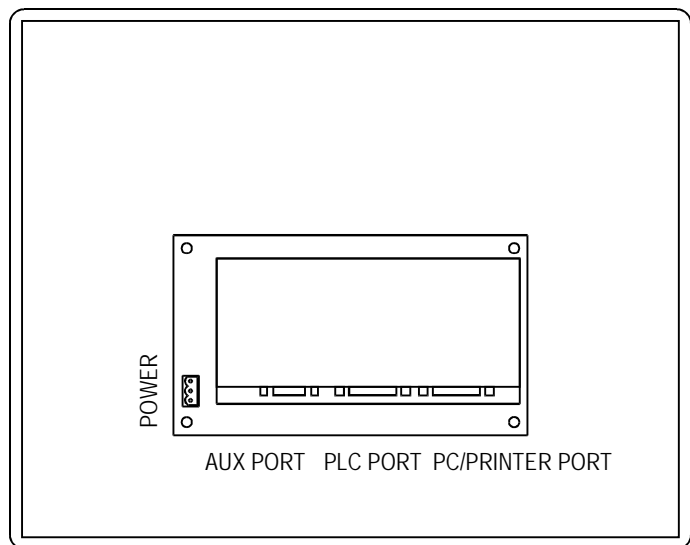
Noise immunity EN 61000-6-2, 2001

Front dimensions and cutout

Faceplate LxH	287x232 mm	11.30x9.14"
Cutout AxB	276x221 mm	10.87x8.70"
Cutout depth (version -0050)	91 mm	3.58"
Max panel thickness	5 mm	0.2"



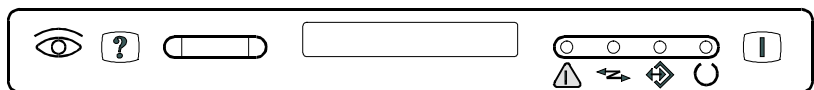
Connections



Indicators on the front panel

There are several dedicated LED indicators on the front panel of the unit. Functions are described in the table below.

A customizable legend strip is included.





Elements not listed in the table are reserved for future use.

LED	Color	Status	Meaning
👁️	red	OFF	No hardware problem detected
		BLINK	Battery low
	ON	Hardware fault	
👁️	green	OFF	No touch cell active
		ON	While any touch cell is active (visual feedback)
🔄	green	OFF	Hardware fault
		ON	Unit in operation
🔄	green	BLINK	Communication error
		ON	Communication OK
⚠️	red	OFF	No alarms
		BLINK	Alarm requires acknowledgment
		ON	Alarm active
↔️	green		May be user controlled as LED number 65 using the Macro Editor. Turns ON when recipe/event backup is being performed.

The service area at the top of the product contains buttons.



Button	Description
	User programmable with the Keyboard Macro Editor. Not available in RDA. Designer 5.08 SP7 or higher is required.
	Reserved for future use

Ordering Information

eTOP33-0050
PROT-04

10.4" VGA TFT color panel with touchscreen
Disposable protection film for touchscreen (10 foils)

Tn182

Copyright © 2002, 2004 Sitek S.p.A. Italy

Subject to change without notice

www.exor-rd.com



Everything for your HMI running

✉ sales@vicpas.com

☎ +86-15876525394