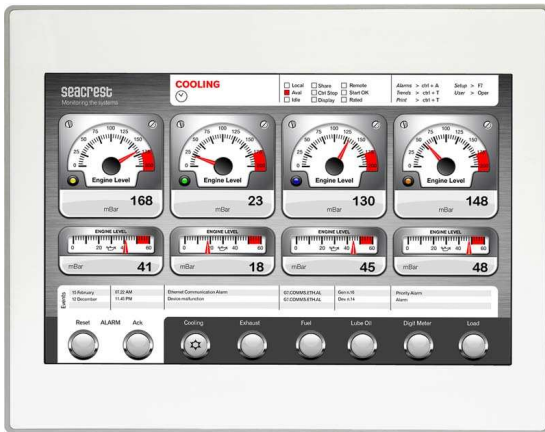


UniOP eTOP313

The UniOP eTOP Series 300 combines state-of-the-art features and performance with an outstanding design. They are the ideal choice for HMI applications including factory and building automation. The eTOP313 features widescreen 13.3" TFT display with state-of-the-art resolution and full vector graphic capabilities. This is the ideal product for high-end HMI applications. Connections include Ethernet and USB.



- 13.3" TFT color display, LED backlight
- 1280x800 pixel (WXGA) resolution, 64K colors
- Advanced vector graphics
- Resistive touchscreen
- 64 MB user memory
- 10/100 Ethernet interface
- USB interface
- Connection to bus systems using optional plug-in modules
- Slim design. Mounting depth less than 50mm

Highlights

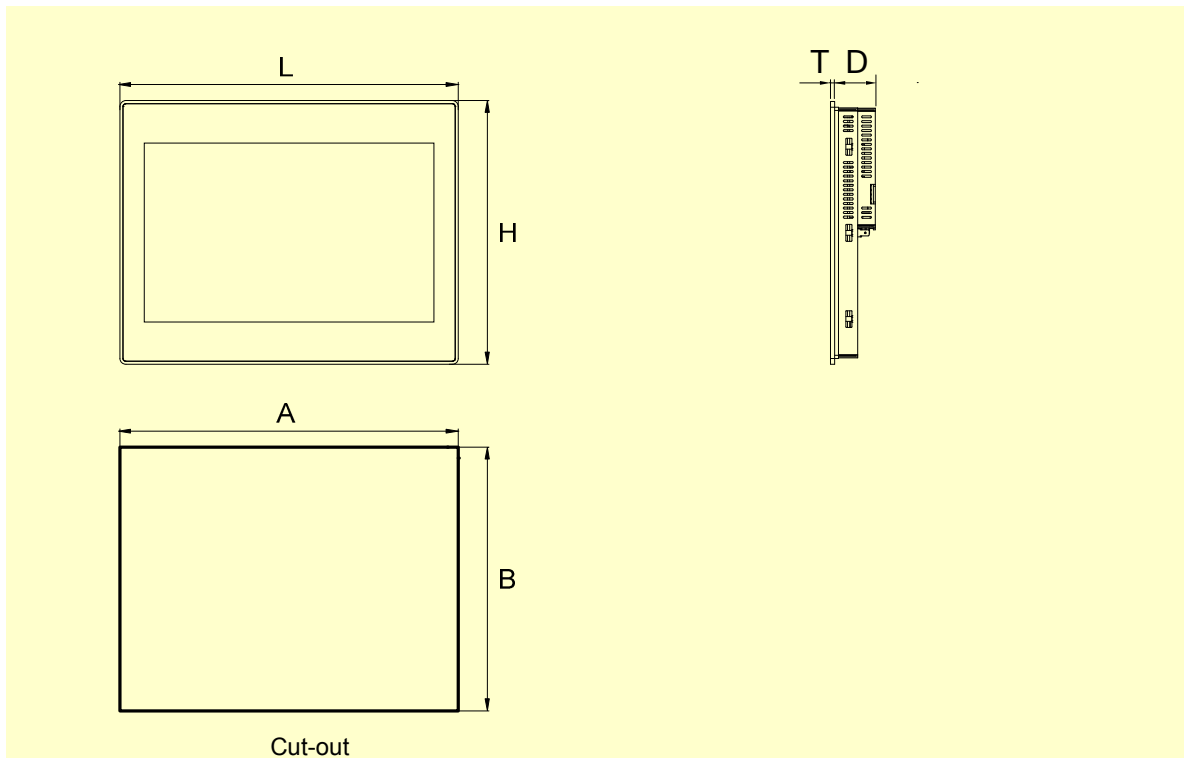
The eTOP Series 300 HMI panels are fully compatible with UniOP Designer 6 software.

- Powerful and intuitive programming with the UniOP Designer 6 software.
- Supports more than 150 communication drivers.
- Built-in Ethernet port for communication with devices, programming the HMI from Designer and retrieving data from computers.
- USB host port for the connection of flash drives. Flash drives can be used for upgrading applications and firmware.
- Optional plug-in modules for fieldbus systems and networks. Compatible with TCM and SCM modules.
- Dual-driver communication capability.
- Vector graphic capabilities including the support of multiple layers and object transparency.
- Data display in numerical, text, bargraph, analog gauges and graphic image formats. Dynamic object properties supported.
- Data acquisition and trend presentation. Trend data can be transferred to a host computer using the Ethernet connection.
- Recipe data storage. Recipe data can be transferred to a host computer
- Ethernet connection or copied to flash drives via USB connection.
- Multilanguage applications. Far East languages are supported. The number of runtime languages is limited only by the available memory. All text information in the application can be exported to files in Unicode format for easier translation.
- Powerful macro editor to configure touchscreen operation
- Alarms and historical alarm list. Alarm and event information can be printed or transferred to a host computer.
- Eight level password protection.
- Report printing to serial printer. Reports are freely configurable using Designer.
- Ethernet-based UniNet network to share data between UniOP HMIs and to serve data using UniNet OPC Server.

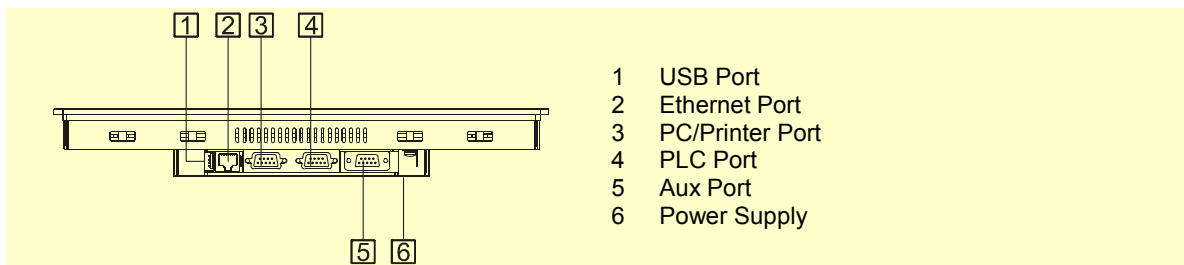
Technical Data

Display		Password	Yes
Type	TFT	Hardware Real Time Clock	Yes, with battery back-up
Resolution	1280x800, WXGA	Screen saver	Yes
Active display area	13.3" diagonal	Buzzer	Yes, audible feedback for touchscreen
Colors	64K	Ratings	
Backlight	LED	Power supply voltage	24 Vdc (18 to 30 Vdc)
Brightness	250 Cd/m ² typ.	Current consumption	0.6 A at 24 Vdc(max.)
Dimming	Yes	Fuse	Automatic
Memory		Weight	Approx 2.5 Kg
User memory	64 MB internal Flash	Battery	Rechargeable Lithium battery, not user-replaceable
Front panel		Environmental Conditions	
Touchscreen	Analog resistive	Operating temperature	0 to 50 °C
User LED indicators	1	Storage temperature	-20 to +70 °C
System LED indicators	4	Operating and storage humidity	5 – 85 % relative humidity, non-condensing
Interfaces		Protection class	IP65 (front panel) IP20 (rear)
Ethernet port	10/100 Mbit	Dimensions	
USB port	Host interface, version 1.1	Faceplate LxH	337x267 mm
PC/Printer port	RS-232, RS-485, RS-422, software configurable	Cutout AxB	326x256 mm
PLC port	RS-232, RS-485, RS-422, software configurable	Depth D+T	42mm+4mm
Aux port	Yes, fieldbus and controller modules	Approvals	
Functionality		CE	Emission EN 61000-6-4 Immunity EN 61000-6-2 for installation in industrial environments
Vector graphics	Yes	UL	UL508 Listed
Object dynamics (hide/show)	Yes		
TrueType fonts	Yes		
Dual driver capability	Yes		
Video input	No		
Data acquisition and trends	Yes		
Multilanguage	Yes, number of run-time languages limited only by available memory		
Recipe memory	Yes. Flash memory storage limited only by available memory		
UniNet network	Client/Server		
Alarms	1024		
Event list	1024		

Dimensions



Connections



Ordering Information

Model	Part Number	Description
eTOP313	ETOP313U101	13.3" TFT color touchscreen with Ethernet and USB interfaces. White front panel.
	ETOP313U201	13.3" TFT color touchscreen with Ethernet and USB interfaces. Silver front panel.
	ETOP313U301	13.3" TFT color touchscreen with Ethernet and USB interfaces. Black front panel.
PROT-15		Disposable protection foil for 12.1" and 13.3" eTOP touch panels (10 pieces).
PROT-21		Disposable protection foil for 12.1" and 13.3" eTOP touch panels (10 pieces). UV resistant.

ptn0321

Ver. 1.6

Copyright © 2010-2014 Exor International S.p.A. – Verona, Italy

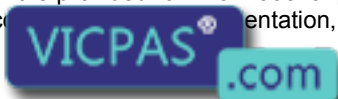
Subject to change without notice.

The information contained in this document is provided for informational purposes only. While efforts were made to verify the accuracy of the information contained herein, it is provided "as is" without warranty of any kind.

www.uniop.com

ptn0321-6.doc - 17.02.2014

UniOP eTOP313



Everything for your HMI running

✉ sales@vicpas.com

☎ +86-15876525394