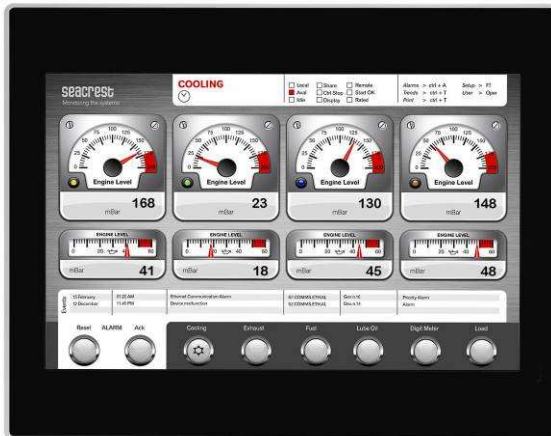


# UniOP eTOP413

The UniOP eTOP Series 400 HMI products combine state-of-the-art features and top performance with an outstanding design. They are the ideal choice for all demanding HMI applications including factory and building automation.

The eTOP413 features an industry standard 13.3" TFT display with WXGA resolution and full vector graphic capabilities. The JMobile software offers full vector graphic capabilities and plenty of connectivity options.



- 13.3" TFT color display, CCFL backlight
- 1280x800 pixel (WXGA) resolution, 64K colors
- Advanced vector graphics
- Resistive touchscreen
- 64 MB user memory
- 10/100 Ethernet interface
- USB interface
- Connection to bus systems using optional plug-in modules
- Slim design. Mounting depth less than 50mm
- JMobile runtime included

## Highlights

The eTOP Series 400 HMI panels have been designed to run the JMobile software.

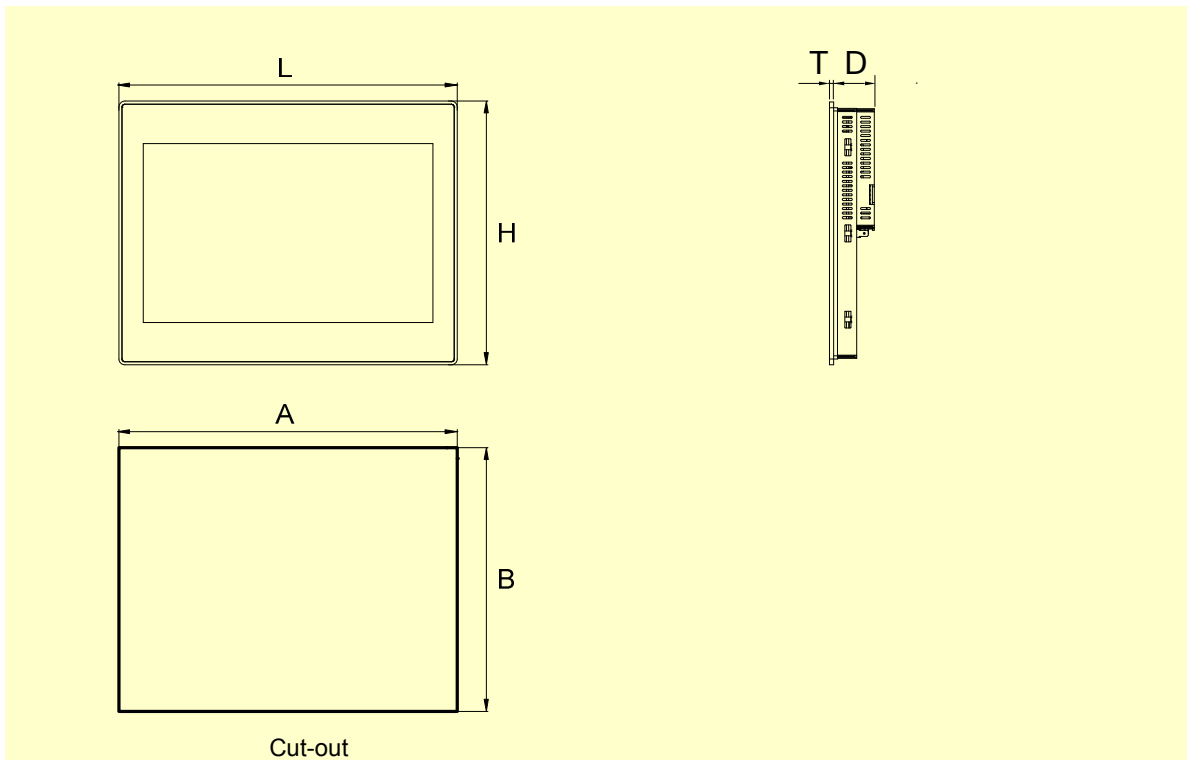
- JMobile runtime included. Full compatibility with JMobile Studio.
- Full vector graphic support. Native support of SVG graphic objects. Transparency and alpha blending.
- Full object dynamics: control visibility and transparency, move, resize, rotate any object on screen. Change properties of basic and complex objects.
- TrueType fonts
- Multilanguage applications. Easily create and manage your applications in multiple languages to meet global requirements. Far East languages are supported. Tools available in JMobile Studio support easy third-party translations and help reducing development and maintenance costs of the application
- Data display in numerical, text, bargraph, analog gauges and graphic image formats.
- Rich set of state-of-the-art HMI features: data acquisition, alarm handling, scheduler and timed actions (daily and weekly schedulers, exception dates)
- recipes, users and passwords, e-mail and RSS feeds, rotating menus
- Includes support for a wide range of communication drivers for Factory and Building Automation systems.
- Multiple drivers communication capability.
- Remote monitoring and control. Client-Server functionality. Mobile clients supported.
- Off-line and On-line simulation with JMobile Studio.
- Powerful scripting language for automating HMI applications. Script debugging improves efficiency in application development.
- Rich gallery of symbols and objects
- Project & page templates
- Optional plug-in modules for fieldbus systems, networks and controllers. Compatible with TCM and SCM modules.



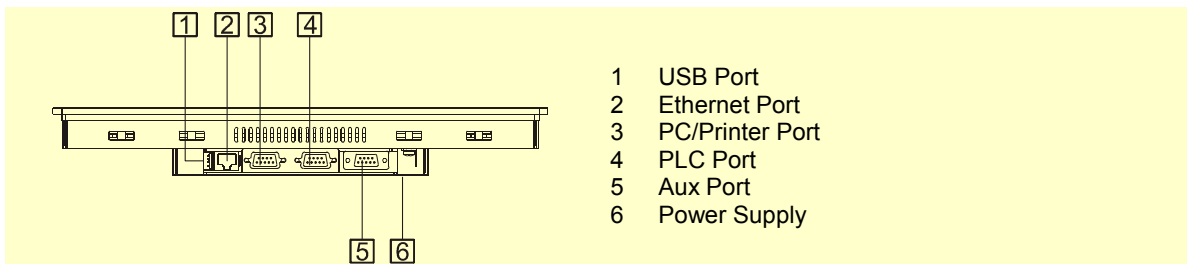
## Technical Data

<b>Display</b> Type Resolution Active display area Colors Backlight Brightness Dimming	TFT 1280x800, WXGA 13.3" diagonal 64K CCFL 250 Cd/m <sup>2</sup> typ. Yes	Hardware Real Time Clock Screen saver Buzzer	Yes, with battery back-up Yes Yes, audible feedback for touchscreen
<b>System Resources</b> Operating System User memory RAM	Windows Embedded CE 6.0 128 MB Flash 256 MB DDR2	<b>Ratings</b> Power supply voltage Current consumption Fuse Weight Battery	24 Vdc (18 to 30 Vdc) 1.1 A at 24 Vdc(max.) Automatic Approx 2.8 Kg Rechargeable Lithium battery, not user-replaceable
<b>Operator Interface</b> Touchscreen User LED indicators System LED indicators	Analog resistive 1 4	<b>Environmental Conditions</b> Operating temperature Storage temperature Operating and storage humidity Protection class	0 to 50 °C (vertical installationmounting) -20 to +70 °C 5 – 85 % relative humidity, non-condensing IP66 (front panel) IP20 (rear)
<b>Interfaces</b> Ethernet port USB port Serial Port 1 Serial Port 2 Aux port	10/100 Mbit Host interface, version 2.0 RS-232, RS-485, RS-422, software configurable RS-232, RS-485, RS-422, software configurable Yes, optional fieldbus and controller modules	<b>Dimensions</b> Faceplate LxH Cutout AxB Depth D+T	337x267 mm 326x256 mm 42mm+4mm
<b>Functionality</b> Vector graphics Object dynamics TrueType fonts Multiple driver communication Data acquisition and trend presentation Multilanguage Recipes Alarms Historical event list Users and passwords	Yes, includes SVG support Yes. Visibility, position, size, rotation for most object types. Yes Yes, max 2 drivers Yes. Flash memory storage limited only by available memory Yes, with runtime language switching. Yes. Flash memory storage limited only by available memory Yes Yes Yes	<b>Approvals</b> CE UL	Emission EN 61000-6-4 Immunity EN 61000-6-2 for installation in industrial environments UL508 Listed

**Dimensions**



**Connections**



**Ordering Information**

<b>Model</b>	<b>Part Number</b>	<b>Description</b>
eTOP413-White	ETOP413U101	13.3" TFT color touchscreen with Ethernet and USB interfaces. White front panel. JMobile run-time.
eTOP413-Grey	ETOP413U201	13.3" TFT color touchscreen with Ethernet and USB interfaces. Grey front panel. JMobile run-time.
eTOP413-Black	ETOP413U301	13.3" TFT color touchscreen with Ethernet and USB interfaces. Black front panel. JMobile run-time.
PROT-15		Disposable protection foil for 12.1" and 13.3" eTOP touch panels (10 pieces).
PROT-21		Disposable protection foil for 12.1" and 13.3" eTOP touch panels (10 pieces). UV resistant.

ptn0322

Ver. 1.4

Copyright © 2010-2012 Exor International S.p.A. – Verona, Italy

Subject to change without notice

The information contained in this document is provided for informational purposes only. While efforts were made to verify the accuracy of the information contained in this documentation, it is provided "as is" without warranty of any kind.

[www.uniop.com](http://www.uniop.com)ptn0322-4.doc - 19.09.2012  
UniOP eTOP413