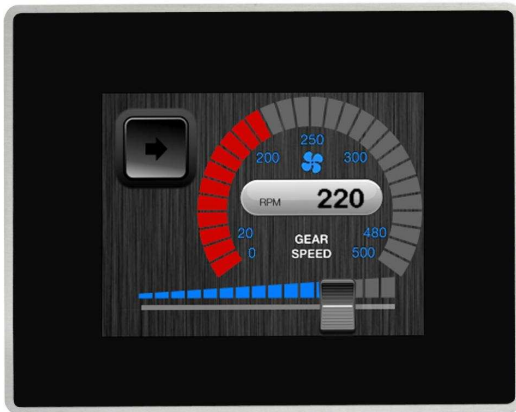


UniOP eTOP406

The UniOP eTOP Series 400 HMI products combine state-of-the-art features and top performance with an outstanding design. They are the ideal choice for all demanding HMI applications including factory and building automation. The eTOP406 features a bright 5.7" TFT display with LED backlight. The JMobile software offers full vector graphic capabilities and plenty of connectivity options.



- 5.7" TFT color display, LED backlight
- 320x240 pixel (QVGA) resolution, 64K colors
- Advanced vector graphics and client-server connectivity powered by JMobile
- Resistive touchscreen
- 10/100 Ethernet interface
- USB interface
- Connection to bus systems using optional plug-in modules
- Slim design. Mounting depth less than 50mm

Highlights

The eTOP Series 400 HMI panels have been designed to run the JMobile software.

- JMobile runtime included. Full compatibility with JMobile Studio.
- Full vector graphic support. Native support of SVG graphic objects. Transparency and alpha blending.
- Full object dynamics: control visibility and transparency, move, resize, rotate any object on screen. Change properties of basic and complex objects.
- TrueType fonts
- Multilanguage applications. Easily create and manage your applications in multiple languages to meet global requirements. Far East languages are supported. Tools available in JMobile Studio support easy third-party translations and help reducing development and maintenance costs of the application
- Data display in numerical, text, bargraph, analog gauges and graphic image formats.
- Rich set of state-of-the-art HMI features: data acquisition, alarm handling, scheduler and timed actions (daily and weekly schedulers, exception dates), recipes, users and passwords, e-mail and RSS feeds, rotating menus
- Includes support for a wide range of communication drivers for Factory and Building Automation systems.
- Multiple drivers communication capability.
- Remote monitoring and control. Client-Server functionality. Mobile clients supported.
- Off-line and On-line simulation with JMobile Studio.
- Powerful scripting language for automating HMI applications. Script debugging improves efficiency in application development.
- Rich gallery of symbols and objects
- Project templates
- Optional plug-in modules for fieldbus systems, networks and controllers. Compatible with TCM and SCM modules.



Everything for your HMI running

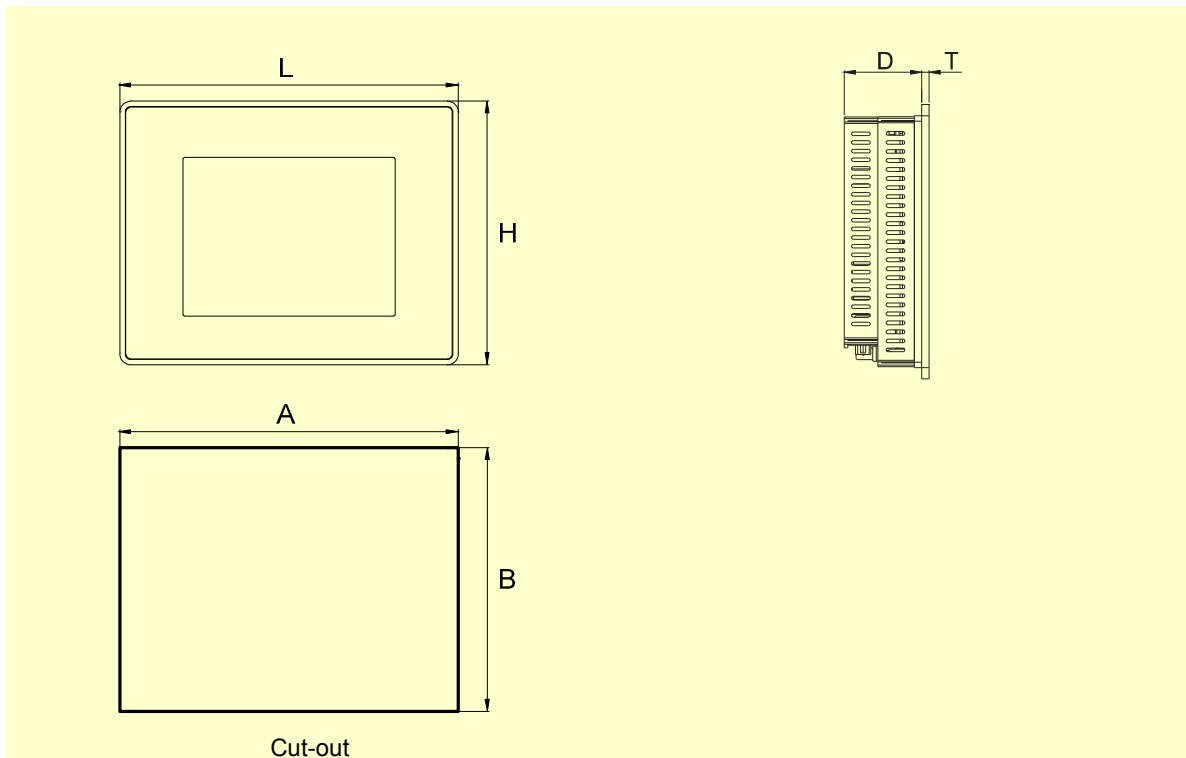
✉ sales@vicpas.com

☎ +86-15876525394

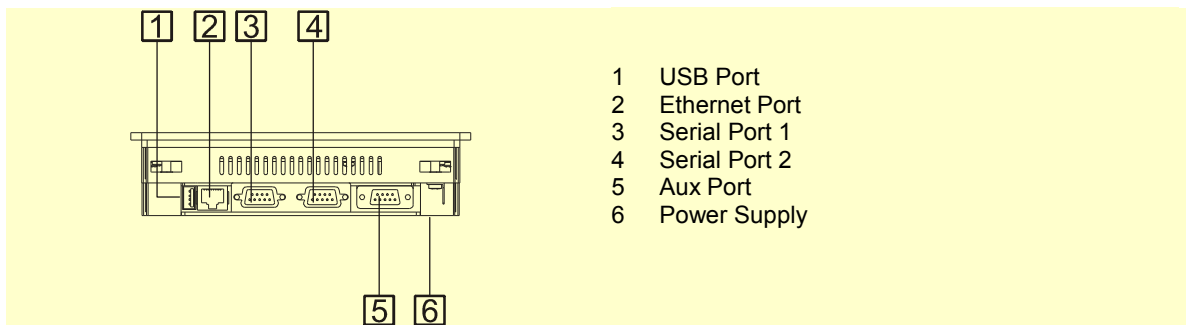
Technical Data

Display Type Resolution Active display area Colors Backlight Brightness Dimming	TFT 320x240, QVGA 5.7" diagonal 64K LED 130 Cd/m ² typ. Yes	Hardware Real Time Clock Screen saver Buzzer	Yes, with battery back-up Yes Yes, audible feedback for touchscreen
System Resources Operating System User memory RAM	Microsoft Windows CE 6.0 128 MB Flash 256 MB DDR	Ratings Power supply voltage Current consumption Fuse Weight Battery	24 Vdc (18 to 30 Vdc) 0.65A at 24Vdc(max.) Automatic Approx 1.0 Kg Rechargeable Lithium battery, not user-replaceable
Operator Interface Touchscreen User LED indicators System LED indicators	Analog resistive 1 4	Environmental Conditions Operating temperature Storage temperature Operating and storage humidity Protection class	0 to 50 °C (vertical installationmounting) -20 to +70 °C 5 – 85 % relative humidity, non-condensing IP66 (front panel) IP20 (rear)
Interfaces Ethernet port USB port Serial Port 1 Serial Port 2 Aux port	10/100 Mbit Host interface, version 2.0 RS-232, RS-485, RS-422, software configurable RS-232, RS-485, RS-422, software configurable Yes, optional fieldbus and controller modules	Dimensions Faceplate LxH Cutout AxB Depth D+T	187x147 mm (7.36x5.79") 176x136 mm (6.93x5.35") 45+4 mm (1.77+0.16")
Functionality Vector graphics Object dynamics TrueType fonts Multiple driver communication Data acquisition and trend presentation Multilanguage Recipes Alarms Historical event list Users and passwords	Yes, includes SVG support Yes. Visibility, position, size, rotation for most object types. Yes Yes, max 2 drivers Yes. Flash memory storage limited only by available memory Yes, with runtime language switching. Yes. Flash memory storage limited only by available memory Yes Yes Yes	Approvals CE UL	Emission EN 61000-6-4 Immunity EN 61000-6-2 for installation in industrial environments UL508 Listed

Dimensions



Connections



Ordering Information

Model	Part Number	Description
eTOP406-White	ETOP406U101	5.7" TFT color touchscreen with Ethernet and USB interfaces. White front panel. JMobile run-time.
eTOP406-Grey	ETOP406U201	5.7" TFT color touchscreen with Ethernet and USB interfaces. Grey front panel. JMobile run-time.
eTOP406-Black	ETOP406U301	5.7" TFT color touchscreen with Ethernet and USB interfaces. Black front panel. JMobile run-time.
PROT-12	R-PROT12	Disposable protection foil for 5.7" and 7" eTOP touch panels (10 pieces).
PROT-18	R-PROT18	Disposable protection foil for 5.7" and 7" eTOP touch panels (10 pieces). UV resistant.

ptn309

Ver. 1.4

Copyright © 2010-2012 Exor International S.p.A. – Verona, Italy

Subject to change without notice

The information contained in this document is provided for informational purposes only. While efforts were made to verify the accuracy of the information contained in this documentation, it is provided "as is" without warranty of any kind.

www.uniop.com

ptn0309-4.doc - 19.09.2012
UniOP eTOP406

