

Rubber sole injection molding machine

Keywords:

Rubber sole injection molding machine price
Rubber sole injection molding machine factory
Automatic rubber sole injection molding machine
Rubber sole injection molding machine for safety shoe sole
Rubber sole injection molding machine for sports shoe
Rubber shoe sole molding machine with European engineering

Product attributes:

Condition: New
Place of Origin: Zhejiang, China (Mainland)
Oil tank capacity: 600 L
Max Injection Volume: 1000 ml
Heating Plate Dimension: 300×375 mm
System pressure: 21 Mpa
Power: 90 kw
Dimension (L×W×H): 3550×2020×(3200-3450) mm
Weight: 10.5 Ton
Certification: CE
Factory or not: Factory
Engineers: Portugal team
Original from Europe

Pictures:



Brief description:

This is full automatic injection machine, for single or multi-color rubber shoe sole, SBR shoe sole, NR shoe sole, with high quality and productivity.

Automatic mold into/out and open the mold
Automatic exhaust
Automatic weighing, injecting rubber into mold cavity
Automatic feeding rubber, plasticizing preheating

Product details:

LRS165 Lary rubber sole injection molding machine (Two Stations)

Description:

	Single color rubber injection		LRS165
1.	Clamping force	KN	1650
2.	No. of working station	Station	2
3.	System pressure	Mpa	21
4.	Injection pressure	Mpa	198
5.	Opening/Clamping stroke	mm	300
6.	Heating plate dimensions	mm	300×375
7.	Daylight between heating plates	mm	230~480
8.	Max Injection volume	Cm ³	1000
9.	Max. Width of feeding rubber strip	mm	45
10.	Max. Thickness of feeding rubber strip	mm	8
11.	Max. Temperature for heating plate	°C	250
12.	Max. Temperature for barrel	°C	80
13.	Heating power	KW	18*2
14.	Total power	KW	90
15.	Oil tank capacity	L	600
16.	Machine dimensions(L×W×H mm)	mm	3550×2020×(3200-3450)
17.	Machine Weight	Ton	10.5

Features:

Meet the high request of rubber shoe soles

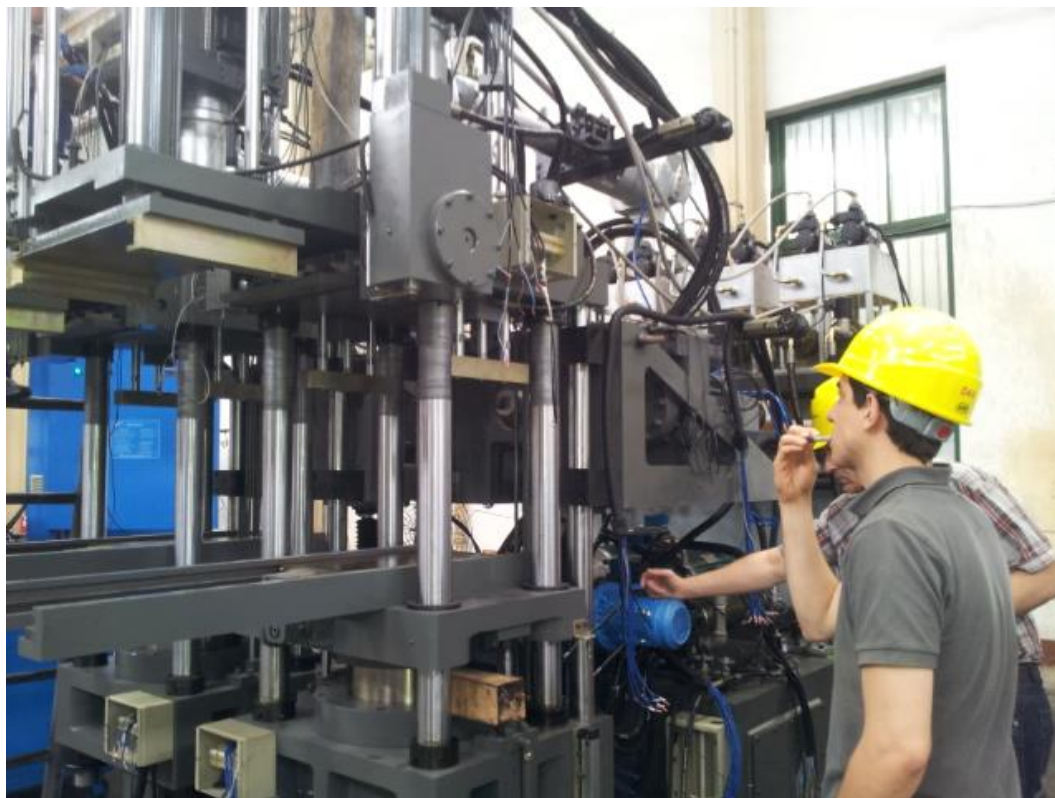
Each Worker can operate 4-8 Stations (2-4 Machines)

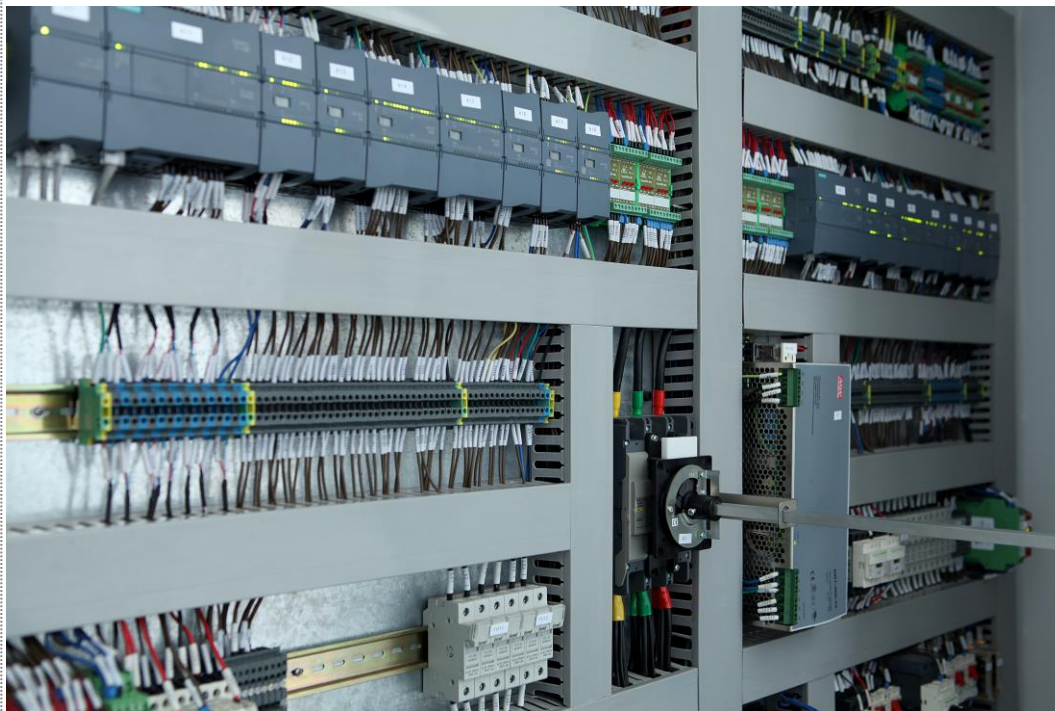
Each Station can produce 20-40 pairs of shoe soles per hour

- Increasing product quality
- Improving global productivity
- Reducing labor costs
- Achieve zero defects of product design before production
- Increasing number of shoe models available for market research

- Optimizing quality geometry for the prototyping and production phases
- Simplifying y and optimizing mold production
- Implementation the latest and efficient technologies for mold production
- Integration of the most advanced injection equipment for shoe production

Pictures:





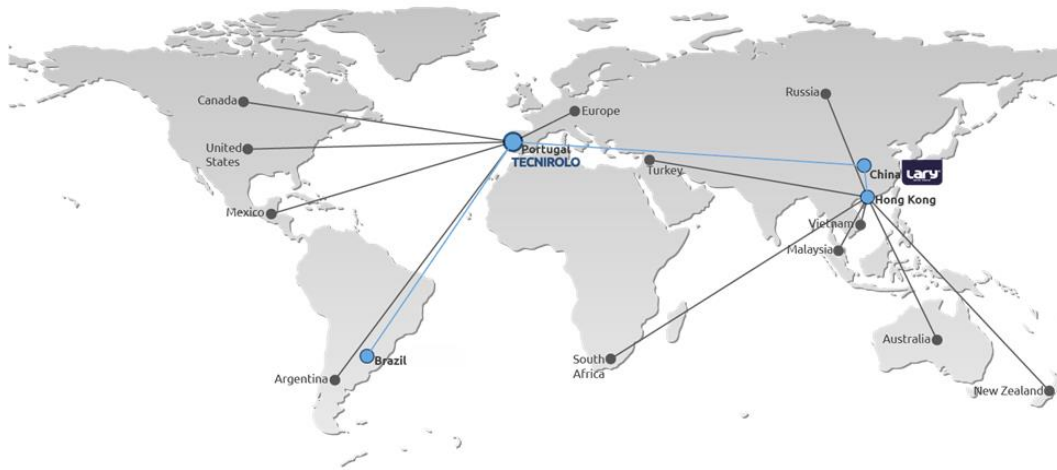




Company:

Ningbo Lary Industry Technology Co., Ltd is a joint venture with Portugal TECNIROLO Engenharia Industrial S.A. Lary is an engineering & manufacturing enterprise which inherits the concept of providing customers with best services in Europe for more than twenty years. Lary has committed to product promotion and service of shoe industry technology with Portugal TECNIROLO. Now, Lary's current products include:

rubber shoe sole injection mold machine, high precision & speed rubber injection machine, 3D scanner for shoe last, 3D shoe design software and 3D printer. TecniRolo - Portugal and Lary Industry - China are a group of companies that work as a global solution provider for an international network over of 16 countries.



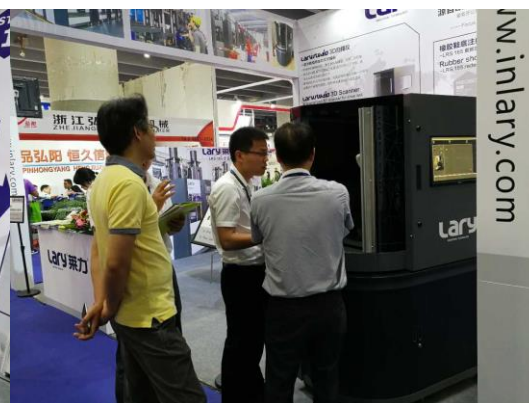
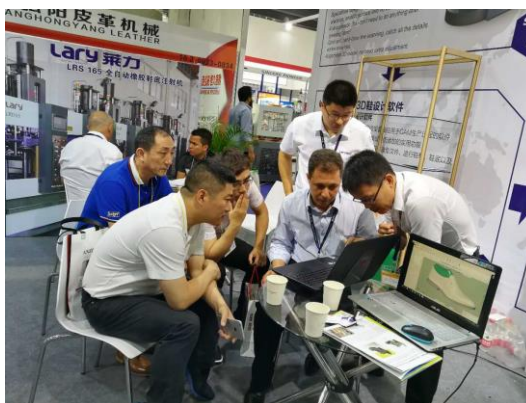
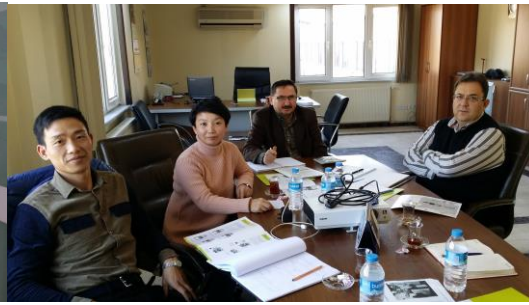




Certification:



Customers & exhibitions:



Grendene

Grendene, 成立于1971年,是世界上最大的鞋类生产商之一。独家专有的鞋类生产技术让他们在全世界的女鞋和童鞋市场占有一席之地。Grendene旗下有许多著名的品牌,包括Melissa (梅丽莎果冻鞋), Grendha, Zaxy, Rider, Cartago, Ipanema, Pega Forte, Grendene Kids和Zizou等。

Grendene, founded in 1971, is one of the world's largest producers of footwear. It has exclusive proprietary technologies in the production of footwear for the women's, men's and children's markets. It owns successful, widely-known brands, including Melissa, Grendha, Zaxy, Rider, Cartago, Ipanema, Pega Forte, Grendene Kids and Zizou.



Bolflex

BOLFLEX公司是欧洲鞋类组件供应市场的领导者, 专注于鞋类零部件生产已有二十余年, 尤其精通是橡胶鞋底生产, 自1992年起, 用最丰富的行业知识和经验, 以及最先进的设备, 为多个欧洲知名鞋品牌提供最优质的橡胶鞋底。

BOLFLEX is a market leader company, expert in the footwear components sector, with consolidated skills and credit in the production and supply of soles for the European footwear industry. The project began in 1992. ... With its know-how, its experience and modern machinery, the main focus is in the production of rubber soles.



Team:



Payments and Delivering:

Payments: 40% deposit by T/T after confirming the drawings and 60% balance by T/T before delivery.

Delivering: 90 -120 days after we confirmed both side.

Contact us

Amy Ren

Ningbo Lary Industry Technology Co., Ltd.

Ningbo

Add: No.9 East of Jingu middle Road, Yinzhou District, Ningbo City, China

Web: www.larytec.com www.nbmech.com

Tel: 0086-754-88033926

Fax: 0086-754-88137126

Mob: 0086-13958255267

Email: amy@larytec.com inlary@larytec.com

Welcome to visit us!