



MULTI-FUNCTION PIPE BENDER
MODEL: HHW-76B

Bending and Forming

Manual Pipe Bender

HHW-25S



Product Description

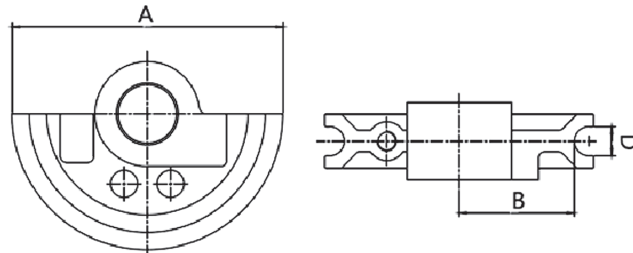
- HHW-25S is a portable pipe bending tool set with cold bending.
- Clean, smooth bending arc for use. Quick bending for U type.
- Strong plastic carry case and dies are included as standard accessories.
- Mounts easily to your workbench. Simple operation and fast setup.
- It is widely used in factories and mines, village ,construction , electrical circuit ,pipe setting.
- Suitable for mild steel tubes and stainless steel pipes, up to 180°

Ordering Information

| Catalog No. | Model No. | Bending Range | Description | N.W(kg) | Packing Size |
|-------------|-----------|---------------|-------------------------------------|---------|--------------|
| 2551010 | HHW-25S | Φ10-25mm | 3/8",1/2",9/16", 5/8",3/4"7/8"1" | 25 | 66×46×18cm |



Bending Dies specification



| Bending Shoe Size | A (mm) | B (mm) | D (mm) | Wall Thickness | |
|-------------------|--------|--------|--------|---------------------|-------------------|
| | | | | Steel/ SS pipe (mm) | Copper tubes (mm) |
| 3/8" | 100 | 42 | 11 | 0.8 | 1.0 |
| 1/2" | 119 | 50.5 | 13 | 1.0 | 1.2 |
| 9/16" | 139 | 55.5 | 15 | 1.0 | 1.2 |
| 5/8" | 159 | 68.5 | 17 | 1.0 | 1.2 |
| 3/4" | 179 | 77 | 20 | 1.0 | 1.2 |
| 7/8" | 225 | 98.5 | 23 | 1.2 | 1.5 |
| 1" | 225 | 97 | 26 | 2.0 | 1.6 |

Manual Pipe Bender



HHW-22



HHW-22A



Product Description

- Designed to bend soft copper and coated soft copper of 6-22mm as well as multi-layer pipes up to 26mm.
- For sanitary, heating, air conditioning, refrigerating and hydraulic field.
- Also for DIN EN 1057 and tubes of press fitting systems.
- No costs for fittings, storage, procurement. Savings in soldering joints, pressing joints and working hours.
- Suitable for cold bending of soft copper tubes, coated copper tubes, multi-layer composite tubes, up to 90°

Specifications

- **Model:** HHW-22
- **Bending range:** 6-22mm
- **Bending dies:** 1/4", 5/16", 3/8", 1/2", 5/8", 3/4", 7/8"
- **Wall thickness of pipe:** 1mm
- **Dimension:** 52×31×9cm

Specifications

- **Model:** HHW-22A
- **Bending range:** 6-22mm
- **Bending dies:** 1/4", 5/16", 3/8", 1/2", 5/8", 3/4", 7/8"
- **Wall thickness of pipe:** 1mm
- **Dimension:** 52×31×9cm

Ordering Information

| Catalog No. | Description | N.W(kg) |
|-------------|------------------------------------|---------|
| 2551110 | HHW-22 complete set with all dies | 4.1 |
| 2551210 | HHW-22A complete set with all dies | 5.1 |

BENDING AND FORMING

Air Hydraulic Pipe Benders

HHW-2Q & HHW-3Q



HHW-4Q

Product Description

- Benders can be operated by air compressor or by hand.
- High efficiency working with air compressor.
- Cold bending pipes only in one turn, Hydraulic equipment makes more precise bending.
- Fast and easy setup, simple to use.
- Packing in a plywood case with a set of Bending Dies and service pack.
- Suitable for cold bending of thick-walled pipes(gas, water and steam pipes, non-heated black iron pipes, galvanized pipes), up to 90°

Ordering Information

| Catalog No. | Model No. | Description |
|-------------|-----------|------------------------------------|
| 2531010 | HHW-2Q | Air Hydraulic bender with all dies |
| 2531110 | HHW-3Q | Air Hydraulic bender with all dies |
| 2531210 | HHW-4Q | Air Hydraulic bender with all dies |
| 2531310 | HHW-12Q | Air Hydraulic bender with all dies |
| 2531410 | HHW-16Q | Air Hydraulic bender with all dies |



HHW-12Q & HHW-16Q

Specification

| Model No. | Max pressure | Max stroke | Air pressure | Bending dies | G. W. | Dimension | Packing way |
|-----------|--------------|------------|--------------|--|---------|-------------|-------------|
| HHW-2Q | 13T | 250mm | 8kg/120psi | 1/2",3/4",1",1 1/4",1 1/2",2" | 106.1kg | 73×32×20cm | Plywood |
| HHW-3Q | 20T | 290mm | 8kg/120psi | 1/2",3/4",1",1 1/4",1 1/2",2",2 1/2",3" | 109kg | 94×40×23cm | |
| HHW-4Q | 20T | 370mm | 8kg/120psi | 1/2",3/4",1",1 1/4",1 1/2",2",2 1/2",3",4" | 158kg | 118×46×25cm | |
| HHW-12Q | 12T | 210mm | 8kg/120psi | 1/2",3/4",1",1 1/4",1 1/2",2" | 43.9kg | 63×25×50cm | |
| HHW-16Q | 16T | 240mm | 8kg/120psi | 1/2",3/4",1",1 1/4",1 1/2",2",2 1/2",3" | 70kg | 70×63×21cm | |

* See page113 For Bending Dies specification

Manual Hydraulic Pipe Bender

HHW-2



Product Description

- Hydraulic pipe benders provide easier bending than manual mechanical benders.
- Bending range up to 4", portable design for construction.
- Cold bending pipes only in one turn. Up to 90 degree, hydraulic equipment makes more precise bending.
- Fast setup and disassembly, convenient removing with bottom wheels.
- Friendly use for European Environmental Standard with CE.
- Suitable for cold bending of thick-walled pipes(gas,water and steam pipes, non-heated black iron pipes, galvanized pipes), up to 90°

Ordering Information

| Catalog No. | Description |
|-------------|-----------------------------------|
| 2511810 | HHW-1A complete set with all dies |
| 2511510 | HHW-2 complete set with all dies |
| 2511610 | HHW-3 complete set with all dies |
| 2511710 | HHW-4 complete set with all dies |



HHW-2/3/4 packing

Specifications

| Model No. | Max pressure | Max stroke | Bending dies | Pipe wall thickness | G. W. | Dimension | Packing way |
|-----------|--------------|------------|--|---------------------|-------|-------------|-------------|
| HHW-1A | 6T | 150mm | 3/8", 1/2", 3/4", 1" | 1.5-3.5mm | 17kg | 43×38×13cm | Metal case |
| HHW-2 | 13T | 250mm | 1/2", 3/4", 1", 1 1/4", 1 1/2", 2" | 2.75-4.5mm | 49kg | 73×32×20cm | Plywood |
| HHW-3 | 20T | 290mm | 1/2", 3/4", 1", 1 1/4", 1 1/2", 2", 2 1/2", 3" | 2.75-5mm | 98kg | 93×40×21kg | |
| HHW-4 | 23T | 370mm | 1/2", 3/4", 1", 1 1/4", 1 1/2", 2", 2 1/2", 3", 4" | 2.75-6mm | 149kg | 118×46×23cm | |

* See page113 For Bending Dies specification

BENDING AND FORMING

Manual Hydraulic Pipe Bender



HHW-4J



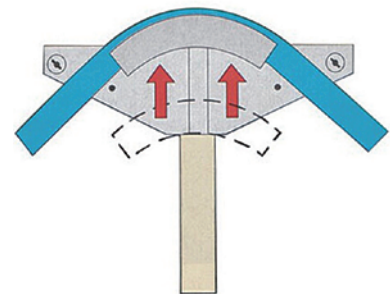
operation display

Product Description

- Simple manual hydraulic operation for easy use.
- Completely manual hydraulic operation so external power is not needed.
- Heavy-duty hydraulic cylinder capable of bending schedule 40 pipe.
- Cold bending pipes only in one turn. Up to 90 degree, hydraulic equipment makes more precise bending.
- Pipe stands are also included for better bending experience.
- Suitable for cold bending of thick-walled pipes(gas,water and steam pipes, non-heated black iron pipes, galvanized pipes), up to 90°

Ordering Information

| Catalog No. | Description |
|-------------|-----------------------------------|
| 2511010 | HHW-2J complete set with all dies |
| 2511110 | HHW-3J complete set with all dies |
| 2511210 | HHW-4J complete set with all dies |



Bending illustration

Specifications

| Model No. | Max | Max stroke | Bending dies | Pipe wall thickness | G. W. | Dimension | Packing way |
|-----------|-----|------------|--|---------------------|-------|-------------|-------------|
| HHW-2J | 13T | 250mm | 1/2", 3/4", 1", 1 1/4", 1 1/2", 2" | 2.75-4.5mm | 53kg | 73×32×20cm | Plywood |
| HHW-3J | 20T | 290mm | 1/2", 3/4", 1", 1 1/4", 1 1/2", 2", 2 1/2", 3" | 2.75-5mm | 105kg | 94×40×21cm | |
| HHW-4J | 23T | 370mm | 1/2", 3/4", 1", 1 1/4", 1 1/2", 2", 2 1/2", 3", 4" | 2.75-6mm | 155kg | 118×46×23cm | |

* See page113 For Bending Dies specification

Electric Hydraulic Pipe Bender

HHW-2D



Product Description

- Electric hydraulic bender up to 4" pipe.
- Using range: applicable to general pipe, conductor pipe, gas pipe, the thick steel pipe, etc. , bending angle up to 90 degree.
- All bending dies are made of cast iron than ordinary grey cast iron. With high strength, good toughness and plasticity, more resistant to use, not easy to break.
- Fast setup and disassembly, convenient removing with bottom wheels.
- Stands are optional instead of bottom wheels.
- Equipped with HL-630A one-way pumps for single-acting applications.
- Suitable for cold bending of thick-walled pipes(gas,water and steam pipes, non-heated black iron pipes, galvanized pipes), up to 90°

Ordering Information

| Catalog No. | Description |
|-------------|---|
| 2521010 | HHW-2D complete set with all dies, wheels, 110V/60Hz |
| 2521110 | HHW-3D complete set with all dies, wheels , 110V/60Hz |
| 2521210 | HHW-4D complete set with all dies, wheels , 110V/60Hz |
| 2521011 | HHW-2D complete set with all dies, wheels, 220V/50Hz |
| 2521111 | HHW-3D complete set with all dies, wheels, 220V/50Hz |
| 2521211 | HHW-4D complete set with all dies, wheels, 220V/50Hz |



optional tripod stand

Specifications

| Model No. | Max pressure | Max stroke | Pump | Bending dies | Pipe wall thickness | G. W. | Dimension | Packing way |
|-----------|--------------|------------|------|--|---------------------|-------|-------------|-------------|
| HHW-2D | 13T | 250mm | 750W | 1/2", 3/4", 1", 1 1/4", 1 1/2", 2" | 2.75-4.5mm | 74kg | 96×35×27cm | Plywood |
| HHW-3D | 20T | 290mm | 750W | 1/2", 3/4", 1", 1 1/4", 1 1/2", 2", 2 1/2", 3" | 2.75-5mm | 126kg | 118×46×27cm | |
| HHW-4D | 23T | 370mm | 750W | 1/2", 3/4", 1", 1 1/4", 1 1/2", 2", 2 1/2", 3", 4" | 2.75-6mm | 174kg | 118×46×32cm | |

* See page113 For Bending Dies specification

BENDING AND FORMING

Separable Hydraulic Pipe Bender

HHW-4F



Product Description

- Can precisely bend diameter 1/2"-4" pipes.
- Includes standard bending dies, tripod stands and 1.8m high pressure oil hose hand pump.
- Separable type, more flexible to operate.
- All parts and machine will be put in a plywood case.
- Suitable for cold bending of thick-walled pipes(gas,water and steam pipes, non-heated black iron pipes, galvanized pipes), up to 90°

Ordering Information

| Catalog No. | Description |
|-------------|-----------------------------------|
| 2541010 | HHW-2F complete set with all dies |
| 2541110 | HHW-3F complete set with all dies |
| 2541210 | HHW-4F complete set with all dies |

Specifications

| Model No. | Max | Max stroke | Bending dies | Pipe wall thickness | G. W. | Dimension | Packing way |
|-----------|-----|------------|--|---------------------|-------|-------------|-------------|
| HHW-2F | 13T | 250mm | 1/2", 3/4", 1", 1 1/4", 1 1/2", 2" | 2.75-4.5mm | 50kg | 73×32×20cm | Plywood |
| HHW-3F | 20T | 320mm | 1/2", 3/4", 1", 1 1/4", 1 1/2", 2", 2 1/2", 3" | 2.75-5mm | 112kg | 94×40×21cm | |
| HHW-4F | 23T | 370mm | 1/2", 3/4", 1", 1 1/4", 1 1/2", 2", 2 1/2", 3", 4" | 2.75-6mm | 157kg | 118×46×23cm | |

* See page113 For Bending Dies specification

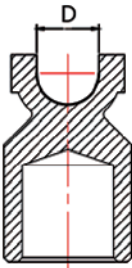
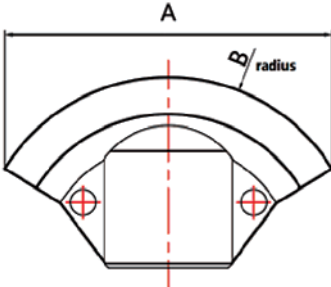
Bending Dies



Product Description

- Following GB/T 3091, DIN 2440, EN 10255 Made of nodular cast iron.

Bending Dies specification



| Bending Shoe Size (Inch) | A (mm) | B (mm) | Minimum Bend Radius(mm) | D (mm) | Pipe Schedule | Wall thickness (mm) |
|--------------------------|--------|--------|-------------------------|--------|---------------|---------------------|
| 1/2" | 115 | 67.5 | 50.2 | 22 | 40 | 2.8 |
| | | | | | 80 | 3.7 |
| 3/4" | 131 | 84.5 | 66 | 28 | 40 | 2.9 |
| | | | | | 80 | 3.9 |
| 1" | 147 | 96.5 | 75.4 | 34 | 40 | 3.4 |
| | | | | | 80 | 4.5 |
| 1 1/4" | 195 | 134 | 108.7 | 43 | 40 | 3.6 |
| 1 1/2" | 242 | 162 | 133.5 | 50 | 40 | 3.7 |
| 2" | 297 | 238 | 199.2 | 62 | 40 | 3.9 |
| 2 1/2" | 380 | 257 | 209 | 79 | 40 | 5.2 |
| 3" | 436 | 390 | 335 | 90 | 40 | 5.5 |
| 4" | 555 | 450 | 400 | 110 | 40 | 6 |

BENDING AND FORMING

Rolling Pipe Bender

HHW-G76

Product Description

- If you want to bend pipes into a circular or arc shape, the diameter of the circle or arc should be more than twenty times of the pipe diameter.
- We can supply bending dies in other Specifications according to your requirements.
- Suitable for cold bending of stainless steel round/square pipe, mild steel round/square pipe, up to 360°
- The machine is suitable to bend pipes which length is not less than 2m

Specifications

- Model: HHW-G76
- Standard round dies: 16, 19, 22, 25, 32, 38, 51, 63, 76mm
- Standard square dies: 16, 19, 22, 25, 30, 38, 40, 50mm
- Pipe wall thickness: 0.5-2mm
- Motor: 1500W
- G. W: 250kg
- Dimension: 73×63×103cm



Specifications

- Model: HHW-76B
- Standard round dies: 16, 19, 22, 25, 32, 38, 51, 63, 76mm
- Standard square dies: 16, 19, 22, 25, 30, 38, 40, 50mm
- Pipe wall thickness: 0.5-2mm
- Motor: 1500W
- G. W: 260kg
- Dimension: 73×63×103cm

HHW-76B



Ordering Information

| Catalog No. | Description |
|-------------|---|
| 2561110 | HHW-G76 complete set with all dies, 220V-50Hz |
| 2551022 | HHW-G76 complete set with all dies, 110V-60Hz |
| 2561010 | HHW-76B complete set with all dies, 220V-50Hz |
| 2551131 | HHW-76B complete set with all dies, 110V-60Hz |
| 2561111 | HHW-G76 complete set with all dies, 380V-50Hz |
| 2561011 | HHW-76B complete set with all dies, 380V-50Hz |
| 2561112 | HHW-G76 complete set with all dies, 240V-50Hz |
| 2561012 | HHW-76B complete set with all dies, 240V-50Hz |

Specifications

| Tooling For Round Tubes (mm) | 16 | 19 | 22 | 25 | 32 | 38 | 51 | 63 | 76 |
|-----------------------------------|-----|-----|-----|-----|-----|-----|-----|-----|-----|
| Wall thickness of SS pipe | 0.5 | 0.8 | 1.0 | 1.0 | 1.2 | 1.2 | 1.5 | 1.6 | 2.0 |
| Wall thickness of mild steel tube | 0.8 | 1.0 | 1.2 | 1.2 | 1.5 | 1.5 | 1.8 | 1.8 | 2.3 |

| Tooling For Square Tubes (mm) | 16 | 19 | 22 | 25 | 30 | 38 | 40 | 50 |
|-----------------------------------|-----|-----|-----|-----|-----|-----|-----|-----|
| Wall thickness of SS pipe | 0.5 | 0.8 | 1.0 | 1.0 | 1.2 | 1.2 | 1.5 | 1.5 |
| Wall thickness of mild steel tube | 0.8 | 1.0 | 1.2 | 1.2 | 1.5 | 1.5 | 1.8 | 1.8 |

All In One Hydraulic Knockout Punchers

HHK-8A



HHK-8E



Product Description

- Hydraulic Knockout Punchers is the ideal tools for on-site hole punching in power distribution box and metal plates Simple and quite operation.

Features

- Made of aluminum.
- HHK-8A head is right-angled and rotating 360°,which. allows greater versatility in tight spaces.
- HHK-8E is perfect for fast, straight-on panel punching.
- Can be quiet and fast operated by single person.
- Lightweight, packed in metal carry case.

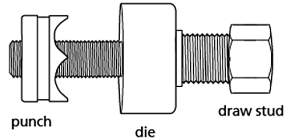
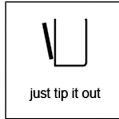
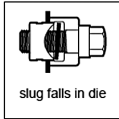
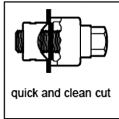
Specifications

- Wall Thickness: Stainless steel plate: up to 1.6mm
Mild steel plate : up to 3.2mm
- Capacity: Φ 16-60mm
- Standard with option C Die set

Ordering Information

| Catalog No. | Model No. | Description |
|-------------|-----------|--|
| 1591310 | HHK-8A | All In One Hydraulic Knockout Punchers |
| 1591311 | HHK-8E | All In One Hydraulic Knockout Punchers |

Punch Kit includes punches, dies and draw studs



Optional punches and dies

| Die set A (mm) | Die set B (mm) | Die set C (mm) | Die set D (mm) |
|--|--|--|---|
| Φ 16, Φ 20, Φ 26, Φ 32, Φ 39, Φ 51 | Φ 22, Φ 27, Φ 34, Φ 43, Φ 49, Φ 60 | Φ 63, Φ 76, Φ 80, Φ 89, Φ 100, Φ 114 | 32*32, 46.5*46.5, 76.5*76.5, 80.5*80.5, 90.5*90.5, 113*113, 151*151 |
| | | | |

BENDING AND FORMING

Separable Hydraulic Knockout Punchers

HHK-8



HHK-15



Product Description

- Hydraulic Knockout Punchers is the ideal tools for on-site hole punching in power distribution box and metal plates Simple and quite operation.

Features

- Can be quiet and fast operated by single person.
- Compact design for field use on construction sites and maintenance jobs
- HHK-8 consists of hand pump, high pressure hose 0.8 meter
- HHK-15 consists of hand pump, high pressure hose 1.5 meter
- Lightweight, packed in carry case

Ordering Information

| Catalog No. | Model No. | Description |
|-------------|-----------|---------------------------------------|
| 1591312 | HHK-8 | Separable Hydraulic Knockout Punchers |
| 1591410 | HHK-15 | Separable Hydraulic Knockout Punchers |



Specifications

| Model No. | Output force (ton) | Ram stroke (mm) | Max. thickness (mm) | | Punch range (mm) | Punch dies (mm) | G.W. (KG) | Packing size(cm) |
|-----------|--------------------|-----------------|---------------------|------------|------------------|-------------------------|-----------|------------------|
| | | | Stainless steel | Mild steel | | | | |
| HHK-8 | 9 | 16 | 1.6 | 3.2 | 16-60 | Φ22,Φ27,Φ34,Φ43,Φ49,Φ60 | 10.3 | 45×39×16.5 |
| HHK-15 | 13 | 22 | 2 | 4 | 16-114 | Φ63Φ76Φ80Φ89Φ100Φ114 | 26.2 | 49×25.5×13 |