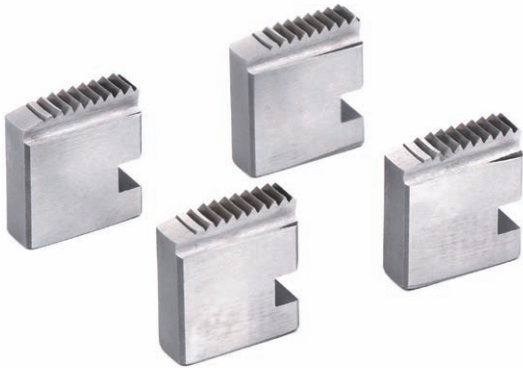


Threading and Grooving

Chapter 1

THREADING AND GROOVING

Threading Dies



Product Description

- The proven quality dies with precise cutting geometry ensure an excellent start-cutting performance, easy threading and ensure clean threads.
- Dies in a high-quality special-grade steel, fully tempered and hardened, for long life usage.
- Teeth milling process: To further improve threading performance, dies will undergo teeth milling process with special milling tool. It will improve the teeth geometry and surface.

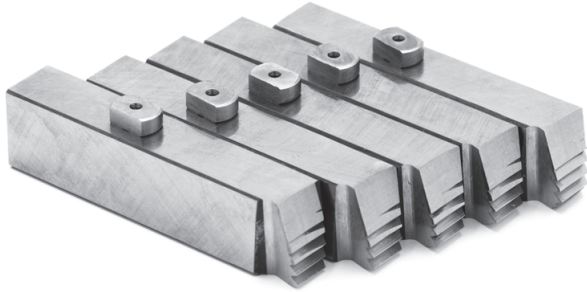
Dies interchangeable with RIDGID type, fits ratchet threader, portable threader

Description	Size / Catalog number					
	1/2"	3/4"	1"	1 1/4"	1 1/2"	2"
NPT HSS	21820301	21820401	21820501	21820601	21820701	21820801
NPT Alloy	21820302	21820402	21820502	21820602	21820702	21820802
BSPT HSS	21810301	21810401	21810501	21810601	21810701	21810801
BSPT Alloy	21810302	21810402	21810502	21810602	21810702	21810802

Dies interchangeable with RIDGID type, fits threading machine

Description	Size / Catalog number				
	1/4"-3/8"	1/2"-3/4"	1"-2"	2 1/2"-3"	2 1/2"-4"
NPT HSS	---	21120101	21120201	---	---
NPT HS	21120604	21120104	21120204	---	21120404
NPT CS	21120602	21120102	21120202	---	---
BSPT HSS	---	21110101	21110201	---	---
BSPT HS	21110604	21110104	21110204	21110304	21110404
BSPT CS	21110602	21110102	21110202	21110302	---
BSPP HS	---	22130101	22130201	---	---

THREADING AND GROOVING



For 141 die head

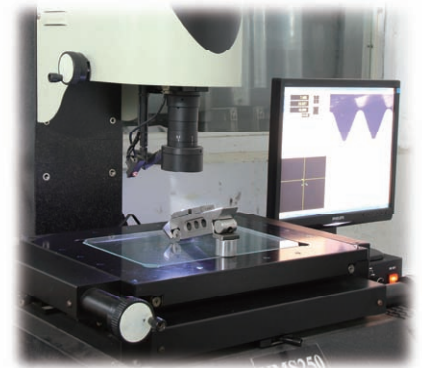
Description	Size / Catalog number
	2 1/2"-4"
NPT HS	21720401

Metric Dies interchangeable with RIDGID type, fits threading machine

Description	Size / Catalog number						
	M12	M14-16	M18-22	M24-27	M30-33	M36-39	M42-45
Metric Alloy	22150701	22150801	22150901	22151001	22151101	22151201	22151301

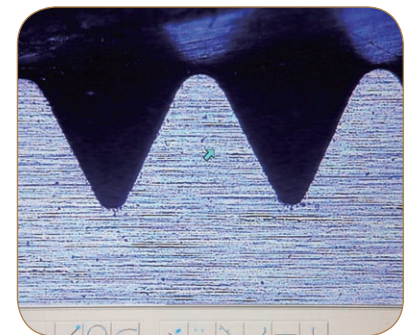
Dies interchangeable with REX type, fits threading machine

Description	Size / Catalog number			
	1/2"-3/4"	1"-2"	2 1/2"-3"	2 1/2"-4"
NPT HS	21220104	21220204	---	21220404
NPT CS	21220102	21220202	---	21220402
BSPT HS	21210104	21210204	21210304	21210404
BSPT CS	21210102	21210202	21210302	21210402



F4 type dies fits Threading Machine: SQ50C, SQ100D

Description	Size / Catalog number	
	1/2"-3/4"	1"-2"
NPT HS	---	---
NPT Alloy	21520102	21520202
BSPT HS	21510103	21510203
BSPT Alloy	21510102	21510202



Teeth projection (BSPT)

THREADING AND GROOVING

100 type dies fits Threading Machine: SQ50B1, SQ80D1, SQ100D1

Description	Size / Catalog number				
	1/4"-3/8"	1/2"-3/4"	1"-2"	2 1/2"-3"	2 1/2"-4"
NPT HS	---	21320103	21320203	---	21220404
NPT CS	---	21320102	21320202	21320302	21220402
BSPT HS	---	21310103	21310203	21310303	21210404
BSPT CS	---	21310102	21310202	21310302	21210402

- CS standard: high quality alloy, teeth milling, special heat treatment
- HS standard: high quality high speed steel, teeth milling, special heat treatment
- HSS standard: super quality high speed steel, teeth milling

Dies level	Detailed Characteristics			
	Material	Teeth milling	Precise machining	Special heat treatment
Alloy	High quality alloy		●	
CS	High quality alloy	●	●	●
HS	High quality HSS	●	●	●
HSS	Premier quality HSS	●	●	●

Manual Ratchet Threaders

HL-12R

Product Description

- All matched Threader/Sets including Die Heads, Ratchet Assembly, Ratchet and Alloy Dies. Different Threader Sets maybe use different Dies and Head, consult us when you choosing.

Ratchet Lever

- Convenient, lockable reversal of ratchet direction

Quick adjustment

- Secure hold with retainer locking, simple insertion and removal of die heads

User friendly

- Slim, compact shape with excellent overall size, angle requirements of 22.5°

For easy work in difficult to reach positions

- Ratchet Assembly and long lever

Labor saving

Quick Change Die Heads

- Positive octagonal universal drive with retainer locking

Secure hold

- Long pipe guide

Perfect centering

- Simple insertion and removal of die heads

Easy changing

Precision Dies

- High-quality tempered steel
- Optimised cutting geometry

Ordering Information

Catalog No.		Model No.	Capacity		N.W
BSPT	NPT		in.	mm	kg
602210	602209	HL-12R	½-2	12-50	25



THREADING AND GROOVING

Manual Ratchet Threader With Carrying Case



HL-62D

Catalog No.		Model No.	Capacity		N.W
BSPT	NPT		in.	mm	kg
4511010	4511011	HL-62D	¼-1¼	6-32	6.5
4511012	4511013	HL-62D	3/8-1¼	10-32	6
4511014	4511015	HL-62D	½-1¼	12-32	5.5



HL-62B

Catalog No.		Model No.	Capacity		N.W
BSPT	NPT		in.	mm	kg
4511110	4511111	HL-62B	½-1¼	12-32	4.5



HL-62

Catalog No.		Model No.	Capacity		N.W
BSPT	NPT		in.	mm	kg
4511210	4511211	HL-62	¼-1¼	6-32	6.25
4511212	4511213	HL-62	3/8-1¼	10-32	5.5
4511214	4511215	HL-62	½-1¼	12-32	4.75
4511216	4511217	HL-62	½-1	12-25	4

Manual Ratchet Threader With Carrying Case



HL-62M

Catalog No.		Model No.	Capacity		N.W
metric					kg
45112010		HL-62M	M16 – M32		4



HL-63

Catalog No.		Model No.	Capacity		N.W
BSPT	NPT		in.	mm	kg
4511310	4511311	HL-63	3/8-2	10-50	12.5
4511312	4511313	HL-63	1/2-2	12-50	12



HL-63

Catalog No.		Model No.	Capacity		N.W
BSPT	NPT		in.	mm	kg
4511314	4511315	HL-63	1 1/4-2	32-50	9
4511316	4511317	HL-63	1 1/2-2	40-50	8

THREADING AND GROOVING

Manual Ratchet Threader With Carrying Case



HL-112

Catalog No.	Model No.	Capacity		N.W
		in.	mm	kg
4511510	HL-112	½-1¼	12-32	3.5



HL-114

Catalog No.		Model No.	Capacity		N.W
BSPT	NPT		in.	mm	kg
4512210	4512211	HL-114	½-2	12-50	8



HL-117

Catalog No.		Model No.	Capacity		N.W
BSPT	NPT		in.	mm	kg
4512310	4512311	HL-117	2 ½-4	62-100	21

Power Drive

HSQ50



Product Description

- The Model HSQ50 power drive, constructed with a rugged cast aluminum housing, is designed for heavy-duty applications and daily use. It is ideal for mechanical, electrical and plumbing jobs. HSQ50 can be used to actuate pipe cutter, geared threader etc.

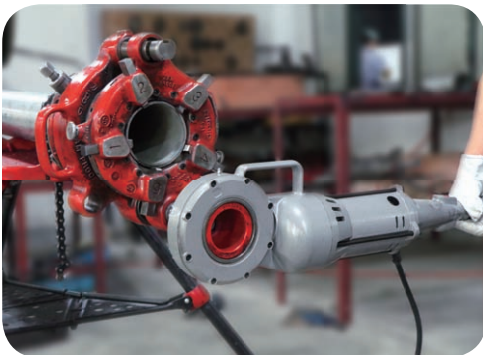
Specifications

- **Motor:** Universal, 1500W
- **Speed:** 32RPM (no load)
- **Gear head:** All Spur-gear Reduction.
Spring-loaded Adapter Pawl.
- **Body:** Hardened Steel Spindle Gear
Gear Case, Motor Housing and Handle are Cast Aluminum.
- **Threading Capacity:** 1/2"-2" (die heads to order separately)
- **Length:** 72cm



Ordering Information

Catalog No.	Model No.	Description	N.W(kg)
306301	HSQ50	Power drive 110V-60Hz	20
306302	HSQ50	Power drive 220V-50Hz	20



THREADING AND GROOVING

Nipple Chuck



819 Nipple Chuck Kit

- Holds short or close nipples for threading.
- For use with SQ50B1, SQ50C1, SQ80D, SQ80D1, SQ100D, SQ100D1, SQ50A, SQ80A, SQ100A, SQ50, SQ50D, SQ50E, SQ50F, SQ80C1, SQ100F.
- Standard Nipple Chuck includes insert and 5 adapters: ½", ¾", 1", 1¼", and 1½". (Nipple Chuck body serves as 2" Adapter.)

Ordering Information

Catalog No.	Model No.	Description	Pipe Capacity		N.W(kg)
			(in)	(mm)	
4581011	819	NPT Nipple Chuck	½-2	12-50	4.5
4581010	819	BSPT Nipple Chuck	½-2	12-50	4.5



Oiler



Product Description

- To work with portable threaders or other manual oiling required applications.
- Oil is filtered and recirculated through reservoir.
- An ergonomic 2-finger trigger design that reduces user fatigue.

Ordering Information

Catalog No.	Model No.	Description	N.W (kg)
11102001		Oiler Complete	5
11102004		Oiler Gun with Hose	2



Portable Threading Machine

SQ30-2B



Product Description

- The SQ30-2B is a light weight and powerful portable threader. It is designed for threading ½"-2" pipe with 11-R Die Heads. The SQ30-2B is equipped with a full set of 11-R Die Heads, ½"-2", the SQ30-2B Support Arm and a durable Carrying Case. The SQ30-2B Power Drive is the perfect portable power drive for maintenance and repair workers, as well as service plumbers requiring 2" pipe capacity.



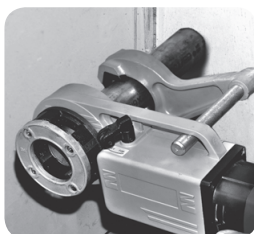
Model SQ30-2B with Support Arm, Die Heads and Carrying Case

Specifications

- **Capacity:** ½"-2" (15mm-50mm) pipe
- **Motor:** 1350W Universal 110V or 220V, 50/60Hz.
- **Switch:** Heavy-duty paddle-type switch with safety lock off device (automatically locks off when released). Separate mechanical transmission FOR/REV switch. Reverse 3-times faster than threading.
- **Gear Head:** Spur gear reduction/ring gear drive. All shafts, ball and needle bearing mounted. Permanently lubricated gear housing.
- **Gear Housing:** Die cast Aluminum.
- **Body & Handle:** Durable heavy-duty fiberglass reinforced plastic.
- **Spindle Speed:** 28 RPM for threading, 51 RPM reverse (No load)
- **Die Heads:** ½", ¾", 1", 1¼", 1½", 2" (Type 11R)
- Includes support arm.
- **Screw Threads:** NPT / BSPT
- **Dies Material:** Alloy standard, (HSS optional)
- **Die Head Adapter:** Used with ½" through 1¼" die heads.
- **weight:** 8 kg, power drive only.
- **Length:** 76 cm
- Approved by CSA and CE standards



Model SQ30-2B operating



Operation in close quarters

Ordering Information

Catalog No.	Model No.	Description	N.W(kg)
306202	SQ30-2B	110V ½"-2" NPT w/Case and Support Arm	22
306201	SQ30-2B	220V ½"-2" BSPT w/Case and Support Arm	22
Accessories			
30111028		Adapter	0.65
11101002		Support Arm	
11102001		Oiler (optional)	5
602201	H401	1/8"-6" TRISTAND chain vise (optional)	20

THREADING AND GROOVING

Threading Machine



Capacity

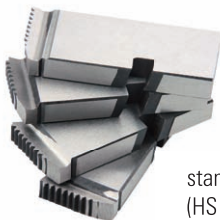
- **Pipe:** ¼"-1½" (8mm-40mm)
- **Bolt:** 12mm-33mm

Features

- Compact, light weight design.
- Powerful motor and transmission.
- Through die head oiling.

Technical Specifications

- **Motor:** 1500W universal, 50/60Hz
- **Switch:** ON/OFF heavy duty switch, foot switch and FOR/OFF/REV switch optional
- **Spindle Speed:** 56 RPM
- **Front Chuck:** Hammer type with replaceable rocker action jaw inserts.
- **Rear Centering Device:** Cam action.
- **Oiling:** Through die head.
- **Oil Pump:** Self-priming constant flow.



standard dies
(HS standard)

Standard dies

- ¼"-3/8" universal CS dies set.
- ½"-¾" universal CS dies set.
- 1"-2" universal CS dies set.



425 die head

Ordering Information

Catalog No.	Model No.	Description	Spindle Speed RPM	Pipe Threading Capacity		Rod Threading Capacity	N.W (kg)
				in.	mm.	metric	
301503	SQ40	110V, 50/60Hz	38	¼-1½	8-40	M12-M33	38
302502	SQ40	220V, 50/60Hz	38	¼-1½	8-40	M12-M33	38

* Die head and dies, order separately.



reinforced cutting wheel

Accessories

Catalog No.	Model No.	Description	N.W(kg)
	425	Die head, Quick-open (standard)	5.3
	424	Die head, Self-open (optional)	5.8
40601009		reinforced cutting wheel	

Power Drive

SQ50D



Features

- Speed Chuck
- Reversible 1500W universal motor.
- Recessed On/Off/Reverse switch.
- Approval by CSA and CE standards.
- Ideal for use with roll groover attachment and threading attachment.

Specifications

- **Motor:** 1500W Universal, reversible motor, single-phase, 110V or 220V, 50/60Hz.
- **Switch:** Heavy-duty FOR/OFF/REV and Integral Foot Switch.
- **Chuck:** Speed chuck with replaceable rocker-action jaws.
- **Spindle Speed:** 38 RPM (57 RPM available)
- **Rear Centering Device:** Cam-action turns with chuck.
- **Support Bar:** Heavy-duty

Ordering Information

Catalog No.	Model No.	Description	Spindle Speed RPM	N.W(kg)
302306	SQ50D PD	110V, 50/60Hz	38	55
302307	SQ50D PD	110V, 50/60Hz	57	55
302305	SQ50D PD	220V, 50/60Hz	38	55



With GC02 Groover



With YG12A Groover



With Threading Attachment

Threading Machine Complete



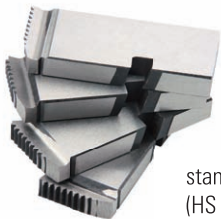
SQ50D

Standard Equipment

- Model SQ50D Power Drive with foot switch
- Quick-open die head, universal
- ½"-¾" universal HS dies set.
- 1"-2" universal HS dies set.
- **Cutter:** Capacity: 1/8"-2"(6mm-50mm) pipe
- **Reamer:** Positive-locking, 5-flute cone, right-hand 1/8"-2" (6mm-50mm).
- Carriage with lever.
- TRIPOD support stand
- Oiler

Ordering Information

Catalog No.	Model No.	Description	Spindle Speed RPM	Pipe Threading Capacity		Rod Threading Capacity	N.W(kg)
				in.	mm.	metric	
302302	SQ50D complete	110V, 50/60Hz	38	¼-2	6-50	M12-M45	80
302301	SQ50D complete	220V, 50/60Hz	38	¼-2	6-50	M12-M45	80



standard dies (HS standard)



425 die head



reinforced cutting wheel



Model SQ50D with "T" Transporter (for optional)

Threading Machine



SQ50

Capacity

- Pipe: ¼"-2"(8mm-50mm)
- Bolt: 12mm-45mm

Features

- Compact, light weight design.
- Powerful motor and transmission.
- Through die head oiling.
- Approved by CSA and CE standards.

Technical Specifications

- Motor: 1500W universal, 50/60Hz
- Switch: ON/OFF heavy duty switch, foot switch and FOR/OFF/REV switch optional
- Spindle Speed: 38 RPM
- Front Chuck: Hammer type with replaceable rocker action jaw inserts.
- Rear Centering Device: Cam action.
- Oiling: Through die head.
- Oil Pump: Self-priming constant flow.



standard dies
(HS standard)

Standard dies

- ½"-¾" universal HS dies set.
- 1"-2" universal HS dies set.



428 die head (standard)

Ordering Information

Catalog No.	Model No.	Description	Spindle Speed RPM	Pipe Threading Capacity		Rod Threading Capacity	N.W (kg)
				in.	mm.	metric	
302502	SQ50	110V, 50/60Hz	38	¼-2	8-50	M12-M45	67
302501	SQ50	220V, 50/60Hz	38	¼-2	8-50	M12-M45	67

* Die head and dies, order separately.



reinforced cutting wheel

Accessories

Catalog No.	Model No.	Description	N.W(kg)
	428	Die head, Quick-open (standard)	5.6
	425	Die head, Quick-open (optional)	5.3
	424	Die head, Self-open (optional)	5.8
40601009		reinforced cutting wheel	

THREADING AND GROOVING

Threading Machine

SQ50E



Capacity

- Pipe: ¼"-2" (8mm-50mm)
- Bolt: 12mm-45mm

Features

- Heavy-duty proven performance.
- Fast transport and set-up.
- Self-Contained Oil System with adjustable flow control.
- Approved by CE standards.

Technical Specifications

- Motor: 1500W universal, 50/60Hz
- Switch: ON/OFF heavy duty switch, foot switch and FOR/OFF/REV switch are optional
- Spindle Speed: 38 RPM.
- Front Chuck: Hammer type with replaceable rocker action jaw inserts.
- Rear Centering Device: Cam action.
- Oiling System: Through die head, with intergral oil reservoir.
- Pump: Self-priming adjustable flow, gerotor pump.

Standard Dies

- ½"-¾" universal HS dies set.
- 1"-2" universal HS dies set.

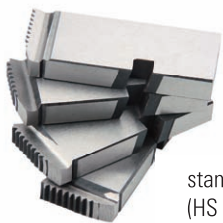
Ordering Information

Catalog No.	Model No.	Description	Spindle Speed RPM	Pipe Threading Capacity		Rod Threading Capacity*	N.W (kg)
				in.	mm.	metric	
302312	SQ50E	110V, 50/60Hz	38	¼-2	8-50	M12-M45	75
302311	SQ50E	220V, 50/60Hz	38	¼-2	8-50	M12-M45	75

* Die head and dies, order separately.

Accessories

Catalog No.	Model No.	Description	N.W(kg)
	425	Die head, Quick-open (optional)	5.3
	424	Die head, Self-open (standard)	5.8
11001004	651	Pneumatic Folding Wheel Stand (optional)	22
40601003		reinforced cutting wheel	



standard dies
(HS standard)



424 die head (standard)



reinforced cutting wheel



651 stand (optional)

Threading Machine

SQ50F



Capacity

- **Pipe:** ¼"-2" (8mm-50mm)
- **Bolt:** 12mm-45mm

Features

- Heavy-duty proven performance.
- 1.5KW induction motor ensures quiet operation with high speed.
- Self-Contained Oil System constant flow.
- Approved by CSA and CE standards.

Technical Specifications

- **Motor:** 1500W induction, 50/60Hz
- **Switch:** ON/OFF heavy duty switch, foot switch and FOR/OFF/REV switch are optional
- **Spindle Speed:** 38 RPM.
- **Front Chuck:** Hammer type with replaceable rocker action jaw inserts.
- **Rear Centering Device:** Cam action.
- **Oiling System:** Through die head, with intergral oil reservoir.
- **Pump:** Self-priming constant flow



standard dies
(HS standard)

Standard Dies

- ½"-¾" universal HS dies set.
- 1"-2" universal HS dies set.



425 die head

Ordering Information

Catalog No.	Model No.	Description	Spindle Speed RPM	Pipe Threading Capacity		Rod Threading Capacity*	N.W (kg)
				in.	mm.	metric	
302317	SQ50F	110V, 50/60Hz	36	¼-2	8-50	M12-M45	77
302316	SQ50F	220V, 50/60Hz	36	¼-2	8-50	M12-M45	77

* Die head and dies, order separately.



reinforced cutting wheel

Accessories

Catalog No.	Model No.	Description	N.W(kg)
	425	Die head, Quick-open (optional)	5.3
	424	Die head, Self-open (optional)	5.8
40601003		reinforced cutting wheel	

THREADING AND GROOVING

Threading Machine

SQ80C1

Capacity

- **Pipe:** ¼"-3" (8mm-80mm)
- **Bolt:** 12mm-45mm

Features

- Heavy-duty proven performance.
- Fast transport and set-up.
- Self-Contained Oil System with adjustable flow control.
- Approved by CE standards.

Technical Specifications

- **Motor:** 1500W universal, 50/60Hz
- **Switch:** ON/OFF heavy duty switch, foot switch and FOR/OFF/REV switch are optional
- **Spindle Speed:** 32 RPM.
- **Front Chuck:** Hammer type with replaceable rocker action jaw inserts.
- **Rear Centering Device:** Cam action.
- **Oiling System:** Through die head, with intergral oil reservoir.
- **Pump:** Self-priming adjustable flow, gerotor pump.

Standard Dies

- ½"-¾" universal HS dies set.
- 1"-2" universal HS dies set.
- 2 1/2"-3" universal HS dies set.

Ordering Information

Catalog No.	Model No.	Description	Spindle Speed RPM	Pipe Threading Capacity		Rod Threading Capacity	N.W (kg)
				in.	mm.	metric	
303301	SQ80C1	110V, 60Hz	32	¼-3	8-80	M12-M45	74
303302	SQ80C1	220V, 50Hz	32	¼-3	8-80	M12-M45	74

* Die head and dies, order separately.

Accessories

Catalog No.	Model No.	Description	N.W(kg)
	425	Die head, Quick-open (optional), ¼"-2"	5.3
	424	Die head, Self-open (standard), ¼"-2"	5.8
	432	Die head, Self-open 2½"-3"	6
11001004	651	Pneumatic Folding Wheel Stand (optional)	22
40601008		reinforced cutting wheel	



reinforced cutting wheel



standard dies (HS standard)



424 die head



432 die head



651 stand (optional)

Threading Machine

SQ100F



Capacity

- **Pipe:** ¼"-4" (8mm-100mm)
- **Bolt:** 12mm-45mm

Features

- Heavy-duty proven performance.
- Threads ¼"-¾" pipe at 36RPM, 1"-2" at 20RPM, 2½"-4" at 11RPM.
- An induction motor ensures sound levels well when using.
- A special capacitor-start / capacitor run motor allows the machine to thread where voltage drop is experienced.
- Approved by CSA and CE standards.

Technical Specifications

- **Motor:** 1500W induction, 50/60Hz, single phase.
- **Switch:** ON/OFF heavy duty switch, foot switch and FOR/OFF/REV switch is optional.
- **Spindle Speed:** 36/20/11 RPM.
- **Front Chuck:** Hammer type with replaceable rocker action jaw inserts.
- **Rear Centering Device:** Cam action.
- **Oiling System:** Through die head, with integral oil reservoir.

Standard Dies

- ½"-¾" universal HS dies set.
- 1"-2" universal HS dies set.
- 2 1/2"-4" universal HS dies set.

Ordering Information

Catalog No.	Model No.	Description	Spindle Speed RPM	Pipe Threading Capacity		Rod Threading Capacity	N.W (kg)
				in.	mm.	metric	
304301	SQ100F	110V, 50/60Hz	36/20/11	¼-4	8-100	M12-M45	140
304302	SQ100F	220V, 50/60Hz	36/20/11	¼-4	8-100	M12-M45	140

* Die head and dies, order separately.

Accessories

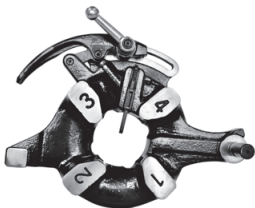
Catalog No.	Model No.	Description	N.W(kg)
	443	Die head, Self-open, ¼"-2"	6.2
	444	Die head, Self-open, 2½"-4"	14.4
4581011	819	Nipple Chuck (optional)	4.5
40601008		reinforced cutting wheel	



standard dies (HS standard)



reinforced cutting wheel



443 die head



444 die head



672A stand (optional)

THREADING AND GROOVING

Threading Machine

SQ100F-L



Capacity

- **Pipe:** ½"-4" (8mm-100mm)
- **Bolt:** 10mm-33mm

Features

- Heavy-duty proven performance.
- Threads ½"-¾" pipe at 36RPM, 1"-2" at 20RPM, 2½"-4" at 11RPM.
- An induction motor ensures sound levels well when using.
- A special capacitor-start / capacitor run motor allows the machine to thread where voltage drop is experienced.

Technical Specifications

- **Motor:** 1500W induction, 50/60Hz, single phase.
- **Switch:** ON/OFF heavy duty switch, foot switch and FOR/OFF/REV switch is optional.
- **Spindle Speed:** 36/20/11 RPM.
- **Front Chuck:** Hammer type with replaceable rocker action jaw inserts.
- **Rear Centering Device:** Cam action.
- **Oiling System:** Through die head, with intergral oil reservoir.

Standard Dies

- ½"-¾" universal HS dies set.
- 1"-2" universal HS dies set.
- 2 1/2"-4" universal HS dies set.

Ordering Information

Catalog No.	Model No.	Description	Spindle Speed RPM	Pipe Threading Capacity		Rod Threading Capacity	N.W (kg)
				in.	mm.	metric	
304306	SQ100F-L	110V, 50/60Hz	36/20/11	½-4	8-100	M10-M33	140
304307	SQ100F-L	220V, 50/60Hz	36/20/11	½-4	8-100	M10-M33	140

* Die head and dies, order separately.

Accessories

Catalog No.	Model No.	Description	N.W(kg)
	428	Die head, Self-open, ½"-2"	5.6
	447	Die head, Self-open, 2½"-4"	9
4581011	819	Nipple Chuck (optional)	4.5
40601008		reinforced cutting wheel	



428 die head



447 die head



reinforced cutting wheel



672A stand (optional)

Threading Machine

SQ50A



SQ100A



SQ80A



Ordering Information

Catalog No.	Model No.	Description	Power Watts	Spindle Speed RPM	Pipe Threading Capacity		N.W (kg)
					in.	mm.	
302117	SQ50A	110V, 60Hz	1000	28	1/2-2	15-50	60
302101	SQ50A	220V, 50Hz	1000	28	1/2-2	15-50	60
303103	SQ80A	110V, 60Hz	1100	28/14	1/2-3	15-80	100
303101	SQ80A	220V, 50Hz	1100	28/14	1/2-3	15-80	100
304101	SQ100A	110V, 60Hz	1100	28/12	1/2-4	15-100	140
304111	SQ100A	220V, 50Hz	1100	28/12	1/2-4	15-100	140

THREADING AND GROOVING

Threading Machine

SQ50B1



SQ100D1



SQ80D1



Ordering Information

Catalog No.	Model No.	Description	Power Watts	Spindle Speed RPM	Pipe Threading Capacity		N.W (kg)
					in.	mm.	
302105	SQ50B1	110V, 60Hz	750	23	1/2-2	15-50	60
302106	SQ50B1	220V, 50Hz	750	23	1/2-2	15-50	60
303205	SQ80D1	110V, 60Hz	750	26/11	1/2-3	15-80	100
303206	SQ80D1	220V, 50Hz	750	26/11	1/2-3	15-80	100
304108	SQ100D1	110V, 60Hz	750	24/10	1/2-4	15-100	140
304107	SQ100D1	220V, 50Hz	750	24/10	1/2-4	15-100	140

Threading Machine

SQ50C1



SQ100D



SQ80D




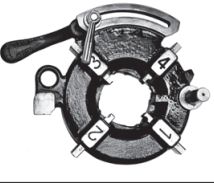
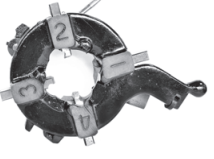





Ordering Information


Catalog No.	Model No.	Description	Power Watts	Spindle Speed RPM	Pipe Threading Capacity		N.W (kg)
					in.	mm.	
302118	SQ50C1	110V, 60Hz	900	23	1/2-2	15-50	60
302119	SQ50C1	220V, 50Hz	900	23	1/2-2	15-50	60
303301	SQ80D	110V, 60Hz	900	26/11	1/2-3	15-80	100
303302	SQ80D	220V, 50Hz	900	26/11	1/2-3	15-80	100
304108	SQ100D	110V, 60Hz	900	24/10	1/2-4	15-100	140
304107	SQ100D	220V, 50Hz	900	24/10	1/2-4	15-100	140



THREADING AND GROOVING

Threading Die Heads List

Image	Model No.	For Machines	How Open	Dies type	Capacity	Ref. No.	N.W(kg)
	420	SQ50B1	Receding Self-open	100 type	1/2"-2"	10601003	5.6
	424	SQ40/SQ50/ SQ50D/SQ50E/ SQ50F/SQ50A/ SQ50C1/SQ80C1	Self-open	RIDGID	1/8"-2"	BSPT: 10601012 NPT: 10601013	5.8
	425	SQ40/SQ50/ SQ50D/SQ50E/ SQ50F/SQ50A/ SQ50C1/SQ80C1	Quick-open	RIDGID	1/8"-2"	BSPT: 10601009 NPT: 10601010	5.3
	428	SQ50/SQ50A/SQ50C1/ SQ80C1/SQ80D/ SQ100F-L	Quick-open	REX	1/2"-2"	BSPT: 10602009 NPT: 10602010	5.6
	430	SQ80D1	Receding Self-open	100 type	1/2"-2"	10602001	5.9
	431	SQ80D1	Receding Self-open	100 type	2 1/2"-3"	10602002	7.4
	432	SQ80C1	Self-open	RIDGID	2 1/2"-3"	BSPT: 10602011 NPT: 10602012	6
	433B	SQ80C1/SQ80D/ SQ80A	Quick-open	REX	2 1/2"-3"	10602013	4.9

THREADING AND GROOVING

Image	Model No.	For Machines	How Open	Dies type	Capacity	Ref. No.	N.W(kg)
	440	SQ100D1	Receding Self-open	100 type	1/2"-2"	10603001	6.5
	441	SQ100D/SQ100D1	Receding Self-open	100 type / REX	2 1/2"-4"	10603002	8.8
	442A	SQ100D	Quick-open	REX	1/2"-2"	10603004	6.6
	443	SQ100F	Self-open	RIDGID	1/4"-2"	BSPT: 10603011 NPT: 10603010	6.2
	444	SQ100F	Receding Self-open	RIDGID	2 1/2"-4"	BSPT: 10603009 NPT: 10603008	14.4
	447	SQ100F-L	Quick-open	REX	2 1/2"-4"	10603007	9

	422	SQ50C1	Quick-open	F4		10601006	
	442	SQ100D	Quick-open	F4		10603003	

* F4 type die heads, only offer as spare parts.

Hydraulic Roll Groover

YG6C-A



Model YG6C-A
Hydraulic Roll Groover

Product Description

• The Model YG6C-A hydraulic roll groover, powered by 550W induction motor, is capable of grooving up to 6" Sch 10 and 3" Sch 40 standard wall pipes. "All-in-one" design for the drive shaft, suitable for heavy duty jobs. The YG6C-A comes with standard support legs, the unit can be set up quickly. The induction motor ensures steady and quiet working.

Technical Specifications

- **Motor:** 550W induction, 50/60Hz
- **Switch:** ON/OFF heavy duty switch.
- **Spindle Speed:** 24 RPM
- **Capacity:** 1¼"-6" Sch. 10 steel, stainless steel.
1¼"-3" Sch. 40 steel, stainless steel.
- **Weight:** 75 kg

Standard Dies

- Model YG6C-A grooving machine.
- One 1¼"-1½" Schedule 10/40 Roll Set.
- One 2"-6" Schedule 10 (2"-3" Schedule 40) Roll Set.
- Model 658C Pipe Support Stand.

Ordering Information

Catalog No.	Model No.	Description	N.W(kg)
501202	YG6C-A	Hydraulic Roll Groover, 110V/60Hz	75
501201	YG6C-A	Hydraulic Roll Groover, 220V/50Hz	75
Accessories			
	--	Roll Set for 1¼"-1½"	
		Roll Set for 2"-6"	
11002009	658C	Pipe support stand	



1 1/4"-1 1/2" Roller and Shaft



2"-6" Roller and Shaft



Model 658C Pipe Support Stand



Grooving operation

Hydraulic Roll Groover

YG6D-A



Model YG6D-A Hydraulic Roll Groover

Product Description

- The Model YG6D-A hydraulic roll groover, equips updated hydraulic pump, with convenient depth adjusting function, powered by 550W induction motor, is capable of grooving 2"-6" Sch 10 and 2"-3" Sch 40 standard wall pipes. "Separate knurling roller" design of drive shaft for convenient replacement changing. The YG6D-A comes with standard support legs, the unit can be set up quickly. The induction motor ensures steady and quiet working.

Technical Specifications

- **Motor:** 550W induction, 50/60Hz
- **Switch:** ON/OFF heavy duty switch.
- **Spindle Speed:** 24 RPM
- **Capacity:** 2"-6" Sch. 10 steel, stainless steel.
2"-3" Sch. 40 steel, stainless steel.
- **Weight:** 75 kg

Standard Dies

- Model YG6D-A grooving machine.
- One 2"-6" Schedule 10 (2"-3" Schedule 40) Roll Set.
- Model 658C Pipe Support Stand.

Ordering Information

Catalog No.	Model No.	Description	N.W(kg)
501203	YG6D-A	Hydraulic Roll Groover, 110V/60Hz	75
501204	YG6D-A	Hydraulic Roll Groover, 220V/50Hz	75
Accessories			
		Roll Set for 2"-6"	
11002009	658C	Pipe support stand	



Roller set and Shaft



Model 658C Pipe Support Stand



Grooving operation

Hydraulic Roll Groover

YG6D-A2



Model YG6D-A2
Hydraulic Roll Groover

Product Description

- The Model YG6D-A2 hydraulic roll groover, equips updated hydraulic pump, with convenient depth adjusting function, powered by 750W induction motor, is capable of grooving 2"-6" Sch 10 and 2"-3" Sch 40 standard wall pipes. "Separate knurling roller" design of drive shaft for convenient replacement changing. The YG6D-A2 comes with standard support legs, the unit can be set up quickly. The induction motor ensures steady and quiet working.

Technical Specifications

- **Motor:** 750W induction, 50/60Hz
- **Switch:** ON/OFF heavy duty switch.
- **Spindle Speed:** 24 RPM
- **Capacity:** 2"-6" Sch.10/40 steel, stainless steel.
- **Weight:** 75 kg

Standard Dies

- Model YG6D-A2 grooving machine.
- One 2"-6" Schedule 10 (2"-3" Schedule 40) Roll Set.
- Model 658C Pipe Support Stand.

Ordering Information

Catalog No.	Model No.	Description	N.W(kg)
	YG6D-A2	Hydraulic Roll Groover, 110V/60Hz	75
	YG6D-A2	Hydraulic Roll Groover, 220V/50Hz	75
Accessories			
		Roll Set for 2"-6"	
11002009	658C	Pipe support stand	



Roller set and Shaft



Model 658C Pipe Support Stand



Grooving operation

Roll Groover



Model GC02
with SQ50D power drive



Roller Set 1 1/4"-6"



Model GC02



Model 1107 Pipe Support
Stand for Roll Groovers
For option

GC02

Product Description

- The Model GC02 Roll Groover is the most durable and efficient light weight portable unit available. Built with a solid, durable cast-iron housing, it withstands heavy usage, yet is light enough for easy transportation. The GC02 features a single strock feed mechanism that allows for accurate operation quickly and effortlessly.

Features

- Specifically designed for field service roll grooving applications.
- Quick and easy mount to HONGLI model SQ50D Power Drive.
- Cam-type feed actuation-translate into minimum operator effort to form roll grooves.
- Durable cast-iron housing withstands extensive field use.
- Depth adjustment screw separate from feed mechanism allows for consistent groove depth.
- Light weight, only 17kg.
- Integral feed handle is part of overall unit, no extra tools required.
- Easy serviceability – drive and groove rolls are easy to change.

Technical Specifications

- **Capacity:** 1 1/4"-6" Sch. 10 steel, stainless steel.
1 1/4"-3" Sch. 40 steel, stainless steel.
- **Weight:** 17 kg

Standard Dies

- One 1 1/4"-6" Roll Groove Set. (1 1/4"-6" Sch. 10, 1 1/4"-3" Sch. 40)

Ordering Information

Catalog No.	Model No.	Description	N.W(kg)
503204	GC02	Roll groover only, with standard 1 1/4"-6" roll set	17
503205	GC02+SQ50D	Roll groover with SQ50D power drive 110V/50-60Hz	
503206	GC02+SQ50D	Roll groover with SQ50D power drive 220V/50-60Hz	
Accessories			
	--	Roll Set for 1 1/4"-6"	
	1107	Pipe support stand	

THREADING AND GROOVING

Hydraulic Roll Groover

YG12A



Model YG12A
with SQ50D power drive

Product Description

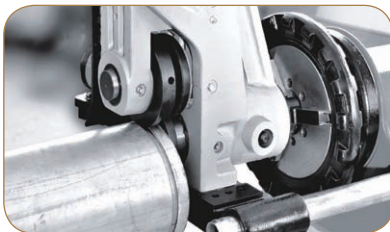
- The Model YG12A Hydraulic Roll Groover features a powerful 15-ton hydraulic ram in a compact, easy to transport unit. With one man set-up and operation, the YG12A is the ideal groover for job site requirements. The YG12A mounts quickly to SQ50D power drive. Designed to provide maximum efficiency, the YG12A is capable of grooving up to 12" Schedule 10 and 8" Schedule 40 standard wall pipes. Roll set changeout is accomplished in seconds.

Technical Specifications

- **Capacity:** 2"-12" Sch. 10 steel, stainless steel.
2"-8" Sch. 40 steel, stainless steel.
- **Weight:** 53 kg
- One 2"-6" Schedule 10/40 Roll Set
- One 8"-12" Schedule 10 (8" Schedule 40) Roll Set

Ordering Information

Catalog No.	Model No.	Description	N.W(kg)
502302	YG12A	Roll groover only, with standard 2"-12" roll set	53
502303	YG12A+SQ50D	Roll groover with SQ50D power drive 110V/50-60Hz	
502304	YG12A+SQ50D	Roll groover with SQ50D power drive 220V/50-60Hz	
Accessories			
	--	Roll Set for 2"-6"	
	--	Roll Set for 8"-12"	
	1107	Pipe support stand (optional)	



Grooving operation



2"-6" Roller and Shaft



8"-12" Roller and Shaft



Model 1107 Pipe Support Stand
for Roll Groovers For option



Mounting base for SQ100F



Hydraulic Roll Groover

YG12E



Model YG12E hydraulic Roll Groover

Product Description

- The Model YG12E hydraulic roll groover, equips updated hydraulic pump, with convenient depth adjusting function, powered by 750W induction motor, is capable of grooving 2"-12" Sch 10 and 2"-6" Sch 40 standard wall pipes. "Separate knurling roller" design of drive shaft for convenient replacement changing. The YG12E comes with standard support legs, the unit can be set up quickly. The induction motor ensures steady and quiet working.

Technical Specifications

- **Motor:** 750W induction, 50/60Hz
- **Switch:** ON/OFF heavy duty switch.
- **Spindle Speed:** 24 RPM
- **Capacity:** 2"-12" Sch. 10 steel, stainless steel.
2"-6" Sch. 10/ 40 steel, stainless steel.
- **Weight:** 120 kg

Standard Dies

- Model YG12E grooving machine.
- One 2"-6" Schedule 10/40 Roll Set.
- One 8"-12" Schedule 10 Roll Set.
- Model 658C Pipe Support Stand.

Ordering Information

Catalog No.	Model No.	Description	N.W(kg)
502205	YG12E	Hydraulic Roll Groover, 110V/60Hz	120
502206	YG12E	Hydraulic Roll Groover, 220V/50Hz	120
Accessories			
	--	Roll Set for 2"-6"	
	--	Roll Set for 8"-12"	
11002009	658C	Pipe support stand	14



Grooving operation



Model 658C Pipe Support Stand

Roller



2"-6"

8"-12"

Knurling Roller



2"-3"

4"-6"

8"-12"

Hydraulic Roll Groover

YG12D2



Model YG12D2 hydraulic Roll Groover

Product Description

- The Model YG12D2 hydraulic roll groover, equips updated hydraulic pump, with convenient depth adjusting function, powered by 1100W induction motor, is capable of grooving 2"-12" Sch 10 and 2"-8" Sch 40 standard wall pipes. "Separate knurling roller" design of drive shaft for convenient replacement changing. The YG12D2 comes with standard support legs, the unit can be set up quickly. The induction motor ensures steady and quiet working.

Technical Specifications

- **Motor:** 1100W induction, 50/60Hz
- **Switch:** ON/OFF heavy duty switch.
- **Spindle Speed:** 24 RPM
- **Capacity:** 2"-12" Sch. 10 steel, stainless steel.
2"-8" Sch. 10/ 40 steel, stainless steel.
- **Weight:** 120 kg

Standard Dies

- Model YG12D2 grooving machine.
- One 2"-6" Schedule 10/40 Roll Set.
- One 8"-12" Schedule 10 Roll Set, 8" Schedule 40.
- Model 658C Pipe Support Stand.

Ordering Information

Catalog No.	Model No.	Description	N.W(kg)
502203	YG12D2	Hydraulic Roll Groover, 110V/60Hz	120
502204	YG12D2	Hydraulic Roll Groover, 220V/50Hz	120
Accessories			
	--	Roll Set for 2"-6"	
	--	Roll Set for 8"-12"	
11002009	658C	Pipe support stand	

Knurling Roller



2"-3"



4"-6"



8"-12"

Roller



2"-6"



8"-12"



Model 658C Pipe Support Stand



Grooving operation

Hydraulic Roll Groover

YG12D



Model YG12D Hydraulic Roll Groover

Product Description

- The Model YG12D hydraulic roll groover, equips updated hydraulic pump, with convenient depth adjusting function, powered by 1100W induction motor, is capable of grooving 1"- 12" Sch 10 and 1"- 8" Sch 40 standard wall pipes. "All-in-one" design for the drive shaft, suitable for heavy duty jobs. The YG12D comes with standard support legs, the unit can be set up quickly. The induction motor ensures steady and quiet working.

Technical Specifications

- Motor: 1100W induction, 50/60Hz
- Switch: ON/OFF heavy duty switch.
- Spindle Speed: 24 RPM
- Capacity: 1"-12" Sch. 10 steel, stainless steel.
1"-8" Sch. 10/ 40 steel, stainless steel.
- Weight: 120 kg

Standard Dies

- Model YG12D grooving machine.
- One 1"-1½" Schedule 10/40 Roll.
- One 2"-6" Schedule 10/40 Roll.
- One 8"-12" Schedule 10 (8"Schedule 40) Roll Set.
- Model 658C Pipe Support Stand.

Ordering Information

Catalog No.	Model No.	Description	N.W(kg)
502305	YG12D	Hydraulic Roll Groover, 110V/60Hz	120
502306	YG12D	Hydraulic Roll Groover, 220V/50Hz	120
Accessories			
	--	Roll Set for 1"-6"	
	--	Roll Set for 8"-12"	
11002009	658C	Pipe support stand	

Roller



1"-1 1/2"

2"-6"

8"-12"

Drive shaft



1"

1 1/4"-1 1/2"

2"-6"

8"-12"



Model 658C Pipe Support Stand

Hydraulic Roll Groover

YG12F



Product Description

• The Model YG12F hydraulic roll groover, equips updated hydraulic pump, with convenient depth adjusting function, powered by 1700W induction motor, is capable of grooving up to 12" Sch 40 standard wall pipes. "Separate knurling roller" design of drive shaft for convenient replacement changing. The YG12F comes with standard support legs, the unit can be set up quickly. The induction motor ensures steady and quiet working.

Technical Specifications

- **Motor:** 1700W induction, 50/60Hz
- **Switch:** ON/OFF heavy duty switch.
- **Spindle Speed:** 24 RPM
- **Capacity:** 2"-12" Sch. 10/ 40 steel, stainless steel.
- **Weight:** 190kg

Standard Equipment

- Model YG12F grooving machine.
- One 2"-6" Schedule 10/40 Roll Set for steel.
- One 8"-12" Schedule 10/40 (8"Schedule 40) Roll Set.
- Model 658C Pipe Support Stand.

Ordering Information

Catalog No.	Model No.	Description	N.W(kg)
502209	YG12F	Hydraulic Roll Groover, 110V/60Hz	190
502210	YG12F	Hydraulic Roll Groover, 220V/50Hz	190
Accessories			
	--	Roll Set for 2"-6"	
	--	Roll Set for 8"-12"	
11002009	658C	Pipe support stand	11.2

Roller



2"-6"

8"-12"

Knurling Roller



2"-3"

4"-6"

8"-12"



Model 658C Pipe Support Stand



Grooving operation