



Tianjin Binhai Yashan Way Import and Export Co.,Ltd  
GALVALUME COIL

Address: 508 Tower B XiangNian Plaza Dongjiang Road, Hexi District, Tianjin China

Tel:+86-22-28299556 Fax:+86-22-28299557 ext 807

Email: [metal@yashanway.com](mailto:metal@yashanway.com)

Skype:yswsteel Tianjin

Contact Person: Jin / Nancy / Sean / Crystal

Website: [www.yswsteel.com](http://www.yswsteel.com)

## Company Information

Tianjin Binhai Yashanway Import and Export Co., Ltd is professional in steel products import and export, located in Tianjin China, relying on the area advantage of Tianjin port, integrating the resource of steel product in North and South market in China available, supplying the most comprehensive best quality product and service. Our company established in 2009, with the

## Enterprise Spirit

Credit, Responsibility, Excellence

## Enterprise Conception

1. Helping customers to break a vast ground in the local market and helping customers to go from strength to strength
2. Take the customers' requirement as core, regards products' quality as the life, serve customers as god, do our best to provide the comprehensive product and best service to customers all over the world.

## Enterprise Mission

Establish a professional steel product supermarket for all over the world, make all customers can get the right product and service from our company.

## Product Catalog

### 1. Steel pipe / Steel tube

Welded / Seamless / Stainless / Galvanized / API

### 2. Steel coil

Galvanized / PPGI / PPGL / Aluminium / Stainless / Steel plate

### 3. Steel beam

H beam / I beam / Ms angle / U channel / C channel / Deformed channel

### 4. Fitting

Elbow / Tee / Cross / Movable joint / Bu core / Reducer / Pipe cap / Choke plug / Inside the wire / Outside the wire / Turned-over edge / Increaser

### 5. Special steel product

Ellipse steel pipe / Tapered steel tube / Hexagon tube / Octagonal tube

# Galvalume/Zinc Aluminized Coil

## Application and Features

Galvalume / Zinc aluminium coil with good formability and corrosion resistance, the products can be used for interior and exterior cover panels and structural parts in construction, appliances which require formability and corrosion resistance.

### Grades:

DC(X)51D+AZ,DC(X)52D+AZ,DC(X)53D+AZ,S220GD+AZ,S250GD+AZ,S280GD+AZ,S320GD+AZ,S350GD+AZ,CS,CSB,FSA,FSB, SS230, SS255, SS275, SS340, SGCC, SGCD, SGC340, SGC400, SGC440, S390GD+AZ, S450GD+AZ

**Standards:** GB/T2518, EN10346, ASTM A653/A653M, JIS G3302, 2011JX(15)

**Thickness:** 0.18~1.5(mm)

**Equal-Thickness Coat:** Z60-Z450

**Different-Thickness Coat:** 30/40; 40/60; 40/100

**Coating Finish:** Regular spangle, minimum spangle, zero spangle

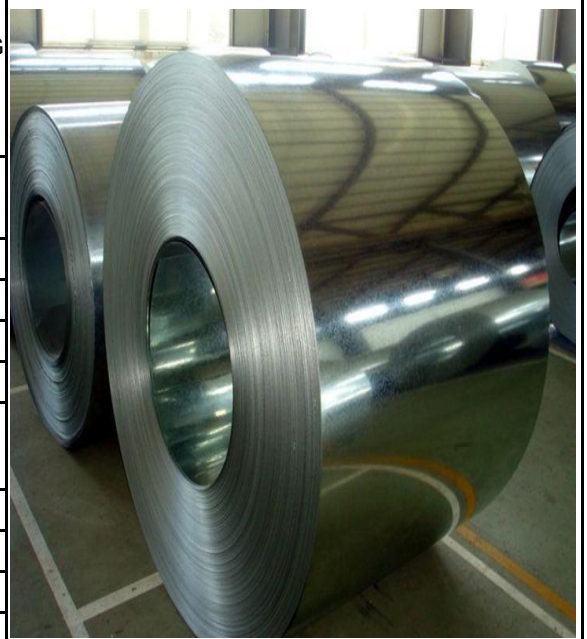
**Surface Treatment:** Oiling, passivation, passivation + Oiling, antifinger print, Cr free passivation, Cr free passivation + Oiling, Cr free antifinger print

**Width:** 40~500(mm)

**FOB Port:** XINGANG ,TIANJIN CITY ,CHINA

**MOQ:** 50~100MT

**Packing :** Standard for Export



## Galvalume/Zinc Aluminized Coil Show Item



## Galvalume/Zinc Aluminized Coil Product Line & Equipment



TIANJIN BINHAI YASHANWAY IMPORT AND EXPORT CO., LTD TEL:+86-22-28299556  
EMAIL:metal@yashanway.com



## Trade & Market


|  |   |
|--|---|
| Main Market:                           | Hong Kong, Macau and Taiwan, Japan, North America, South America, Western Europe, Eastern Europe, East Asia, The Middle East, Africa, The globe |
| Nearest port for product export:       | XINGANG CHINA, SHANGHAI CHINA, RIZHAO CHINA, NINGBO CHINA   |
| Delivery clauses under the trade mode: | FOB, CFR, CIF, EXW, Express Delivery  |
| Acceptable currency of payment:        | CNY , U.S. dollar   |
| Acceptable payment methods:            | T/T, L/C  |
| Language ability:                      | 简体中文, English, Français, 日語, 한국 의 , العربية, Deutsch, Español, Italiano, Português, Русский, Türk   |

## Galvalume/Zinc Aluminized Coil Quality Management

|  |
|--|
| Insist on high quality, service on customer.   |
| We firmly believe strict standard of Angle Bar is the foundation of success.                             |
| Our company set up Impeccable product examination system with advanced inspection facilities.            |
| First class quality management concept and high quality employees to guarantee the quality of Angle Bar. |
| Develop the market. Improve the innovation. Look into customer request.                                  |
| Keep self-challenging. To outdo ourselves. Do the best.  |

## Location of Suppliers

We have several suppliers with good relationship in mainland of china.

| LOCATION  | QUANTITY |  |
|-----------|----------|--|
| TIANJIN   | 10       |  |
| HEBEI     | 14       |  |
| SHANDONG  | 13       |  |
| JIANGSU   | 10       |  |
| HENAN     | 5        |  |
| GUANGZHOU | 2        |  |

|  |   |
|--|---|
|  | <h3>Tianjin Binhai Yashan Way Import and Export Co.,Ltd</h3>                      |
|  | Address: 508 Tower B XiangNian Plaza Dongjiang Road, Hexi District, Tianjin China |
|  | Tel: +86-22-28299556  |
|  | Fax: +86-22-28299557 ext 807  |
|  | Email: metal@yashanway.com  |
|  | Skype: yswsteel Tianjin Skype: yanling1029  |
|  | Contact Person: Jin / Nancy / Sean / Crystal                                      |
| Website: www.yswsteel.com  |   |