



Tianjin Binhai Yashan Way Import and Export Co.,Ltd
Address: 508 Tower B XiangNian Plaza Dongjiang Road, Hexi District, Tianjin China
Tel:+86-22-28299556 Fax:+86-22-28299557 ext 807
Email: metal@yashanway.com
Skype:yswsteel Tianjin
Contact Person: Jin / Nancy / Sean / Crystal
Website: www.yswsteel.com

Company Infomation

Tianjin Binhai Yashanway Import and Export Co.,Ltd is professional in steel products import and export, located in Tianjin China, relying on the area advantage of Tianjin port, integrating the resource of steel product in North and South market in China availably, supplying the most comprehensive best quality product and service. Our company establish on 2009, with the

Enterprise Spirit

Credit, Responsibility, Excellence

Enterprise Conception

1. Helping customers to break a vast ground in the local market and helping customers to go from strength to strength
2. Take the customers' requirement as core, regards products' quality as the life, serve customers as god, do our best to provide the comprehensive product and best service to customers all over the world.

Enterprise Mission

Establish a professional steel product supermarket for all over the world, make all customers can get the right product and service from our company.

Product Catalog

1. Steel pipe / Steel tube
Welded / Seamless / Stainless / Galvanized / API
2. Steel coil
Galvanized / PPGI / PPGL / Aluminium / Stainless / Steel plate
3. Steel beam
H beam / I beam / Ms angle / U channel / C channle / Deformed channel
4. Fitting
Elbow / Tee / Cross / Movable joint / Bu core / Reducer / Pipe cap / Choke plug / Inside the wire / Outside the wire / Turned-over edge / Increaser
5. Special steel product
Ellipse steel pipe / Tapered steel tube / Hexagon tube / Octagonal tube

Prepainted Galvalume Steel Coil

Brief introduction

Prepainted galvalume steel coil / sheet is coated with organic layer, which provides higher anti-corrosion property and a longer lifespan than that of galvanized steel sheets.

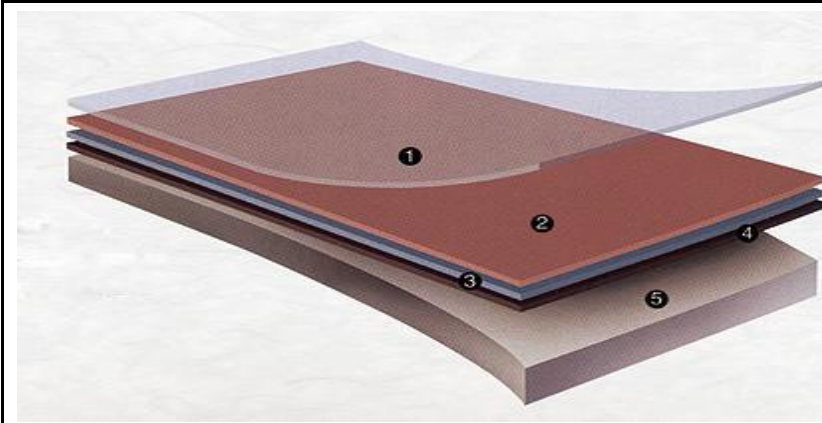
The base metals for prepainted galvalume steel coil / sheet consist of coldrolled, HDG electro-galvanized and hot-dip alu-zinc coated. The finish coats of prepainted steel sheets can be classified into groups as follows: polyester, silicon modified polyesters, polyvinylidene fluoride, high-durability polyester, etc.

The production process has evolved from one-coating-and-one-baking to double-coating-and-double-baking, and even three-coating-and-three-baking.

The color of the prepainted galvalume steel coil / sheet has a very wide selection, like orange, cream-colored, dark sky blue, sea blue, bright red, brick red, ivory white, porcelain blue, etc.

The prepainted steel sheets can also be classified into groups by their surface textures, namely regular prepainted sheets, embossed sheets and printed sheets.

The prepainted galvalume steel coil / sheet are mainly provided for various commercial purposes covering architectural construction, electrical household appliances, transportation, etc.



Coating Structure:

- ① Fine coating
- ② The beginning of coating
- ③ Chemical conversion layer
- ④ Zinc coating
- ⑤ Cold layer

Grades: DC(X)51D+Z, DC(X)52D+Z, DC(X)53D+Z, S220GD+Z, S250GD+Z, S280GD+Z, S320GD+Z, S350GD+Z, CS A, CS B, FS A, FS B, SS230, SS255, SS275, SS340, SGCC, SGCD, SGC340, SGC400, SGC440, S390GD+Z, S450GD+Z

Thickness: 0.35~2.0(mm)

Nominal width: 700~1550(mm)

Nominal cut length: Coil/1000~4000(mm)

Coating System: Two-sided 2C2B (2 Coat 2 Bake) coating system is used.

Coating: PVC, PE

Colour: Ral Colours

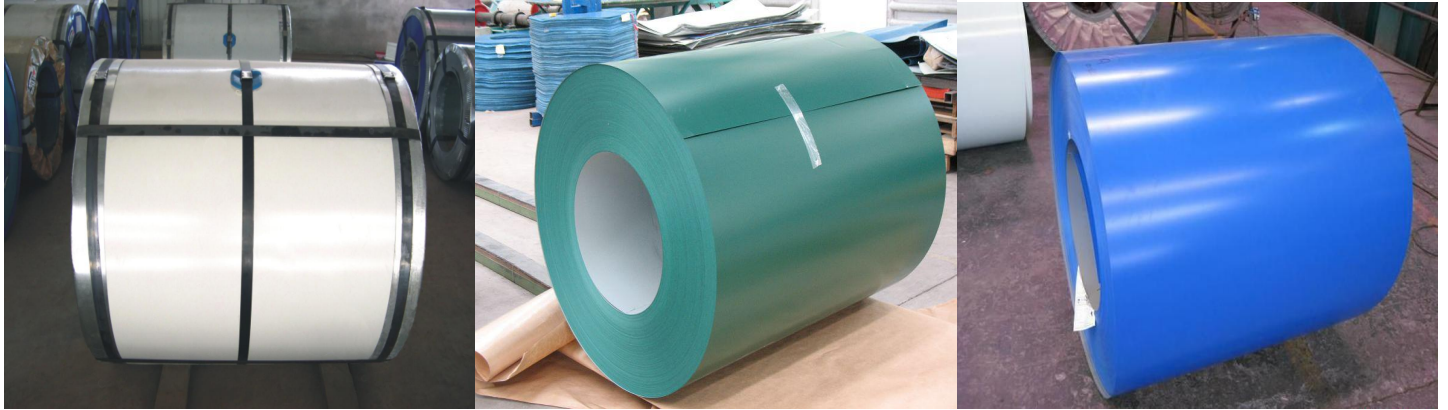
ETD: 30DAYS FATRE RECEIVE THE PREPAYMENT

FOB Port: XINGANG ,TIANJIN CITY ,CHINA

MOQ: 50~100MT

Packing : Standard for Export

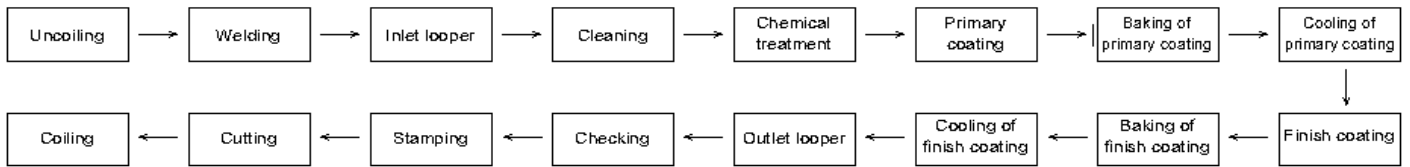
Prepainted Steel Show Item



Prepainted Steel Colour

RAL 1000	RAL 1018	RAL 2003	RAL 3011	RAL 4004	RAL 5009
RAL 1001	RAL 1019	RAL 2004	RAL 3012	RAL 4005	RAL 5010
RAL 1002	RAL 1020	RAL 2008	RAL 3013	RAL 4006	RAL 5011
RAL 1003	RAL 1021	RAL 2009	RAL 3014	RAL 4007	RAL 5012
RAL 1004	RAL 1023	RAL 2010	RAL 3015	RAL 4008	RAL 5013
RAL 1005	RAL 1024	RAL 2011	RAL 3016	RAL 4009	RAL 5014
RAL 1006	RAL 1027	RAL 2012	RAL 3017	RAL 4010	RAL 5015
RAL 1007	RAL 1028	RAL 3000	RAL 3018	RAL 5000	RAL 5017
RAL 1011	RAL 1032	RAL 3001	RAL 3020	RAL 5001	RAL 5018
RAL 1012	RAL 1033	RAL 3002	RAL 3022	RAL 5002	RAL 5019
RAL 1013	RAL 1034	RAL 3003	RAL 3027	RAL 5003	RAL 5020
RAL 1014	RAL 1037	RAL 3004	RAL 3031	RAL 5004	RAL 5021
RAL 1015	RAL 2000	RAL 3005	RAL 4001	RAL 5005	RAL 5022
RAL 1016	RAL 2001	RAL 3007	RAL 4002	RAL 5007	RAL 5023
RAL 1017	RAL 2002	RAL 3009	RAL 4003	RAL 5008	RAL 5024

Prepainted Steel Product Line & Equipment



Trade & Market

Main Market:	Hong Kong, Macau and Taiwan, Japan, North America, South America, Western Europe, Eastern Europe, East Asia, The Middle East, Africa, The globe
Nearest port for product export:	XINGANG CHINA, SHANGHAI CHINA, RIZHAO CHINA, NINGBO CHINA
Delivery clauses under the trade	FOB, CFR, CIF, EXW, Express Delivery
Acceptable currency of	CNY , U.S. dollar
Acceptable payment	T/T, L/C
Language ability:	简体中文, English, Français, 日語, 한국 의 , العربية, Deutsch, Español, Italiano, Português, Русский, Türk



TIANJIN BINHAI YASHANWAY IMPORT AND EXPORT CO., LTD EMAIL:METAL@YASHANWAY.COM

TEL:+86-22-28299556

Quality Management

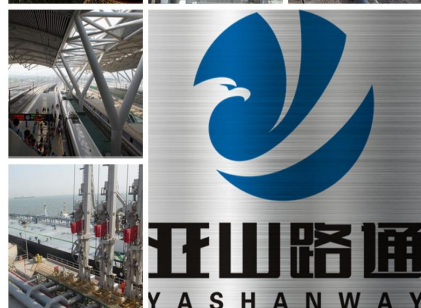
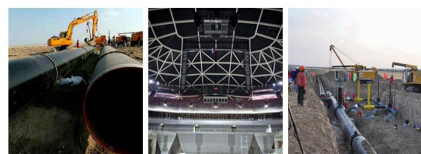
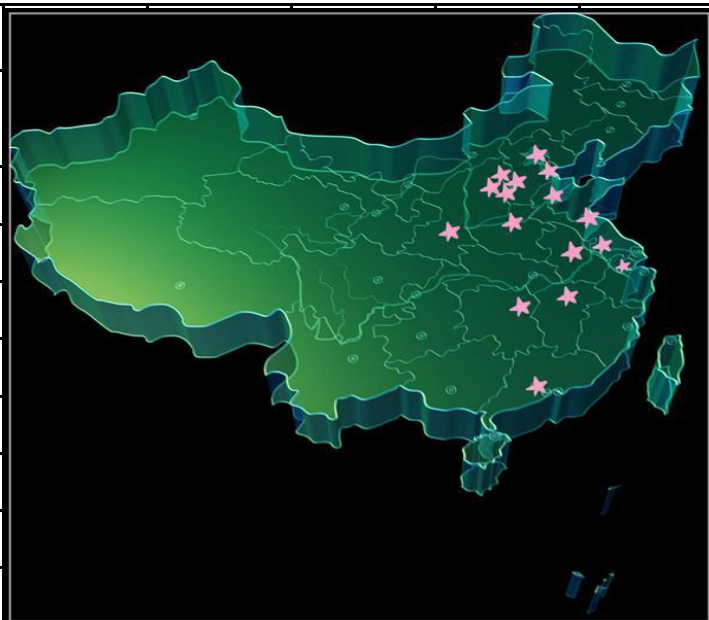
1. Insist on high quality, service on customer.
2. We firmly believe strict standard of Prepainted Steel is the foundation of success.
3. Our company set up Impeccable product examination system with advanced inspection facilities of Prepainted Steel.
4. First class quality management concepet and high quality employees to guarantee the quality of each product.
5. Develop the market. Improve the innovation. Look into customer request.
6. Keep self-challenging. To outdo ourselves. Do the best.



Location of Suppliers

We have several suppliers with good relationship in mainland of china.

LOCATION	QUANTITY
TIANJIN	10
HEBEI	14
SHANDONG	13
JIANGSU	10
HENAN	5
GUANGZHOU	2
Totally	54



Tianjin Binhai Yashan Way Import and Export Co.,Ltd

Address: 508 Tower B XiangNian Plaza Dongjiang Road, Hexi District, Tianjin China

Tel:+86-22-28299556

Fax:+86-22-28299557 ext 807

Email: metal@yashanway.com

Skype:yswsteel Tianjin Skype: yanling1029

Contact Person: Jin / Nancy / Sean / Crystal

Website: www.yswsteel.com