

Product	Hot rolled steel plate
Materials	Q235, Q345,SS400,A36,S235JR, S235,S355, S275JR ,S355JR,St37-2, St52,etc
Length	2000mm or as your requirement
Width	1000-2000mm as your requirement
Thickness	0.3-3mm(hot rolled) 3-100mm(hot rolled)
Standard	JIS, AISI, ASTM,GB
Usage	steel structures,bridge construction,buildings,engineering machinery, vehicle,boiler,container,vessels,machine part,etc
Packing	Bundle, loose and bare or according customer inquirement,in 20' or 40' container
Payment	Small quantity T/T , 30% in advance , 70% after receiving the copy of B/L .Irrevocable L/C at sight.
Delivery Time	About 15 days after received the deposit of T/T or get the L/C.
Trade terms	FOB/CFR/CIF,According to clients requirements







JIANG Q235B

GB/T3274-2007

6X2000X10000

78798 D(B)

www.topsinosteel.com



JIGANG

Q235B

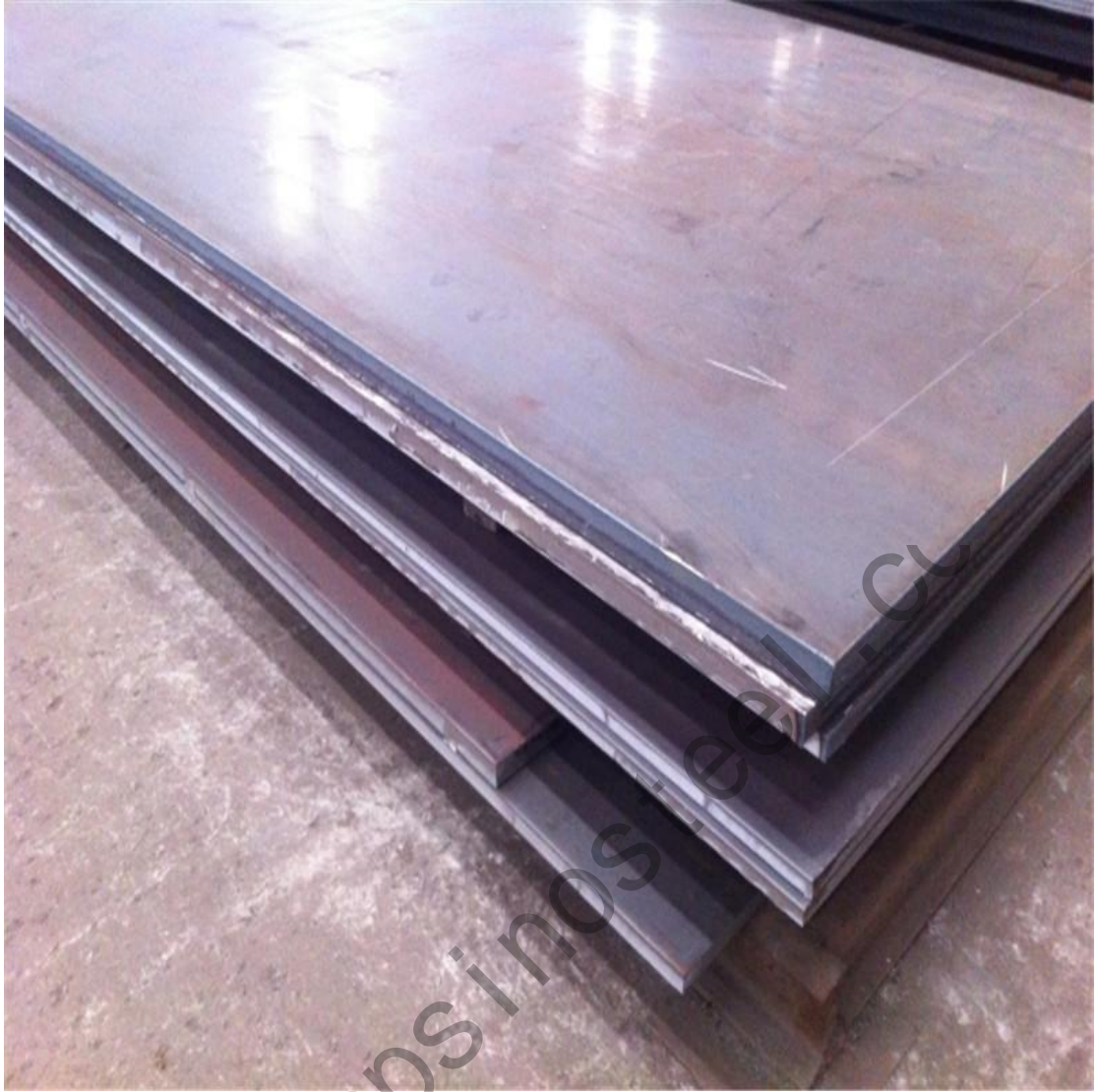
GB/T3274-2007

12X2000X10000

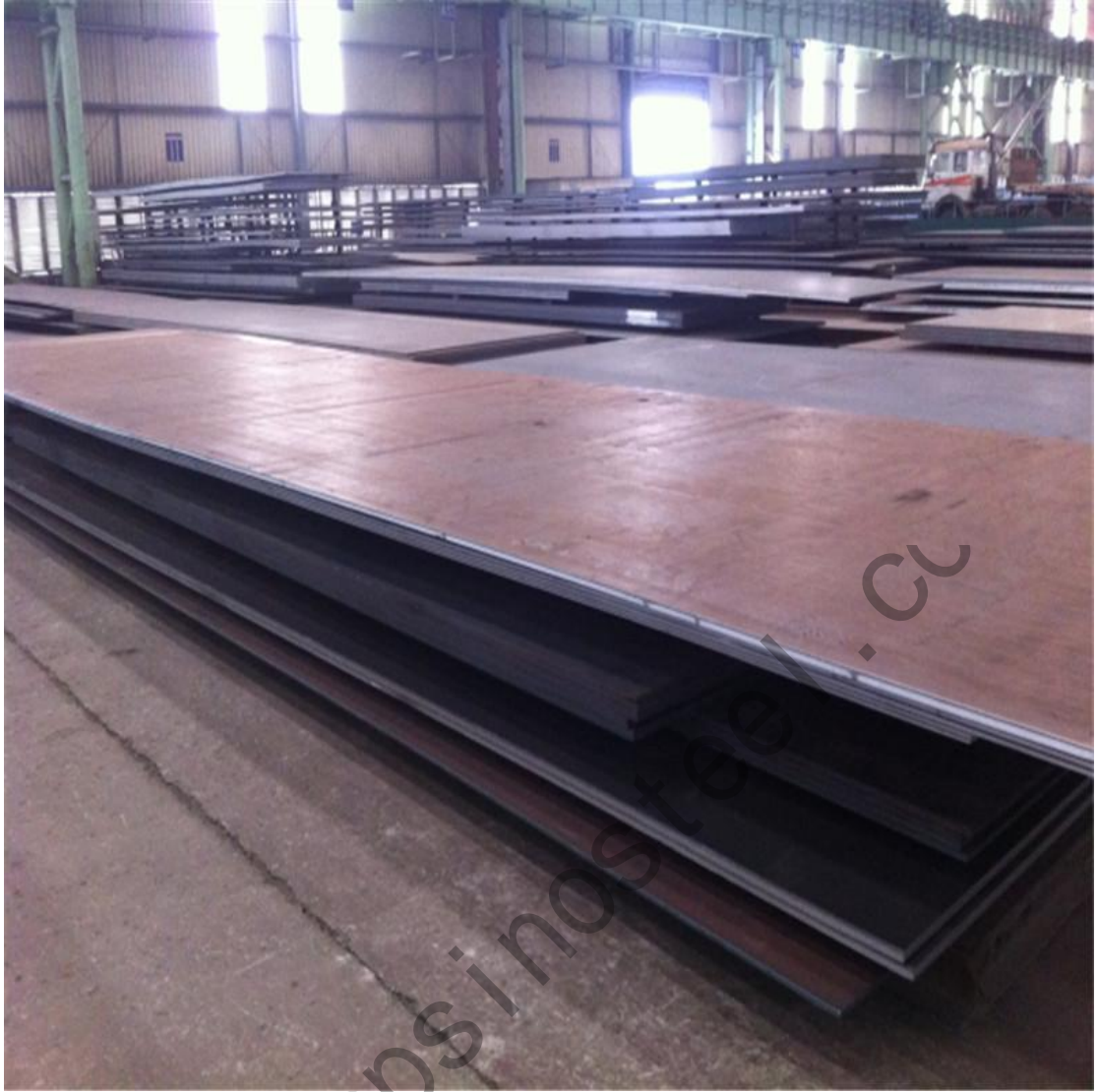
71144

C01

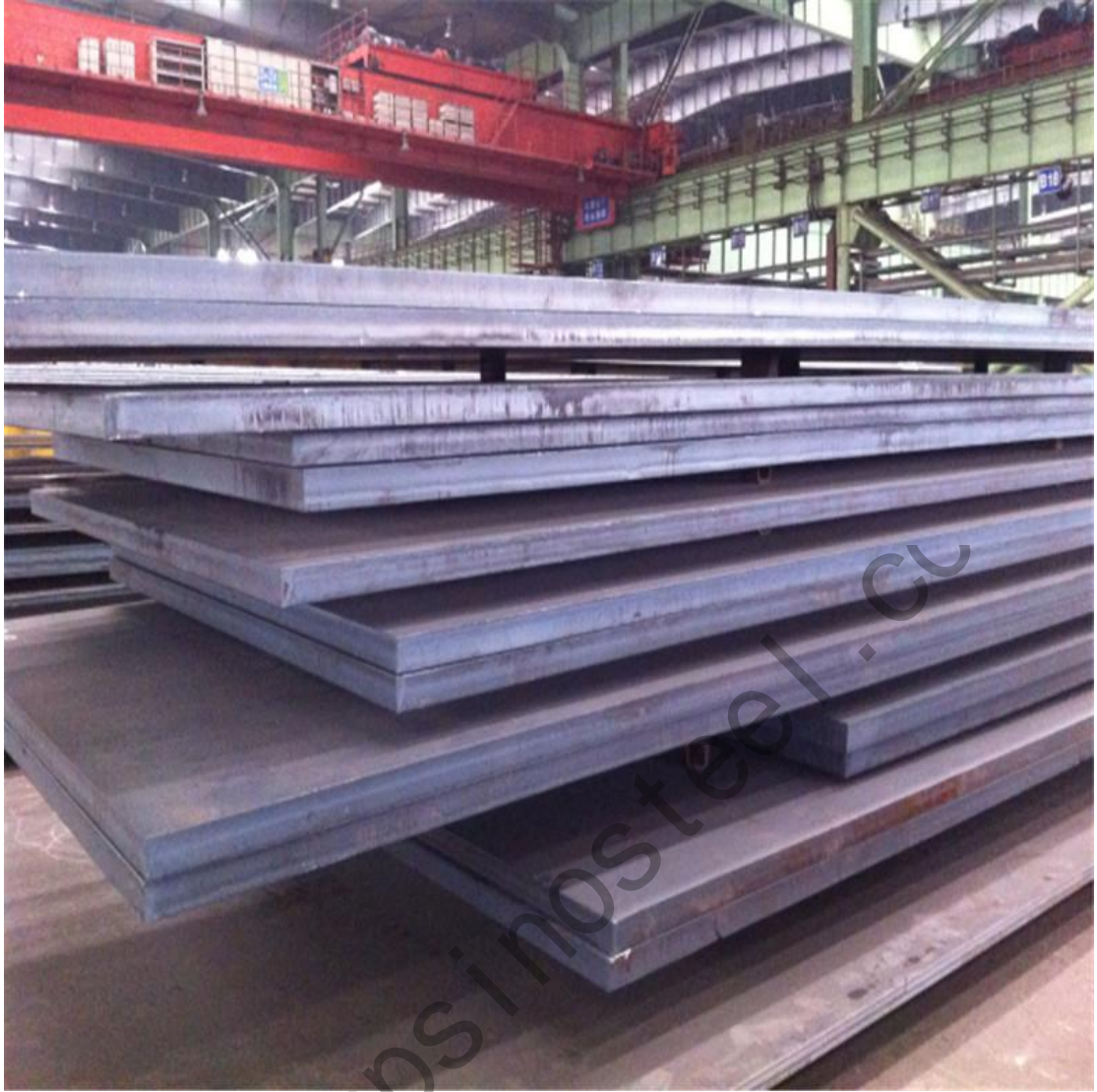
www.topsinosteel.com



www.topsinos.com



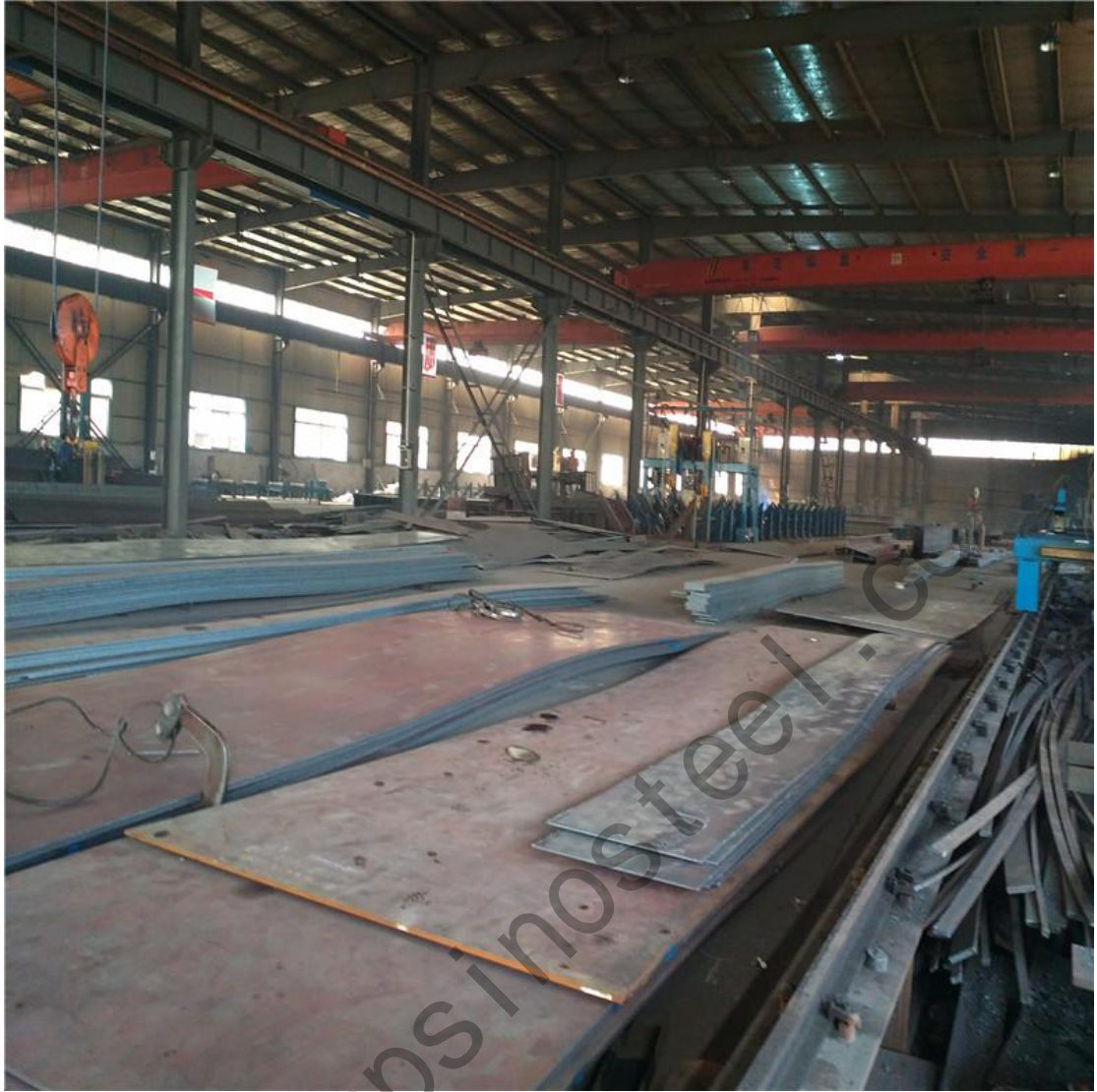
www.topsinossteel.com



www.topsinsteel.com



www.topsinosteel.com



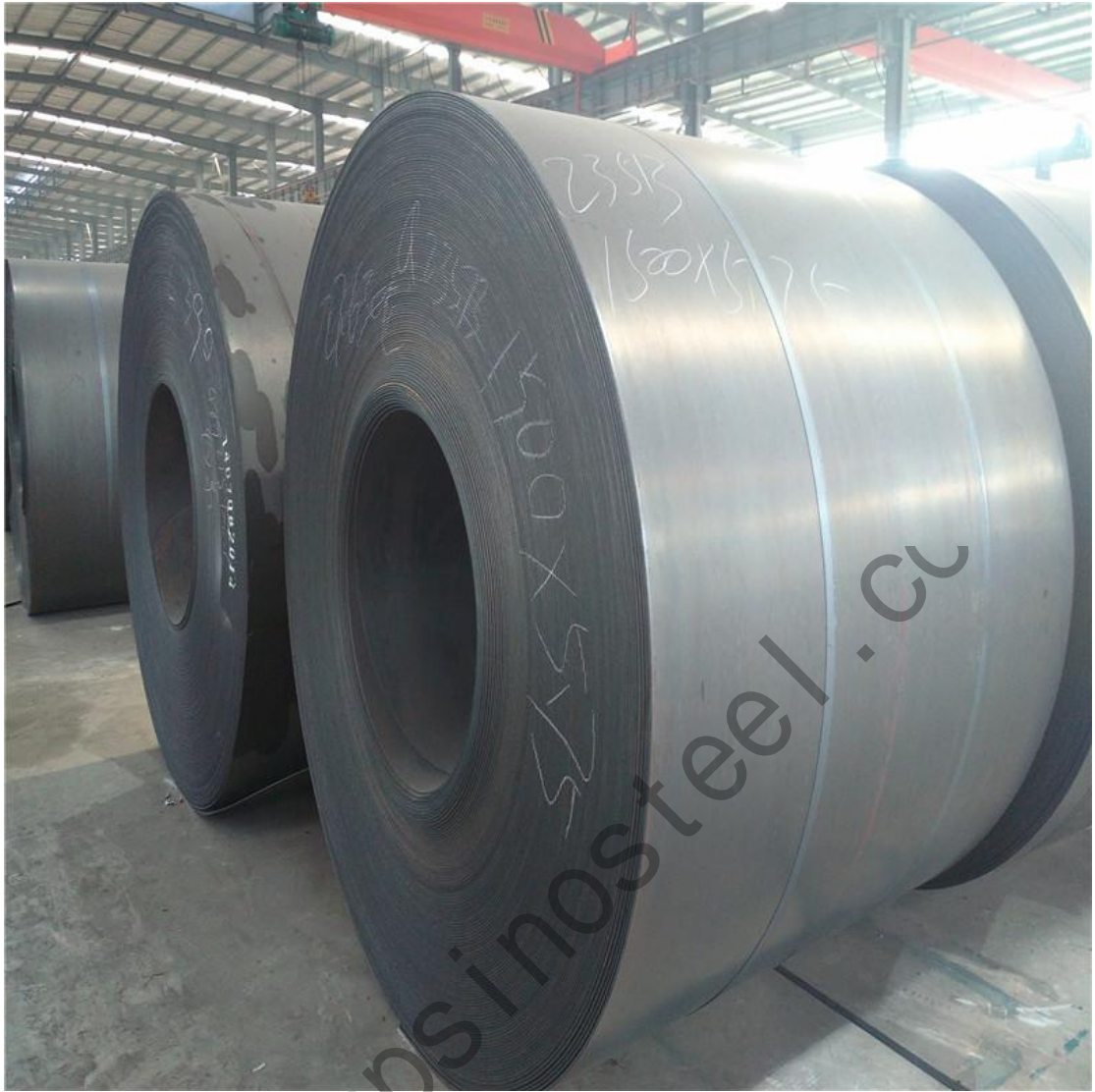
www.topsinosteel.com



www.topinfo.com



www.tops100.com



www.topsinosteel.com



www.topsinosteel.com



www.topsinosteel.com



www.topsinosteel.com