



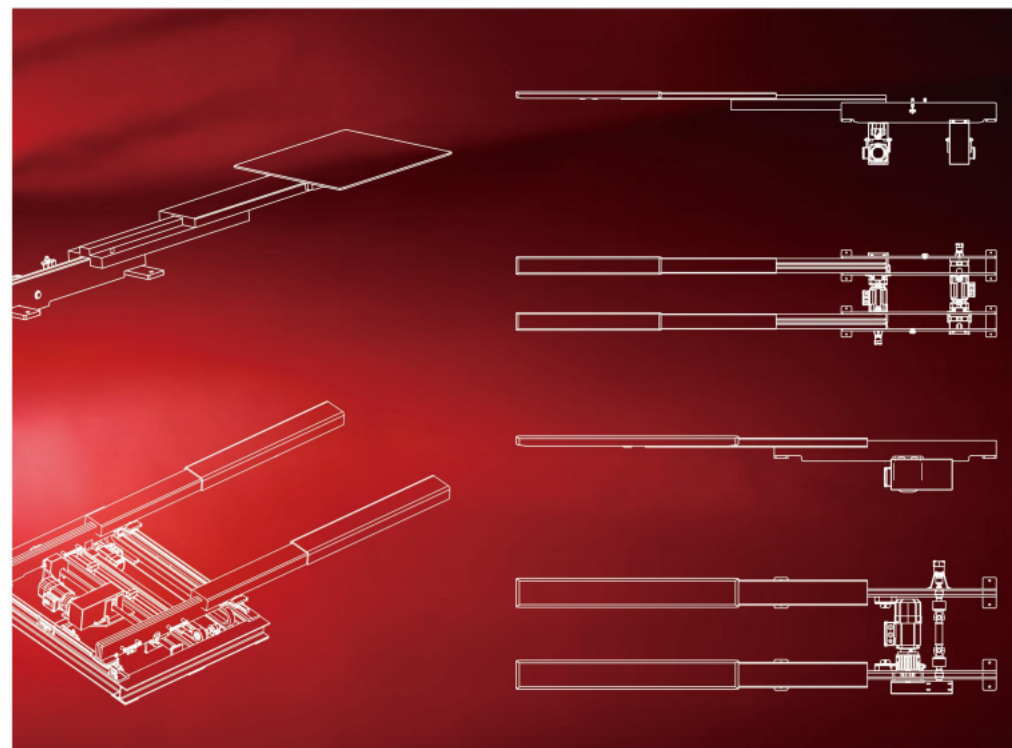
Telescopic Fork Series

伸缩叉系列

英普锐物流装备（嘉兴）有限公司
Improve Logistics Equipment Co., Ltd. (Jiaxing)



英普锐物流装备(嘉兴)有限公司
Improve Logistics Equipment Co., Ltd.(Jiaxing)
地址：浙江省嘉兴市秀洲区王江泾镇闻川路1208号
Add.: No. 1208, Wenchuan Rd., Xiuzhou District, Jiaxing, China
电话/Tel. : +86-19805784777
邮箱/E-mail : gr_improve@163.com
网址/Web : ww.improvechina.com



About Us

Improve Logistics Equipment Co., Ltd. (Jiaxing) focuses on the research and development, design, manufacturing and service of telescopic forks and related logistics handling equipment. The company is located in Nanhu, Jiaxing, with a professional technical team and strong processing capabilities, committed to provide customers with professional technical services and high reliability, cost-effective telescopic fork.

英普锐物流装备(嘉兴)有限公司专注于伸缩货叉及相关物流搬运设备的研发、设计、制造及服务。公司位于嘉兴市南湖区,拥有专业的技术团队及强大的加工实力,立志于为客户提供专业的技术服务及高可靠性、高性价比的伸缩货叉。

High reliability

高可靠性

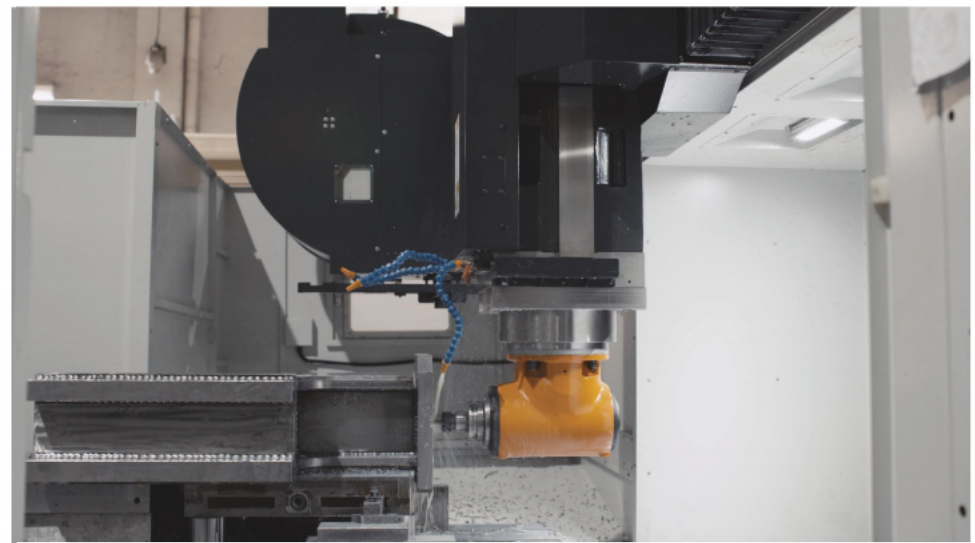
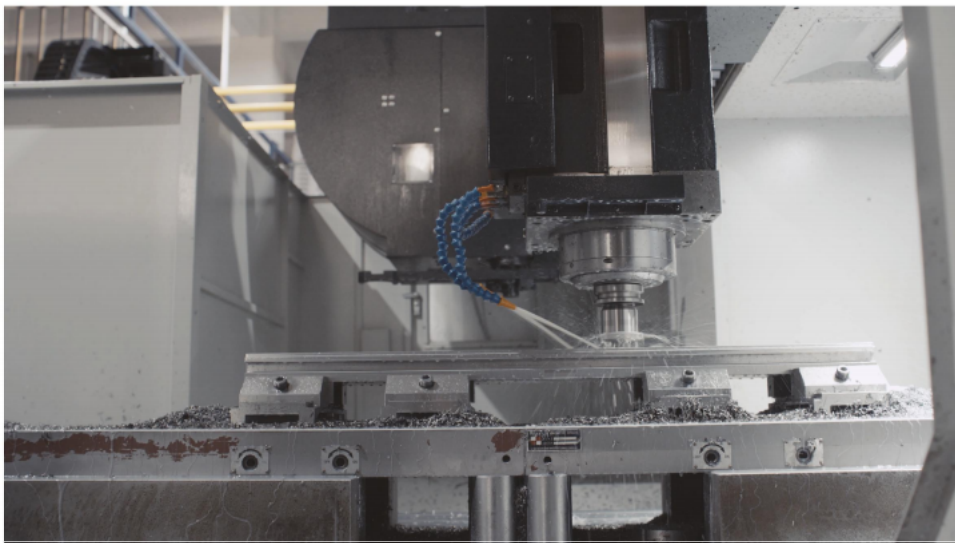
High cost performance

高性价比

Support for non-standard customization

支持非标定制





SINGLE-DEEP TELESCOPIC FORK FOR STANDARD PALLETS



- Tailored for standard pallet access;
- Mainly used in three-dimensional warehouse, loading on the stacker,
- Handling of standard pallets;
- Its carrying capacity and cross-section size perfectly match standard pallets.

Technical Parameter

	Model1	Model2	Model3	Model4
Section Size	170X60	170X65	170X70	Customized
Loading	200-2000kg			
Fork Length	600-3000mm			
Stroke Length	Customized			
Speed	Loaded: 60m/min, Unloaded: 120m/min			
Acceleration	Loaded: 1m/s ² , Unloaded: 2m/s ²			
Positional Accuracy	±3mm			

Technical Feature

- Using special high-quality alloy steel, effectively reduce the section size and the weight of the whole machine, larger load bearing, longer service life;
- Optimized design of section size, smaller deflection;
- Mature design, verified by a large number of projects, with ultra-high reliability;
- Adopt the combination drive mode of grinding gear and high-strength chain, the positioning accuracy can reach ±3mm;
- Suitable for cold storage or high temperature environment;
- Optional automatic lubrication device.

DOUBLE-DEEP TELESCOPIC FORK FOR STANDARD PALLETS



- Tailored for standard pallet access;
- Mainly used in three-dimensional warehouse, loading on the stacker,
- Handling of standard pallets;
- Can access double deep positions;
- Its bearing capacity and cross-section size perfectly match the standard pallet;
- Compared with the single motor double telescopic fork, save the shelf cost.

Technical Parameter

	Model1	Model2	Model3	Model4	Model5	Others
Section Size	170X65X170	70X70X175	170X75X180	80X80X180	220X100X220	Customized
Loading	200-2000kg					
Fork Length	1000-1700mm					
Stroke Length	Customized					
Speed	Loaded: 60m/min, Unloaded: 120m/min					
Acceleration	Loaded: 1m/s ² , Unloaded: 2m/s ²					
Positional Accuracy	±3mm					

Technical Feature

- Using special high-quality alloy steel, effectively reduce the section size and the weight of the whole machine, larger load bearing, longer service life;
- Optimized design of section size, smaller deflection;
- Mature design, verified by a large number of projects, with ultra-high reliability;
- Adopt the combination drive mode of grinding gear and high-strength chain, the positioning accuracy can reach ±3mm;
- Suitable for cold storage environment;
- Optional automatic lubrication device.

SINGLE-MOTOR DOUBLE-DEEP TELESCOPIC FORK FOR STANDARD PALLETS



- Tailored for standard pallet access;
- Mainly used in three-dimensional warehouse , loading on the stacker,
- Handling of standard pallets;
- Can access two deep positions;
- Its bearing capacity and cross-section size perfectly match the standard pallet;
- Lower cost compared with the double motor double deep telescopic fork

Technical Parameter

	Model1	Model2	Others
Section Size	180X65X160	180X70X165	Customized
Loading	200-1800kg		
Fork Length	800-2000mm		
Stroke Length	Customized		
Speed	Loaded: 60m/min, Unloaded: 120m/min		
Acceleration	Loaded: 1m/s ² , Unloaded: 2m/s ²		
Positional Accuracy	±3mm		

Technical Feature

- Using special high-quality alloy steel, effectively reduce the section size and the weight of the whole machine, larger load bearing, longer service life;
- Optimized design of section size, smaller deflection;
- Mature design, verified by a large number of projects, with ultra-high reliability;
- Adopt the combination drive mode of grinding gear and high-strength chain, the positioning accuracy can reach ±3mm;
- Suitable for cold storage environment;
- Optional automatic lubrication device.

TELESCOPIC FORK FOR AUTOMATIC PRODUCTION LINES



- Customized for cargo moving capacity is available;
- It is mainly used in automatic production lines, such as the load transfer of skid between two parallel production lines on automobile production lines;
- It is usually loaded on the lifting device to handle the goods with the lifting action, which is suitable for large-size goods and can meet the material handling of large loads and long strokes

Technical Parameter

	Model1	Model2	Model3	Model4	Others
Section Size	180X80	180X100	200X100	220X100	Customized
Loading	200-2000kg				
Fork Length	800-4000mm				
Stroke Length	Customized				
Speed	Loaded: 60m/min, Unloaded: 120m/min				
Acceleration	Loaded: 1m/s ² , Unloaded: 2m/s ²				
Positional Accuracy	±3mm				

Technical Feature

- Using special high-quality alloy steel, effectively reduce the section size and the weight of the whole machine, larger load bearing, longer service life;
- Optimized design of section size, smaller deflection;
- Mature design, verified by a large number of projects, with ultra-high reliability;
- Adopt the combination drive mode of grinding gear and high-strength chain, the positioning accuracy can reach ±3mm;
- Optional automatic lubrication device.
- Optional micro-lifting and descending device;
- Optional fork spacing adjustment device;
- Positioning locking device can be selected to improve positioning stability;
- Suitable for cold storage or high temperature environment;

SINGLE-DEEP TELESCOPIC FORK FOR LIGHT DUTY



- Customized for the transfer capacity of the turnover box or the material box;
- Mainly used in three-dimensional warehouse, loading on the stacker,
- The turnover box or container handling operations;
- Can also be loaded on AGV or RGV trolley.

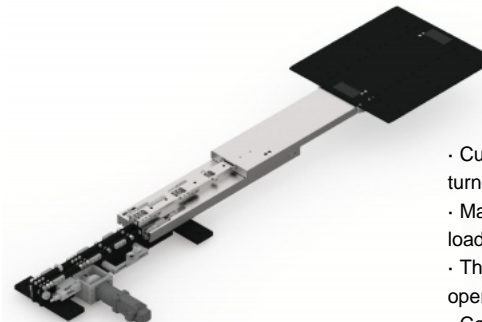
Technical Parameter

	Model1	Model2	Model3	Others
Section Size	100X55	122X40	175X40	Customized
Loading	5-300kg			
Fork Length	500-1600mm			
Stroke Length	Customized			
Speed	Loaded: 60m/min, Unloaded: 120m/min			
Acceleration	Loaded: 1.0m/s ² , Unloaded: 2.0m/s ²			
Positional Accuracy	±3mm			

Technical Feature

- Using special high-quality alloy steel, effectively reduce the section size and the weight of the whole machine, larger load bearing, longer service life;
- Optimized design of section size, smaller deflection;
- Mature design, verified by a large number of projects, with ultra-high reliability;
- Adopt the combination drive mode of grinding gear and high-strength chain, the positioning accuracy can reach ±3mm;
- Up to 60m/min loading speed and 1m/s² loading acceleration to meet the needs of high-speed storage;
- Suitable for cold storage or high temperature environment;
- Optional automatic lubrication device;
- The fork body can be made of aluminum alloy to reduce the weight of the whole machine.

DOUBLE-DEEP TELESCOPIC FORK FOR LIGHT DUTY



- Customized for the transfer capacity of the turnover box or the material box;
- Mainly used in three-dimensional warehouse, loading on the stacker,
- The turnover box or container handling operations;
- Can access double-deep turnover box or container

Technical Parameter

	Model1	Model2	Model3	Others
Section Size	170X40X90	210X40X70	210X40X80	Customized
Loading	5-300kg			
Fork Length	600-1600mm			
Stroke Length	Customized			
Speed	Loaded: 60m/min, Unloaded: 120m/min			
Acceleration	Loaded: 1.0m/s ² , Unloaded: 2.0m/s ²			
Positional Accuracy	±3mm			

Technical Feature

- Using special high-quality alloy steel, effectively reduce the section size and the weight of the whole machine, larger load bearing, longer service life;
- Optimized design of section size, smaller deflection;
- Mature design, verified by a large number of projects, with ultra-high reliability;
- Adopt the combination drive mode of grinding gear and high-strength chain, the positioning accuracy can reach ±3mm;
- Up to 60m/min loading speed and 1m/s² loading acceleration to meet the needs of high-speed storage;
- Suitable for cold storage or high temperature environment;
- Optional automatic lubrication device;
- The fork body can be made of aluminum alloy to reduce the weight of the whole machine.

SINGLE-DEEP TELESCOPIC FORK FOR HEAVY DUTY



- Customized for heavy cargo moving capacity;
- Mainly used in heavy industry, such as iron and steel manufacturers internal logistics load transfer; Loaded on heavy stackers or lifts;
- Suitable for high temperature environment.

Technical Parameter

	Model1	Model2	Model3	Model4	Others
Section Size	210X100	240X120	290X160	360X220	Customized
Loading	5000-15000kg				
Fork Length	800-4000mm				
Stroke Length	Customized				
Speed	Loaded: 60m/min, Unloaded: 120m/min				
Acceleration	Loaded: 1m/s ² , Unloaded: 2m/s ²				
Positional Accuracy	±3mm				

Technical Feature

- Using special high-quality alloy steel, effectively reduce the section size and the weight of the whole machine, larger load bearing, longer service life;
- Optimized design of section size, smaller deflection;
- Mature design, verified by a large number of projects, with ultra-high reliability;
- Adopt the combination drive mode of grinding gear and high-strength chain, the positioning accuracy can reach ± 3mm;
- Optional automatic lubrication device.
- Optional micro-lifting and descending device;
- Optional fork spacing adjustment device;
- Positioning locking device can be selected to improve positioning stability;
- Suitable for cold storage or high temperature environment;
- Larger load can be customized.

DOUBLE-DEEP TELESCOPIC FORK FOR HEAVY DUTY



- Customized fork series for heavy cargo moving capacity;
- Mainly used in three-dimensional warehouse, loading on heavy stacker;
- Can access double-deep cargo.

Technical Parameter

	Model1	Others
Section Size	220X100X220	Customized
Loading	1500-3000kg	
Fork Length	800-2000mm	
Stroke Length	Customized	
Speed	Loaded: 60m/min, Unloaded: 120m/min	
Acceleration	Loaded: 1m/s ² , Unloaded: 2m/s ²	
Positional Accuracy	±3mm	

Technical Feature

- Using special high-quality alloy steel, effectively reduce the section size and the weight of the whole machine, larger load bearing, longer service life;
- Optimized design of section size, smaller deflection;
- Mature design, verified by a large number of projects, with ultra-high reliability;
- Adopt the combination drive mode of grinding gear and high-strength chain, the positioning accuracy can reach ± 3mm;
- Optional automatic lubrication device.
- Optional fork spacing adjustment device;
- Suitable for cold storage or high temperature environment;
- Larger load can be customized.

ECCENTRIC LIFTING PLATFORM



- Configured in the lower part of the telescopic fork, with a certain lifting stroke (generally within 300mm), with the telescopic fork to complete the load transfer of goods;
- It is mainly used in automated production lines, such as the load transfer of skid between two parallel production lines on automobile production lines.

Technical Parameter

Matching Fork	Random Model
Loading	2000kg
Platform Size	Max.2000X2000mm
Lifting Stroke	50-300mm
Lifting Time	about 2-4s
Positional Accuracy	±3mm

Technical Feature

- Mature design, verified by a large number of projects, with ultra-high reliability;
- Lower overall height;
- Eccentric wheel lifting, acceleration and deceleration more smooth;
- Can match any type and length of fork;
- Suitable for cold storage or high temperature environment;
- Optional automatic lubrication device;
- Larger load or size can be customized.

SCISSOR-TYPE LIFTING PLATFORM



- Configured in the lower part of the telescopic fork, and the whole machine has a lower closing height and a larger lifting stroke (up to 1500mm).
- It is mainly used when the goods need to be lifted to a certain height.

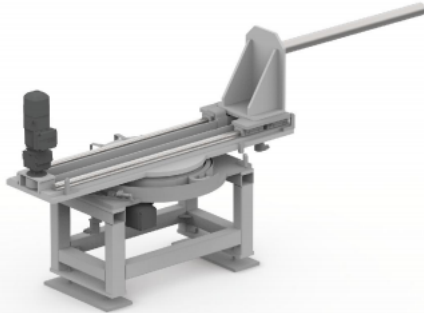
Technical Parameter

Matching Fork	Random Model
Loading	2000kg
Platform Size	Max.2000X2000mm
Lifting Stroke	Max. 1500mm
Lifting Speed	200mm/s
Positional Accuracy	±3mm

Technical Feature

- Mature design, verified by a large number of projects, with ultra-high reliability;
- Lower overall height;
- Higher lifting stroke;
- Can match any type and length of fork;
- Suitable for cold storage or high temperature environment;
- Optional automatic lubrication device;
- Larger load or size can be customized.

ROTATING MECHANISM



- Generally used for occasions where the tray needs to be rotated;
- Can be loaded on a stacker, AGV or RGV trolley.

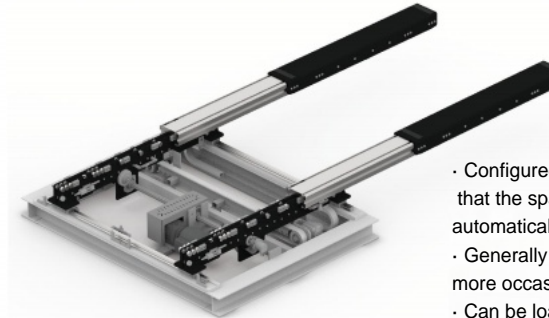
Technical Parameter

Matching Fork	Random Model
Loading	5000kg
Platform Size	Max.2000X2000mm
Rotation Angle	0°90°180°
Rotation Speed	22.5°/s
Positional Accuracy	±3mm

Technical Feature

- Mature design, verified by a large number of projects, with ultra-high reliability;· Can match any type and length of fork;
- Suitable for cold storage or high temperature environment;
- Optional automatic lubrication device;
- Larger load or size can be customized.

FORK SPACE ADJUSTMENT DEVICE



- Configured at the lower part of the expansion fork, so that the spacing of the expansion fork can be automatically adjusted;
- Generally used for pallet specifications or cargo size more occasions;
- Can be loaded on a stacker, a stacker can handle a variety of pallets at the same time, increasing the flexibility of the system.

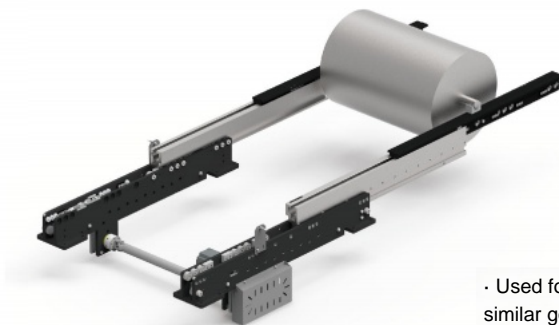
Technical Parameter

Matching Fork	Random Model
Loading	5000kg
Platform Size	Max.3000X3000mm
Adjustment Stroke	3000mm
Speed	18m/min
Acceleration	0.5m/s ²
Positional Accuracy	±2mm

Technical Feature

- Mature design, verified by a large number of projects, with ultra-high reliability;· Lower overall height;
- Two forks can be adjusted symmetrically or asymmetrically (one fork fixed, the other fork adjusted);
- Can match any type and length of fork;
- Suitable for cold storage or high temperature environment;
- Optional automatic lubrication device;
- Larger load or size can be customized.

TELESCOPIC FORK FOR COIL



- Used for handling and storage of coils and similar goods.
- The narrower fork section satisfies the need for lateral access of such goods.

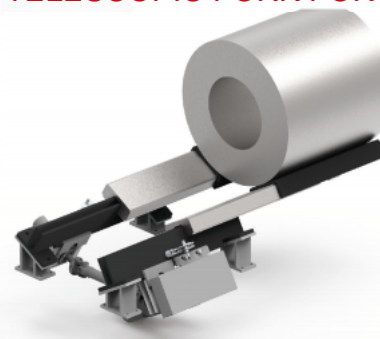
Technical Parameter

Section Size	90x220
Loading	5000kg
Fork Length	Max.2000mm
Speed	Loaded: 60m/min, Unloaded: 120m/
Acceleration	Loaded: 1m/s ² , Unloaded: 2m/s ²
Positional Accuracy	±3mm

Technical Feature

- Using special high-quality alloy steel, effectively reduce the section size and the weight of the whole machine, larger load bearing, longer service life;
- Optimized design of section size, smaller deflection;
- Adopt the combination drive mode of grinding gear and high-strength chain, the positioning accuracy can reach ±3mm;
- Optional automatic lubrication device;
- Suitable for cold storage or high temperature environment;
- Larger load or smaller section can be customized.

TELESCOPIC FORK FOR COIL



- Another form of fork for coils storage.
- Access directly from under the coil.

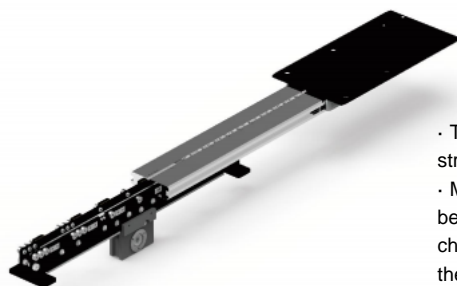
Technical Parameter

	Model1	Model2	Model3
Section Size	180X80	220X100	240X130
Loading	≤1500kg	≤3000kg	≤4000kg
Fork Length	600-2000mm		
Speed	Loaded: 60m/min, Unloaded: 120m/min		
Acceleration	Loaded: 1m/s ² , Unloaded: 2m/s ²		
Positional Accuracy	±3mm		

Technical Feature

- Using special high-quality alloy steel, effectively reduce the section size and the weight of the whole machine, larger load bearing, longer service life;
- Optimized design of section size, smaller deflection;
- Adopt the combination drive mode of grinding gear and high-strength chain, the positioning accuracy can reach ±3mm;
- Suitable for low or high temperature environment;
- Larger load can be customized.

RACK-AND-PINION TELESCOPIC FORK



- The two-stage transmission adopts the structure design of rack and pinion.
- Mainly used in some special occasions, because it avoids the structural design of the chain, it does not need to periodically tighten the chain, and can extend the maintenance interval requirements to a certain extent.

Technical Parameter

Section Size	Random Model
Loading	10000kg
Fork Length	3500mm
Speed	Loaded: 60m/min, Unloaded: 120m/min
Acceleration	Loaded: 1m/s ² , Unloaded: 2m/s ²
Positional Accuracy	±2mm

Technical Feature

- Applicable to any cross-section;
- Optimized design of section size, smaller deflection;
- The two-stage transmission adopts the structure design of rack and pinion, compared with the conventional chain transmission fork, the maintenance interval is longer;
- High precision grinding gear, higher positioning accuracy, up to ±2mm;
- Suitable for low or high temperature environment;
- Support non-standard customization.

NARROW SECTION TELESCOPIC FORK



- Used in situations where the width of the conventional fork section is limited.
- A narrower section provides more access possibilities.

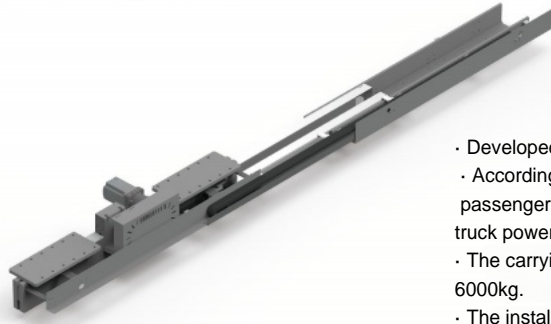
Technical Parameter

Section Size	100X55	120X80
Loading	300kg	1000kg
Fork Length	600-2000mm	
Speed	Loaded: 60m/min, Unloaded: 120m/min	
Acceleration	Loaded: 1m/s ² , Unloaded: 2m/s ²	
Positional Accuracy	±3mm	

Technical Feature

- Using special high-quality alloy steel, effectively reduce the section size and the weight of the whole machine, larger load bearing, longer service life;
- Optimized design of section size, smaller deflection;
- Adopt the combination drive mode of grinding gear and high-strength chain, the positioning accuracy can reach ±3mm;
- Optional automatic lubrication device;
- Suitable for cold storage or high temperature environment;
- Larger load can be customized.

TELESCOPIC FORK FOR POEWR CHANGE



- Developed for the power change industry
- According to different segments, such as passenger car power replacement, heavy truck power replacement.
- The carrying range can reach 400kg to 6000kg.
- The installation mode can be forward or inverted.

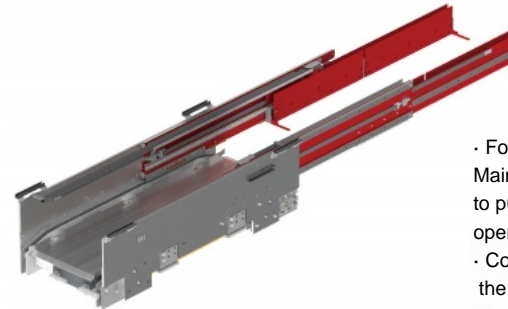
Technical Parameter

Model	Single-Deep, Double-Deep
Installation Mode	Forward or inverted
Loading	400-6000kg
Fork Length	1200-3500mm
Speed	Loaded: 60m/min, Unloaded: 120m/min
Acceleration	Loaded: 1m/s ² , Unloaded: 2m/s ²
Positional Accuracy	±3mm

Technical Feature

- Using special high-quality alloy steel, effectively reduce the section size and the weight of the whole machine, larger load bearing, longer service life;
- Optimized design of section size, smaller deflection;
- The combination of grinding gear and high-strength chain drive mode, positioning accuracy up to ±3mm;
- Suitable for low temperature or high temperature environment;
- Lower overall height for chassis access conditions.

CLAMPING TELESCOPIC FORK



- For push-pull storage of the material box;
- Mainly used in light stacker, with beam rack, to push and pull the material box handling operation;
- Compared with the conventional plate fork, the shelf cost is saved.

Technical Parameter

Section Size	56x185
Loading	100kg
Fork Length	500-1200mm
Speed	Loaded: 60m/min, Unloaded: 120m/min
Acceleration	Loaded: 1m/s ² , Unloaded: 2m/s ²
Positional Accuracy	±2mm

Technical Feature

- The fork adopts servo drive mode, the positioning accuracy can reach ±2mm;
- Dial finger using DC stepper motor, more stable action;
- Six sets of linear guide rail, with four high-strength belt drive, large load, low noise, longer service life;
- Support non-standard customization.