



PROFESSIONAL IN WELDING

PROMIG-250SYN Pulse

Simple, Synergy, Pulse MIG



Full IGBT Modules Structure | True Multi-process | Synergy with JOB-LISTS | Dynamic Control | Aluminum welding expert

Quick Specs

Input Voltage	1PH ~ 230V ±15% 3PH ~ 400V ±15%
Output Range	10A ~ 250A
Rated Output(40°C) 60%	250A / 26.5V
Net Weight	32kg
Wire Feeder	4-Rollers

Machines Processes

Stick (SMAW)
Flux-Cored (FCAW)
MIG (GMAW)
Pulsed MIG (GMAW-P)

Industrial Applications

General fabricators
Contract welding services
Plant maintenance shops



Advanced Features

• Compact & Heavy Duty

250A @ 60% Duty cycle, suitable for workshop or light industrial applications.

• Multi-Process Capable

Able to do Flux-cored, Stick, Lift-TIG, Pulse MIG, advanced MIG for M.S/S.S.

• Pulse MIG Process

Welds 4XXX and 5XXX series Aluminum and Mild Steel for superior quality welding.

• Advanced Performance For Mild Steel

Delivers less spatters, less rework than before.

• Synergic Control

Set weld procedures with one control. Just easily takes 3 Steps to achieve weld perfection.

• Dynamic Control

Controls the welding arc cone width from a softer arc to a harder arc.

• Arc Length Control

By changing the distance between torch and workpiece for an easier operation.

MULTI-PROCESS

Many machines claim they are multi-process, but are little more than a MIG machine in disguise. ProMIG-200SYN Pulse is a true multi-process welder, which means whether you are welding MIG/MAG with solid or Flux-Cored wire, MMA – even the most tricky electrodes – or Lift TIG, ProMIG-200SYN Pulse will perform like it was born to run that process.

- Professional-grade MIG performance, including flux-cored
- Excellent MMA performance
- Exceptional lift TIG performance down to 5A



Professional 4-Rollers Wire Feeder

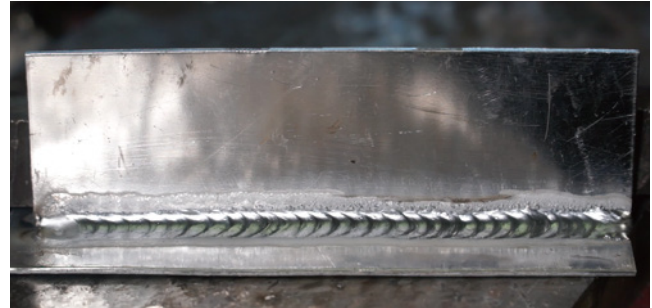
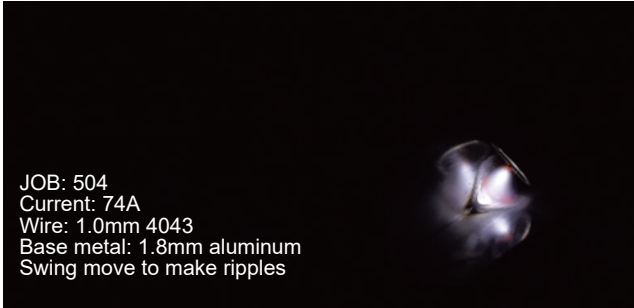
Four-rollers drive systems deliver the electrode to the welding torch. It provides a stable wire speed and is popular for industrial applications.



Pulse MIG

The Pulse MIG process works by forming one droplet of molten metal at the end of the electrode per pulse. Then, just the right amount of current is added to push that one droplet across the arc and into the puddle. The transfer of these droplets occurs through the arc, one droplet per pulse.

With the advanced Pulse MIG, you can easily get a cosmetically pleasing weld seam, with significantly lower and more controlled heat input into the workpiece. It results in much lower distortion and less rework, very suitable for welding the thin Aluminum sheets.



Less Spatters For M.S/S.S

ProMIG-250SYN Pulse is not just an aluminum welding expert, it also has nice results on M.S/S.S welding. With the advanced welding curves from Master's JOBS-LIST (short-circuit transfer), there is less spatters while welding M.S and save your time for secondary work.

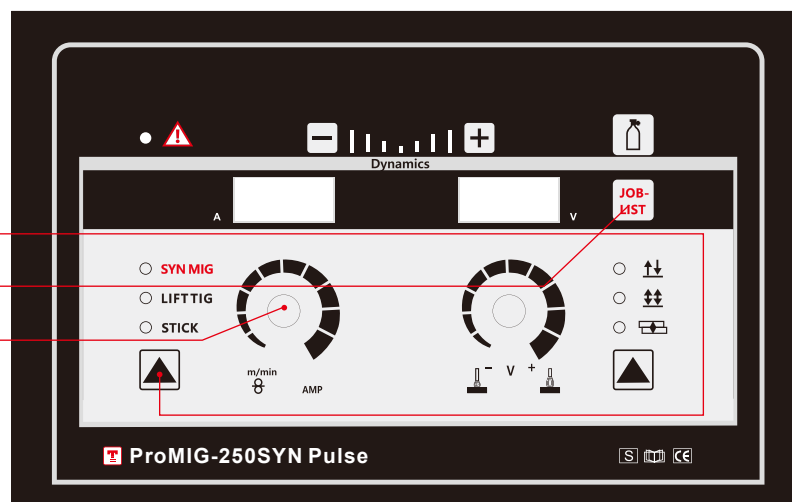


Simple Operation

3 Steps to achieve weld perfection

1. Select operation mode
2. Select Job-list No.
3. Adjust welding current

(always the perfect setting by the synergic function using the material thickness)



Synergy control with job-list

The Job-lists display is easily and intuitively controlled through its graphical user interface. We assembled the perfect welding curve in every Job-No. for highly efficient multi-process welding of carbon steels and stainless steel and aluminum alloys. Operation is easier than ever before.

JOBS-list							
Material	Gas	Wire					
		0.6	0.8	0.9	1.0	1.2	
JOBS No.							
Fe	100%CO ₂	101	102	/	104	/	
	82%Ar 18%CO ₂	201	202	/	204	/	
S.S	98%Ar 2%CO ₂	308	/	302	/	304	/
		316	/	/	/	/	/
Al	100%Ar	4043	/	/	/	504	505
		5356	/	/	/	604	605
Flux Cored	Self-shield	/	702	/	704	/	

Specifications

Item No	ProMIG-250SYN Pulse
Rated Input Voltage	1PH ~ 230V ±15%/3PH ~ 400V ±15%
Max. Load Power Capacity	11.72KVA
Rated Duty Cycle(40 C) 60%	MIG: 250A/26.5V
	MMA: 250A/30V
	TIG: 250A/20V
100%	MIG: 200A/24V
	MMA: 200A/28V
	TIG: 200A/18V
Welding Current/Voltage Range	MIG: 10A/14.5V ~250A/26.5V
	MMA: 20A/20.8V~250A/30V
	TIG: 5A/10.2V~250A/20V
Open Circuit Voltage	70V~80V
Power Factor	0.8
Efficiency	80%
Pre-Gas Time	0.1-10s
Flow-Gas Time	0.1-10s
Wire-feed Mechanism	4 Rollers
Wire-feed Speed Range	0-25m/min
Wire Spool Capacity	300mm (15kg)
Filler Wires (mm) for Fe :	0.8~1.2mm
For Stainless steel:	0.8~1.2mm
For Aluminum:	0.8~1.2mm
Dimension	790x250x650mm
Weight	32KG



PROFESSIONAL IN WELDING

Web & Mail

www.cn-topwell.com
sales@topwellwelders.com

Phone

(+86)571-88231791
(+86)571-88231792