



HIGH PERFORMANCE CUTTING



PowerCUT Series

Classical, Reliable, Powerful,
wildly used for Manual cutting, Gouging or even CNC cutting

PowerCUT-70H

- With more power from an output current of 70Amps, this premier system is for 35mm handheld cutting.
- Designed as a portable machine, the operator can easily select exactly the right tool for job:
- Hand cutting, gouging, portable automation, X-Y table, and so on.

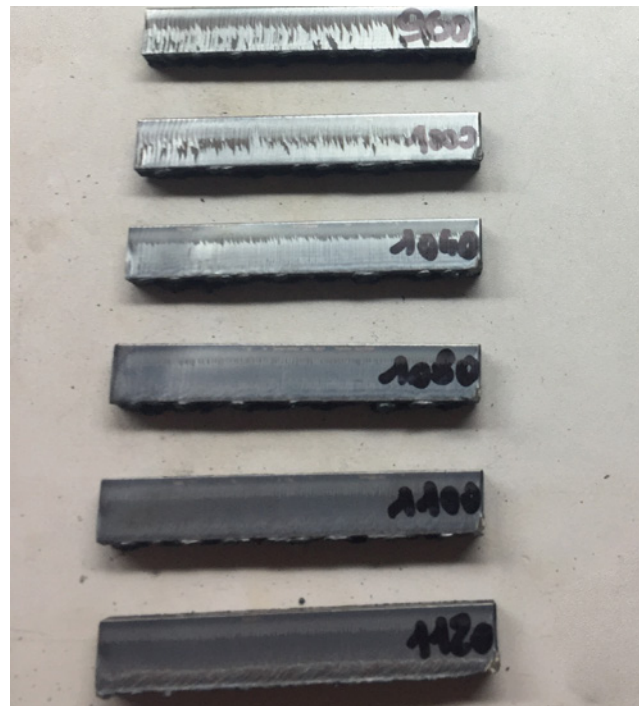
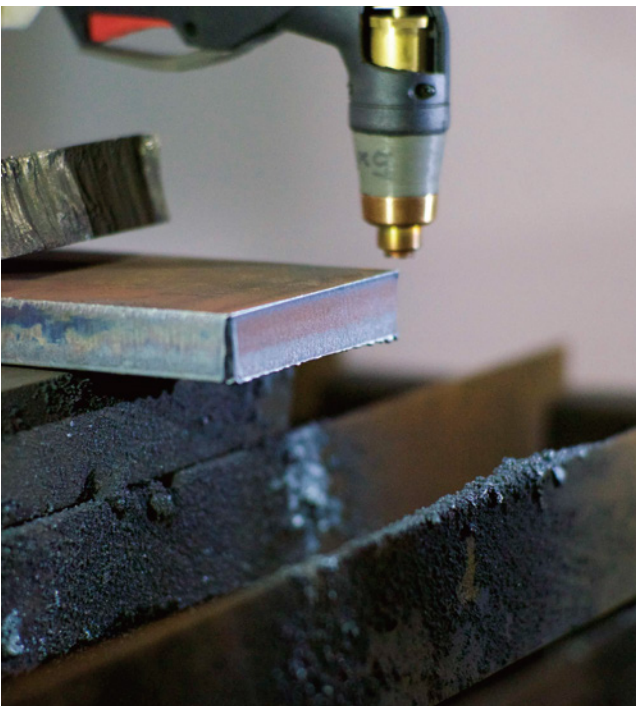


Specifications

System	PowerCUT-70H
Input Voltages	380V, 3PH, 50/60Hz 400V, 3PH, 50/60Hz 220V, 1PH, 50/60Hz
Max. Load Power Capacity	11KVA
Rated output voltage	125VDC
Max output current	70A
Open circuit voltage (OCV)	280VDC
Duty cycle rating 40°C(105°F)	380V/400V: 60% @70A 100% @50A 220V: 60% @70A 100% @ 50A
Operating temperature	-10°C~40°C
Dimensions	540*240*480mm
Weight	22KG
Torch	TP80, 6m (HF, Manual)
Recommended gas inlet flow rate/pressure	CUTTING: 400 scfh, 6.7 scfm @ 85 psi Gouging: 450 scfh, 7.5 scfm @ 70 psi
Certifications	CE,ROHS
Warranty	Power supplies have a 3-year warranty

Advantages

- Light weight, compact design and convenient mounting feet allow for easy mounting in any application.
- Finish jobs faster with cut speeds two and three times greater than other traditional cutting process.
- Spend less time on secondary operations due to superior cut and gouge capacity.
- A powerful 60% duty cycle to handle long time production cutting in the toughest environments.
- The torch is versatile and durable enough to handle a variety of jobs.
- Topwell's long-life consumable deliver operating cost that is less than half the competition.



Cutting Capacity (Carbon Steel)

Capacity	Thickness	Cut speed
Recommended cut (Hand cutting)	16mm	500mm/min
Severance (Hand cutting)	35mm	125mm/min
Pierce*	12mm (Use TP-80Torch)	

*Pierce rating for handheld or with CNC torch height control

PowerCUT-100H/130H

- With more power from an output current of 100~130Amps for cutting 35mm @ 500mm/min with handheld cutting.
- Designed for the operator can easily select exactly the right tool for job;
- Hand cutting or gouging, portable automation, X-Y table, and so on.



Specifications

System	PowerCUT-100H	PowerCUT-130H
Input Voltages	380V, 3PH, 50/60Hz 400V, 3PH, 50/60Hz	380V, 3PH, 50/60Hz 400V, 3PH, 50/60Hz
Max. Load Power Capacity	15KVA	21.5KVA
Rated output voltage	120VDC	132VDC
Max output current	100A	130A
Open circuit voltage (OCV)	280VDC	280VDC
Duty cycle rating 40°C (105°F)	60% @100A	60% @130A
380V /400V, 3PH :	100% @80A	100% @100A
Operating temperature	-10°C~40°C	-10°C~40°C
Dimensions	680*310*650mm	680*310*650mm
Weight	42KG	45KG
Recommended gas inlet flow rate/pressure	Cutting: 460 scfh, 7.7 scfm @ 85 psi Gouging: 480 scfh, 8.0 scfm @ 70 psi	Cutting: 260 l/min (550 scfh) @ 85 psi Gouging: 212 l/min (450 scfh) @ 60 psi
Arc ignition mode	HF or Not HF	HF or Not HF
Certifications	CE, ROHS	CE, ROHS
Warranty	Power supplies have a 3-year warranty	Power supplies have a 3-year warranty

Excellent Cutting Performance

- A powerful 60% duty cycle to handle long time production cutting in the toughest environments.
- Optional HF or Non-HF plasma Torch, more flexible.
- The torch is versatile and durable enough to handle a variety of jobs.
- Finish jobs faster with cut speeds two and three times greater than other traditional cutting process.
- Speed less time on secondary operations due to superior cut and gouge capacity.
- Topwell's long-life consumable deliver operating cost that is less than half the competition.

Cutting Capacity (Carbon Steel)

	PowerCUT-100H	PowerCUT-130H
Capacity	Thickness @ Speed	Thickness@ Speed
Recommended cut	30mm @ 500mm/min	35mm @ 500mm/min
Severance (Hand cutting)	45mm@ 125mm/min	55mm @ 125mm/min
Pierce*	16mm	18mm

*Pierce rating for handheld or with CNC torch height control

Plasma torch

Handheld plasma torch:
TP80 torch



CNC torch:
TP105



TP120
Handheld gouging torch



TP120
Mechanical gouging torch





HIGH PERFORMANCE CUTTING

Web & Mail

www.cn-topwell.com
sales@topwellwelders.com

Phone

(+86)571-88231791
(+86)571-88231792