

CUT-300HD

Delivers superior cutting performance across a broad range of applications needs, professional-grade metal cutting for CNC System.



Cutting Capacity

Mild Steel Cut Capacity

Production Pierce	38mm
Maximum Cutting Capacity (Hand-held)	80mm

Stainless Steel Cut Capacity

Production Pierce	32mm
Maximum Cutting Capacity (Hand-held)	70mm

Aluminum Cut Capacity

Production Pierce	32mm
Maximum Cutting Capacity (Hand-held)	70mm

Maximized productivity

The High Definition technology delivers high precision at unprecedented cutting speeds to deliver more parts per hour.

Superior cut quality and consistency

- Approved perpendicularity tolerance as lower as 0.4mm (32mm cutting plate).
- Work pieces can go directly from the cutting table to welding, painting or assembly without expensive secondary operations.

Unmatched versatility

- Capable to gouging, bevel cutting, hole cutting and CNC cutting.
- Bevel technology works with all common bevel head designs and covers V, A, and top-Y style cuts for mild steel.

Unmatched reliability

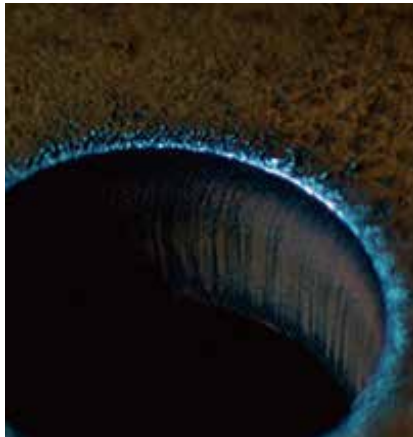
- The great manufacturing processes reduce the opportunity for error ensuring every High Definition system meets our high quality standards.

Minimized operating cost

- The high definition CUT-300HD consumables are manufactured with the highest quality standards to ensure consistently longer life.
- Long life technology significantly increase consumable life and reduce your cost per part.

Technical specifications

Item No	CUT-300HD
Input voltages ($\pm 15\%$)	340-460V, 3-PH, 50-60Hz
Max Input current	340/460V, 228/169A
Output current	30-300A
Rated output voltage	220V
Duty cycle @ 40° C (104° F)	100% @300A
Open circuit voltage (OCV)	380V
Dimensions	1560x700x1830mm
Weight	130kg
Gas supply	Air (clean, dry and oil-free)
Recommended gas inlet flow rate/pressure	0.4-0.6Mpa
Power supply type	Inverter-IGBT
Electrical efficiency	85%
Max. Load Power Capacity	77.65KVA
Certifications	CE, RoHS
Warranty	Power supply: 3-year Torch: 1-year



PLASMA torch: TP300

