

NEW!

ECOMIG-350F



Quick
Specs
CE

Processes:
MIG
Flux-Cored
TIG(Lift TIG)
MMA(Stick)

Applications:
Metal Fabrication
Maintenance and Repair
Auto Body
Light Industrial

Input Power: 380V, 3-Phase
Amperage Range: 10-350A
Rated Output at 40°C (104°F):
350A at 31.5V @60% Duty Cycle
Weight: 38KG

For MIG, TIG and Stick Welding

Waveform control system for precision Arc performance, Portable but heavy duty.

We designed and built the **ECOMIG-350F** based on the waveform control system from the standard MIG welding process. From the full cycle of the wire melting drop transfer between the short circuits and arc burning, the **ECOMIG-350F** can perfectly control the output of welding power.

With the features of powerful peak current and Dynamic control system, the **ECOMIG-350F** is portable but very heavy duty.

Specialist Features

Precision Arc Performance:

- **Multi-Process capable** - Welds MIG, flux-cored, TIG (Lift TIG) and MMA (Stick).
- **Powerful peak current** confirms deep penetration and wide welding capacity. The peak short circuit current is up to around 435Amps on MIG process.
- **Dynamic Control** - Set arc control to crisp or soft depending on your preference and application
- **Featured Wave-form control system:** Maintains a stable, smooth arc for short arc welding on steel. Improved penetration on thicker aluminum sections. Very clear wire melting drop transfer, very few spatters.
- **Voltage Reduction Device (VRD).**
- **Fast, precise, clean arc ignition and arc ending.**
- **MIG Spot welds.**

Professional Features:

- Voltage Reduction Device (VRD). When enabled from the set up menu reduces the open circuit voltage in STICK mode for use in electrically hazardous conditions or when the use of a VRD is required.
- Auto-reconnects for single phase 115/230V 50/60 Hz input allows the flexibility to weld in the shop or take in the field where 230V may not be available. (200MV)
- Weighs in at a mere 16 kg making it easy to carry around the shop or job site.



Outstanding Quality:

- Newly designed using the latest power electronic technology for improved reliability.
- CE Certified.
- One-Year Warranty on parts.

TOPWELL
PROFESSIONAL IN WELDING

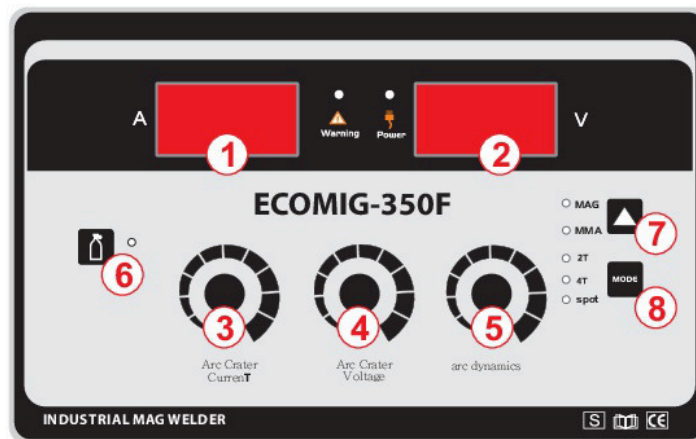
Tel:(86)571-88231791 Email:sales@broad.hk Http:www.topwellwelders.com HANGZHOU TOPWELL TECHNOLOGY CO.,LTD.

1

Technical specifications

Item No	ECOMIG-300F
Rated Input Voltage	3PH ~ 380V ±15%
Max. Load Power Capacity	15.26KVA
Rated Duty Cycle(40°C) 60%	MIG: 350A/31.5V
	MMA: 350A/34V
100%	MIG: 300A/29V
	MMA:300A/32V
Welding Current/Voltage Range	MIG: 10A/14.5V~350A/31.5V
	MMA:10A/20.4V~350A/34V
Open Circuit Voltage	70V~80V
Power Factor	0.85
Spot welding	Yes
Efficiency	85%
Pre-Gas Time	Preset
Flow-Gas Time	Preset
Wire-feed Mechanism	4 Rollers
Wire-feed Speed Range	0~25m/ min
Wire Spool Capacity	300mm (15kg)
Filler Wires ? (mm) Fe, Ss:	0.6~1.6 mm
Dimension (LxWxH)	540x240x480mm
Weight (KG)	38KG

General View of Control Panel



Control Panel Parameter Values

1. Display, left

Welding current

2. Display, right

Welding voltage, Times(S,0.1s)

3. Welding parameter setting, rotary dial

Adjustment of the welding current or Wire feed speed

Press to Adjust the Arc Crater Current .

4. Rotary dial, welding voltage

Adjustment of the welding voltage/ Times and Arcforce

Press the Arc Crater Voltage.

5. Rotary dial, arc dynamics

6. Gas test button

Gas test: For setting the shielding gas quantity

7. Button, welding process

MAG welding

MMA welding

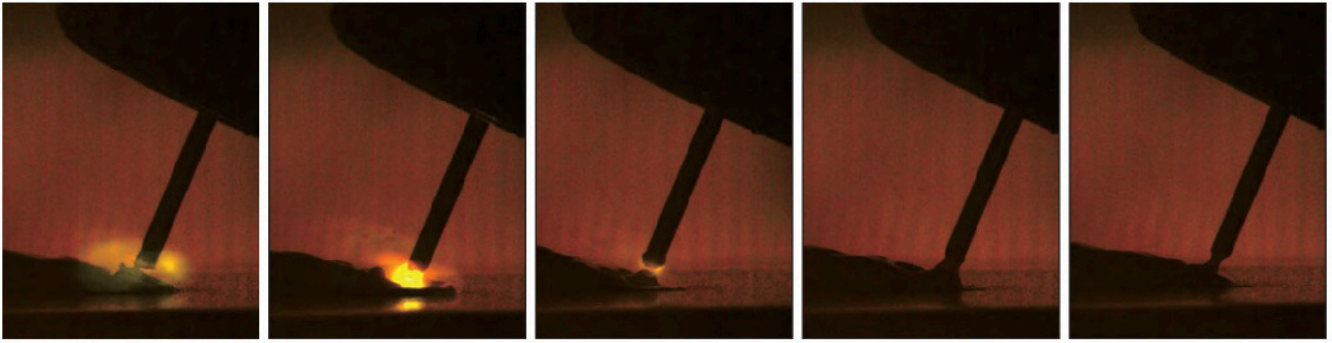
8. Button, Parameter selection (up)

2T holding mode

4T holding mode

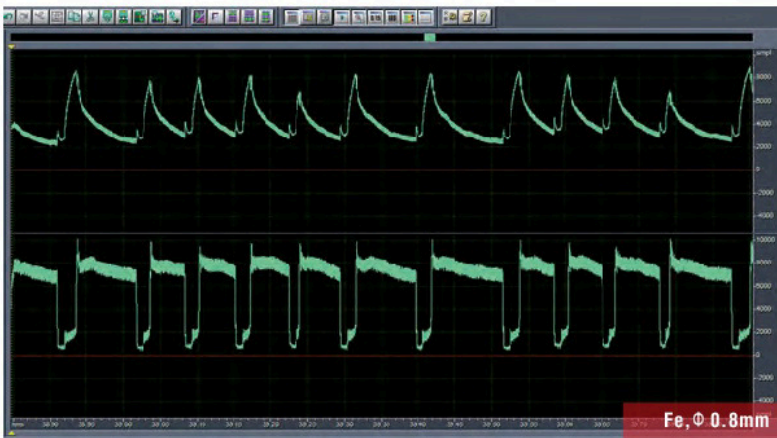
Spot Welding mode selection

Classical MIG/MAG



In classic mode, MIG / MAG welding is carried out in inert gas with automatic wire feed. With this mode, a high welding speed and excellent quality are offered without any extra costs in the processing of ferrous metals, as well as various steels.

The advantage of Wave-form Control System



Featured Wave-form control system:

Perfect waveform of volts/amperes during Short Circuits and Arc Burning process (very smooth welding drop transfer).

Dynamic Control



Dynamic control with a push of a button

You know how it is from experience. Every transformer system has its own unique characteristics. One system produces a slightly softer arc, while the next generates a slightly harder arc. More importantly, every welder has his own preference in terms of what he considers to be the perfect arc: softer and longer, shorter and harder or somewhere in between. This calls for a level of distinction that a transformer system simply cannot realise. Our system allows you to individually adjust the dynamics of the arc to suit the work and welding position at hand and will find the simplest and fastest arc setting that is most suitable in each case. The rest of the job is carried out by the intelligent arc control technology incorporated into the background to achieve a perfect weld seam every time.

Accessories

For Standard accessories



MIG torch: MIG 24KD
Euro Connector
Cable length 3M



Electrode holder with cable 2M
Earth clamp with cable 2M

For Optional accessories



Co₂ gas regular with heater



Argon gas regular



Push-pull Troch:
QTLB-24KD/36KD



Spool gun: QLBF-200/8M

Consumables

For MIG torch: MB15AK



Nozzles

ICS0062	Gas nozzle ϕ 9.5mm
ICS0063	Gas nozzle ϕ 12mm
ICS0064	Gas nozzle ϕ 16mm
ICS0070	Spot welding gas nozzle ϕ 16mm
ICS0711	Tapered gas nozzle ϕ 13mm



Contact Tips

ICU0003-06	Contact tip ϕ 0.6mm M6x25 Ecu
ICU0003-58	Contact tip ϕ 0.8mm M6x25 CuAl
ICU0003-60	Contact tip ϕ 1.0mm M6x25 CuAl
ICU0003-78	Contact tip ϕ 0.8mm M6x25 CuCrZr
ICU0003-80	Contact tip ϕ 1.0mm M6x25 CuCrZr



Replacement Lines

IIC0220	Brass terminal ϕ 2.0X4.0mm 0.35m
IIC0100	Teflon liner ϕ 4.0X1.5mm 3m Blue
IIC0500	Blue liner ϕ 0.6-0.8mm 3m

Others



5-pin connector



Drive Roll

Fe 0.6/0.8 mm
Fe 0.8/0.9 mm
Fe 0.8/1.0 mm
Fe 1.0/1.2 mm