

# CUT-60Di



## Quick Specs



### Industrial Application:

Home workshops  
Metal workshops  
Light fabrication  
Repair and maintenance

### For These materials:

Mild Steel  
Brass  
Stainless Steel  
Copper  
Aluminum

**Processes:** Plasma cutting

**Input Power:** 230V, 1-Phase

**Amperage Range:** 20-60A

**Rated Output at 40°C (104°F):**

60A at 110V @60% Duty Cycle

**Weight:** 19KG

## Compact, indestructible and versatile

The **CUT-60Di** manual plasma system is designed based on the full digital control system, provide excellent cutting and beveling performance on material up to 22mm thickness. This inverter based design operates for a single phase supply with 60A powerful output at 60% heavy duty cycle, set a new standard in this class.

The control system incorporates features such as auto-pilot restart, equipped with industry renowned Torch for superior durability and consumable life.

The **CUT-60Di** operates with 1 phase power supply.

## Specialist Features

- **Pilot Arc for superior arc performance and easy start.**
- **HF or Non-HF Arc ignition:** reliable plasma arc initiation without high frequency.
- **Continuous Output Control:** focus the arc for different material thickness.
- **Rapid Arc Restrike:** fast cutting through gaps, even expanded metal.
- **Powerful with heavy duty: 60A @60%.**
- Recommended 10mm quality cut capacity (0.5 m/min, with optional torch).
- **2T(STD)/4T(HOLD) control mode**
- **Generator power supply friendly.**



## Outstanding Quality:

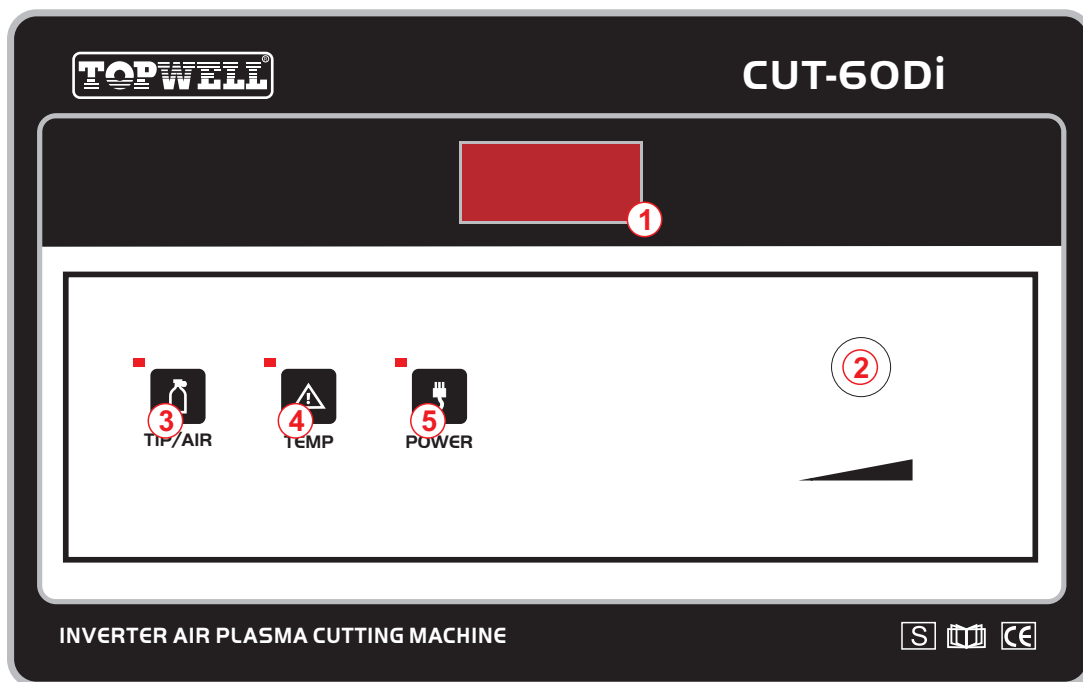
- Newly designed using the latest power electronic technology for improved reliability.
- CE Certified.
- One-Year Warranty on parts.



## Technical specifications

Item No	CUT-60Di
Rated Input Voltage	1PH ~ 230V ±15%
Max. Load Power Capacity	10.31KVA
Rated Duty Cycle(40oC) 60%	60A/110V
100%	50A/105V
Welding Current/Voltage Range	20A/90V~60A/110V
Open Circuit Voltage	260V~290V
Power Factor	0.8
Efficiency	80%
Required Air Pressure	0.3~0.5MPa
Gas Pro-flow/Retard Time	Preset
Quality Cutting Thickness(500mm/min)	15mm
Severance Cutting Thickness(125mm/min)	25mm
Dimension (LxWxH)	540X240X480mm
Weight (KG)	19KG

## General View of Control Panel



### Control Panel Parameter Values

- 1. Ammeter/Voltmeter Display
- 2. Encoder Control

- 3. Gas supply problem
- 4. Over heat/Over loading
- 5. Power LED

# CUT PERFORMANCE



Big cutting power in a small package - the industry's most portable and powerful 60-amp plasma cutter offers 10mm. mild steel cutting. The unit offers easy connection to 115V or 230V input with Auto-Line technology and MVP Adapters.

Hand Torch		
Recommended	Maximum	Severance
Rated Cut @ 500 mm/min 20 IPM	Maximum Cut @ 250 mm/min 10 IPM	Sever Cut @ 125 mm/min 5 IPM

## CUT-60Di

Capacity	Thickness	Cut speed
	Cutting	
Recommended	15mm	500mm/min
	20mm	250mm/min
Severance (hand cutting)	25mm	125mm/min
Pierce*	12mm	

\*Pierce rating for handheld use or with automatic torch height control

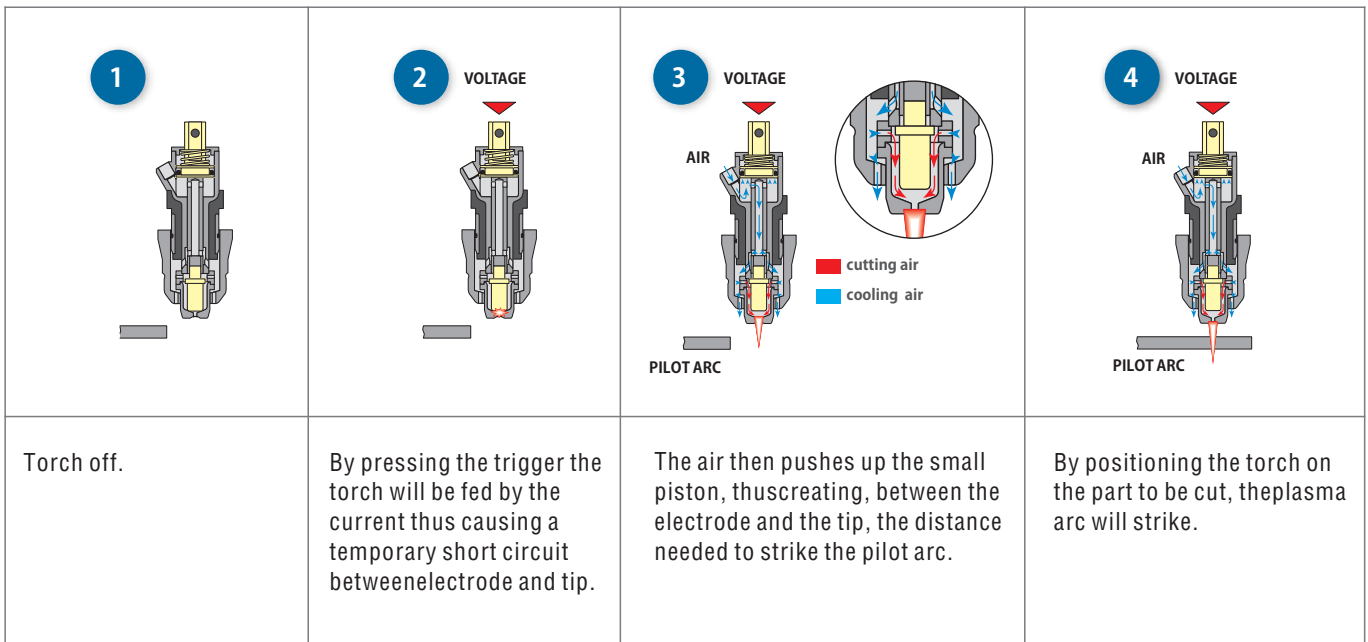
## CUT-70H

Capacity	Thickness	Cut speed
	Cutting	
Recommended	18mm	500mm/min
	23mm	250mm/min
Severance (hand cutting)	32mm	125mm/min
Pierce*	12mm	

\*Pierce rating for handheld use or with automatic torch height control

# Non-HF Arc Ignition system

torches with pilot arc cut in without high frequency.



Less electromagnetic disturbance, with consequent absence of problems for any electronic, radio, television, telephone and computer systems in the vicinity of the cutting positions.

Less electric stress on the torch - and on the respective connecting cables - due to the absence of the high voltage necessary for striking the arc. Greater simplicity in comparison with other torches (without high frequency) on the market, with a consequent decrease of the risks of jamming in the mechanical pneumatic movement for striking the arc. Subject to wear (electrode, tips, nozzles, diffusers etc.), thanks to the better cooling of the torch obtained by reducing the insulating thicknesses (without endangering the safety parameters)



## Accessories

### *For Standard accessories*



**PLASMA torch: HT70-CB**  
 Current: 70 Amp  
 Duty Cycle: 60%  
 Gas: AIR  
 Gas Pressure: 4.5-5.0 Bar  
 Gas Flow: 130 LPM  
 Ignition: HF  
 Post Flow: 70 sec.recommended  
 Standard Length: 6M



**Earth clamp**

### *For Optional accessories*



**PLASMA torch: Trafimet S75**  
 Voltage class: M  
 Standard Length: 6M  
 Air consumption: 150 l/min  
 Air pressure: 5 bar  
 Duty Cycle 60%: 70A  
 Duty Cycle 100%: 50A  
 Ignition: Without HF