

NEW!

CUT-40Di/40MV



Quick Specs



Light Industrial Application:
Home workshop
Metal fabrication workshops
Light fabrication
Repair and maintenance

For These Materials :
Mild Steel
Brass
Stainless Steel
Copper
Aluminum

Input Power: 230V or 115/230V, 1-Phase
Amperage Range: 15-40A
Rated Output at 40°C (104°F):
40A at 96V @60% Duty Cycle
Weight: 12 kg

HF or Non-HF arc ignition system, Powerful and portable.

The **CUT-40Di** is designed based on the full digital control system, specifically for the handyman or tradesman that requires high quality cutting performance at an affordable price. This single phase inverter based power source can easily and accurately cut through a range of materials including mild/stainless steel and aluminum. It is ideal for applications including car panels, light maintenance or fabrication and for use in the home workshop.

Powerful with heavy duty cycle of 60% at 40A, the maximum output.

CUT-40Di: Non-HF ignition with Trafimet S45 torch ensures the excellent cutting performance.

The **CUT-40Di** also could be ordered with PFC system.

The **CUT-40Di** Air plasma cutting system arrives ready to go for fast and precise cutting. It's designed based on the full digital control system, specifically for the handyman or tradesman that requires high quality cutting performance at an affordable price. The CUT-40Di plasma cutting systems are portable enough to carry to any jobsite. Hook up the compressed air, grab the torch and start cutting right away.

Specialist Features

- **Pilot Arc for superior arc performance and easy start.**
- **HF or Non-HF Arc ignition:** reliable plasma arc initiation without high frequency.
- **Continuous Output Control:** focus the arc for different material thickness.
- **Rapid Arc Restrike:** fast cutting through gaps, even expanded metal.
- **Powerful with heavy duty: 40A @60%.**
- Recommended 10mm quality cut capacity (0.5 m/min, with optional torch).
- Light weight and super portable.
- Generator power supply friendly.
- Auto-reconnects for single phase 115/230V 50/60 Hz input allows the flexibility to work in the shop or take in the field where 230V may not be available.
- Weighs in at a mere 12 kg making it easy to carry around the shop or job site.

Outstanding Quality:

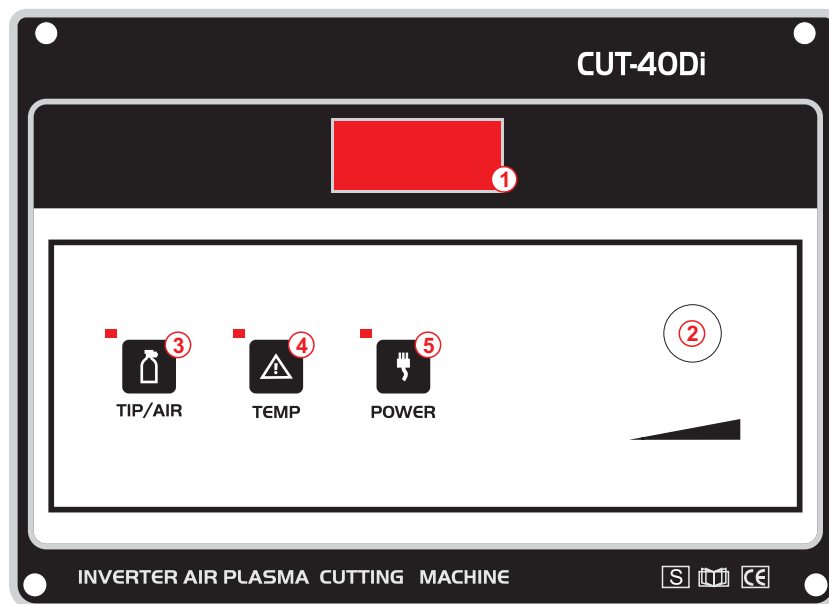
- Newly designed using the latest power electronic technology for improved reliability.
- CE Certified.
- One-Year Warranty on parts.



Technical specifications

Item No	CUT-40Di	CUT-40i MV
Rated Input Voltage	1PH ~ 230V ±15%	1PH ~ 115/230V ±15%
Max. Load Power Capacity	6.25KVA	5.05KVA
Rated Duty Cycle(40°C) 60%	40A/100V	40A/100V
100%	30A/95V	30A/95V
Welding Current/Voltage Range	20A/90V~40A/96V	20A/90V~40A/96V
Open Circuit Voltage	260V~290V	260V~290V
Power Factor	0.8	0.99
Efficiency	80%	80%
Required Air Pressure	0.3~0.5MPa	0.3~0.5MPa
Gas Pro-flow/Retard Time	Preset	Preset
Quality Cutting Thickness(500mm/min)	10mm	10mm
Severance Cutting Thickness(125mm/min)	18mm	18mm
Dimension (LxWxH)	450X210X350mm	450X210X350mm
Weight (KG)	12KG	12KG

General View of Control Panel



Control Panel Parameter Values

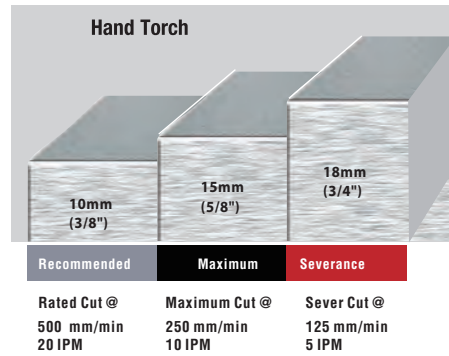
1.Ammeter/Voltmeter Display
2.Encoder Control

3.Gas supply problem
4.Over heat/Over loading
5.Power LED

CUT PERFORMANCE



Big cutting power in a small package - the industry's most portable and powerful 40-amp plasma cutter offers 10mm. mild steel cutting. The unit offers easy connection to 115V or



Capacity

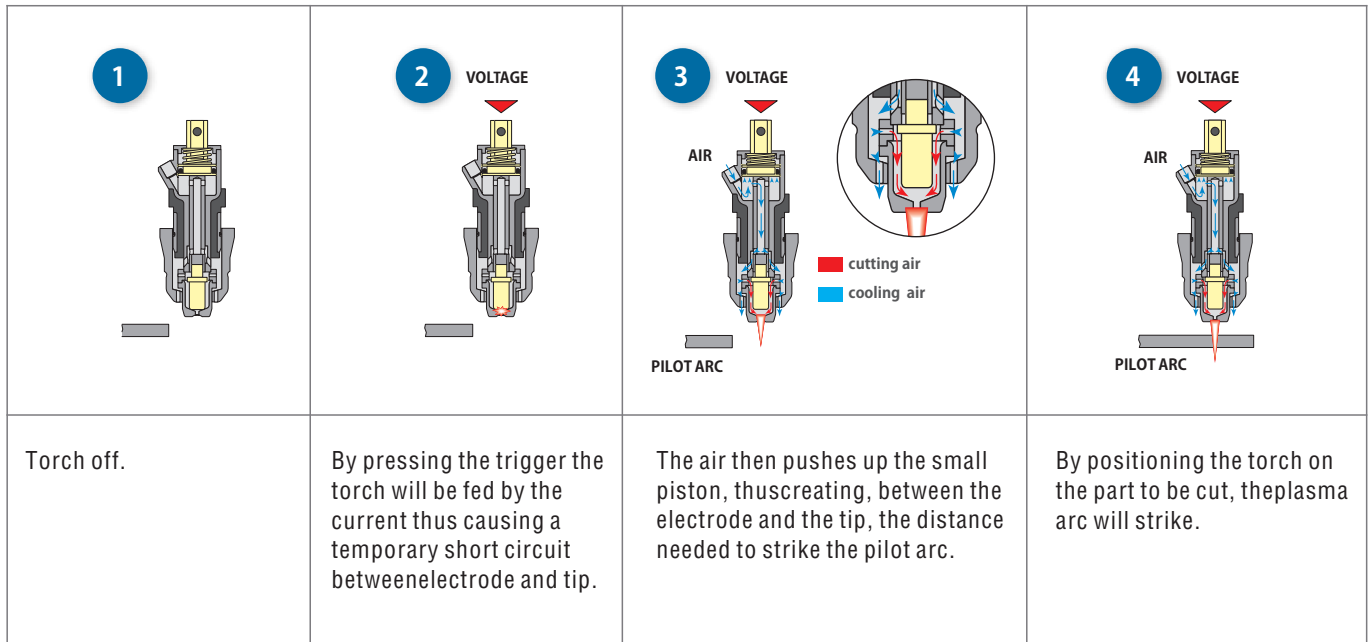
Thickness

Cut speed

Capacity	Thickness	Cut speed
Recommended	10mm	500mm/min
	15mm	250mm/min
Severance (hand cutting)	18mm	125mm/min

Non-HF Arc Ignition system

torches with pilot arc cut in without high frequency.



Less electromagnetic disturbance, with consequent absence of problems for any electronic, radio, television, telephone and computer systems in the vicinity of the cutting positions.

Less electric stress on the torch - and on the respective connecting cables - due to the absence of the high voltage necessary for striking the arc. Greater simplicity in comparison with other torches (without high frequency) on the market, with a consequent decrease of the risks of jamming in the mechanical pneumatic movement for striking the arc. Subject to wear (electrode, tips, nozzles, diffusers etc.), thanks to the better cooling of the torch obtained by reducing the insulating thicknesses (without endangering the safety parameters)



Accessories

For Standard accessories



PLASMA torch: HTM50-CB
 Current: 50 Amp
 Duty Cycle: 60%
 Gas: AIR
 Gas Pressure: 4.5-5.0 Bar
 Gas Flow: 120 LPM
 Ignition: HF
 Post Flow: 50 sec.recommended
 Standard Length: 6M



Earth clamp

For Optional accessories



PLASMA torch: Trafimet S45
 Voltage class: M
 Standard Length: 6M
 Air consumption: 115 l/min
 Air pressure: 5 bar
 Duty Cycle 60%: 40A
 Air pressure switch: ≥ 3.5 bar
 Ignition: Without HF



PLASMA torch: PT40
 Current: 40 Amp
 Duty Cycle: 60%
 Gas: AIR/N2
 Gas Pressure: 4.5-5.0 Bar
 Gas Flow: 100 LPM
 Ignition: Without HF
 Post Flow: 35 sec.recommended
 Standard Length: 6M