

DNT[®]

THE **TOOL** CATALOGUE

DNT[®]

NINGBO DONGNING TOOLS CO.,LTD

Tel:+86-574-83083033

Fax:+86-574-88296233

E-mail:info@nbdntools.com

Add:No.6 Falan Rd,Hengjie Industry Zone,Ningbo City,China Zip:315181

www.nbdntools.com



SCAN TO VISIT OUR
WEBSITE

NINGBO DONGNING TOOLS CO.,LTD



C 公司简介 COMPANY PROFILE

宁波市海曙东宁工具有限公司是一家专业生产汽车维修手动工具的厂家。公司成立于2000年，经过了17年的磨炼和沉淀，形成了一个非常年轻而有活力的团队。我们的宗旨：诚信做事，诚恳做人，做有担当的东宁人。

帮你节约修车的时间和成本，让每一个爱动手的修车人都能成为专业的技师，让你的爱车和你一起追逐人生梦想，也是我们每一个东宁人的追求。

Dongning Tools (Ningbo) Co.,Ltd (or DNT Tools, for short), is a Privately owned factory. It's founded in 2,000, and located in the city of Ningbo, China.

DNT Tools is manufacturer and marketer of tools and equipment solutions for professional tool users. which focus on engine tools, disc brake caliper tool, Coil spring compressor, ball joint remover, and puller tools. Meanwhile company built a QC department to control the tools' quality, aim to ensure that the best quality tools to the customer.

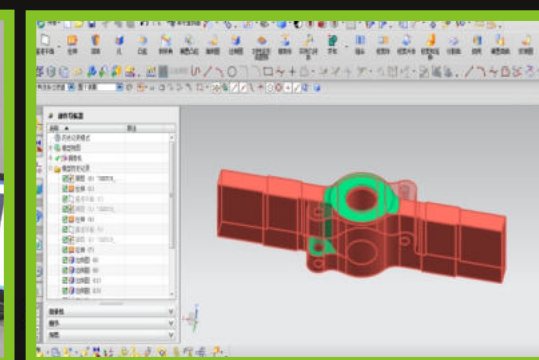
Up to now, Company already own 100 employees and three workshops, It is able to complete tools from development, production, quality control and export. About Annual output 20 million dollars tools are exported to Western Europe, Australia, Northern and Southern America.

DNT Tools aim to become more professional manufacturer and supply better quality tools to Customers.



C 目录 CATALOGUE

Hydraulic Pump	P01
Bearing Puller	P02
Inner Bearing Puller	P08
Bearing Installer Tools	P08
Nut Splitter	P10
Shock Spring Compressor	P11
Wheel Bearing Tools	P15
Hub Puller	P15
injector Puller	P17
Ball Joint Removal Tools	P18
Harmonic Balance Puller	P20
Brake Caliper Tools	P21
Oil Filter Wrench	P24
Engine Tools	P25
Fluid Extractor	P26
Truck Tools	P28



DN-B2005
Hydraulic Ram Pump
液压泵

high pulling force with very little effort compared to the standard mechanical spindles. They significantly reduce the time needed to dismount a bearing or other component.

- Integrated hydraulic cylinder, pump and spindle - no separate pump is required
- Safety valve helps prevent overloading the spindle and the puller in case excessive force is applied
- Long stroke helps enable dismounting in one operation
- Spring-loaded nosepiece centre point allows easy puller centring minimising shaft centre point damage
- Hand lever with ergonomic grip can be rotated 360°
- Extension pieces included

Item No	Max withdrawal force	Stroke Length	Length
DN-B2006	75KN	75mm	305mm
DN-B2005	100KN	100mm	305mm



DN-B1024
Hydraulic Ram Pump
液压泵

Suitable for pulling hubs, flanges, gears and bearings



Item No	Length	Max withdrawal force	Stroke Length
DN-B1024	260mm	10T	10mm
DN-B1062	245mm	10T	15mm
DN-B1065	185mm	10T	15mm
DN-B1066	135mm	1.5T	10mm
DN-B1024-A	260mm	10T	20mm
DN-B2007	400mm	20T	20mm

DN-D2029
Hydraulic Puller(2&3 JAWS)
液压拉马

Ready-to-use, integrated hydraulic cylinder, pump and puller - thus it is assembly-free and it is not necessary to purchase separate parts

- Safety valve prevents spindles and pullers from being overloaded if excessive force is applied
- The spring-loaded centre point on the hydraulic spindle allows easy centring of the puller on the shaft without damaging the shaft
- The hydraulic puller 8" has a maximum withdrawal force of 100 kN (11.2 US ton) and a long stroke of 80 mm (3.1 in.), which facilitates most dismounting jobs in just one operation
- For dismounting jobs requiring less force, 6" hydraulic puller offers a 75 kN (8.4 US ton) version, the hydraulic with a maximum stroke of 75 mm (3 in.)
- Supplied with extension pieces and one nosepiece



Item No	Sizes	Width of grip external(min)	Width of grip external(max)	Effective arm length	Max withdrawal force	Claw Height	Hydraulic Spindle
DN-D2029-1	4"	36mm	100mm	100mm		7.5mm	Manual
DN-D2029-2	6"	52mm	150mm	150mm	10 Tone	9.8mm	B2005
DN-D2029-3	8"	75mm	200mm	200mm	10 Tone	13.8mm	B2005

DN-D2030
Hydraulic Puller(2&3 JAWS)
液压拉马

Ready-to-use, integrated hydraulic cylinder, pump and puller - thus it is assembly-free and it is not necessary to purchase separate parts

- Safety valve prevents spindles and pullers from being overloaded if excessive force is applied
- The spring-loaded centre point on the hydraulic spindle allows easy centring of the puller on the shaft without damaging the shaft
- Supplied with extension pieces and one nosepiece



Item No	Sizes	Width of grip external(min)	Width of grip external(max)	Effective arm length	Max withdrawal force	Claw Height	Hydraulic Spindle
DN-D2030-1	4"	36mm	100mm	100mm		7.5mm	Manual
DN-D2030-2	6"	52mm	150mm	150mm	10 Tone	9.8mm	B1024
DN-D2030-3	8"	75mm	200mm	200mm	10 Tone	13.8mm	B1024

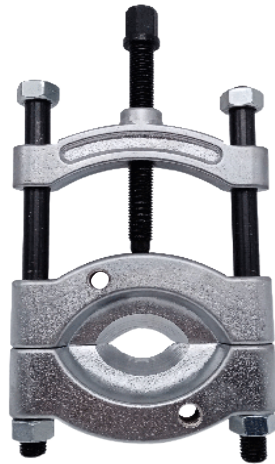
DN-D2024
Bearing Separator Sets
轴承拉拔器

Mechanic puller set with ϕ 30-50mm& ϕ 50-75mm bearing separators and single yoke with 178mm thrust bolt
Suitable for engineering, machines, automotive & agricultural applications
Bearing Separator in this tool set is item No: D2012-1, D2012-2

DN-D2022
Blind housing puller kit
滚珠轴承拉拔器

This kit is different from other bearing separators, when obstruction is round external dia. and internal dia. of bearing. it can be used on the confined space to damage the protecting cover of bearing and easily remove bearings

Item No	Adjust Range (mm)	Bearing Range	Jaw Size ϕ (mm)
DN-D2023	20-95	6004~6010	6/8
		6201~6210	5.5/6/8/11/12.5
		6300~6304	6/8
		6305~6308	11/12.5
DN-D2022	56-220	6021~6032	15/17.4/20
		6212~6230	15/17.4/20/25.2/30
		6309~6321	17.4/20/25.2/30
		6406~6417	15*17.4/20/25.2/30/36.4

DN-D2012
Bearing Separator
轴承拉拔器

Item No.	model
DN-D2012-1	30-50
DN-D2012-2	50-75
DN-D2012-3	75-105
DN-D2012-4	105-150

DN-D2023
Blind housing puller kit
滚珠轴承拉拔器**DN-D2025**
Bearing Puller Tool Kits
轴承拉拔器

Heavy duty twin legged bar type puller, easy removal of pulleys flywheels, bearings and gears, dropped forged alloy steel, heat treated and chrome plated. thrust bearing prevents wear and damage to shaft.

Type: Jaw Puller/2 Jaw Puller

Content: 4" 8" 10" 2 jaw bearing puller

Application: remove bearing from shaft in workshop

DN-D1102
Bearing Splitter Tools
轴承拉拔器

Item No	Capacity
DN-D1102-1	ϕ 5-60mm
DN-D1102-2	ϕ 12-75mm
DN-D1102-3	ϕ 22-115mm
DN-D1102-4	ϕ 25-155mm
DN-D1102-5	ϕ 30-220mm
DN-D1102-6	ϕ 40-280mm

DN-D2026
Bearing Puller Tool Kits
轴承拉拔器

Heavy duty twin legged three jaws bar type puller, easy removal of pulleys flywheels, bearings and gears, dropped forged alloy steel, heat treated and chrome plated. thrust bearing prevents wear and damage to shaft.

Type: Jaw Puller/2 Jaw Puller/3 Jaw Puller

Content: 3" 4" jaw puller

Application: remove bearing from shaft in workshop

DN-D2011
Bearing Splitter Tool kit
轴承拉拔器

Item No	Capacity
DN-D2011-1	ϕ 5-60mm
DN-D2011-2	ϕ 12-75mm
DN-D2011-3	ϕ 22-115mm
DN-D2011-4	ϕ 25-155mm
DN-D2011-5	ϕ 30-220mm
DN-D2011-6	ϕ 40-280mm

DN-D2003
2 jaws Reversible gear pullers
可逆式二爪拉马

Universal puller with two sliding arms drop forged steel, entirely hardened and tempered. Lever action claws fit closely under the part to be removed. The large claw surfaces offer many advantages for careful and quick removal of pulleys, gears, ball bearings etc..

Item No.	size	Spread(mm)	Reach (mm)
DN-D2003-1	4"	90	80
DN-D2003-2	6"	135	110
DN-D2003-3	8"	165	105
DN-D2003-4	10"	245	170
DN-D2003-5	12"	250	165
DN-D2003-6	14"	305	205

DN-D2004
2 jaw gear puller
二爪拉马

Two jaws bearing gear puller installation remover hand tool kit for car Used to process steel parts which are difficult to make Easy to use: can be rotated from the center of plunger and will soon be able to touch the work center that is pulled.

Item No.	size	Spread(mm)	Reach (mm)
DN-D2004-1	2"	15-40	62
DN-D2004-2	3"	18-50	70
DN-D2004-3	4"	18-50	95
DN-D2004-4	6"	20-78	120

DN-D2005
3 jaws Reversible gear pullers
可逆式三爪拉马

Universal puller with two sliding arms drop forged steel, entirely hardened and tempered. Lever action claws fit closely under the part to be removed. The large claw surfaces offer many advantages for careful and quick removal of pulleys, gears, ball bearings etc..

Item No.	size	Spread(mm)	Reach (mm)
DN-D2005-1	4"	100	100
DN-D2005-2	5"	125	100
DN-D2005-3	7"	175	150
DN-D2005-4	9"	225	150
DN-D2005-5	12"	300	205
DN-D2005-6	14"	350	205

DN-D2014
2 jaw gear puller
二爪美式拉马

Heavy duty twin legged bar type puller, easy removal of pulleys, flywheels, bearings and gears, dropped forged chrome steel heat treated and chrome plated. thrust bearing prevents wear and damage to shaft.

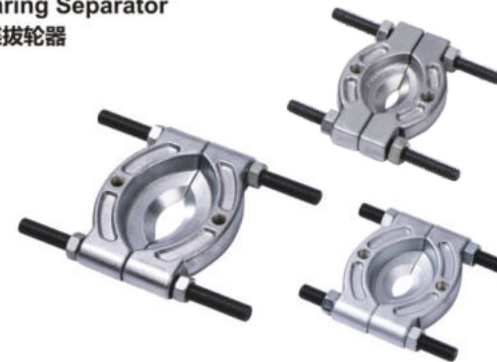
Item No.	Spread(mm)	Reach (mm)
DN-D2014-1	80	100
DN-D2014-2	120	100
DN-D2014-3	150	150
DN-D2014-4	200	150
DN-D2014-5	250	200

DN-D1028
Parallel Puller
美式拉码

Heavy-duty twin legged bar type puller.
Easy removal of pulleys, flywheels, bearings and gears.
Drop forged Chrome steel
Heat treated and chrome plated.
Thrust bearing prevents wear and damage to shaft.



Item No	Spread (mm)	Reach (mm)
DN-D1028-1	80	100
DN-D1028-2	120	100
DN-D1028-3	150	150
DN-D1028-4	200	150
DN-D1028-5	250	200

DN-D1001
Bearing Separator
双碟拨轮器

Designed for removing gears and bearings where access is available behind the item Two knife edges ensure a secure pulling surface Drop forged hardened alloy steel, used in conjunction with two leg mechanical pullers, hydraulic pullers or sliding beam applications.

Item No	Model
DN-D1056-A	10-30MM
DN-D1001-1	30-50mm
DN-D1001-2	50-75mm
DN-D1001-3	75-105mm
DN-D1001-4	105-150mm
DN-D1110	1-3/4" ~ 5-7/8"

DN-D1052
Armature Bearing Puller
轴承拉马

This armature bearing puller is designed for armatures on cars, electric power tools and other electrical products. Supplied with lock on bolts to hold the puller legs into position.



Item No	Size
DN-D1052-1	25mm
DN-D1052-2	55mm
DN-D1052-3	75mm

DN-D2015
Mini 2 jaw gear puller
迷你2爪拉码**DN-D2016**
mini 3 jaw gear puller
迷你三爪拉马

Item No.	Spread(mm)	Reach (mm)	Item No.
DN-D2015-1	70	20	DN-D2016-1
DN-D2015-2	70	45	DN-D2016-2
DN-D2015-3	70	60	DN-D2016-3

DN-D1009
2Jaws Gear Puller
二爪拉码**DN-D1010**
3Jaws Gear Puller
三爪拉码

Puller with two reversible legs for external and internal pulling of gears, bearings, etc. Legs are forged carbon steel and have long and short reach facility. Yoke and thrust bolt are manufactured from carbon steel. Screw has a rolled thread with chemically blacked finish.

Item No	Size	Spread (mm)	Reach (mm)
DN-D1009-1	3"	75	60
DN-D1009-2	4"	100	70
DN-D1009-3	6"	150	120
DN-D1009-4	8"	200	175
DN-D1009-5	10"	250	190
DN-D1009-6	12"	300	215
DN-D1010-1	3"	75	60
DN-D1010-2	4"	100	70
DN-D1010-3	6"	150	120
DN-D1010-4	8"	200	175
DN-D1010-5	10"	250	190
DN-D1010-6	12"	300	215

DN-D1103
2 Jaws Gear Puller
二爪拉马

Item No	Spread(mm)	Reach(mm)
DN-D1103-1	60	40
DN-D1103-2	70	74

DN-D1002**12pcs Bearing Separator And Puller Set
12件蝶式轴承拆卸器**

Mechanical puller set with Ø30-50mm and Ø50-75mm separators and single yoke with 180mm thrust bolt. Suitable for engineering, automotive, marine and agricultural applications. Supplied in carry-case. Contents: Separators; Ø30-50mm, Ø50-75mm, Thrust Bolt 180mm, Extension Bars; 4 x 130, 4 x 105mm, Cross Beam 160mm. Separator Size: Maximum Reach: Ø30-50mm 170mm Ø50-75mm 220mm

**DN-D1013****14pcs Bearing Separator And Puller Set
14件蝶式轴承拆卸器**

Mechanical puller set with Ø30-50mm and Ø50-75mm separators and single yoke with 180mm thrust bolt. Suitable for engineering, automotive, marine and agricultural applications. Supplied in carry-case. Contents: Separators; Ø30-50mm, Ø50-75mm, Thrust Bolt 180mm, Extension Bars; 4 x 130, 4 x 105mm, Cross Beam 160mm. Separator Size: Maximum Reach: Ø30-50mm 170mm Ø50-75mm 220mm

**DN-D1003****8pcs Bearing Separator And Puller Set
8件蝶式轴承拆卸器**

Includes a Bearing Splitter with 4" capacity, two sets of hex push puller legs, a 8" bar type puller head mated with a custom thread forcing screw. Puller/Bearing set for tough jobs, up to 7-tons, larger applications, and greater reach 8" to 16". Capacity to remove steering stem bearings.

**DN-D1020****10Ton Hydraulic Bearing Separator Tool Kit
10吨液压培林拆卸组 (75-105mm)**

Cast puller yoke with forged separator. 10tonne hydraulic ram interchangeable with other units in the series. Supplied with 75-105mm bearing separator. Maximum puller depth 420mm. Contents: 10tonne hydraulic ram, separator 75-105mm, bolt 5/8", extension rod 200mm*4pc, cross beam.

**DN-D1004****10 Ton Hydraulic Bearing Separator Set
10吨液压培林拆卸组 (105-150mm)**

Supplied with 10tonne hydraulic ram. Suitable for pulling commercial vehicle size bearings from Ø105-150mm. Hydraulic ram interchangeable with other sets in the range. Maximum depth 420mm. Supplied in steel case. Contents: 10tonne Hydraulic Ram, Separator Ø120-150mm, Plug, Extension Rod 250mm x 4pc, Cross Beam

**DN-D1045****Hydraulic Gear And Bearing Separator Set
液压拉马组套**

Forged steel bearing separator. 10ton Ram with enough force to remove most stubborn bearings, pulleys and shafts. Packed in handy storage/carry-case. Contents: 10ton Hydraulic Ram, 100mm Leg; 3pc, 150mm Leg 3pc, 200mm Leg; 3pc, Twin Head, Triple Head, Extension Rod; 25 x 50mm x 1pc, 25 x 100mm x 1pc, Main Rod; 200mm x 4pc, Beam, Separator 75-105mm, Bolt 5/8", Ram Service Kit, Ram Nut.

**DN-D1022****12pcs Bearing Separator And Puller Set
12件培林拆卸器**

Heavy duty drop forged, heat treated steel construction hardened and tempered, precision-machined treaded bolts black oxide and zinc plated finish resists corrosion applies even pulling force to prevent damage to gears or bearings. contents: 2pc. bearing separators 2pc. 5-1/2" (12TPI) bolts with nuts and washers 2pc. 6" x 3/8" (16TPI) pawls with nuts 4pc. 6-3/4" connecting bolts 3/8" (16TPI) 5/16" (18TPI) with nuts 1pc. yoke 1pc. 5-1/2" x 9/16" (10TPI) counter screw 2pc. counter screw adapters cone, flat complete with molded case"

**DN-D1056****9Pcs Bearing Separator And Puller Set
9件培林拆卸器**

Compact set containing bearing separator, yoke and extensions. Chrome Vanadium components ensure long tool life. Also suitable for removing small gears, wheels and fittings from shafts. Supplied in storage case. Contents: Separator 15-58mm, 2" Jaw 50mm, Thrust Screw, 2" Extension Rod 45mm, 2" Extension 30mm, Cross Beam.

**DN-D1060-A****Twin And Triple Leg Reversible Pullers
二爪/三爪综合拉马**

include: DN-D1009 and DN-D1010 The size: 3", 4", 6" and 8" 3" 75mm 4" 100mm 6" 150mm 8" 200mm

**DN-D1048****Hydraulic Gear Puller Set
液压拉马组套**

Forged steel 2-way yoke allows twin or triple leg pulls. 10ton Hydraulic power unit with tommy bar. Suitable for pulling hubs, flanges, gears and bearings. Supplied with 3 x 3 position puller arms and 3 sets of extension plates. Maximum reach 250mm.

**DN-D1066****12pcs Bearing & Gear Puller Set
12件培林拉马组套**

Twin/triple leg puller set with reversible legs allowing internal and external pulling operations. Manufactured from carbon steel with a drop-forged heat treated construction for strength and durability. Supplied with two and three leg yokes. Thrust bearing prevents wear and damage to shaft. Hex head forcing screws suitable for use with a ratchet or spanner. Size/Spread (2 & 3 Leg): 35-130mm Reach: 100, 209, 259mm Claw Depth: 8mm Claw Thickness: 3mm

**DN-D1057****Master Two Jaw -Three Jaw Internal / External Puller Set
二爪/三爪内轴承拆卸器**

This master combination puller set has all the pulling attachments for the many pulling applications on cars, trucks, farm equipment and other machinery. Features two and three way internal and external heads, reversible cone, forcing screw and three different sets of legs.

**DN-D1099****Thin Type Two Jaws Bearing Remover
齿轮盘拆卸器**

Removes objects (bearing, etc) in narrow place. Thin type 2 jaw gear puller (range: 40 - 90mm) that can be used for many application. Removes objects (bearing, etc) in narrow place.

**DN-D1026****Battery Terminal & Wiper Arm Puller
雨刮器拆卸器**

Heavy-duty construction with locking feature allowing the tool to be fastened securely to the wiper arm before commencing pull. Combination of swivel mounted thrust bearing and tommy bar on thrust bolt allow even the most stubborn wiper arms to be lifted off their drives. Suitable also for battery terminal and alternator bearing removal. Maximum Opening: 28mm Maximum Collar Size: 43mm.

**DN-D1029****Inner Bearing Puller
内轴承拉马**

Four collets which fit a wide range of applications. Select the appropriate sized collet by comparing it with the application. Insert the collet, expand it to fit the hole, then attach the slide hammer assembly. Set includes: Four collet sizes: 7/16" to 1/2", 9/16" to 11/16", 5/8" to 1", 1" to 1-1/4" and 2-1/2 pound slide hammer with T-handle. Housed in a blow-molded plastic storage case.



DN-D1090**9pcs Blind Bearing Puller Set**
内孔滑锤组

Medium stroke 1.4kg slide hammer with 390mm shaft. Bearing extractor collets with internal capacity from 9 to 34mm. Supplied in carry-case. Collet Ø: 9-11, 11-13, 13-16, 16-17, 18-20, 20-25,

**DN-D1050****Blind Hole Bearing Puller Set**
内孔培林滑锤组

Comprehensive kit offering leg style and slide hammer pulling assemblies for use with expanding split collets. Removes bearings easily where access is available in the centre of the bearing. Collet expands and grips on the underside of the bearing
RANGE: MIX MAX:
8~11mm, 12~17mm,
18~23mm, 24~29mm, 30~34mm, 34~38mm, 39~43mm, 44~48mm, 49~53mm, 53~58mm.
Size: M10*1.5P, M10*1.5P, M8*1.25P, M10*1.5P, M6*1.0P

**DN-D1031****Internal/External Gear Puller Set**
三爪内外轴承拉马组套

small of internal puller 15mm-30mm.
Large of internal puller 30-80mm.
External puller 15-80mm.
Locking the nut to open 3-jaws and clip on the bearing. and then use the slide hammer to pull out the bearing.

**DN-D1016****17Pcs Bearing Bushing Driver Installer Tool**
17件培林拆卸器

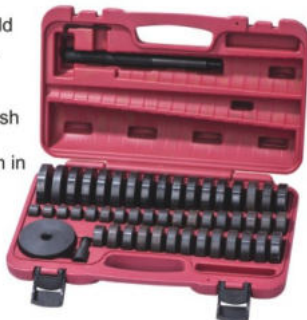
Quickly & easily inserts wheel bearing races & seals without damage to race & axle housing. Content:
13 pcs adaptor-10, 12, 14, 15, 16, 18, 20, 22, 25, 28, 30, 32, 35, 38mm
3pcs driver handle-115, 140, 160mm(L)

**DN-D1014****10Pcs Bearing Race And Seal Driver Set**
10件斜型培林拆卸器

Quickly and easily to insert bearing race
Collars fit most standard wheel bearing size
Help reduce damage to both race and axle housing
9 collar size:
(1) 1.555"/39.5mm (2) 1.752"/44.5mm
(3) 1.968"/50mm (4) 2.322"/59mm
(5) 2.480"/63mm (6) 2.559"/65mm
(7) 2.834"/72mm (8) 2.992"/76mm
(9) 3.189"/81mm

**DN-D1062****52pcs Bearing Removal Tool Set**
52件铁套培林拆装组

This master set allows you to build your own custom bushing driver. Select the required sizes and assemble your driver tool. Build to suit the required seal, bush or bearing job.
Disc size: 18mm through to 65mm in 1mm increments and 74mm.

**DN-D1063****Extra Large Bearing Removal Tool**
特大铁套培林拆装组

This extra large driver set allows you to build your own custom bushing driver. Select the required sizes and assemble your driver tool. Discs are connected with a shaft and screw which connects to the driver handle. Build to suit the required seal bush or bearing job. Discs size: 70mm through to 150mm in 5mm increments.

**DN-D1085****Motorcycle Chain Breaker & Riveter**
摩托车链条拆卸器

Breaks and rejoins most types of chain quickly and easily. Suitable for most sizes of drive or pins, dies and detailed instructions.
Contents: Pins: 2.2, 2.9, 3.8mm, Pin Guide: 2.2 Upper, 2.2mm Lower, Riveter Pin, Anvil: 3.6mm, Spring, Press Plate, Lever, Handle, Chain Press.

**DN-D2032****32pc Screw Repair Tools Set**
32件螺丝修复工具套装

tool kit consists of:

Impact screwdriver:

- Bits are short (36 mm) 5/16":
- PHILLIPS bits, 2 pieces: PH.2, PH.3
- POZIDRIV bits, 2 pieces: PZ.2, PZ.3
- Slotted bits, 2 pieces: 9, 11 mm
- Hexagonal bits HEX, 3 pieces: 6, 8, 10 mm
- TORX 35mm bits, 5 pieces: T25, T30, T40, T45, T50

Bits long (80 mm) 5/16":

PHILLIPS bits, 2 pieces: PH.2, PH.3
Slotted bits, 2 pieces: 9, 11 mm
3/8" DRx5/16" Hex Bit Adapter
Bit holder 1/2" DRx5/16"

Hairpins, 4 pieces: 6, 8, 10, 12 mm

Nut cutter 5/16"-1/2" (9-12 mm)

Nut cutter 1/2"-5/8" (12-16 mm)

Nut cutter 5/8"-7/8" (16-22 mm)

Extractor Set, 5 items: 7/64", 9/64", 5/32", 1/4", 19/64"

DN-D1012**Nut Splitter**
4件螺母破切器

Splits rusted hex nuts up to 1.1/16inch (27mm) across the flats.

Flat round head design allows tool to be used in inaccessible areas.

Cutting blade and forcing screw head have a ball joint drive to prevent binding under load. Does not damage the bolt threads.

Sizes:

5/16"~1/2" (9~12mm)

1/2"~5/8" (12~16mm)

5/8"~7/8" (16~22mm)

7/2"~11/8" (22~27mm)"

**DN-D1104****Universal C-Frame Nut Splitter**
综合型螺母取出器

Forged and heat-treated frame with offset handle works where ordinary nut splitters may fail. Smooth action cracks nuts without damaging bolt threads.

Chisel rotates to line up parallel to bolt. Splits non-heat-treated nuts of 7mm to 22mm diameter.

**DN-D2027****Hydraulic Nut Splitter Tool Set**
液压螺母破坏器套装

The hydraulic ram provides up to 10 tonnes of direct non-twisting application of thrust that is more effective and secure than a mechanical thrust screw. Fully threaded body allows for quick and easy height adjustment. The splitter bodies are manufactured from carbon steel.

8 Piece Set contents:

1x hydraulic ram.

1x splitter body 3/8" diameter capacity.

1x splitter body 1/2" diameter capacity.

1x splitter body 5/8" diameter capacity.

1x splitter body 3/4" diameter capacity.

1x splitter body 1" diameter capacity.

1x threaded attachment sleeve.

DN-B2002

All round two way whole vehicle series
(shock absorber disassembly tool)

全能型双向全车系 (减震器拆装工具)

Suitable for MacPherson strut coil springs.

Plastic yoke protectors that protect the
spring coating from damage, which can in-
validate the vehicle manufacturer' s guaran-
tee, if not fitted. Safety

yokes carefully shaped to stop the spring

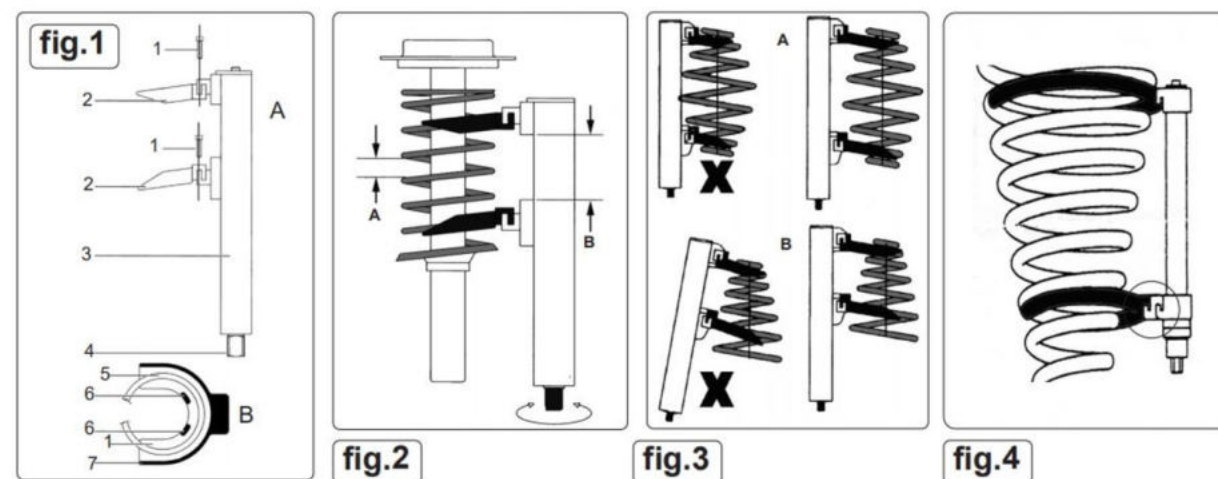
Tips

Compressor Capacity..... 2500kg
Max. jaw opening 265mm
Drive 21mm



Patent No.2022232726498

How To Use



- 1 Retaining bolts
- 2 Yoke
- 3 Compressor body
- 4 Hex nut
- 5 Spring
- 6 Safety lips
- 7 Outer rib

⊠ WARNING! DO NOT compress the spring to an
extent where the coil windings touch, fig.2.A.

⊠ WARNING! DO NOT compress the spring to an
extent where the jaws touch fig.2.B.

DN-B2001

L-turn whole vehicle system
(shock absorber disassembly tool)

左旋全车系 (减震器拆装工具)



DN-B2003

Left handed horseshoe
(shock absorber disassembly tool)

左旋马蹄 (减震器拆装工具)



Item No	Compressor	Gold Yokes Φ 80-105mm	Handed	Black Yokes Φ 105-150mm	Handed	Silver Yokes Φ 145-190mm	Handed
DN-B2001	Yes	Yes	N/A	Yes	L/H	Yes	L/H
DN-B2002	Yes	Yes	R/H	Yes	R/H+L/H	Yes	R/H+L/H
DN-B2003	No	No	N/A	Yes	L/H	Yes	L/H
DN-B1027	Yes	Yes	R/H	Yes	R/H	Yes	R/H

1. Ensure the jaws and the body of the compressor are correctly aligned at all times during spring compression fig.3.A. For conical springs, the centre line of the spring should remain parallel to the compressor body, fig.3.B.
2. If necessary use the extension block as in fig.4 to keep the spring and compressor body parallel.
3. Secure the strut with a clamp, vice or other adequate holding device.
4. TO COMPRESS A STRUT REMOVED FROM A VEHICLE
- 4.1. Mount the selected jaws on the compressor body, fit the retaining bolts and tighten securely.
- 4.2. Rotate the hexagonal nut, using air or hand tools to drive the jaws apart to the length of the spring and to allow compression of as many windings as possible.
- 4.3. Place the spring strut compressor onto the spring, ensuring the spring seats correctly, fig.1.B., between the safety lips, fig.1.6. and the outer rib fig.1.7. and cannot slide out during compression.
- 4.4. Ensure the jaws and body are correctly aligned, fig.3 / 4.
- 4.5. Rotate the hexagonal nut, using air or hand tools and compress the spring until the upper support bearing is free and the spring will rotate.
5. TO DECOMPRESS A STRUT REMOVED FROM A VEHICLE
- 5.1. To decompress the spring, reverse the compress procedure.

DN-B1064 Suspension Spring Compressor Tool Set 强力型减震弹簧压缩器

Design for work on macpherson coils springs 80-195mm, includes 3 pairs of C jaws for a wide of vehicle applications.
Safety design of free turning since unacceptable overload.
3 pairs if yellow covers help protect lacquered springs suifact from damage

Safety precaution: accepted the impact driver.
Use range: 80-115mm
Use range: 110-150mm
Use range: 140-195mm

- Max Jaw Open: 317mm
- Max Load: 26000Nm
- Suitable to work with air impact
- Weight: 32kg/set



DN-B1027 Shock Spring Compressor Set 减震弹簧压缩器

Designed for work on regular on macpherson strut assemblies use where space under wheel arch is limited
Safety precaution: do not use the impact driver.
Use range: 80-115mm
Use range: 110-150mm
Use range: 140-195mm

- Max Jaw Open: 300mm
- Max Load: 980Nm
- Disable with air impact
- Weight: 16kg/set



DN-B1008 Coil Spring Compressor 新款弹簧压缩器

Contains 2 spring compressors and 4 security hooks.
Features double ended jaws with attachable security hooks for added safety and control.
Operating capacity: 300mm.
Overall length: 300mm.
Suitable for passenger vehicles and light commercials.
Driver: 24mm.



DN-B1005 Coil Spring Compressor 弹簧压缩器

Designed for using in limited space under wheel arch. Jaws design is fitting to wrap coil claws for safety.



Item No	Length	Driver
DN-B1005	355mm	1/2 SQ OR 21MM
DN-B1005-A	410mm	1/2 SQ OR 21MM
DN-B1006	255mm	1/2 SQ OR 21MM
DN-B1006-A	270mm	1/2 SQ OR 21MM

DN-B1028 Coil Spring Compressor For Mercedes 奔驰专用弹簧压缩器

Telescopic compressor for shock absorber springs. Suitable for removing and installing helicoidally springs within multi-link, independent arm suspension systems-both front and rear. Supplied with two pairs of interchangeable caps provided with a three-hook safety system. $\Phi 70/130$ suitable for Mercedes-Benz (124, 202, 210), SAAB, Ford, Skoda $\Phi 90/150$ suitable for Mercedes-Benz (126, 140) 100/200, OPEL, GM, LADA, PEUGEOT 405/605 ROVER, HYUNDAI, SAAB, VOLVO, VW, FIAT, MAZDA, TOYOTA, NISSAN, MITSUBISHI, Ford.



DN-B1067 Universal Spring Compressor 弹簧压缩器

Universal-Spring-Compressor with safety guard to remove coil springs quickly and safe
Instructions for use:
Hook the spring tensions into position on opposute side of the spring to cover as many turns as possible.
Using a spanner or impact wrench, tighten the 19 mm spindle driver heads alternately.
Instally the new coil spring.
Using the drive heads alternately, release the tension on the spring evenly.
1200Kg Maximum capacity per pair.



DN-B1025 Strut Coil Spring Compressor 爪式弹簧压缩器

Hook engage spring which can be compressed by turning hex nut.
Jaws capacity: 23-280mm
Length: 280mm



DN-B1026 Coil Spring Compressor 单个弹簧压缩器

Heavy-duty Chrome Vanadium construction. Long-reach arms compress a higher proportion of the coil spring. Allows even and safe compression of spring prior to installation.
Drive: 21mm Hex
Maximum Jaw Opening: 310mm



DN-B1047 Coil Spring Compressor 通用型弹簧压缩器

Suitable for small to medium sized vehicles.
Two sliding hooks on carrier rail prevent slipping 24 mm spindle drive.
Load capacity: 15,000 n (1,500 kg)
Not suitable for impact wrenches Vpa / gs approved.
Length: 300mm



DN-B1055 3pcs Coil Spring Compressor 3件弹簧压缩器

Designed for using in limited space under wheel arch.
Jaws design is fitting to wrap coil claws for safety.
Length: 310mm
driver: 24mm



DN-B1052 MacPherson Strut Spring Hook Compressor 四方弹簧压缩器

MacPherson Strut Spring Hook Compressor. These devices quickly and easily compress most sizes of MacPherson strut springs. Setup is fast and simple. Compression is achieved by alternating from one assembly to another. Each device has a heat-treated alloy thrust screw (5/8"-11 x 12") with forged hooks.



DN-D1021**19pcs Fwd Wheel Bearing Tool Kit
19件仰角培林拆装组**

Up-to-date kit for the installation and removal of front hub bearings without the need to dismantle the steering knuckle and strut assembly. Fast and simple to use. Suitable for most front wheel drive cars. Heavy-duty steel drifts with black phosphate finish for corrosion resistance. May be used with impact wrench. Supplied in carry case.

**DN-D1023****23Pcs Fwd Front Wheel Bearing Tool Kit
23件仰角培林拆装工具**

A great tool used to replace front wheel bearings without removing the steering knuckle & strut assembly. AS the spindle assemble without removed there is no need to align front end after the job is done. Fit on most cars. Could be worked with shop press also.

**DN-D1024****24pcs Pull And Press Sleeve Kit
24件铁套拆装工具**

Universal tool kit for extracting and drawing in silent bearings, hydraulic bearing, bearing bushes, ball bearings, shaft seals, rubber bearings, etc. Fully universal application, ideal for different vehicle, Car+HGVs, Depending on requirements, the particular sleeves can also be individually reworked. Application also with workshop press+press frame. 20pcs press-on sleeves. Inside: Φ34,36,38,40,42,44,46,48,50,52,54,56,58,60,62,64,66,68,70,72mm Outside: Φ44,46,48,50,52,54,56,58,60,62,64,66,68,70,72,74,76,78,80,82mm 4pcs pulling spindle+nuts, size:M10,M12,M14,M16

**DN-D1025****27pcs Pull And Press Sleeve Kit
27件铁套拆装工具**

Universal tool kit for extracting and drawing in silent bearings, hydraulic bearing, bearing bushes, ball bearings, shaft seals, rubber bearings, etc. Fully universal application, ideal for different vehicle, Car+HGVs, Depending on requirements, the particular sleeves can also be individually reworked. Application also with workshop press+press frame. 20pcs press-on sleeves. Inside: Φ34,36,38,40,42,44,46,48,50,52,54,56,58,60,62,64,66,68,70,72mm,75mm,80mm Outside: Φ44,46,48,50,52,54,56,58,60,62,64,66,68,70,72,74,76,78,80,82mm,85mm,90mm 5pcs pulling spindle+nuts, size:M10,M12,M14,M16,M18

**DN-D1113****Rear Axle Bearing Puller Set
后桥轴承拉拔器**

Pullers: 1" to 1-7/8", 1-5/16 to 2-3/8", 1-3/8" to 2-7/8"
Pulling Tools to Quickly Remove Semi-Floating Rear Axle Bearing Washer Captures the Bearing Firmly Use Slide Hammer with 5/8"- 18 UNF Thread

**DN-D1117****26pc Press And Pull Sleeve Kit
铁套拆装工具**

Universal application of step disc fits many kinds of different vehicles Easy work to remove and install for Bearing, bush, silent bearing, hydraulic bearing, rubber bearing
Sleeves are 3 1/2" in height
11pcs (Gold):D44XD34, D46XD36, D54XD44,D56XD46, D58XD48, D66XD56, D68XD58, D70XD60, D78XD68, D80XD70, D82XD72
9 pcs (Silver):D48XD38, D50XD40, D64XD54, D52XD42, D60XD50, D62XD52, D72XD62, D74XD64, D76XD66

**DN-D1095****Master Press And Pull Sleeve Kit
分体式铁套拆装工具**

Universal applications - Car - LCV Contains 20x Press Sleeves in 2mm diameter steps
Inside Diameter Range: 34 - 72mm
Outside Diameter Range: 44 - 82mm
4x Step Plates / 4x Pulling Spindles with thrust bearings.
Supplied in mould storage case

**DN-D1087****Hydraulic Hub Puller Set
液压轮毂拆装工具**

Chromed, heat treated SAE1045 steel puller yoke with hydraulic ram. Suitable for four and five stud hubs. Hydraulic ram provides additional power to extract the most stubborn hubs. Supplied in storage case.

**DN-D1096****Two Way Hydraulic Gear Puller
五爪液压轮毂拔卸器**

Capacity:12tons.
Special safety device design to ensure worker operation.

**DN-D1105****Universal Wheel Hub Puller Set
三爪轮毂拔卸器**

Readily adjustable sliding legs to pull wheel hubs more quicker & easier where the bolt circle does not exceed 7-1/2" (190.2mm) also removers press-fit rear break drums. Striking handle & puller screw included. Special designed to use on most models of car. Provides a straight pull. Will not distort wheel lugs. Striking wrench and puller screw included

**DN-D1142****Wheel Hub Puller
液压轮毂拆卸工具**

Hydraulic Wheel Hub Puller Hydraulic Ram with 10 Ton capacity used to press the axle shaft from the hub. For 4 or 5 bolt hubs with a 96 - 125mm diameter circle. Applicable to most vehicles

**DN-D1112****Wheel Hub Pullers
手动轮毂拆卸工具**

For cars and goods vehicles with wheel stud circles up to 250 mm. Simple use. Just place the plate with the spindle on the centre marking of the axle and fold back the hooks onto the plate. With swivelling nut holders always lying flat on the hub to prevent wheel stud damage.

**DN-D1112-A****Wheel Hub Pullers
手动/液压轮毂拆卸工具**

For wheel stud circles up to 250 mm With wheel stud protection using rotating nut apertures that always lie flat to the hub for ø 22 mm and suitable reduction bushing ø 14 and 18 mm Easy to use Upgradeable with hydraulic

**DN-D1128****Hydraulic Wheel Hub Puller with Hammer Set 10 Ton
轮毂拆卸工具**

Included 3 pullers/ hammers: hydraulic spindle, screw, impact hammer
It is suitable for almost all 3 . 4 . 5 and 6 holed hubs.
Used to press the axle shaft from the hub
For four or five bolt hubs with the centerline of the bolts mounted in a 4.57"-5.31" diameter circle
Hydraulic spindle with 10 ton capacity
Suitable for GM . VAG .Peugeot . Citroen . Renault . Ford and Volvo etc.
Highest quality design for long life in daily workshop use

**DN-D1140****40PC Wheel Hub Puller Set With Slide Hammer
40件轮毂拆卸工具**

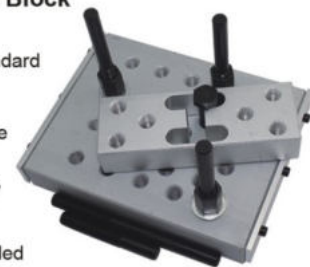
Designed for the removal of stubborn four and five stud hubs and brake drums on cars and light commercial vehicles. Used for Audi,VW,Alfa Romeo,Ford, Citroen,BMW,Mazada,Fiat,M-Benz, Seat,Opel,Peugeot, Remait,Skoda,Porsche. Includes 4.3kg slide hammer, manual forc screw and two sizes of stud.

**DN-D1141****18PC Wheel Hub Puller Set with slide hammer
18件轮毂拆卸工具**

Designed for the removal of stubborn four and five stud hubs and brake drums on cars and light commercial vehicles. Used for Audi,VW,Alfa Romeo,Ford, Citroen,BMW,Mazada,Fiat,M-Benz, Seat,Opel,Peugeot, Remait,Skoda,Porsche. Includes 4.3kg slide hammer, manual forc screw and two sizes of stud.

**DN-D1127****Universal Press Support Block
轮毂轴承拆装支架**

Designed to be used with a standard workshop press. Multiple threaded drilling's in a heavy duty aluminium base plate allows the support bars to be installed in virtually any position, Allowing the bearing or bush to be positioned horizontally. Includes a packing block for added versatility. Ideal for the removal of wheel bearings and bushes.

**DN-D1051****9-Way Slide Hammer Puller Set
通用型滑锤组套**

Pulls flange-type rear axles and most front-wheel drive hubs. Internal and external jaws provide a variety of combinations to pull bearings, gears and seals. Two- and three-way cross blocks and cone provide the perfect jaw configuration for most jobs. Set also includes a grip wrench adapter and a dent puller attachment for sheet metal or other unique pulling requirements. puller type:Twin leg Internal capacity:35-110mm Reach:82mm External capacity:50-140mm Reach:75mm Puller Type:Triple leg Internal capacity:50-135mm Reach:82mm External capacity:20-135mm reach:75mm



DN-D2006
21pc master Axle Puller Tool Set
21件滑锤拉马套装

Tool set for removing front and rear axle bearingsRemoves seals from front and rear wheel vehiclesAlso functions as a slide hammer for dent pulling and gear pulling dutyStorage case includes usage photosincludes 21-Piece for pulling the master axle.

DN-D1089
13pcs Slide Hammer Body Repair Set
大型钣金滑锤组

Ideal For Auto Body Repair
Slide Weight: 10LBS
Slide Pole Length: 22-3/4"
Slide Pole Diameter: 3/4"
Attachments: 1 Handle, Washer, 5pc Hasp Iron, Long Tube Hasp Iron, Cast Iron Hammer, Right Angle Flat Steel, Hex Taping Adaptor, Hex Taping Screw Holder, Taping Screw, Connector Hasp Iron, Double Barreled Connector

**DN-D1118**
40pc Diesel Injector Extractor Slide Hammer Set
40件滑锤拉马组套

This professional tool is a specialized sliding hammer for removal of stuck and seized common rail injectors without dismantling the cylinder head for all injection nozzle cars. The robust construction enables rapid withdrawal, even the most severely seized injector will come out with little fuss. The kit comes with adapters, 3.9kg weight, handle and injector extractors. Ideal for the professional mechanic or enthusiastic DIY'er. Made by professionals for professionals.

**DN-D1081**
14pcs Diesel Injector Puller Set
滑锤仰角套筒组

Suitable for the fast and safe removal of Bosch, Delphi, Denso and Siemens diesel injectors. Set includes keys and deep open profile sockets, used to dismantle injectors, plus adaptors for attaching the slide hammer securely to the body of the injector. Ball joint allows hammer to be used in confined areas. Contents: Slide Hammer, 1/2"Sq Drive Sockets;25, 27, 29, 30mm, Tamper-Proof Key, 5 x Adaptor (Bosch, Delphi, Denso, Siemens), Ball Joint

**DN-D2028**
PNEUMATIC PULLER SET FOR INJECTOR
气动喷油嘴拉拔器

- Specially designed to combine vibrations & Pneumatic force to allow for the easy removal of seized injectors.
- Comes complete with a universal adaptor set that cover Bosch, Delphi ,Denso, Siemens CR injectors which has solenoid coil or screw connections.
- Covers 99% of injectors.
- Tool for disassembling particularly fixed injection nozzles and glow plugs
- Compact and effective - the solution to problems in which a sliding hammer cannot be used

Characteristics:
Working torque: 20-30Nm
Working pressure: 5-8 bar (max)

Composition:
(1x) air hydraulic hammer
(19x) adapter for various applications

DN-D1064
Ball Joint Separator
本田球头拆卸器

For splitting track-rod ends,anti-roll bar mountings,ball joints,etc.
Opening:17mm

**DN-D1065**
Ball Joint Separator
球头拆卸器

For splitting track-rod ends,anti-roll bar mountings,ball joints,etc.
opening:17mm

**DN-D1046**
Ball Joint Separator
球头拔卸器

Manufactured from hardened steel with tough durable epoxy coating. The lever can be set to one of its four positions simply by releasing the pivoting pin. The tapered slim fork allows easy access. Suitable for use on most car and light commercial ball joints.Throat depth:36mm.

**DN-D1073**
Universal Ball Joint Separator
可调式球头拔卸器

For splitting track-rod ends,anti-roll bar mountings,ball joints,etc.



Item No	A	B
DN-D1073	20mm	62mm
DN-D1074	17mm	58mm

DN-B1068
2pc Ball Joint Separator
2PC球头取出器

Ball Joint Extractor For Splitting track-rod ends, anti-roll bar mountings,ball joints,etc. max opening 18mm ~ 58mm
Ball Joint Separator Fits most cars, simply insert tool between spindle arm and tie rod,turn thrust bolt with 3/4"(19mm)socket or spanner to spread tie rod easily.

**DN-B1011**
Universal Ball Joint Separator
欧式球头取出器

Special design 2-stage operation suits most cars and light trucks ball joints in steering & suspension. Tempered drop forged steel body and offset lever provide an excellent performance and long usage. Offset lever permits maximum fork opening in 56mm. Fork opening: 22mm.

**DN-B1012**
Ball Joint Separator
日式球头取出器

It works on most cars and light trucks. Heat treated drop forged steel body & bolt for long rough usage. Spread ball joints easily from the spindle support arm. Fork opening: 19mm.

**DN-B1037**
Pitman Arm Puller
小龙门架球头拆卸器**DN-B1038**
Pitman Arm Puller
大龙门架球头拆卸器

This puller will handle nearly any Pitman arm job on passenger cars and light trucks. It features special forged jaws shaped to fit the job, ensuring a positive grip every time.

Item No	A	B
DN-B1037	27mm	52mm
DN-B1038	33mm	64mm

DN-B1049
Ball Joint Separator
立式球头

Forged steel body with steel thrust bolt. Suitable for most cars and light vans. Jaw Capacity: 19mm

**DN-B1046**
7"Outer Tie Rod Puller
两爪活动球头 (大)

This tool is a must when you're servicing outer tie rods and ball joints. It works on imported and domestic models, front or rear wheel drive, cast or stamped-steel steering knuckles. Handles up to 5 tons of force. Jaws spread to 3" and has a 4" reach. Jaws, once tightened, won't slip on the knuckle.



DN-B1029

Multi-Purpose Inner Tie Rod Tool
方向机拉杆手 (中)



This tool allows quick and easy replacement of the inner track rod joint. Removal of the steering gear is not necessary.

Item No	Size
DN-B1029	Φ33~42mm
DN-B1030	Φ27~42mm
DN-B1071	Φ42~50mm

DN-B1030

Multi-Purpose Inner Tie Rod Tool
方向机拉杆手 (小)

**DN-B1032**

5pcs Ball Joint Separator Set
5件球头组套

Kit includes five popular tools used for servicing pitman arms, ball joints, and tie rods on most vehicles.

Set includes:

DN-B1038 – Pitman arm puller.
DN-B1049 – Tie rod end remover.
DN-B104 – Outer tie rod remover.
DN-B1037 – Tie rod end puller.
DN-B1011 – Ball joint separator.

**DN-D1088**

Hydraulic Ball Joint Splitter
小型液压欧式球头

Suitable for light commercial vehicles. Specially designed to be operated manually or by 1.5 tonne hydraulic ram supplied.

Features a step down thread adaptor that allows fitting of the manual thrust screw.

Opening:22mm

**DN-D1011**

5Pcs Ball Joint Separator
5件叉式球头拆卸器

Use to separate ball joints, tie rods, and Pitman arms.

Set contains two handles: Knurled handle allows use of a hammer; Smooth handle fits in a pneumatic hammer. Three sizes of pickle forks included: 1-1/8", 15/16", and 11/16".

Set contains: DN-D1011-1 Fork heads (set of three: 11/16", 15/16", and 1-1/8"). DN-D1011-2 Handles (set of two: knurled handle for use with a hammer; smooth handle for use with an air hammer).

**DN-D2010**

5pc fork ball joint separator set
5件叉式球头拆卸工具



This kit includes five popular tools used for servicing Pitman arms, ball joints, and tie rods on most vehicles & remove shock linkage. Two Pitman Arm Pullers for large or small ball joint applications. Two Ball Joint Separators. Three different Tie Rod

Item No.	Length	Fork Spread
DN-D2010-1	11"	1-1/8"
DN-D2010-2	11-3/4"	1-5/8"
DN-D2010-3	11-5/8"	1-7/16"
DN-D2010-4	16"	11/16"
DN-D2010-5	16"	15/16"

DN-B1031

Ball Joint Separator Set
3件球头撬杆

Features three popular "pickle forks" in a blow-molded case. Used to remove shock linkage, tie rods, and ball joints. Also for general service on many cars and light trucks.

Includes:

DN-B1031-1 – Size 300mm*22mm Fork Spread.
DN-B1031-2 – Size 300mm*27mm Fork Spread.
DN-B1031-3 – Size 400mm*16.5mm Fork Spread.

**DN-D1032**

Large Ball Joint Separator
大型球头拔套

Large ball joint separator is designed for use on all cars and light trucks that have press-fit type ball joints.

For extracting work pieces without bore. Valuable accessory for common press and pull sleeve sets.

Open c-shaped construction allows more flexible operation directly on vehicle compared to conventional press frames.

Magnetic holders on thrust plates for convenient working.

With impact quality M18 vibration spindle; The momentum produced by impact wrench acts like hammer strokes on the work piece, thus causing tight connections to break open can be converted for use with hydraulic spindle (un1.1/2"x16 thread), 9" opening.

**DN-D1061**

Hydraulic Ball Joint Separator
液压重型球头组

Heavy-duty ball joint splitter suitable for HGV vehicles.

Specially designed to be operated manually or by 10 tonne hydraulic ram supplied.

Features a step down thread adaptor that allows fitting of the manual thrust screw or hydraulic ram.

Jaw Capacity: 35mm

Jaw Opening Capacity: 100mm

**DN-B1063**

Ball Joint Remover For Mercedes Benz
奔驰球头取出器

Ball Joint Installer

and Remover Set - Mercedes-Benz
This tool removes and installs the lower ball joints whilst insitu without removing parts, used for Mercedes-Benz (W220/W211/W230).

**DN-B1041**

4wd Ball Joint Remover Kit(4 In 1)
10件球头连接拆装组 (4合1)

This starter kit is the backbone to ball joint, U-joint, anchor pins, and many other general pressing operations.

Kit includes 5 adapters and C-Frame provided in a case.

**DN-B1042**

4WD Ball Joint Remover Kit(3 In 1)
球头连接拆装组 (3合1)

This starter kit is the backbone to ball joint, U-joint, anchor pins, and many other general pressing operations.

Kit includes 3 adapters and C-Frame provided in a case.

**DN-B1060**

Master Ball Joint Super Set
21件球头拆卸器

Master ball joint super set allows for the removal and installation of press-fit ball joints on many GM and Ford light-duty trucks, vans and SUVs through 2003; Dodge light trucks through 1998; Dodge vans, Durango and Dakota through 2003; and Honda Accord, Civic, del Sol, and Prelude through 2001.

The C-frame tool can be used alone to remove and universal joints.

Comes complete with an application cross reference and instructions in a blow-molded case.

**DN-D1008**

46pcs Harmonic Balancer And Puller Tool
46件方向盘/齿轮拉拔器

Versatile puller capable of removing a wide variety of components having tapped pulling holes such as gears, pulleys, etc. includes: Yoke, 130mm Thrust Bolt, Centering Adaptors; Small, Large, Flat, Bolts;

2PC 1/4"28*2-12";
2PC 5/16"18*3-1/2;
2PC 5/16"18*5-1/2";
3PC 3/8"16*2";
2PC 3/8"16*3";
5PC 3/8"16*4-1/2";
3PC 3/8"24*1-1/2;
3PC M8*1.25*45mm;
2PC M8*1.25*65mm;
3PC M8*1.25*90mm;
3PC M10*1.5*35mm.

**DN-D1078**

8pcs Steering Wheel Puller Set
8件方向盘拆装工具

Two-leg puller, with two pairs of legs and two thrust caps. For use on GM (Vauxhall/Opel) and Ford vehicles.

long puller arm length:135mm
Short puller arm length:87mm

**DN-D1006**

15pcs Harmonic Balancer And Puller Tool
15件方向盘拉拔器

Versatile puller capable of removing a wide variety of components having tapped pulling holes such as gears, pulleys, etc.

Includes: yoke 5/8-18" L 127mm, thrust bolt, centering Adaptors; Small, Large, Flat, Bolts; 1PC 5/8-18; 2pcs 3/8-16; 3pcs 3/8-24; 2pcs M8*1.25"; 3pcs 5/16-18; 1PC flat head; 1PC Pointed head

**DN-D1007**

13pcs Harmonic Balance And Puller Tool
13件方向盘/齿轮拉拔器

Versatile puller capable of removing a wide variety of components having tapped pulling holes such as gears, pulleys, etc. includes: Yoke

5/8-18" L 127mm, Thrust Bolt, Centring Adaptors; Small, Large, Flat, Bolts; 1PC 5/8-18; 2PCS 3/8-16; 3PCS 3/8-24; 2PCS M8*1.25"; 3PCS 5/16-18; 1PC Pointed head



DN-B1014-C**12pcs Brake Caliper Wind Back Tool
12件刹车分泵调整组**

Alloy steel, hardened & phosphate zinc finished contents;
1-Rotating caliper(right hand helix bolt)
11-Disc brake pad, Suitable models; Mercedes benz, BMW, OPEL, FORD, NISSAN(CEFIRO), TOYOTA, GM.

**DN-B1014****13pcs Brake Caliper Wind Back Tool
13件刹车分泵调整组**

13 pcs basic set for setting back brake pistons
- right threaded wind back tool
- suitable for many car models
- includes list of matching car models
Services: Mercedes, BMW, VW, GM, Audi, Ford, Honda, Subaru, Mazda, Nissan, Mitsubishi, Toyota, Renault & Opel

**DN-B1039****15pcs Brake Caliper Wind Back Tool
15件刹车分泵调整组**

This tool set is used to install new brake pads by winding the piston back into the caliper through the convenient T-bar rotation. Piston retraction is smoothly completed without damaging the piston or boot. Its 13 adaptors can be used on both 2 and 4 wheel

**DN-B1009****18pcs Brake Caliper Wind Back Tool
18件刹车分泵调整组**

Includes left- and right-handed thrust bolt assemblies.
Applications: Alfa Romeo, Audi, BMW, Citroen, Fiat, Ford, GM, Honda, Jaguar, Mazda, Mercedes, Mitsubishi, Nissan, Opel, Peugeot, Renault, Rover, Saab, Seat, Skoda, Subaru, Toyota, Vauxhall, Volkswagen, Volvo.

**DN-B1013****21pcs Brake Caliper Wind Back Tool
21件刹车分泵调整组**

21 Piece set with 17 interchangeable heads that offer a large coverage of disc brake calipers fitted to today's modern vehicles.
Kit includes both left and right hand piston retracting forcing screws.
For use on the following vehicles:
Mercedes, BMW, VW, GM, Audi, Ford, Honda, Subaru, Mazda, Nissan, Mitsubishi, Toyota, Rover, 4WD, etc. Universal applications.

**DN-B1015****35pcs Brake Caliper Wind Back Tool
35件刹车分泵调整组**

For rotating pistons back into caliper to provide clearance for new pads
Prevents damage to the piston and boot
Suitable for Bmw, Ford, Vw, Audi, Porsche, Saab, Opel, Volvo, Jaguar, Citroen, Peugeot, Renault, Lancia, Alfa romeo, Fiat, Nissan, Honda, Subaru, Toyota, Mitsubishi

**DN-B1016****35pcs Brake Caliper Wind Back Tool
35件刹车分泵调整组**

For rotating pistons back into caliper to provide clearance for new pads
Prevents damage to the piston and boot
Suitable for Bmw, Ford, Vw, Audi, Porsche, Saab, Opel, Volvo, Jaguar, Citroen, Peugeot, Renault, Lancia, Alfa romeo, Fiat, Nissan, Honda, Subaru, Toyota, Mitsubishi

**DN-B1040****37pcs Brake Caliper Wind Back Tool
37件刹车分泵调整组**

For rotating pistons back into caliper to provide clearance for new pads
Prevents damage to the piston and boot
Suitable for Bmw, Ford, Vw, Audi, Porsche, Saab, Opel, Volvo, Jaguar, Citroen, Peugeot, Renault, Lancia, Alfa romeo, Fiat, Nissan, Honda, Subaru, Toyota, Mitsubishi

**DN-B1072****40pc Brake Piston Caliper Tool Kit
40件刹车分泵调整组**

comprehensive kit designed to allow quick and efficient brake servicing for most vehicles. The kit is supplied with left handed and right handed winders for returning the brake piston into the caliper and providing clearance for new brake pads. The kit includes pin punches, brake keys, pentagon bit and sockets

**DN-B1073****21pc Air Brake Piston Caliper Tools
21件气动刹车分泵调整组**

Winds back brake caliper pistons to replace brake pads
Fits most European & Japanese cars
Magnetic pads hold adaptors in place
Tool for both left & right handed threaded pistons
Set includes 20 popular adaptors

**DN-B1074****18pc Air Brake Piston Caliper Tools
18件气动刹车分泵调整组**

Winds back brake caliper pistons to replace brake pads
Fits most European & Japanese cars
Magnetic pads hold adaptors in place
Tool for both left & right handed threaded pistons
Set includes 17 popular adaptors

**DN-B1075****16pc Air Brake Piston Caliper Tools
16件气动刹车分泵调整组**

Winds back brake caliper pistons to replace brake pads
Fits most European & Japanese cars
Magnetic pads hold adaptors in place
Tool for both left & right handed threaded pistons
Set includes 15 popular adaptors

**DN-B1010****12pcs Brake Caliper Wind Back Tool
12件刹车分泵调整组**

12 Piece Set With 10 Interchangeable Heads That Offer A Large Coverage Of Disc Brake Calipers Fitted To Today's Modern Vehicles. Kit Includes Both Left And Right Hand Piston Retracting Forcing Screws. For Use On The Following Vehicles:
Mercedes, Bmw, Vw, Gm, Audi, Ford, Honda, Subaru, Mazda, Nissan, Mitsubishi, Toyota, Rover, 4wd, Etc. Universal Applications.

**DN-B1078****27pc Disc Brake Caliper Tool Kit
27件刹车分泵调整组**

Most comprehensive disc brake caliper wind back kit with 22 interchangeable heads. Some heads are double sided and both left and right hand piston retracting tools are included. Universal applications For use on: Mercedes, BMW, VW, GM, Audi, Ford, Honda, Subaru, Mazda, Nissan, Mitsubishi, Toyota, Rover, 4WD, Renault, Astra, Volvo, Alfa Romeo, Jaguar, Opel, Fiat, Peugeot, etc.

**DN-B1080****13pc Disc Brake Caliper Tool Set
13件刹车分泵调整组 (新款)**

For Rotating Pistons Back into the Caliper and to Provide Clearance for New Pads
Durable and Easy Use for Professionals and Serious DIY Users
Application for Most of Both Imported and Domestic Major Cars
Helps Prevent damage to the piston and boot

**DN-A1159****15pc Brake Maintenance and Assembly Tool Set
15件刹车维修工具组套**

all purpose set for drum and disc brake systems
- includes following tools:
- brake spring pliers with movable claw for removing and installing of brake shoe springs
- brake spring pliers for installing and removing the brake shoe recuperating spring on riveted brake linings
- brake caliper brush for removal of brake dust and dirt from the brake caliper
- brass brake caliper brush for cleaning aluminium brake calipers
soft brass bristles facilitate damage-free cleaning
- special tool for brakes for installing and removing spring plates and the holding device of brake linings on drum brakes, e.g. on VW, Seat, Skoda, Opel and Renault with rear drum brakes
- brake caliper file, extra slim style (width 10 mm), especially appropriate for Japanese vehicles, for removal of brake dust, rust and dirt from the brake caliper
- brake line flare nut wrench for screwed connections on brake lines at the front and rear axle, Straight slot with 10x11 6-point
- assembly tool for installing and removing the draw spring of hand brake shoes, e.g. on MERCEDES-BENZ passenger cars with rear disc brakes as well as on VW LT since 1997
- brake spring installer for pressure spring of the parking brake
- brake cable pliers for removing and replacing the hand brake cable, the pliers compress the return springs so far that the cable may be easily removed and replaced.



DN-B1017**Brake Piston Wind Back Tool**
筒式刹车风泵

Double end tool. Enables retraction of the piston on rear brake callipers allowing new brake pads to be installed.
Pin Diameter: 6mm
Distance Between Pin Centres: 22, 33mm

**DN-B1018****Brake Piston Spreader Tool**
鸭掌式刹车分泵

ensures parallel piston retraction avoiding damage to the piston seals. For use on opposed fixed and single piston sliding calipers. Maximum Spread: 90mm

**DN-B1019****Brake Piston Spreader**
碟式刹车分泵

Chemically blackened steel spreader plates. An essential tool for retracting the brake piston to allow insertion of new brake pads. Suitable for most ATE, Bendix, Delco and Girling callipers. Maximum Spread: 70mm

**DN-B1034****Disc Brake Piston Spreader**
碟式刹车分泵

This disc brake piston spreader has been designed for quad pistons fitted to BMW, Mercedes-Benz and other vehicles. Maximum working range 88mm
•Suitable for use on quad pistons.
•Applications include Mercedes-Benz & BMW etc.
•Maximum working range 88mm.
•Manufactured from selected steel.
•Time saver.

**DN-A1004****2Ways Oil Filter Wrench**
扁脚机油滤清器扳手

Satin chrome finish steel construction with 3/8" & 1/2" Sq drive. Also suitable for use with a 21mm (13/16") spanner. Claws grip filter tighter as more torque is applied.

DN-A1006**2Ways Oil Filter Wrench**
圆脚三爪滤清器扳手

Item No	Size	Driver
DN-A1004	Ø63-103mm	3/8" & 1/2" Sq
DN-A1006	Ø65-110mm	3/8" & 1/2" Sq

DN-A1005**Chain Oil Filter Wrench**
链式机滤扳手

Used for gripping round and irregular shaped items, tubes and piping. Ideal for oil filters, hot radiator caps and hub caps.
handle 6", chain length: 18"

**DN-A1065****Two Ways Oil Filter Wrench**
德式机油滤清器扳手

Heavy duty drop forged steel two way oil filter wrench with serrated jaws to grip the filter securely. Spring loaded cam action reverses the drive direction for either removal or replacement. For use when access to filter is only from the end. Drive Size: 1/2" Square drive or 21mm wrench.

Item No	Size	Driver
DN-A1065	Ø60-80MM	21mm & 1/2" Sq
DN-A1066	Ø80-105MM	21mm & 1/2" Sq
DN-A1132	Ø110-140MM	21mm & 1/2" Sq

DN-A1049**9pcs Cap Oil Filter Wrench**
9件帽式滤清器扳手

Caps sizes:
64.5mm*14-pt, 64.5mm*14-pt, 88.8mm*15-pt, 74.2mm*14-pt, 86.6mm*16-pt, 63-83mm, 27mm*6-pt, 32mm*6-pt, 36mm*6-pt
Application: audi, bmw, mercedes, opel, renault, volvo, kia, hyundai, ford, vw, skoda, citroen, mini

**DN-A1118****7pcs Oil Filter Socket Set**
7件滤清器扳手组套

Low profile design perfect for use On cartridge style filters
- contains following sizes:
- 24 mm (misc. Bmw)
- 27 mm (mercedes a-class)
- 32 mm (opel astra g, corsa b, zafira)
- 36 mm (misc. Bmw, ford mondeo 2.0, Transit 2.0, d, opel vectra b, zafira, Misc. Mercedes)
- 38 mm opel vectra 2.0d
- 29 mm (misc. Models)
- 30 mm (misc. Models)
- drive: 3/8

**DN-A1168****10PC Cap Oil Filter Wrench**
10PC机油格组套

63-83mm, 90mm*8pt, 85mm*15pt, 74mm*14pt, 101mm*16pt, 65mm*14pt, 101mm*15pt, 67mm*14pt, 79mm*14pt, wrench

**DN-A1012****15pcs Cap Oil Filter Wrench Set**
15件帽式滤清器扳手

Item No	Content
DN-A1012	65 mm x 14-pt., 67 mm x 14-pt., 74 mm x 14-pt., 73 mm x 14-pt., 74 mm x 15-pt., 79 mm x 15-pt., 84 mm x 18-pt., 89 mm x 15-pt., 90 mm x 15-pt., 95 mm x 15-pt., 76 mm x 12-pt., 80 mm x 15-pt., 101 mm x 15-pt., 92 mm x 15-pt.

DN-A1067**5pcs Cap Oil Filter Wrench**
5件帽式滤清器扳手组

Includes: 24mm for cadillac, 27mm, 36mm for mercedes, vw, cadillac, buick saturn, saab, 32mm for gm, saturn and saab, 38mm for vauxhall/vectra

**DN-A1062****Fuel Sender Spanner**
三爪式机油箱盖拆装器 (调整型)

For the removal and replacement of the retaining ring on fuel tank sender units. 25mm drive bolt with 55mm long arms. Manufactured from quality steel. Display packed.

**DN-A1014****Chrysler Fuel Pump Module Wrench**
汽油箱盖拆卸器

Removes and installs the fuel pump retaining ring that holds the fuel pump module onto the gas tank. Works on most 1994-2005 Chrysler vehicles, and 1995-2004 Jeep vehicles.

**DN-A1139****Adjustable Fuel Tank Lid Remover Wrench**
For BMW, VW, AUDI
可调汽油箱盖拆卸器

Removes and installs the fuel pump retaining ring that holds the fuel pump module onto the gas tank. Tool is Chrome Plated Steel with 3/8" and 1/2" ratchet drives - 1/2" adapter included. Radius'd Spanner grips are Black Oxide Steel. Spanner tool range is 2" (50mm) to 7-1/4" (185mm) adjustable

**DN-A1029****4pcs Expert Hose Clamps**
U型封管夹

Special design to stop the flow without damaging the hose. Applicable: 10MM (3/8") 15MM (5/8") 25MM (1") 45MM (1-3/4")

**DN-A1011****Mechanic's Stethoscope**
汽缸听诊器

Stethoscope locates the source of engine noise quickly. Listen for trouble by tracing the sound of flowing water, oil, gas or steam. Identify piston slap, worn gears, faulty valves, waterpump failure, damaged gaskets and defective bearings. Stethoscope has a shock-resistant handle and disassembles for storage.

**DN-D1100****GM Torsion Bar Unloading Tool**
GM扭杆拆卸工具

Rugged tool is built for GM's K-3500 series trucks with heavy duty chassis and a larger torsion bar. It features a larger C-frame opening to accommodate beefier torsion bars. The tool holds the torsion bar while you make adjustments. Also works on 1988 to 2003 GMC and Chevrolet 1/2, 3/4 and 1 ton pickups; the S-10 Blazer and S-15 Jimmy, 4WD pickups with 4.3LV-6 engines; and 1991 to 2001 Oldsmobile Bravada.



DN-D1059**4pcs Steering Rack Knuckle Tool Set**
4件套轴接头工具

This tool set allows a quick and easy removal and replacement of the inner steering ball joint without the need to dismantle the steering rack from the bulkhead. Automatic clamping of the joint heads 3 exchangeable drive head range; 30-35mm, 35-40mm, 40-45mm. Works with 1/2" ratchet or 27mm socket.

**DN-D1038****Steering Rack Knuckle Tool**
轴接头工具

Remove and replace the axial joint. Hex part on the end of tool: work with 27mm wrench or 1/2" DR. ratchet. L: 400mm. Capacity: Φ35~45mm.



Item No	Length	Capacity
DN-D1038	400mm	35~45mm
DN-D1038-A	400mm	28~35mm

DN-A1109**Variable Pin Spanner Wrench**
可拆装扳手组套

Universal design fits many different types of pulleys having slots or holes, including camshaft pulleys and crankshaft pulleys. Wrench is adjustable from 1-1/4 inch to 5 inches; works with a 1/2 inch drive ratchet or breaker bar. Replacement Parts: DN-A1109-1: 3.5 mm pin, DN-A1109-2: 4 mm pin, DN-A1109-3: 4.5 mm pin, DN-A1109-4: 5 mm pin, DN-A1109-5: 6 mm pin, DN-A1109-6: 7 mm pin, DN-A1109-7: 10 mm pin, DN-A1109-8: Handle.

**DN-A1074****Flow Meter Common Rail Set**
柴油喷油嘴测试器

comprehensive kit essential for determining the return flow from diesel injectors. The fuel return flowmeters allow precise measurement for swiftly diagnosing faulty or damaged injectors. Supplied with a selection of adaptors and is capable of measuring six injectors simultaneously. Packed in portable plastic case. Contents: 6 x manometer tubes for use when cranking engine, 6 x reservoir bottles for use when running the engine for longer periods, 12 x push fit adaptors, Anodized hanging bottle rack, 6 x Bosch Injector adaptors (No.1), 6 x Siemens Injector adaptors (No.2), 6 x Denso Injector adaptors (No.3).

**DN-A1152****Bomba Refrigerante Opel 2.2 16v. (cadena)**
发动机冷却泵拆卸工具

Coolant Pump for Opel 2.2 16v dual gasoline camshaft (chain). It retains the pinion of the coolant pump in situ when the pump is removed, thus minimizing the level of motor dismantling. Models: Astra-G + H, Speedster / VX220, Vectra-B + C, Signum, Zafira- A + B. Valid for engines: Z22SE, Z22YH.

**DN-A1003****Valve Spring Compressor**
免拆式凡尔钳实心

Used to compress valve springs for removal or installation. suit for car & motorcycle. kit includes 16mm, 19mm, 23mm, 25mm, 30mm valve spring retainer adapters.

**DN-A1002****Valve Spring Compressor**
免拆式凡尔钳

Used to compress valve springs for removal or installation. suit for car & motorcycle. kit includes 16mm, 19mm, 23mm, 25mm, 30mm valve spring retainer adapters.

**DN-C1001****12pcs Oil Drain Plug Key Set**
四角六角出油咀

Tool kit for removing oil drain plugs from most European design vehicles. Consists of: 1pc T-bar with 3/8" Drive, 1pc Drain plug Socket-Hex 3/8", 1pc Drain plug Socket-Hex 8mm, 1pc Drain plug Socket-Hex 9mm, 1pc Drain plug Socket-Hex 10mm, 1pc Drain plug Socket-Hex 12mm, 1pc Drain plug Socket-Hex 14mm, 1pc Drain plug Socket-Hex 17mm, 1pc Drain plug Socket 8mm, 1pc Drain plug Socket 3/8", 1pc Drain plug Socket 11mm, 1pc Drain plug Socket 13mm.

**DN-C1014****21pcs Oil Drain Plug Key Set**
21件四角六角出油头组

Suitable for sump plugs on engine, gearbox and back axle. Contents: Hex key socket: 8, 9, 10, 12, 13, 14, 17 mm, Square socket: 5/16", 3/8", 7, 8, 10, 11, 12, 13, 14 mm, Torx socket: T45, Triangular socket: 10mm, Spline (TAMPER) socket: M16, Square drive socket: 10mm, 3/8" drive sliding T-handle.

**DN-G1040****Manual Fluid Extractor(9L)**
9L手动抽接油机

2. Manual fluid extractor, can be used to extract many kinds of non-explosive liquids. 3. Completely using hand pump when you without shop air. 4. New safety design, when the tank is full of liquid, the mechanism will be shut off automatically. 5. One man, fast, clean and easy operating. 6. None electric spark, safety for workshop. DESCRIPTION: MANUAL FLUID EXTRACTOR(9 LITERS) CAPACITY 9.0 L PACKAGE COLOR BOX

**DN-G1041****Pneumatic Fluid Extractor**
5.5L抽接油机

1. A versatile, portable, air operated Fluid Extractor for extracting fluids from crankcases, transmission case, cooling systems and power steering reservoirs. 2. This ideal tool designed to be used with many kinds of non-explosive liquids. 3. Completely automatic using normal shop air. 4. New safety design, when the tank is full of liquid, air inlet mechanism will be shut off automatically.

**DN-G1042****Pneumatic Brake Bleeder Kit**
气刹油交换机

This brake bleeder kit is suitable for bleeding brake and clutch systems for vehicles with an ABS system. You'll be able to perform a one-man operation possible in your own garage, and it is suitable for a professional workshop. The bleeder uses standard workshop air supply (10 - 40 psi) to efficiently flush and refill the brake system on most vehicles. The low pressure tank can be pre-charged with compressed air, making the unit fully portable. This brake bleeder kit is a great time saver, especially if you service brakes on a regular basis. Contains a wide range of European, Japanese and US vehicle adaptors. Includes 1 adaptor kit, 1 bleeder tank with a pressure gauge, 1 collection bottle, and 1 fluid hose with a quick connector.

**DN-G1043****ATF Oil Extractor & Dispenser**
9升气动抽排二用加油机

Use to extract, transfer and dispense fluid quickly, safety and cleanly. Non-spark, one man in same step can operate. Provide with the safety valve, pre-setting 43 psi (3 Bar), the exceed pressure will be relief automatically. Provide with the pressure gauge, can be read & control the pressure in the tank more easily. 8.5L capacity reservoir with volume guide. With 1M Nylon hose & Dispenser 2M PU hose w/one touch controller gun for easy operating. With 8 pcs one touch adaptors for ATF oil transportation and Screw valve to allow easy change the action of extractor or dispenser. High flow control valve for extract fluid more quickly. Handle trigger with lock. Air inlet: 1/4" Working pressure: 40 ~ 170 PSI Avg. Air Cons: 2 CFM Max.capacity: 8500 C.C Temperature range: -3F ~ 140F

**DN-G1044****Refilled Bottle**
1升补油灌

Automatic refilling of the master cylinder reservoir while bleeding. CAPACITY: 1.0 L

**DN-G1034****6L Pneumatic ATF Oil&Liquid Dispenser With 13Pcs ATF Adaptor**
6L双向气动油/流体更换机

Use to extract, transfer and dispense fluid quickly, safety and cleanly. Non-spark, one man in same step can operate. Provide with the safety valve, pre-setting 43 psi (3 Bar), the exceed pressure will be relief automatically. Provide with the pressure gauge, can be read & control the pressure in the tank more easily. Provide 2 way control valve for dispensing more safety. 6L capacity reservoir with volume guide. Nylon hose X 1M & Dispenser 2M PU hose w/one touch controller gun for easy operating. With 8 pcs one touch adaptors for ATF oil transportation. Screw valve to allow easy change the action of extractor or dispenser. High flow control valve for extract fluid more quickly. Copper material and one touch coupler design for easy operating. Handle trigger with lock.



Item No	Max.capacity	Air inlet	Avg.Air cons	Temperature range
DN-G1034	6000 C.C	1/4"	2 CFM	-3F ~ 140F
DN-G1035	8000 C.C	1/4"	2 CFM	-3F ~ 140F

DN-G1037**Engine Oil filling Funnel(aluminum)/DN-G1074(Plastic)**
汽车发动机机油加油漏斗

Topping-up funnel is made of strong plastic with bayonet fitting. Allows for fast oil filling without spillage or waste. Great for vehicles with internal baffles or shields. Color-coded adaptors fit oil filler holes on many European, Asian, and US vehicles. 2 liter universal funnel fits all adaptors. Special angled extension with locking design allows access in hard-to-reach applications. The funnel with the matching connector adapter is mounted in place of the sealing cap on the oil filter cap on the valve. To prevent unintended dripping oil on the cylinder head, cylinder block, intake manifold/exhaust manifold...etc.



DN-M1001**3pcs Exhaust Pipe Expander Set
汽车尾管扩张器**

Ideal for fitting aftermarket components to standard exhausts. Used to expand a length of pipe in equal proportions so the pipe is the same diameter and not tapered. Ensures A perfect fit with on leaks and also removes dents and clamp marks. Supplied in carry-case.

capacity:
Small: 30-44mm
Medium: 38-61mm
Large: 55-85mm
Drive: Small: 16mm Hex
Medium: 17mm Hex
Large: 19mm Hex

**DN-B1056****1/2 "Driving Stud Extractor
1/2英寸螺栓取出器**

Grips studs up to 3/4" diameter
Removes studs, rounded nuts or bolts
Cam lock system grips securely, won't bind
Hardened teeth with black oxide finish
Use with 1/2" drive ratchet or 1/2 drive extension.

**DN-A1015****13pcs Craftsman Impact Driver
13件打击起子组**

Great product for loosening over-tightened or corroded screws - or when extra tightening torque is needed.
Able to convert the momentum of hammer to the twisting force of screwdriver, pulling out the hard-to-remove screw

**DN-D1129****Wrench Extender
扳手延长杆**

Will work on almost any wrench
To loosen tight connections on hard to reach areas
Drop forged
Extra 1/2" square
13-1/2" Length



Item No	Length(mm)	Extra
DN-D1129	34mm	1/2" square
DN-D1129-A	38mm	1/2" square

DN-B1003**Wheel Weight Plier
平衡钳**

For removing & installing wheel weights.
The drop forged heat treated tool is balanced and heavy to swing like a hammer.
Designed for tough usage.

**DN-B1002****Wheel Weight Plier
平衡钳**

For removing & installing wheel weights.
The drop forged heat treated tool is balanced and heavy to swing like a hammer.
Designed for tough usage.

**DN-M2001****Exhaust Tool Set
扩张器套装**

Tool set for servicing exhaust systems cuts pipe up to 3-1/2-inch
used for pipe dent repair and fitting include chain cutter, nut splitter and expander

**DN-D1034****CV Joint Removal Tool 95mm
球笼万向拆卸器**

Quickly removes the CV joint from the drive shaft without damaging the joint, and keeps hands free for releasing retaining circlip.
Reduces risk of damage to transmission.
Saves on labour time and suitable for most vehicles.

**DN-B1035-B****Mechanic's Creeper
修车躺板**

One piece, moulded high impact polymer creeper with two integral tool trays and padded headrest.
Low profile for greater under vehicle clearance.
Features six Ø75mm swivel castors for easy manoeuvrability.



Item No	Size
DN-B1035-B	36"
DN-B1035-C	40"

DN-F2001**Iveco Axle Nut Socket
105mm/IVECO
轮轴套筒(105mm)**

SW	outer ϕ	H	ϕ
mm	mm	mm	mm
105	134	118	36

- Six sided drive SW 36.
- Positive drive of the axle nut.
- Any extensive slipping is avoided.
- Milled out profile.
- Robust execution.
- Can be used with an impact wrench or torque wrench.
- Special steel.

Application range: Iveco Eurotech Cursor HA, etc

DN-F2002**Iveco Axle Nut Socket
110mm/IVECO
轮轴套筒(110mm)**

inner ϕ	outer ϕ	H	ϕ
mm	mm	mm	mm
110	134	118	36

DN-F2003**BENZ REAR WHEEL NUT SOCKET
BENZ后轮轴套筒 116mm**

inner ϕ	outer ϕ	H	Stud ϕ	Stud width ϕ
mm	mm	mm	mm	mm
105	125	180	116.5	9.8

- Internal square drive to DIN 3121 / ISO 1174 . Rigid Locating tube.
- High accuracy of fit.
- Extremely robust execution.
- Suitable for high tightening and loosening torque.
- Special steel.

Application range:
Mercedes Benz Actros Rear axle, HL/HL 8 (Hypoid), etc.

DN-F2004**MAN TGA Frontalxe nut socket 93mm
MAN TGA前轮轴套筒(93mm)**

inner ϕ	outer ϕ	H	Stud ϕ	Stud width ϕ
mm	mm	mm	mm	mm
133	147.5	110	118	11

- Internal square drive to DIN 3121 / ISO 1174 . Six sided drive SW 60.
- Optional with sleeve Locating tube.
- High accuracy of fit.
- Extremely robust execution.
- Suitable for high tightening and loosening torque.
- Special steel.

Application range:
MAN TGA Front axle, V9-82L-01(Disk brake/ABS), etc.

DN-F2005**MAN TGA DRIVE AXLE NUT
SOCKET 117mm
MAN TGA 驱动轴螺母套筒**

inner ϕ	outer ϕ	H	Stud ϕ	Stud width ϕ
mm	mm	mm	mm	mm
133	147.5	155	118	11

- Internal square drive to DIN 3121 / ISO 1174 . Six sided drive SW 60.
- Optional with sleeve Locating tube.
- High accuracy of fit.
- Extremely robust execution.
- Suitable for high tightening and loosening torque.
- Special steel.

Application range:
MAN TGA 460 drive axle, V9-82L-01(Disk brake/ABS), etc.

DN-F2006**MAN front wheel hub installer
MAN前轮轴安装器**

inner ϕ	outer ϕ	ITEM	Nut specification	Screw specification
mm	mm			
50.1	153.7	SF-9005E-04 SCREW	Tw30x6	M40x1.5

- To install front wheel hub of MAN.
- There is a bearing inside the tool to save power.
- Use this axle with spanner spin the screw.
- Robust Execution.
- Very Convenient Tools.
- European truck repair tool.
- Application range : MAN Truck.
- Product specifications are as follows:

DN-F2007**MAN TRUCK AXLE BEARING EXTRACTOR
MAN轮轴轴承拆卸器**

inner ϕ	outer ϕ	H	ϕ
mm	mm	mm	mm
107.6	169.5	240	30

- For replace MAN truck hub bearing and remove the old bearings essential tool.
- Turn the screw to remove the bearing.
- To be used with wrench.
- European truck repair tool.
- Specialty tools.
- Application range: Change the MAN Truck Hub bearing.
- Product specifications are as follow:

DN-F2008**MAN TRUCK AXLE BEARING EXTRACTOR
MAN轮轴轴承拆卸器**

inner ϕ	outer ϕ	H	ϕ
mm	mm	mm	mm
112	169.5	240	30

- Best tool for replacing MAN tractor hub bearings and removing the old bearings essential tool.
- Turn the screw and remove the old bearing.
- European truck repair tool.
- Very convenient tools.
- Specialty tools.
- Application range:
MAN Truck tractor 33460/ 410/ 414 with front disc brake bearing.
- Product specifications are as follow:

DN-F2009**MAN FRONT WHEEL HUB INSTALLER
MAN前轮HUB安装器**

inner ϕ	P.C.D. ϕ	H	ϕ
mm	mm	mm	mm
87.1	166	118.2	29.8

- When MAN axle bearing is stuck due to it's over heat, use this tool with air wrench for labor saver and easier removal.
- Use this axle with spanner spin the screw.
- Extremely robust execution.
- European truck repair tool.
- Very convenient tools.
- Application range: MAN new type truck.
- Product specifications are as follows:

DN-F2031

HALDEX Brake Linkage Adjuster Extractor/HALDEX 刹车连杆调节器拆卸工具



- Certain stop through ring shaped bearing area
- Use with 32mm wrench.
- Applicable: HALDEX

DN-F2032

BPW Brake Linkage Adjuster Extractor BPW 刹车连杆调节器拆卸工具



- Substantial construction for drawing off firmly sitting
- BPW brake linkage adjusters.
- Suitable for older and automatic linkage adjusters.
- Use with 32mm wrench.

DN-F2033

BPW Rear Hubcap Nut Socket, 95mm BPW后轮轴盖套筒(6.5~9T)(95mm)



- Designed for extracting the rear axle cover.
- Size: 3/4" DR. x 95mm (oval).
- Overall length: 70mm
- Applicable: BPW 6.5~9tons

DN-F2034

BPW Rear Hubcap Nut Socket, 109mm, Dr. 41mm BPW后轮轴盖套筒(12T)(8point)



- The rear axles cover extractor socket.
- Size: 1" DR. x 109mm (8PT)
- Applicable: BPW-12T

DN-F2035

BPW Rear Hubcap Nut Socket, 111mm, Dr. 41mm BPW后轮轴盖套筒(12T)(椭圆形)



- The rear axles cover extractor socket.
- Size: 1" DR. x 111mm (oval)
- Applicable: Bpw-12T

DN-F2036

BPW Rear Hubcap Nut Socket, 120mm, Dr. 41mm BPW后轮轴盖套筒(16T)(8point)



- The rear axles cover extractor socket.
- Size: 1" DR. x 120mm (8PT)
- Applicable: BPW-16T

DN-F2037

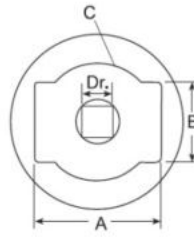
BPW Axle Extractor, 98mm BPW轮轴拆卸器 - M155 x 3.0



- Special designed to remove the wheel axle with outer thread on BPW.
- Use with 49mm and 30mm wrench
- Applicable: For former model of 16 tons truck.

DN-F2038

Wheel Capsule And Axle Nut Socket 轮轴螺丝套筒



ITEM NO.	A	B	C	H	□	SUITABLE
	mm	mm	mm	mm	(inch)	
DN-F2038	65	40	60	68	3/4	ECO-axle
DN-F2039	80	50	72	68	3/4	ECO-axle
DN-F2040	85	50	80	68	3/4	ECO-front axle 13t
DN-F2041	95	40	90	68	3/4	
DN-F2042	111	45	107	72	3/4	
DN-F2043	120	48.5	115	72	3/4	ECO-axle

- For cleaning, easy loosening and tightening of flat oval wheel capsules and axle nuts, e.g. on BPW axles.
- For the removal and installation of grease capsule on BPW axles.
- Suitable for exact torque with a 3/4" square drive.
- Ideally suited for very high tightening and loosening torques.
- For machinery usage.

DN-F2044

BPW Axle Extractor, 125mm BPW轮轴拆卸器 - M125x2.0



Thread	Outer size	Height	Applicable
M125X 2.0	93.1mm	9.4mm	BPW 12 tons trailer

- Special designed to remove the wheel axle with outer thread on BPW.
- Use with 49mm and 30mm wrench
- Applicable: For former model of 16 tons truck.

DN-F2045

BPW Axle Extractor, 135mm BPW轮轴拆卸器 - M135x2.0

**DN-F2046**

BPW Axle Extractor, 136mm BPW轮轴拆卸器 - M136x2.5

Item	Thread	Outer size	Height	Applicable
DN-F2045	M135X 2.0	150mm	78mm	BPW ECO 10~12 tons old model
DN-F2046	M136X 2.5	150mm	78mm	BPW ECO PLUS 8~12 tons new model

- Special designed to remove the wheel axle on BPW.
- Use with 43mm and 30mm wrench

DN-F2047

SCANIA CAMSHAFT ROTATOR (Dr. 1/2") SCANIA卡车凸轮轴转动器



- Designed to rotate the crankshaft when correct the timing of engine.
- Use with 1/2" drive wrench.
- Applicable: SCANIA after 1996

DN-F2048

SCANIA (340) ELECTROMAGNETIC INJECTION VALVE CAP SOCKET, (1/2", 8POINTS, 38mm) SCANIA 340电磁喷油嘴盖套筒



- 8 points.
- For tightening loosening the electromagnetic injection valve cap.
- 1/2" Dr, inner ϕ 38mm, outer ϕ 45mm, 100mm(H).
- Suitable for SCANIA(340)trailer, SCANIA GENUINE.

DN-F2049

SCANIA TRANSMISSION BACK OIL SEAL INSTALLER SCANIA变速箱后油封安装器



- Designed to install the transmission oil seal easily and without causing damage.
- Applicable: SCANIA transmission flange shafts on transmission and rear axle Part no. 1 502 384 / 1 502 385

DN-F2050

SCANIA FRONT WHEEL COMPRESSOR SPACER SOCKET SCANIA前轮避震器套筒 (28mmX37mm Dr. 3/4")



- This special socket removes.
- European truck repair tool.
- 3/4" Dr, inner ϕ 28.5mm, outer ϕ 53.9mm, 50mm(H).

DN-F2051

SCANIA BACK WHEEL COMPRESSOR SPACER SOCKET SCANIA后轮避震器套筒



Scania Rear Wheel Shock Absorber Spring Washer Socket, (34mmX56mm Dr. 3/4")

- This special socket removes.
- European truck repair tool.
- 3/4" Dr, inner ϕ 34mm, outer ϕ 56mm, 50mm(H).

ITEM NO.	Dr.(in.)	Inner(mm)	Outer(mm)	H(mm)
DN-F2050	3/4	28.5	53.9	50
DN-F2051	3/4	34	56	50
DN-F2052	3/4	34.5	63.9	50.1
DN-F2053	3/4	100	123	84

DN-F2057

SAF Axle Nut Socket, 85mm 轮轴套筒140mm



- Made from special steel and robust execution to remove the axle nut.
- Any extensive slipping is avoided.
- Use with an impact wrench or torque wrench, drive with 36mm wrench.
- Overall length: 82mm.
- Applicable: SAF axle trailers.

DN-F2054

Engine Crank Alignment DAF DAF曲轴校正器(4.5期环保)



- Designed to adjust the engine for correct position.
- Use with 1/2" drive wrench.
- Applicable: XF105, Euro5... etc.

DN-F2055

Engine Crank Alignment DAF DAF曲轴校正器(三期环保)



- Designed to adjust the engine for correct position.
- Use with 24mm wrench.
- Applicable: DAF: CF65, CF75, CF85, F65, F75, F85, F95, Xf95

DN-F2056

Calliper Adjuster Socket 卡钳调整套筒5齿



- Special 5 teeth designed to adjust the brake caliper.
- Overall length: 46mm
- Use with 36mm wrench.
- Material: SCM440.
- Applicable: most of European trucks, SCANIA, VOLVO...etc

DN-F2052

Scania Damper Rod Socket For Rear Axles SCANIA后轮阻尼套筒



Scania Damper Rod Socket For Rear Axles, (34mmX46mm Dr. 3/4")

- This special socket removes.
- European truck repair tool.
- 3/4" Dr, inner ϕ 34.5mm, outer ϕ 63.9mm, 50.1mm(H).

DN-F2053

Scania Rear Wheel Nut Socket (100mm, 8 POINTS, Dr. 3/4") SCANIA后轮轴套筒



Scania Rear Wheel Nut Socket (100mm, 8 POINTS, Dr. 3/4")

- Control the nut with slide rod to adjust bearing.
- This eight sided 100mm socket is specifically for rear wheel nut sockets on SCANIA trucks.
- 3/4" Dr, inner ϕ 100mm, outer ϕ 123mm, 84mm(H).

DN-F2058

SAF Axle Nut Socket, 140mm SAF 轮轴套筒140mm



- Made from special steel and robust execution to remove the axle nut.
- Use with an impact wrench or torque wrench, drive with 32/46 mm wrench.
- Forward tension with 32mm wrench is at 150 N-m.
- Overall length: 135mm.
- Application range: SAF Euro axle, etc.

DN-F2010**REAR AXLE EXTENSION TUBE - M100 x 1.5**
后轴螺母保护管 - M100x 1.5

Thread	inner ϕ	outer ϕ	L
	mm	mm	mm
M100x1.5	96	104.6	360



- For the removal and installation of wheel hubs.
 - Extension tube for the protection of the wheel bearing and threaded bolts.
 - With knurling and bore for toggle lever.
- Application range: MAN TGA rear axle e.g. HY 1350
- Product specifications are as follows:

DN-F2011**SCANIA WHEEL NUT SOCKET (8T)**
SCANIA 轮轴套筒(8齿)

inner ϕ	outer ϕ	Stud	H	\square
mm	mm	ϕ mm	mm	
103	119	9.5	100	3/4"



- With 3/4 " square drive to DIN 3121 / ISO 1174
 - Special profile with 8 external studs
 - Positive drive of the axle nut
 - Any extensive slipping is avoided
 - Milled out profile
 - Robust execution
 - Can be used with an impact wrench or torque wrench
- Application range: Scania 420 (heavy duty tipper axis) removal and installation of the mounting nut on the axle bearing

DN-F2012**SCANIA FRONT WHEEL NUT SOCKET (80mm)**
SCANIA 前轮轴套筒 (80mm)

inner ϕ	outer ϕ	H	\square
mm	mm	mm	
83	103	74	1"



- Positive drive of the axle nut
 - Any extensive slipping is avoided
 - Milled out profile
 - Robust execution
 - Can be used with an impact wrench or torque wrench
- Application range:
SCANIA front axle (e.g. 124L / 144L)
Series 4 from 96 for vehicles above 16 tons
Removal and fitting of the axle nuts in front of the brake disc

DN-F2013**BENZ & MAN REAR AXLE NUT SOCKET WITH TUBE (87mm)**
BENZ, MAN 后轮轴套筒 (87mm)

inner ϕ	outer ϕ	Locating tube ϕ	H	Stud	Stud width
mm	mm	mm	mm	ϕ mm	ϕ mm
80	95	49	175	87	10

- Internal square drive to DIN 3121/ISO 1174.
 - Rigid locating tube.
 - Optional with expander sleeve(bayonet locking system).
 - High accuracy of fit.
 - Extremely robust execution.
 - Suitable for high tightening and loosening torque.
 - Special steel.
- Application range:
Mercedes Benz Atego Rear axle,Vitaro 814, MAN, etc

DN-F2014**BENZ & MAN REAR AXLE NUT SOCKET (101MM)**
BENZ, MAN 后轮轴套筒 (101mm)

inner ϕ	outer ϕ	H	Stud	Stud width
mm	mm	mm	ϕ mm	ϕ mm
95	115	110	101	11.5



- Internal square drive to DIN 3121 /ISO 1174.
 - Optional with sleeve Locating tube.
 - High accuracy of fit.
 - Extremely robust execution.
 - Suitable for high tightening and loosening torque.
 - Special steel.
- Application range:
Mercedes Benz und MAN 10+13t Reduction axle,
Hypoid-and Trailer axle NR7/4,Omnibus 0305 G + 0405G, etc.

DN-F2015**BENZ & MAN CRANKSHAFT ALIGNMENT TOOL 2 GEARS**
BENZ, MAN 曲轴校正器(2齿)

No.of gears	H	\square
	mm	
9	90	1/2"



- Allows the engine crank to be manually adjusted
 - Allows pinpoint accuracy calibration
 - Adjusting screw in the clutch housing
 - Ideal for adjustments to the engine
- Application range:Mercedes Benz 6- / 8- and 10-cylinder engines, MAN 12-cylinder engines, etc.

DN-F2016**BENZ & MAN CRANKSHAFT ALIGNMENT TOOL 3 GEARS**
BENZ, MAN 曲轴校正器(3齿)

No.of gears	H	\square
	mm	
9	120	1/2"



- Allows the engine crank to be manually adjusted
 - Allows pinpoint accuracy calibration
 - Adjusting screw in the clutch housing
 - Ideal for adjustments to the engine
- Application range: Mercedes Benz Actros and Atego,MAN 5-/6- and 8-cylinder engines - D25/28, etc.

DN-F2017**UNIVERSAL WHEEL AXLE NUT REMOVE & INSTALL KIT**
插销型后轮螺母拆装工具

- Special designed to loose and tight the rear wheel nut.
 - Both sides of pin are adjustable.
 - Different sizes of pins are suit for different kinds of cars.
 - Applicable: Over 2 tons vehicles with circular nuts.
 - Contents: Pins: ϕ 5.5, ϕ 6.8, ϕ 9.1.
- Nut: M8xP1.25

DN-F2018**Man oil filter wrench**
MAN机油芯扳手

- Designed for removing the installing the oil filter on MAN truck.
- Use with 1/2" drive wrench.
- Size: 135mm/18P
- Applicable: MAN 18~48 tons truck. Series F2000, FE and TGA engine (406, 410, 414, 440, 460)

**DN-F2019****TRUCK INJECTION NOZZLE SOCKET**
卡车喷嘴套筒

- The tool removes and installs diesel injected nozzle.
- The bottom four comers.
- Europe truck repair tool.
- ϕ 24mm, 4 teeth, inner ϕ 22.2mm, outer ϕ 32mm, 84.5mm(H).
- Suitable for MAN 422/403. Benz truck,SCANIA.

**DN-F2020****MAN & Benz truck diesel injection valve socket**
MAN&Benz卡车喷射阀门套筒

- Remove and install diesel injection valve.
- European truck repair tool.
- 4 teeth, inner ϕ 22.2mm, outer ϕ 28mm, 72mm(H).
- Suitable for MAN 422/403. Benz truck,SCANIA.

**DN-F2021****MAN&BENZ Differential Rear Nut Socket Dr.3/4/BENZ, MAN差速器后螺母套筒 (113mm)**

- Special 6 teeth designed to remove the differential rear nut.
- Made from special steel for high tightening and loosening torque.
- Applicable: MAN, Mercedes Benz truck.

**DN-F2022****Flywheel Rotating Tool with one Sprocket (1 gears)**
MAN飞轮旋转器

- Designed for accurate rotating of the engine for
- valve setting or other maintenance and service work.
- Use with 1/2" drive wrench.
- Overall length: 61mm
- Applicable: MAN engines D20, D25, D26, D28...

**DN-F2023****BENZ&MAN Clamp Nut Socket,56 mm**
BENZ, MAN 卡车轮轴套筒**BENZ&MAN Clamp Nut Socket,56 mm**

- For professional loosening and tightening the clamp nut on the axle stub.
- Suitable for exact torque with a 3/4" square drive.

DN-F2024**BENZ&MAN Clamp Nut Socket,60 mm**
BENZ, MAN 卡车轮轴套筒**BENZ&MAN Clamp Nut Socket,60 mm**

- For professional loosening and tightening the clamp nut on the axle stub.
- Suitable for exact torque with a 3/4" square drive.

DN-F2025**MAN&BENZ Drive Axle Nut Socket (Dr,3/4,H60,6 TEETH)**
BENZ, MAN传动轮套筒(6齿)

- Special designed with 6 teeth designed for removing the drive axle nut.
- Made from special steel for high tightening and loosening torque.
- Applicable: MAN, Mercedes Benz truck.

**DN-F2026****MAN Truck TransmissionSocket,53mm**
MAN卡车变速箱套筒-53mm

- Designed to remove the transmission nut on MAN trucks
- Size: 3/4" DR x 53.5mm / 4PT
- Overall length: 75mm

**DN-F2027****Axle Nut Socket 95 mm With Guide Band**
轴芯套筒

- Made from special steel and robust execution to remove the axle nut.
- Any extensive slipping is avoided.
- Use with an impact wrench or torque wrench, drive SW36.
- Overall length: 157mm
- Applicable: Mercedes Benz axle trailers

**DN-F2028****BENZ Groove Nut Socket For Rear Axle Nut**
BENZ后轮轴套筒-123.5mm**BENZ Groove Nut Socket For Rear Axle Nut**

- Use with 32mm wrench.
- Special designed for dismantling and assembling the rear axle nut.
- Made from special steel for high tightening and loosening torque.
- Overall length: 310mm
- Applicable: Mercedes Benz Citaro.

**DN-F2029****Benz Groove Nut Socket For Differential Nuts**
BENZ差速器套筒 (72mm)

- Use with 32mm wrench.
- Special designed for removing and installing the differential nuts.
- Made from special steel for high tightening and loosening torque.
- Overall length: 60mm
- Applicable: Mercedes Benz Citaro, Evo bus.

**DN-F2030****MAN TGA Front Axle Nut Socket, 101-110mm**
MAN TGA前轮轴套筒(101-110mm)

- Six side drive SW60.
- Special robust execution designed to remove the front axle nut.
- Made from special steel for high tightening and loosening torque.
- Size: 3/4" DR x 93mm / 6PT
- Overall length: 80mm
- Applicable: MAN TGA FRONT AXLE, V9-82L-01(disk brake /ABS), etc.



DN-F2059**IVECO Axle Nut Socket,98 mm
IVECO轮轴套筒98mm**

- Made from special steel and robust execution to remove the axle nut.
- Any extensive slipping is avoided.
- Size: Drive SW36 x 98mm /6PT
- Overall length: 117mm outer \varnothing 122mm
- Applicable: IVECO Euro Cargo, etc

**DN-F2060****Sleeve Locating Tube
螺母定位管**

ITEM NO.	INNER \varnothing	OUTER \varnothing	L
	mm	mm	mm
DN-F2062	46	52	140
DN-F2061	54	60	140
DN-F2060	60	67	140



- Practical connector system with fixing screw.
- Useful for different groove socket nuts(module systems).
- Enables stable work position.
- Prevents slippage of the socket.
- Change through loosening of the grub screw on the hexagon.

DN-F2063**Truck Injectors Solution
卡车喷油嘴拆卸器**

- Special Injector puller solution for new generation trucks
- Applicable: trucks with injector-Pump systems or with traditional truck injectors : VOLVO, SCANIA, MERCEDES, MAN, RENAULT, IVECO, etc...

**DN-F2064****HINO Oil Mist Separator Wrech,107mm
HINO柴油滤芯扳手**

- Designed to remove and install the oil mist filter on HINO truck.
- Use with 1/2" drive wrench.
- Applicable: HINO truck after 2003 .HM number: 103251,S23401-11840-A.

**DN-F2065****FUSO Oil Mist Separator Wrech,109mm
FUSO柴油滤芯扳手****FUSO oil mist separator wrench(8RIBS,109mm)**

- FUSO oil mist separator wrench(8RIBS, 109mm).
- Using the oil-water separator wrench.
- Looped handle.
- Japanese truck repair tool.
- Inner \varnothing 109mm, outer \varnothing 118mm, 176mm(H), 16mm(thickness).
- Suitable for FUSO 380 over 17 tons(engine no 6M70)and bus. MITSUBISHI all NEW CANTER eco-4 3.5, 6.7 and 6.9 tons.

**DN-F2066****Truck Valve Remover & Installer
日系卡车气门拆装工具**

- Dpecially designed to remove the install the valve of Japanese truck.
- Applicable: FUSO 3.5 tons, FUSO over 15 tons, Hino 750, ISUZU 180, 200.

**DN-F2067****CRANKSHAFT FRONT OIL SEAL INSTALLER (ISUZU 3.5 TONS)
前曲轴油封安装工具 3.5t**

- Special designed for installing the crankshaft front oil seal without damage.
- Oil seal genuine no.: BZ 4961E
- Applicable : ISUZU 3.5 tons

**DN-F2068****CRANKSHAFT REAR OIL SEAL INSTALLER (ISUZU 3.5 TONS)
后曲轴油封安装工具 3.5t**

- Special designed for preventing the oil seal from damage when installing it.
- Oil seal genuine no.: BZ4962-E, 3-97071561.
- Applicable: ISUZU 3.5 tons (4JB1, 4JG2) (130HP / 150HP).

**DN-F2069****ISUZU CRANKSHAFT OIL SEAL REPLACER SETISUZU
前后曲轴油封安装工具 (中型车)**

- Special designed for replacing crankshaft oil seal.
- No damage to oil seal and related parts.
- Applicable: ISUZU truck. Engine Model: 4 HF1, 4HG1, 6HH1, 6HK1.
- Oil Seal genuine no.: Front BZ4365E Rear BZ4219E.

**DN-F2070****Universal Extractor(For Trucks Only)
通用型日系卡车轮毂拆卸工具**

- Designed for all Japanese truck dismantling front and rear axles.
- Use with 46mm wrench.
- Size: \varnothing 259x32mm.
- Applicable: Japan truck HINO, UD,etc.

**DN-F2071****Injector Socket Set
4PCS 卡车喷油嘴套筒**

- A four piece toothed Injector Socket Set for use on Commercial Vehicles.
- Also suitable for some Iveco, Scania and Renault commercial vehicles.

**DN-F2072****HGV Cooling System Pressure Test Kit
大车水箱测试器**

- Special designed for testing the radiator on the truck.
- Test cooling system for leaks.
- Includes hand pump, test head in a blowmold case.
- Please ensure that the radiator coolant is not hot before operating.
- Applicable :DEUTZ ENGINE, MERC BENZ, VOLVO, MAN, RENAULT, DAF, IVECO, SCANIA.

**DN-F2074****UNIVERSAL BEARING CUP INSTALLER
大车调整型轴承安装器**

- Designed to install the wheel-bearing cups in a wide range of heavy-duty axles.
- A very easy and convenient tool to install various bearing cups.
- Capacity: 95-155mm.

**DN-F2073****Disel Injector Test
and Calibrating Hand Pump
柴油喷嘴测试器**

The diesel injector test and calibrating hand pump tank is provided with a filter.
Material: aluminum alloy .
Has a 3.5 inch dial gauge reading of 0 to 600 bar, also with reading 0 - 8700 lbs/ in³.
Supplied with M14 x M14 and M14 x M12 pipes.

DN-F2075**TRUCK ABS SENSOR RING FITTING TOOL
FOR VOLVO (FM)
VOLVO ABS齿环安装工具**

The Volvo truck ABS sensor ring fitting tool is specially designed to install the ABS sensor without damaging the air break system.
Application: Volvo truck.
Sensor ring number: 9998558-3.

**DN-F2076****CRANKSHAFT REAR OIL SEAL INSTALLER
-for SCANIA
SCANIA曲轴后油封安装工具**

Designed to install new oil seal onto crankshaft more easier and safty.
Put the tool above the oil seal and hit it to force oil seal install in the right place.
Applicable: SCANIA 310/ 320
Oil seal no.:0366303-R

**DN-F2077****PART OF TRANSMISSION BEARING PULLER
FOR SCANIA
SCANIA变速箱轴承拆卸配件**

Use the part for removing the transmission bearing on SCANIA.
Part number: #310
Applicable: SCANIA truck transmission bearing puller

**DN-F2078****HUB AXLE BEARING INSTALLER AND REMOVER SET
-for VOLVO FM12
VOLVO轮毂轴承拆装工具**

Specially designed to install and remove front hub axle bearing, lifting axle bearing and driving axle bearing. It needs to use with hydraulic press.
Applicable: VOLVO FM12/FM.
Bearing size:
Front axle bearing: \varnothing 68x \varnothing 125mm.
Lifting axle bearing: \varnothing 58x \varnothing 110mm.
Driving axle bearing: \varnothing 94x \varnothing 148mm.

**DN-F2079****CRANKSHAFT FRONT OIL SEAL INSTALLER
-for SCANIA P, R
SCANIA曲轴前油封安装工具**

Special designed to install the crankshaft front oil seal without damage the oil seal and related parts.
Applicable: SCANIA P.R series truck after 2010.
Seal number.: 1754911

**DN-F2080****CRANKSHAFT FRONT OIL SEAL INSTALLER
FOR SCANIA
SCANIA曲轴前油封安装工具**

Specially designed for installing the crankshaft front oil seal without damage.
Applicable: SCANIA (114) 340/360/380 truck.
Original number: 1392708.

**DN-F2081****DIFFERENTIAL SPINDLE BEARING INSTALLER
FOR VOLVO (FM/FH)
VOLVO差速器主轴承安装工具**

The Volvo differential spindle bearing installer is specially designed to install the bearing on the differential spindle easily by hydraulic press.
Application: Volvo FH / FM.
Bearing number: 9996759.



DN-F2082
REAR SPRING WASHER SOCKET
FOR VOLVO
VOLVO驾驶室后避震器套筒工具

The Volvo rear spring washer socket is specially designed to remove and install the leaf spring bolts on the rear wheel shock absorber spring.
Size: 3/4" Dr. x 28.5 x 44 mm.
Overall length: 60 mm.
Application: Volvo rear axle e.g. FH.



DN-F2083
TIMING GEAR COVER INSTALLER
FOR VOLVO TRUCK
VOLVO正时盖安装工具

The Volvo truck timing gear cover installer is specially designed to fix gear covers. Oil may leak without using this tool.
OEM number: 9998389, 9998601.
Application: Volvo trucks.



DN-F2084
HYDRAULIC LIFT CYLINDER SET
FOR VOLVO Fm12
VOLVO举升液压拆装器

The Volvo FM12 hydraulic lift cylinder set is specially designed for removing and installing the oil seal of the hydraulic lift cylinder.
Material: SCM 440.
Application: Volvo FM12 truck after 2005.



DN-F2085
CRANKSHAFT FRONT OIL SEAL INSTALLER
FOR VOLVO FM
VOLVO曲轴前油封安装工具

The Volvo FM crankshaft front oil seal installer is specially designed to install the crankshaft front oil seal quickly and easily without getting damage on the seal.
Application: Volvo FM truck (D16F).
Seal number: 88800021, 9992000.



DN-F2086
KING PIN REMOVER(10 WHEELS)
FOR SCANIA
SCANIA 转向节销拆装工具

Specially designed for removing the king pin on SCANIA.
Have to use with air impact wrench.
Applicable: SCAN IA 320/340/360 (10 wheels truck)



DN-F2087
INJECTOR WATER JACKET REMOVER/INSTALLER
FOR SCANIA 113, 114
SCANIA 喷油器铜套拆装工具

Special designed to remove and install injector bush on the car directly.
Applicable: SCANIA 113 114 engine.



DN-F2088
UNIVERSAL TRUCK BALL JOINT SEPARATOR
通用型球头拆装工具

Special designed 3 interchangeable jaws to remove ball joint, and tie rod on truck.
Jaws open: 25mm, 32mm, 48mm.
Applicable: DAF, Iveco, MAN, Mercedes, Scania, Volvo, etc.



DN-F2089
INJECTOR SLEEVE REMOVER/INSTALLER
FOR VOLVO FM12
VOLVO喷油器铜套拆装工具

The Volvo FM12 injector sleeve remover/installer is specially designed for removing and installing the injector sleeve.
Application: Volvo FM12 trucks.
VM number: 85104134.



DN-F2090
INJECTOR SLEEVE REMOVER/INSTALLER
FOR VOLVO FM12 (CCI)
VOLVO喷油器铜套拆装工具

The Volvo FM12 injector sleeve remover/installer is specially designed for removing and installing the injector sleeve.
Application: Volvo FM12 (electronic fuel injection system).
VM number: 9986174, 88800387, 88880054.



DN-F2091
CRANKSHAFT REAR OIL SEAL INSTALLER
FOR VOLVO FM12
VOLVO曲轴后油封安装工具

- Specially designed to install the crankshaft oil seal without damage to the oil seal and related parts.
- Applicable : VOLVO FM12 (420.430.440).
- Seal no. : 1543896.
- VM Number : 9990166, 8880013.



DN-F2092
UD DIESEL FUEL FILTER WRENCH
FOR VOLVO
VOLVO柴油滤芯扳手

The UD, Volvo diesel fuel filter wrench specially designed for removing the oil filter.
Operated with 1/2" Dr. wrench.
Application: UD and Volvo full-size trucks.
Engine type: UD GH11, Gh13.



DN-F2093
TRUCK FAN BEARING BASE SOCKET
FOR VOLVO
VOLVO卡车风扇轴承套筒53.8mm

The Volvo truck fan bearing base socket has a special 4-internal studs design to install and remove the fan bearing base.
Size: 3/4" Dr. x 53.8 mm / 4 PT.
Overall length: 46 mm.
Application: Volvo trucks.



DN-F2094
CRANKSHAFT REAR OIL SEAL INSTALLER
FOR VOLVO Fm12
VOLVO曲轴后油封安装工具

The Volvo FM12 crankshaft rear oil seal installer can prevent the rear oil seal from being damaged during installation.
Application: Volvo truck FM12 (380), (420), (430), year 2000 - 2007.
Oil gear genuine number: 85108352.



DN-F2095
HUB AXLE SEAL INSTALLER
FOR VOLVO Fm12
volvo 轮毂油封安装工具

Specially designed to install front and rear hub axle oil seal.
It can use directly or use with hydraulic press.
Applicable: Volvo FM12/FM.
New type front oil seal no.: F-566426, H195.
New type rear oil seal no.: F-566425, H195/F-800792.28.
Old type front inner oil seal no.: 3985463.
Old type front outside oil seal size: $\varphi 98 \times \varphi 125 \times 8L$.
Old type rear inner oil seal no.: 800792A, 800792C.
Old type rear outside oil seal size: $\varphi 125 \times \varphi 148 \times 9.7L$.



DN-F2096
SERPENTINE BELT ADJUSTING TOOL
FOR VOLVO Fm12
volvo 蛇形皮带的调整工具

Specially designed to use on remove and install fan belt when release serpentine.
Applicable: VOLVO FM12 380/420/430.



DN-F2097
OIL COOLER INSTALLER
FOR VOLVO FM 440
volvo机油冷却器安装工具

Specially designed to install and fix oil cooler.
Applicable: VOLVO FM440 (D13).
VM number: 8880022-1.



DN-F2098
HGV SPRING BASE NUT EXTRACTOR/INSTALLER
for VOLVO
volvo重型货车弹簧底座螺母取出器

For the removal and installation of HGV cab shock absorbers.
For counter holding the piston rod and simultaneous turning of the screw cap.
Applicable: VOLVO HGV cab shock absorbers



DN-F2099
TRUCK BRAKE SHOE LINING CALIPER TOOL
FOR VOLVO
volvo卡车刹车片衬垫钳工具

For the restoration of the drum brake.
For opening and fixing the brake shoes retaining spring, and dismantling and assembly of the jaw pins.
With drive spindle for continuous opening.
Applicable: VOLVO N7, 10, 12; F7, 12, 16; FH12, 16; FL7, 10, E and EC series.



DN-F2100
HYDRAULIC TRUCK SPLIT PIN REMOVER & INSTALLER
液压卡车分体式销轴拆卸和安装工具

To remove and install split pin by way of hydraulic pressure.
Applicable: Truck of European model (SCANIA, VOLVO ... etc)
Truck or middle lorry of Japanese model (ISUZU, FUSO, TOYOTA ... etc)
The cylinder capacity will reach 17T when the pump with 10000psi (700lbs) power.



DN-F2101
TRANSMISSION SOCKET
FOR SCANIA
SCANIA 传动套筒

Special 4 dots design for suiting nuts.
• SIZE: 3/4" DR. x 64mm/4PT.
• Application: SCANIA 310(112) / 320(113) / 340(114), Rear spindle (8/10 speed).



DN-F2102**TRANSMISSION CLUTCH FRONT MAIN AXLE
NUT SOCKET FOR SCANIA
SCANIA变速器离合器前主轴螺套**

To apply for SCANIA transmission clutch main shaft nut.
Size: 3/4" Dr. 64mm / 4PT
Applicable:
SCANIA truck with 10-speed auto-transmission.

**DN-F2103****TRANSMISSION CLUTCH FRONT MAIN AXLE
NUT SOCKET FOR SCANIA
SCANIA变速器离合器前主轴螺套**

To apply for SCANIA 8 speed transmission nut.
Size: 3/4"Dr. x 58mm / 4PT
Applicable: SCANIA bus.

**DN-F2104****TRANSMISSION CLUTCH FRONT MAIN
SHAFT SOCKET FOR SCANIA
SCANIA变速箱离合器前主轴螺帽套筒**

To apply for SCANIA transmission clutch main shaft nut.
Size: 3/4"Dr. 72mm.
Applicable: Scania.

**DN-F2105****CRANKSHAFT REAR OIL SEAL INSTALLER
FOR SCANIA P, R M10*25L
SCANIA曲轴后油封安装工具**

Special designed to install the crankshaft rear oil seal without damage the oil seal and related parts.
Applicable: SCANIA(114)340/360/380, P.R series truck.
Seal no.: 1433183.
Seal size: $\psi 140 \times \psi 160 \times 12L$

**DN-F2106****TRUCK VALVE SPRING COMPRESSOR
FOR SCANIA
SCANIA卡车气门弹簧压缩器**

Specially designed tool for removal and install valve spring on car.
Fixing screw specifications: M10 x 25L.
Applicable: SCANIA 340/ 360/ 380 truck.

**DN-F2107****PISTON RING INSTALLER
FOR SCANIA 112, 113, 114
SCANIA卡车活塞安装工具**

Specially designed to install cylinder piston ring.
Cylinder size: $\phi 127mm$.
Applicable:
SCANIA 112, 113, 114, P340, P360, P380, P400 engine.
Engine code:DS11.34, DS11.73, DSC11.12, DSC11.13, DSC11.16, DSC11.17, DSC11.18, DS11.41,DS11.78,DSC11.24,DSC11.27.



Note:

Lined area for writing on page 39.

Lined area for writing on page 40.