



TEST REPORT: GSM90A15-P1M

90W AC-DC High Reliability Medical Adaptor

■ DESIGN VERIFY TEST

Output Function Test
Input Function Test
Protection Function Test
Component Stress Test

■ SAFETY & E.M.C. TEST

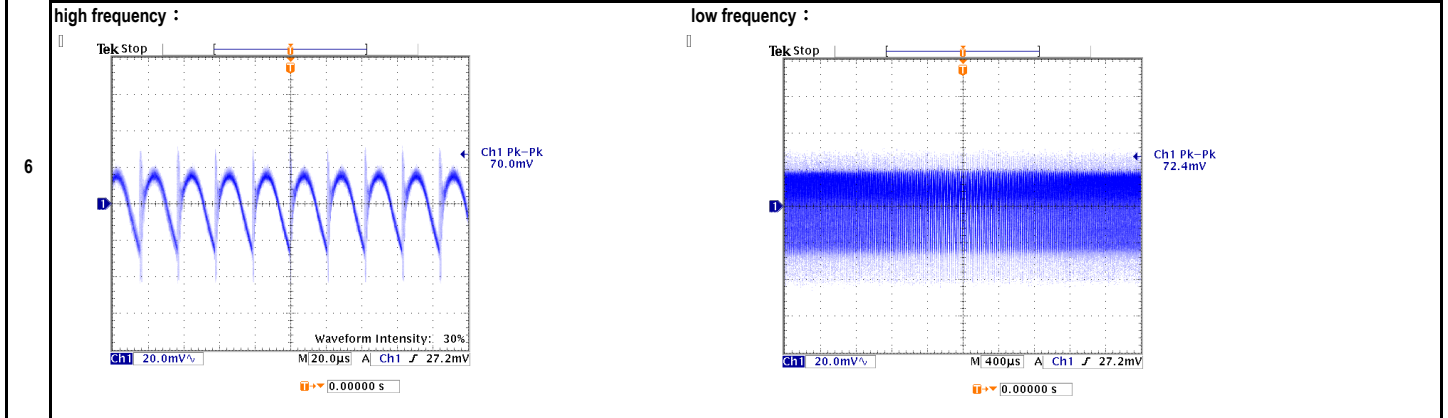
Safety Test
E.M.C. Test

■ RELIABILITY TEST

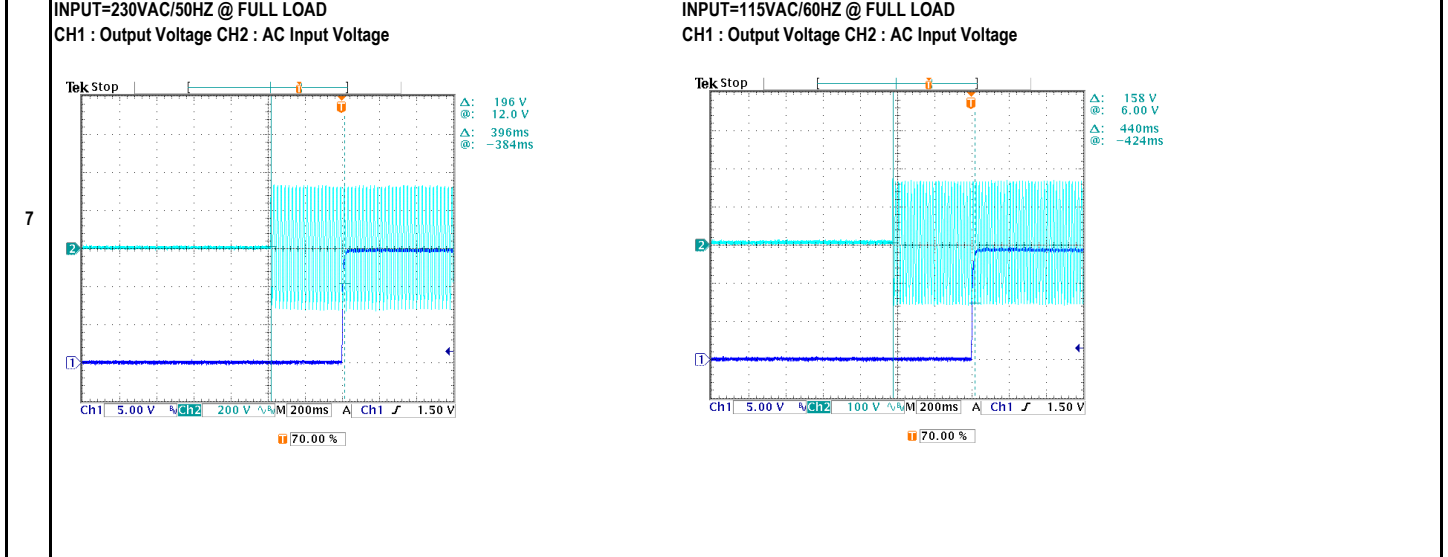
ENVIRONMENT TEST

DESIGN VERIFY TEST
OUTPUT FUNCTION

NO	TEST ITEM	SPECIFICATION	TEST CONDITION	RESULT
1	OUTPUT VOLTAGE RANGE	CH1: 14.25V ~ 15.75V	I/P : 230VAC O/P: MIN LOAD TA: 25°C	CH1: 15.25V
2	OUTPUT VOLTAGE TOLERANCE (Max)	V1 : 5.0% ~ -5.0%	I/P : 100VAC / 264VAC O/P: FULL / MINLOAD TA= 25°C	V1: 1.73% ~ -2.47%
3	LINE REGULATION (MAX.)	V1 : 1.0% ~ -1.0%	I/P : 100VAC / 264VAC O/P: FULL LOAD TA : 25°C	V1: 0.75% ~ 0.00%
4	LOAD REGULATION (MAX.)	V1 : 5.0% ~ -5.0%	I/P : 230VAC O/P: MIN LOAD ~ FULL LOAD TA : 25°C	V1: 3.39% ~ -0.88%
5	OVER/UNDERSHOOT TEST	< ±5%	I/P : 230VAC O/P: FULL LOAD TA : 25°C	TEST< 2.0 %
	RIPPLE & NOISE(Max)	V1 : 120 mVp-p	I/P : 230VAC O/P: FULL LOAD TA : 25°C	V1 : 72.4 mVp-p



SET UP TIME (MAX.)	230VAC : 1000ms	I/P : 230VAC	230VAC : 396ms
	115VAC : 1000ms	I/P : 115VAC O/P: FULL LOAD TA : 25°C	115VAC : 440ms



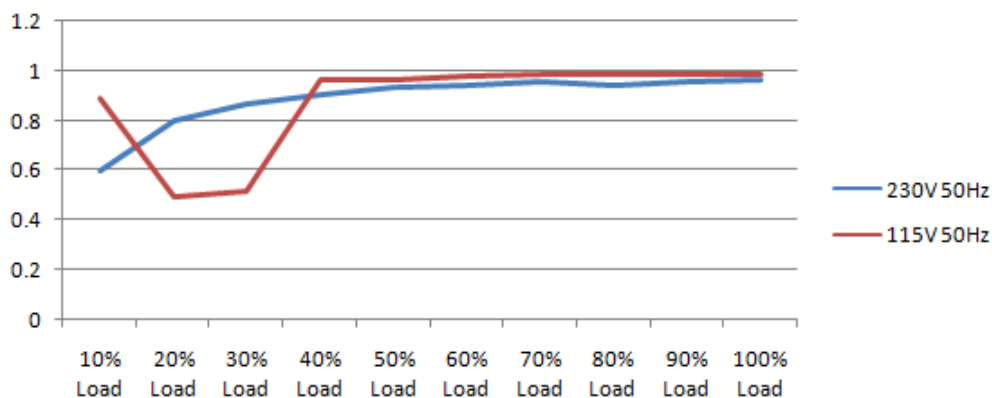


8	RISE TIME (MAX.)	230VAC : 50ms 115VAC : 50ms	I/P : 230VAC I/P : 115VAC O/P: FULL LOAD TA : 25°C	230VAC : 7.8ms 115VAC : 7.4ms
	INPUT=230VAC/50HZ @ FULL LOAD CH1 : Output Voltage		INPUT=115VAC/60HZ @ FULL LOAD CH1 : Output Voltage	
9	HOLD UP TIME (TYP.)	230VAC : 20ms 115VAC : 20ms	I/P : 230VAC I/P : 115VAC O/P: FULL LOAD TA : 25°C	230VAC : 32.8ms 115VAC : 23.2ms
	INPUT=230VAC/50HZ @ FULL LOAD CH1 : Output Voltage CH2 : AC Input Voltage		INPUT=115VAC/60HZ @ FULL LOAD CH1 : Output Voltage CH2 : AC Input Voltage	
10	DYNAMIC LOAD	V1 : 1500 mVp-p	I/P : 230VAC O/P: (1) Full/Min load 50% duty/120HZ (2) Full/Min load 50% duty/1KHZ TA : 25°C	V1: (1) 884mv (2) 840mv unit:mVp-p
	FULL /Min LOAD 50%DUTY / 120HZ		FULL /Min LOAD 50%DUTY / 1KHZ	

INPUT FUNCTION TEST

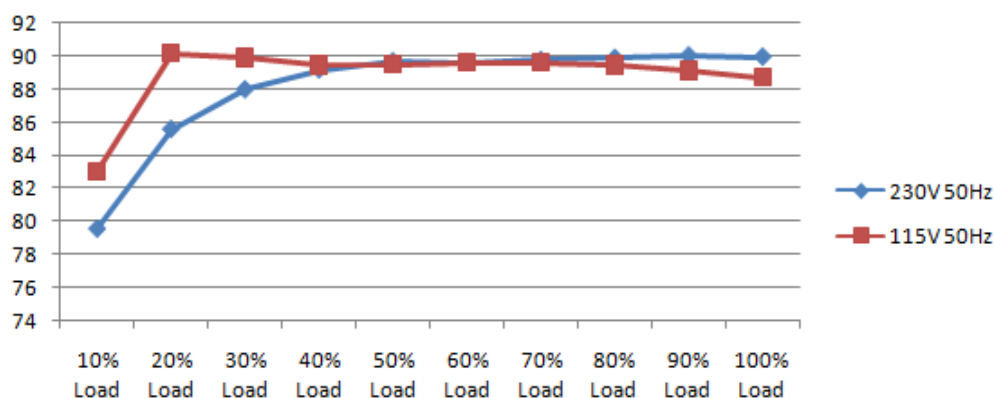
NO	TEST ITEM	SPECIFICATION	TEST CONDITION	RESULT
1	INPUT VOLTAGE RANGE	80VAC ~ 264VAC	I/P : TESTING O/P : FULL LOAD Ta : 25°C	55.0VAC ~ 264VAC
			I/P : LOW-LINE = 97VAC HIGH-LINE = 300VAC O/P : FULL/MIN LOAD ON:30 Sec ; OFF:30 Sec 10MIN (POWER ON/OFF NO DAMAGE)	TEST : OK
2	INPUT FREQUENCY RANGE	47HZ ~ 63HZ NO DAMAGE	I/P : 100VAC ~ 264VAC O/P : FULL-MIN LOAD Ta : 25°C	TEST : OK
3	INPUT CURRENT (TYP.)	0.6 / 230VAC 1.3 / 115VAC	I/P : 230VAC I/P : 115VAC O/P : FULL LOAD TA : 25°C	I= 0.4463 / 230VAC I= 0.8768 / 115VAC
4	LEAKAGE CURRENT	< 0.10mA for earth leakage current	I/P : 264VAC O/P : MIN LOAD TA : 25°C	L-FG: 0.068 mA N-FG: 0.068 mA
		< 0.10mA for touch leakage current	I/P : 264VAC O/P : MIN LOAD TA : 25°C	L-V: 0.091 mA N-V: 0.09 mA
5	NO LOAD POWER CONSUMPTION	< 0.15W	I/P : 230VAC O/P : MIN LOAD TA : 25°C	< 0.1086 W
	POWER FACTOR (TYP.)	0.91 / 230VAC 0.95 / 115VAC	I/P : 230VAC I/P : 115VAC O/P : FULL LOAD TA : 25°C	PF= 0.9597 / 230VAC PF= 0.9895 / 115VAC

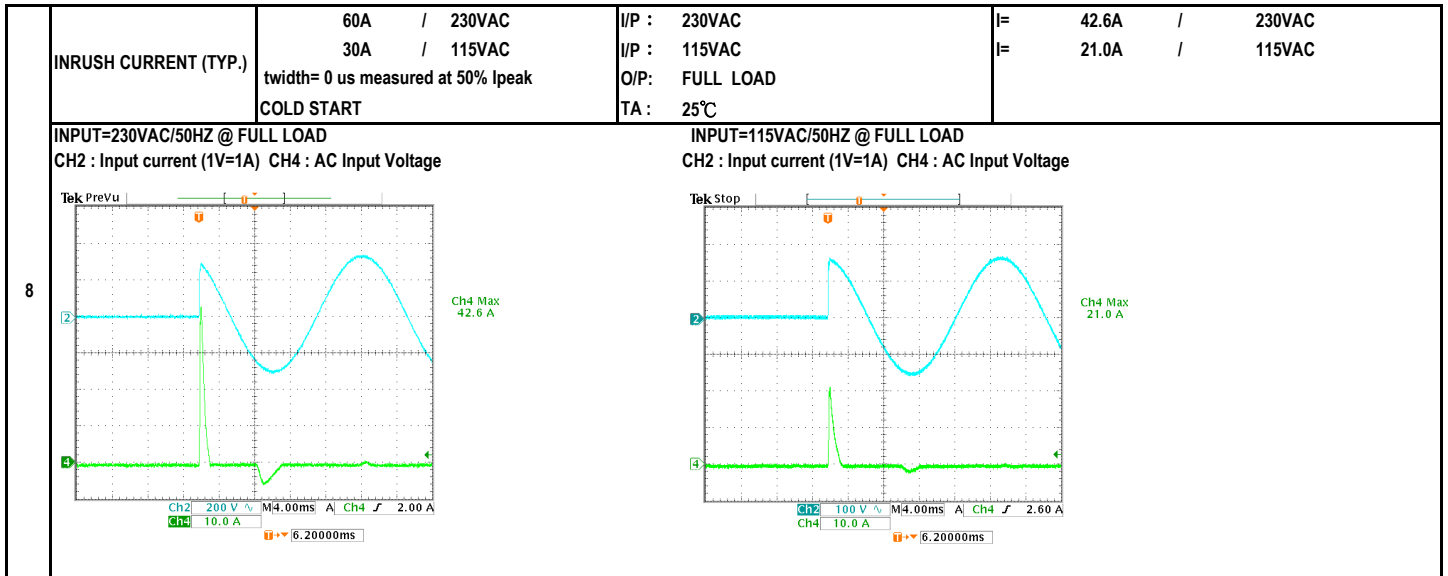
6



7

EFFICIENCY (TYP.)	89.0%	I/P : 230VAC O/P : FULL LOAD TA : 25°C	89.848 %
-------------------	-------	--	----------





PROTECTION FUNCTION TEST

NO	TEST ITEM	SPECIFICATION	TEST CONDITION	RESULT
1	OVER LOAD PROTECTION	110% ~ 150%	I/P: 264VAC I/P: 230VAC I/P: 100VAC O/P: TESTING TA : 25°C	133.50% 264VAC 133.50% 230VAC 126.80% 100VAC Hiccup Mode
2	OVER VOLTAGE PROTECTION	15.75V ~ 20.25V	I/P: 264VAC I/P: 230VAC I/P: 80VAC O/P: MIN LOAD TA : 25°C	17.40V 264VAC 17.40V 230VAC 17.40V 80VAC Shut down Re- power ON
3	OVER TEMPERATURE PROTECTION	Shut down Re- power ON	I/P: 264VAC I/P: 80VAC O/P: FULL LOAD	O.T.P. Active Shut down Re- power ON
4	SHORT PROTECTION	SHORT EVERY OUTPUT 1 HOUR NO DAMAGE	I/P: 264VAC I/P: 80VAC O/P: FULL LOAD Ta: 25°C	NO DAMAGE Hiccup Mode

COMPONENT STRESS TEST

NO	TEST ITEM	SPECIFICATION	TEST CONDITION	RESULT
1	PWM Power Transistor	Q32 Rated : 700V 11.0A	I/P : 267VAC VDS : O/P : (1)Full Load Turn on (2) Output Short (3)Full load continue Ta : 25°C	VIN: 267VAC VDS: (1). 642.00V (2). 538.00V (3). 610.00V
2	O/P Diode (MOSFET)	Q101 Rated : 100V 62.0A Q102 Rated : 100V 62.0A	I/P : 267VAC VDS : O/P : (1)Full Load Turn on (2) Output Short (3)Full load continue Ta : 25°C	Q101 Q102 VDS : VDS : (1). 87.60V 87.60V (2). 67.60V 67.20V (3). 85.20V 86.80V
3	Input Capacitor	C5 Rated : 100uf 400V	I/P : 267VAC O/P : (1)Full Load Turn on /Off (2)Min load Turn on /Off (3)Full Load /Min load Change Ta : 25°C	(1). 402.00V (2). 395.00V (3). 400.00V



4	Control IC	U2 Rated : 28V (max) -0.3V (min)	I/P : 267VAC O/P : (1)Full Load (2)Output Short (3)O.L.P (4)O.V.P (5)Low Line No Load Vo(min) Ta : 25°C	U2 U101 (1). 18.60V 16.80V (2). 15.20V 1.86V (3). 17.50V 113.00V (4). 19.90V 18.00V (5). 17.40V 15.60V
5	PFC Power Transistor	Q31 Rated : 600V 15.8A	I/P : 267VAC VDS : O/P : (1)Full Load Turn on (2) Output Short (3)Full load continue Ta : 25°C	VIN: 267VAC VDS: (1). 436.00V (2). 420.00V (3). 434.00V
6	PFC Diode	D1 Rated : 600V 4.0A	I/P : 267VAC O/P : (1)Full Load Turn on (2) Output Short (3)Dynamic Load Full/Min Load 90%Duty/5KHz (4)Dynamic Load Full/Min Load 50%Duty/120Hz Ta : 25°C	267VAC (1). 446.00V (2). 442.00V (3). 450.00V (4). 444.00V
8	Clamp Diode	D30 Rated : 800V 2.0A	I/P : 267VAC O/P : (1)Dynamic Load Full/Min Load 90%Duty/1KHz (2)Full load continue Ta : 25°C	(1). 590.00V (2). 570.00V

SAFETY & E.M.C. TEST

SAFETY TEST

NO	TEST ITEM	SPECIFICATION	TEST CONDITION	RESULT
1	WITHSTAND VOLTAGE	I/P-O/P : 4.000KVAC /min 2.000KVAC /min	I/P-O/P: 4.400KVAC /min I/P-FG: 2.400KVAC /min Ta : 25°C	I/P-O/P: 1.70mA I/P-FG: 2.29mA NO DAMAGE
2	ISOLATION RESISTANCE	I/P-O/P : 500VDC>100MΩ	I/P-O/P: 500VDC Ta : 25°C/70%RH	I/P-O/P: 9999MΩ NO DAMAGE

E.M.C. TEST

NO	TEST ITEM	SPECIFICATION	TEST CONDITION	RESULT
1	HARMONIC	EN61000-3-2 CLASS A	I/P : 230VAC /50HZ O/P : FULL LOAD Ta : 25°C	PASS
2	CONDUCTION	EN55011 CLASS B	I/P : 230VAC /50HZ O/P : FULL LOAD / 50% LOAD Ta : 25°C	PASS Test by certified Lab
3	RADIATION	EN55011 CLASS B	I/P : 230VAC /50HZ O/P : FULL LOAD Ta : 25°C	PASS Test by certified Lab
4	E.S.D	EN61000-4-2 MEDICAL AIR: 8KV / Contact: 6KV	I/P : 230VAC /50HZ O/P : FULL LOAD Ta : 25°C	CRITERIA A
5	E.F.T	EN61000-4-4 MEDICAL INPUT: 2KV	I/P : 230VAC /50HZ O/P : FULL LOAD Ta : 25°C	CRITERIA A
6	SURGE	IEC61000-4-5 MEDICAL L-N:1KV;L/N-PE: 2KV	I/P : 230VAC /50HZ O/P : FULL LOAD Ta : 25°C	CRITERIA A



RELIABILITY TEST

NO	TEST ITEM	SPECIFICATION	TEST CONDITION	RESULT
1	TEMPERATURE RISE TEST	MODEL : GSM90A12-P1M		
		1. ROOM AMBIENT BURN-IN : 1.0hrs IP: 230VAC O/P: 100% LOAD TA= 20.3°C		
		2. HIGH AMBIENT BURN-IN : 1.0hrs IP: 230VAC O/P: 100% LOAD TA= 39.8°C		
			NO. Position ROOM AMBIENT 20.3°C HIGH AMBIENT Ta: 39.8°C	
			1 LF1 55.9°C 71.1°C	
			2 LF2 54.8°C 70.6°C	
			3 BD1 60.2°C 75.8°C	
			4 C5 62.7°C 77.9°C	
			5 L2 59.5°C 74.5°C	
			6 LF3 63.2°C 78.3°C	
			7 Q31 65.2°C 80.8°C	
			8 Q32 66.1°C 81.8°C	
			9 T1 COIL 76.1°C 90.7°C	
			10 Q101 62.8°C 78.9°C	
	11 Q102 60.5°C 76.9°C			
	12 U2 65.0°C 80.7°C			
	13 C101 59.5°C 75.7°C			
2	OVER LOAD BURN-IN TEST	NO DAMAGE 1 HOUR (MIN)	I/P : 230VAC O/P : 129.53% LOAD Ta : 25°C	TEST : OK
3	LOW TEMPERATURE TURN ON TEST	NO DAMAGE 1 HOUR (MIN)	I/P : 264VAC / 100VAC O/P : FULL LOAD Ta : -30.0°C	TEST : OK
4	HIGH HUMIDITY HIGH TEMPERATURE HIGH VOLTAGE TEST	AFTER 12 HOURS IN CHAMBER ON CONTROL 40°C NO DAMAGE	I/P : 272VAC O/P : FULL LOAD Ta : 40°C HUMIDITY= 95.0% RH	TEST : OK
5	TEMPERATURE COEFFICIENT	±0.03% /(0°C~40°C)	I/P : 230VAC O/P : FULL LOAD	±0.0086% /(0°C~40°C)
6	STORAGE TEMPERATURE TEST	1. Thermal shock Temperature : -40°C ~ +85°C 2. Temperature change rate : 25°C / MIN 3. Dwell time low and high temperature : 30 MIN/EACH 4. Total test cycle : 5 CYCLE 5. Input/Output condition : STATIC		TEST : OK
7	THERMAL SHOCK TEST	1. Thermal shock Temperature : -35°C ~ +45°C 2. Temperature change rate : 25°C / MIN 3. Dwell time low and high temperature : 30 MIN/EACH 4. Total test cycle : 10 CYCLE 5. Input/Output condition : 230VAC Full Load AC ON/OFF test turn on 58sec ; turn off 2sec		TEST : OK
8	VIBRATION TEST	1 Carton & 1 Set (1) Waveform : Sine Wave (2) Frequency : 10~500Hz (4) Acceleration : 2G (5) Test Time : 60 min in each axis (X.Y.Z) (6) Ta : 25°C		TEST : OK
9	CAPACITOR LIFE CYCLE	:SUPPOSE C101 IS THE MOST CRITICAL COMPONENT (1) I/P : 230VAC O/P : FULL LOAD Ta= 25.0°C LIFE TIME (2) I/P : 230VAC O/P : FULL LOAD Ta= 40.0°C LIFE TIME (3) I/P : 230VAC O/P : 75% LOAD Ta= 40.0°C LIFE TIME (4) I/P : 230VAC O/P : 50% LOAD Ta= 40.0°C LIFE TIME		(1). 138154.7 HRS (2). 61438.4 HRS (3). 133455.3 HRS (4). 289409.6 HRS
10	MTBF	MIL-HDBK-217F TOTAL FAILURE RATE : 405.6 KHRS		
11	DMTBF /Accelerated Life test	Demonstration Mean Time Between Failure (Expected Life): Above 30000HRS @ TA 40°C		

TEST RESULT	TESTER	REVIEW	APPROVAL
PASS	FRANK	GESG	WANGDZ