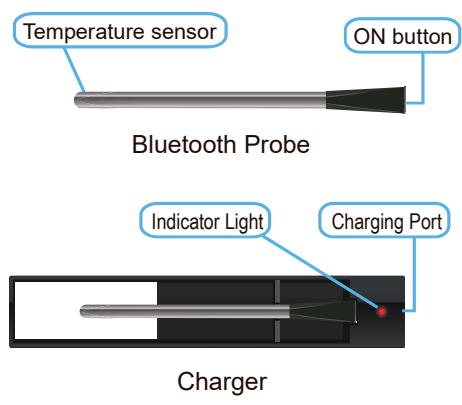


Thank you for using the Temperature Data Recording Probe. It measures and records temperature under severe environment with stainless-steel tube structure, shock proof, durable, and bluetooth communication. You only need to download the APP TempView, which can monitor and query the temperature record data by mobile phone. It is suitable for cold chain transportation, laboratory, household, industry agriculture.

1 Appearance



2 Features

- Measuring and recording temperature
- Operating mode: bluetooth and recording
- BLE4.0 with transmission distance of 10 meters
- Smartphone download the data memoried in the probe
- Fast charge 5 minutes and operating for 4 hours (in bluetooth) or 10 hours(in recording)
- Measurement range:-40 ~ 85 C
- Accuracy: ±1 C (5 ~ 60 C)
- Record interval: 5 minutes
- Memory capacity: 12000B

3 Using the probe

1) Download APP



Scan the QR Code or download the TempView App available on App Store (for IOS) or Google Play Store (for Android)

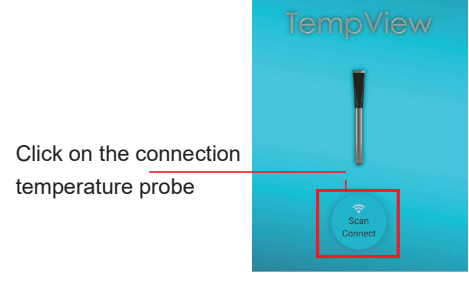


2) Charges probe

- Keep the probe in the charger before use or the battery is low.
- The external power supply is connected to the USB.Red Light on indicates charging in progress. Each charging requires about 5 minutes.

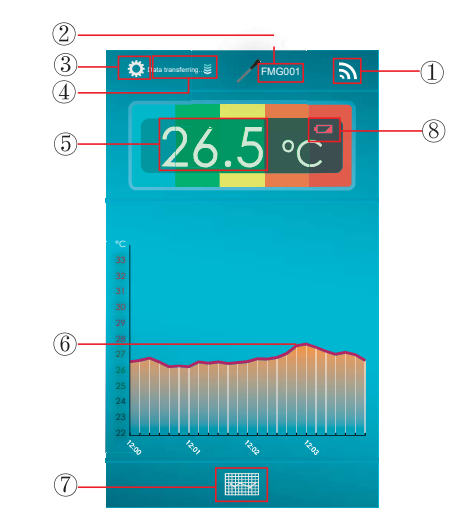
4 APP operation

1) Bluetooth connection



Click on the connection temperature probe

2) APP Interface



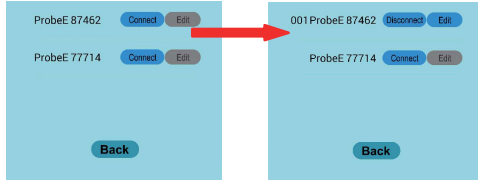
- ①、Bluetooth connection status, click on the bluetooth connection.
- ②、Device name
- ③、System setting interface
- ④、Data download tips
- ⑤、Current temperature
- ⑥、Temperature data curve
- ⑦、Historical query
- ⑧、Low battery alarm, need to recharge the probe

Note: After each successful Bluetooth connection, the probe memory data will be uploaded to the mobile phone, upload process, do not operate APP. The more data is recorded, the longer the upload time

3) Connect the bluetooth

Download & Open the App TempView. Press the "ON" button at the top of the probe followed by clicking "X" in the top right corner of the screen. Then, select the probe from the list. Bluetooth is connected when the screen shows "📶".

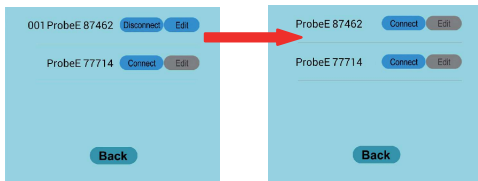
User Manual



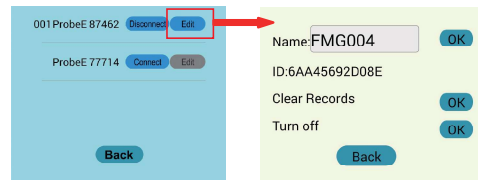
Note: Press ON to start 5-minute bluetooth broadcasting. If the connection is not successful, the probe will turn off bluetooth automatically and enter the temperature recording mode.

4) Disconnect the bluetooth

Click "📶" in the top right corner of the screen. Then, Select the connected probe and click "Y" to disconnect Bluetooth connection.



5) Set device information

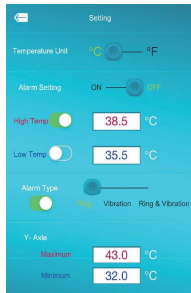


Click "Edit" to open the probe setup interface

- Click icon to modify device name.
- Click icon to clear the temperature records stored inside the probe.
- Switch off the probe.

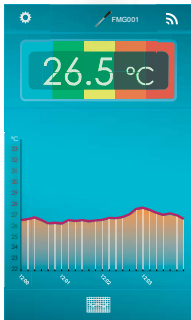
Note: the probe can not be automatically turned off, and can only be ordered from the phone APP to shut down the probe.

6) System Settings



- Unit: Celsius / Fahrenheit
- Alarm on / off
- High temperature threshold
- Low temperature threshold
- Alarm Type: Ring, Vibration, Ring & Vibration
- Ordinate setting

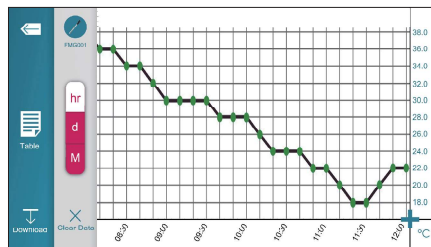
7) Real-time temperature monitoring



Once the Bluetooth connection is successful, update the temperature data and temperature curve every 10 seconds.

8) Historical query

Click "📊" to enter the history query interface.



Click "hour, day, month": check the corresponding interface

ID	Date Time	Temperature value
010101	2017-11-14 18: 05	36.5°C
010101	2017-11-14 18: 10	36.6°C
010101	2017-11-14 18: 15	36.8°C
010101	2017-11-14 18: 20	36.7°C
010101	2017-11-14 18: 25	36.9°C
010101	2017-11-14 18: 30	36.4°C
010101	2017-11-14 18: 35	36.5°C
010101	2017-11-14 18: 40	36.5°C
010101	2017-11-14 18: 45	36.5°C
010101	2017-11-14 18: 50	36.5°C
010101	2017-11-14 18: 55	36.5°C

Download: You can email the recording data file.
Clear Data: The current temperature record probe can be cleared to store data on the phone.

5 Alarm

1) High and low temperature alarm

When the temperature is above or below the preset temperature, the alarm is prompted.

2) Bluetooth disconnection alarm

When the Bluetooth connection between the smartphone and the probe is interrupted, an alarm message will pop up to remind you.

6 Attention

- For 5 minutes, there is no Bluetooth connection. The probe automatically closes. You need to press the ON key to reconnect.
- The probe should not be placed in the environment above 85 °C .
- After the top of probe handle is put on the sealing cap, it can be cleaned under water.

