

Shuttering Magnet



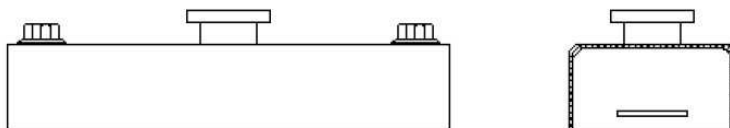
With this Magnet, wooden or steel formworks can be safely fixed to Steel moulds or Tables. The product is delivered with integrated high-performance magnets with forces from 450 to 2100 kg. Integrated threads (M16) can be used to adapt special formwork constructions to the Boxes. When the magnets are activated, steel springs are pulling the formwork against the basic steel plate

Advantages / Overview:

- High Forces from 450 to 2100 kg
- Integrated automatic mechanism with steel springs
- Integrated threads M16 to adapt formwork
- Same magnet can be used for different purposes
- Adapters for your demand can be delivered on request

Specifications:

2100kgs & 1800kgs



L= 320mm

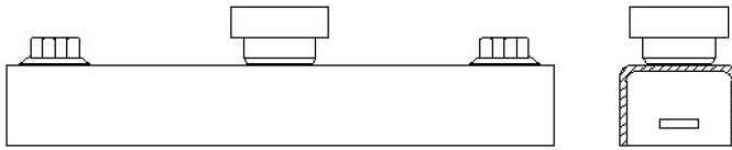
B= 120mm

H1= 60mm (Box)

H2= 84mm (Magnet Activated)

H3= 94mm (Magnet Deactivated)

900kgs



L= 280mm

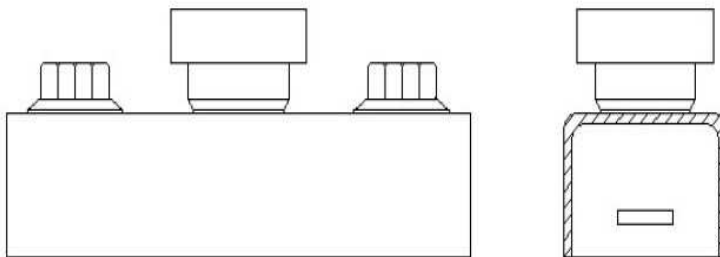
B= 60mm

H1= 40mm (Box)

H2= 69mm (Magnet Activated)

H3= 79mm (Magnet Deactivated)

450kgs



L = 170mm

B = 60mm

H1= 40mm (Box)

H2= 69mm (Magnet Activated)

H3= 79mm (Magnet Deactivated)