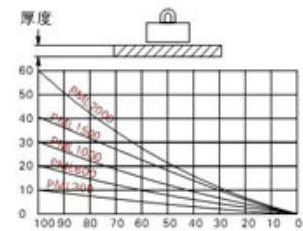
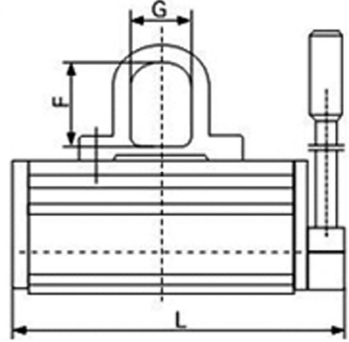
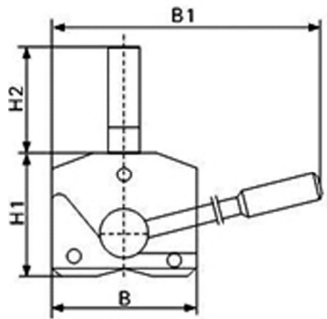
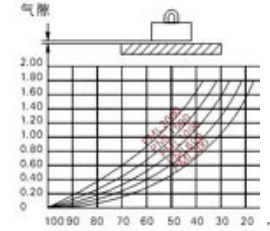


Permanent Magnetic Lifters



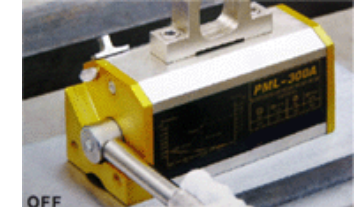
吸力
Holding power (%)
载荷厚度和吸力
Thickness of load and holding power



吸力
Holding power (%)
气隙和吸力
Air gap and holding power



Lever in the "ON" position.



Lever in the "OFF" position.

Note the pin safety lock is engaged.

Code	Dimensions(mm)								Weight(kg)
	L	L1	B	H1	H2	B1	F	G	
PML-300A	203	165	87	89	68	223	45	38	10
PML-600A	266	226	112	109	86	287	58	45	21
PML-1000A	330	290	148	125	95	364	60	52	40
PML-1500A	385	330	178	145	118	447	70	65	65
PML-2000A	470	420	178	145	118	487	70	65	83

Shape Code	Steel plate(钢板)			Circular Steel Shape (圆形钢材)			
	最大吊重 Maximum Hangs the lifting capacity(Kg)	最小厚度 Minimum thickness (mm)	最大长度 Maximum length (mm)	最大吊重 Maximum Hangs the lifting capacity(Kg)	最大直径 Maximum diameter (mm)	最大长度 Maximum length (mm)	最小厚度 Minimum thickness (mm)
PML-300A	300	20	1500	150	300	1500	12
PML-600A	600	30	2000	300	400	2000	20
PML-1000A	1000	40	3000	500	450	3000	28
PML-1500A	1500	50	3000	750	500	3000	34
PML-2000A	2000	60	3000	1000	600	3000	40



ATTENTION: Never move the lever to the "ON" position unless the magnet is placed on an iron or steel object.