



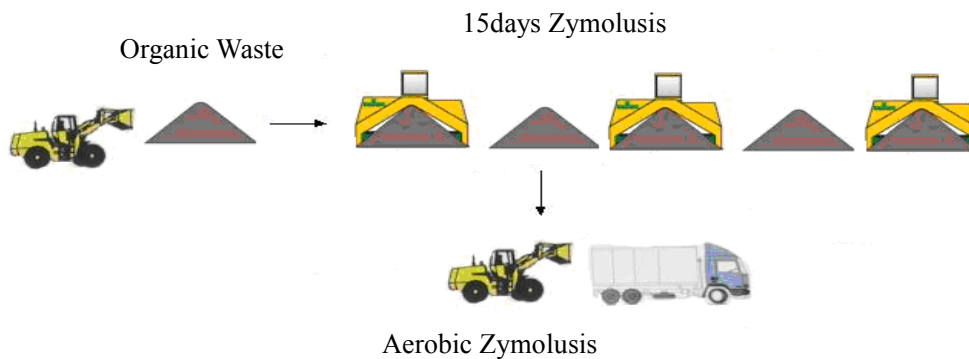
Tianjin Innovator Environmental Engineering Co.,Ltd

6-2-605 RongHe Plaza, Central Road, Airport Economic Development Zone, Tianjin, China

Tel:+86 22 84841648 Fax:+86 22 84841659 Email:Matthews@innorecycling.com

www.innorecycling.com

Stirring-thrower



After pre-separation processing system, materials can be fully stirred and mixed by stirring-thrower and turn into compost.

It is with high efficiency and compact structure, which is applicable to triangle accretion processing.

11. Star-shaped sieve

With high efficiency, the star-shaped sieve is used to sort out urban waste compost such as constructional waste, industrial waste, glasses, sandy mud, lime-ash, papers and paperboard.





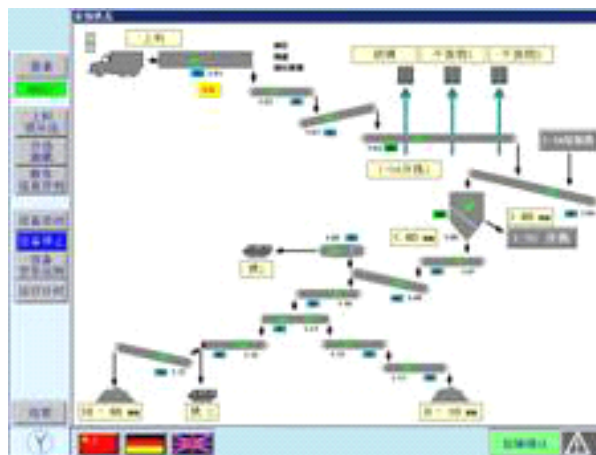
Tianjin Innovator Environmental Engineering Co.,Ltd

6-2-605 RongHe Plaza, Central Road, Airport Economic Development Zone, Tianjin, China
Tel:+86 22 84841648 Fax:+86 22 84841659 Email:Matthews@innorecycling.com
www.innorecycling.com

12. Electrical control system

The whole system consists of PC, PLC, on-site equipment, and uses industrial Ethernet and PROFIBUS DP to connect the above three parts into a control network. It aims to cover the whole production line to the maximum degree through video surveillance and host computer surveillance and to meet the requirements of waste processing management and automatic control. The system uses modern computer and industrial control equipment to achieve the informanization of production factors in waste processing such as automatic monitoring, management, and maintenance.

Automatic control system controls the on-site equipment according to various signals collected by PLC and its own procedures. Meanwhile, it uploads various states of on-site equipment to the host computer through the network. In the host computer through the control interface signals can be illustrated by graphs with different colors and shapes. On the other hand, it can send operator's order to the sorting line PLC and control the corresponding device to perform the relevant actions.



13. Storage Zymolysis

Storage Zymolysis System is mainly composed of seven systems: Ceiling material-distributing system, mobile vehicle feeding system, mobile material-distributing system, discharging system, ventilation system, control system of fermentation parameters, and deodorization system.

① Ceiling material-distributing system

After household garbage has been pre-sorted, those corrodible organic matter which are suitable to be composted will be sent to the ceiling material-distributing system of fermentation compartment in the composting plant. This fabric system consists of two parts: on the top there is a fixed belt conveyor, while on the bottom a reversible mobile belt conveyor. Materials will be transferred from the former to the latter so that they will finally be sent into the mobile material-distributing system in the fermentation





Tianjin Innovator Environmental Engineering Co.,Ltd

6-2-605 RongHe Plaza, Central Road, Airport Economic Development Zone, Tianjin, China
Tel:+86 22 84841648 Fax:+86 22 84841659 Email:Matthews@innorecycling.com
www.innorecycling.com

compartment.

② Mobile vehicle feeding system

Through mobile vehicle feeding system, mobile material-distributing machine will be sent into the fermentation compartment to hold materials from the top reversible material-distributing machine.

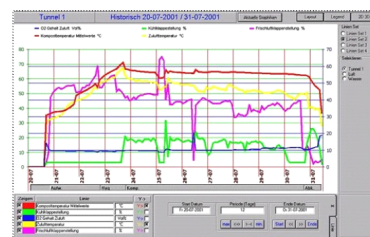
③ Mobile material-distributing system

Through mobile material-distributing system organic matter are distributed evenly in the fermentation tunnel which is completely closed throughout the fermentation process.



④ Control system

The fermentation tunnel is equipped with control system of temperature, humidity and oxygen, which can automatically adjust the fermentation parameters inside the fermentation compartment and create favorable conditions for the microbial activity of each phase and the decomposition of garbage within 2 weeks.

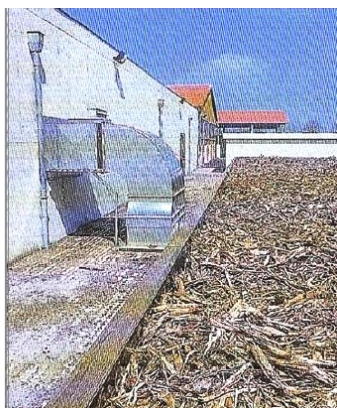
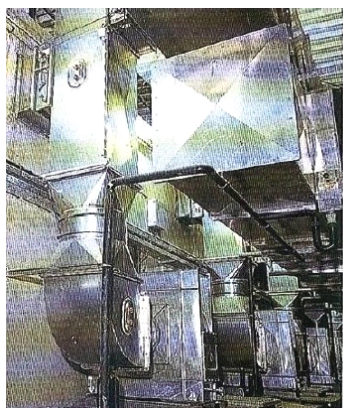


⑤ Discharging system

In the fermentation compartment use loader to discharge materials.

⑥ Ventilation system, exhaust gas and waste water treatment system

Fermentation compartment has ventilation and aeration system which provide adequate oxygen for the inside micro-organisms. Exhaust gas produced during the fermentation can be discharged after processed by the deodorization system which uses bio-filter system or tower deodorizing system. Waste water generated in the fermentation process can be reused in the composting process as compensation.



Fly With GEP Innovation, Make Our Lives Better

