

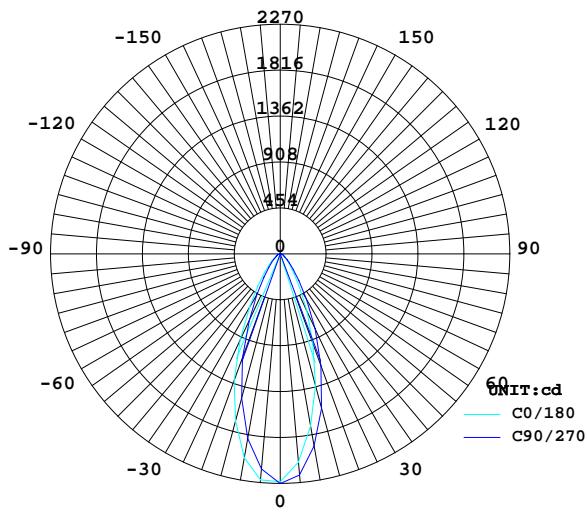
LUMINAIRE PHOTOMETRIC TEST REPORT

Report number:

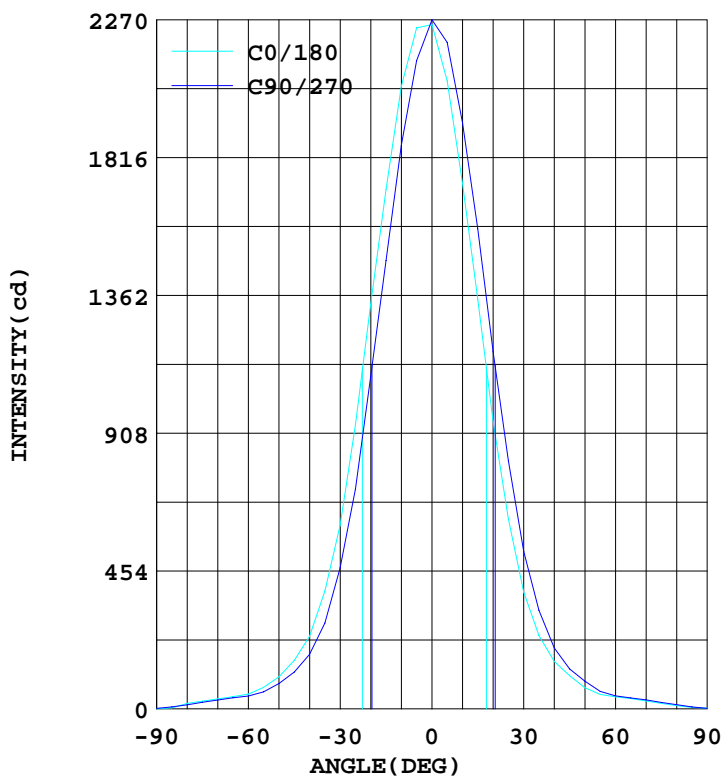
MANUFACTURER: Buddy Lighting	Address: Shenzhen, China	
NAME: down light	TYPE:	WEIGHT:
DIMENSION: 90	SPECIFICATION:	SERIAL No.:

DATA OF LAMP		PHOTOMETRIC DATA			
MODEL	13w-4000k	I _{max} (cd)	2271	S/MH(C0/180)	0.72
NOMINAL POWER(W)	14	EFFICIENCY(%)	119.2	S/MH(C90/270)	0.62
RATED VOLTAGE(V)	220	TOTAL FLUX(lm)	1421.3	η UP(C0-180)	
NOMINAL FLUX(lm)	1192.4	CIE CLASS	DIRECT	η DN(C0-180)	
LAMPS INSIDE	1	η up(%)	0.0	η UP(C180-360)	
TEST VOLTAGE(V)	219.0	η down(%)	119.2	η DN(C180-360)	

LUMINOUS INTENSITY DISTRIBUTION



LUMINOUS INTENSITY DISTRIBUTION



Test:U:219.0V I:0.074A P:14.70W PF:0.904

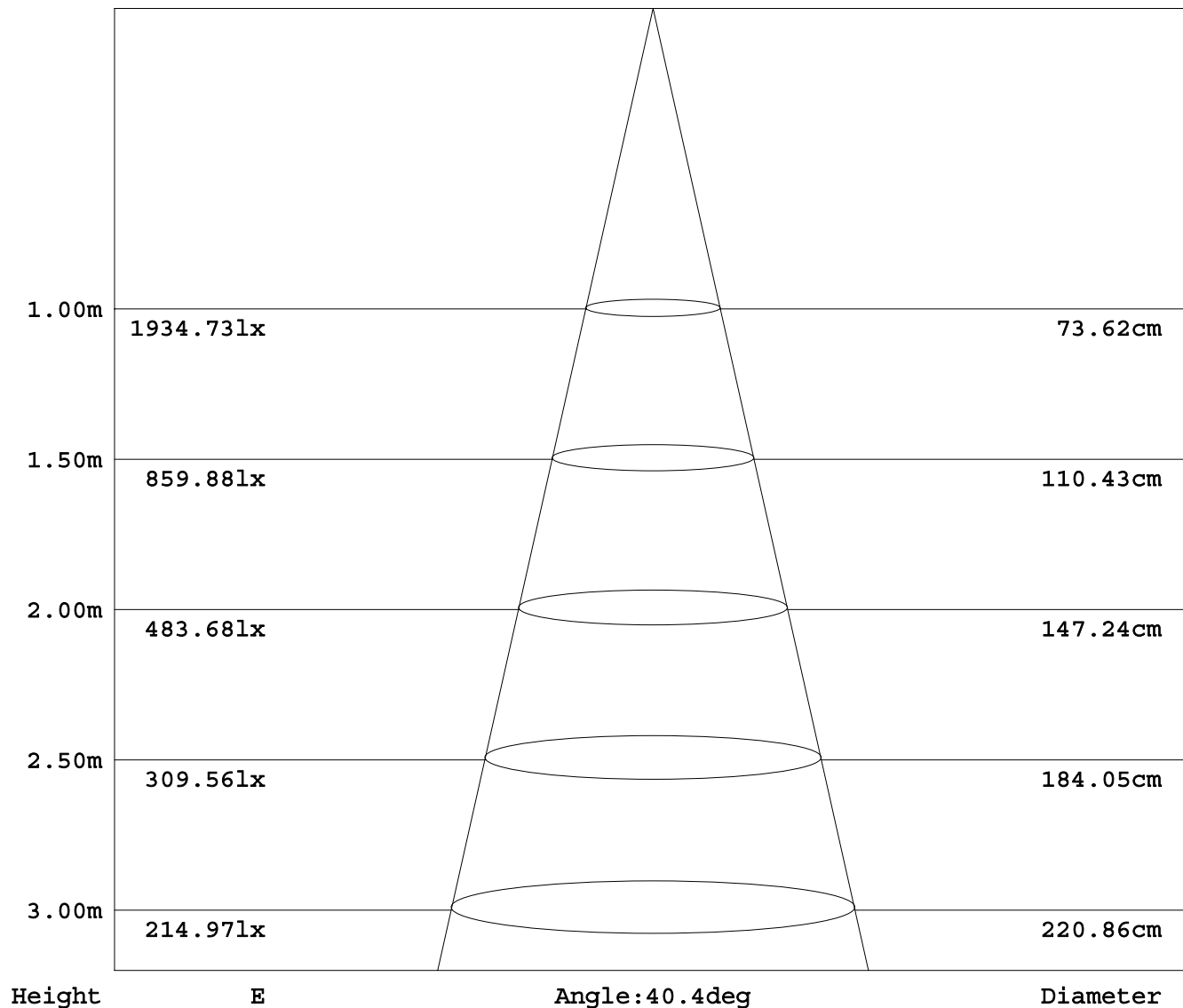
Test System:HONGPU HPG1800
 Temperature:25.3DEG
 Operators:
 Test Date:2012年11月30日

Test Set: 5.0deg/s C-Gamma (TYPE C)
 Humidity:65.0%
 Test Distance:3.000 m
 Remarks:

AVERAGE E Figure

Report number:

MANUFACTURER: Buddy Lighting	Address: Shenzhen, China	
NAME: down light	TYPE:	WEIGHT:
DIMENSION: 90	SPECIFICATION:	SERIAL No.:



Test System: HONGPU HPG1800
 Temperature: 25.3DEG
 Operators:
 Test Date: 2012年11月30日

Test Set: 5.0deg/s C-Gamma (TYPE C)
 Humidity: 65.0%
 Test Distance: 3.000 m
 Remarks:

HONGPU GONIOPHOTOMETERS SYSTEM TEST REPORT

ZONAL FLUX DIAGRAM

Report number:

MANUFACTURER: Buddy Lighting	Address: Shenzhen, China	
NAME: down light	TYPE:	WEIGHT:
DIMENSION: 90	SPECIFICATION:	SERIAL No.:

γ	C0	C45	C90	C135	C180	C225	C270	C315	γ	Φ zone	Φ total
10.0	2049	2044	1855	1695	1730	1762	1929	2079	0- 10	206	206
20.0	1333	1321	1094	916.6	946.4	977.1	1176	1375	10- 20	435	641
30.0	604.5	613.1	464.1	373.9	385.1	387.2	518.9	657.8	20- 30	363	1004
40.0	239.1	236.1	179.2	151.1	156.0	156.2	200.4	246.6	30- 40	197	1200
50.0	105.6	104.1	83.32	67.28	69.87	69.21	91.64	108.3	40- 50	102	1302
60.0	48.73	48.25	42.49	39.28	39.95	39.49	43.03	49.36	50- 60	52	1355
70.0	33.08	33.29	29.15	25.67	26.26	25.65	29.52	34.47	60- 70	36	1391
80.0	17.94	17.84	13.45	10.29	10.71	10.30	13.86	18.91	70- 80	23	1414
90.0	0.459	4.176	1.980	1.719	2.286	1.017	1.800	5.535	80- 90	7	1421
100.0									90-100		
110.0									100-110		
120.0									110-120		
130.0									120-130		
140.0									130-140		
150.0									140-150		
160.0									150-160		
170.0									160-170		
180.0									170-180		
DEG	LUMINOUS INTENSITY:cd									UNIT:lm	

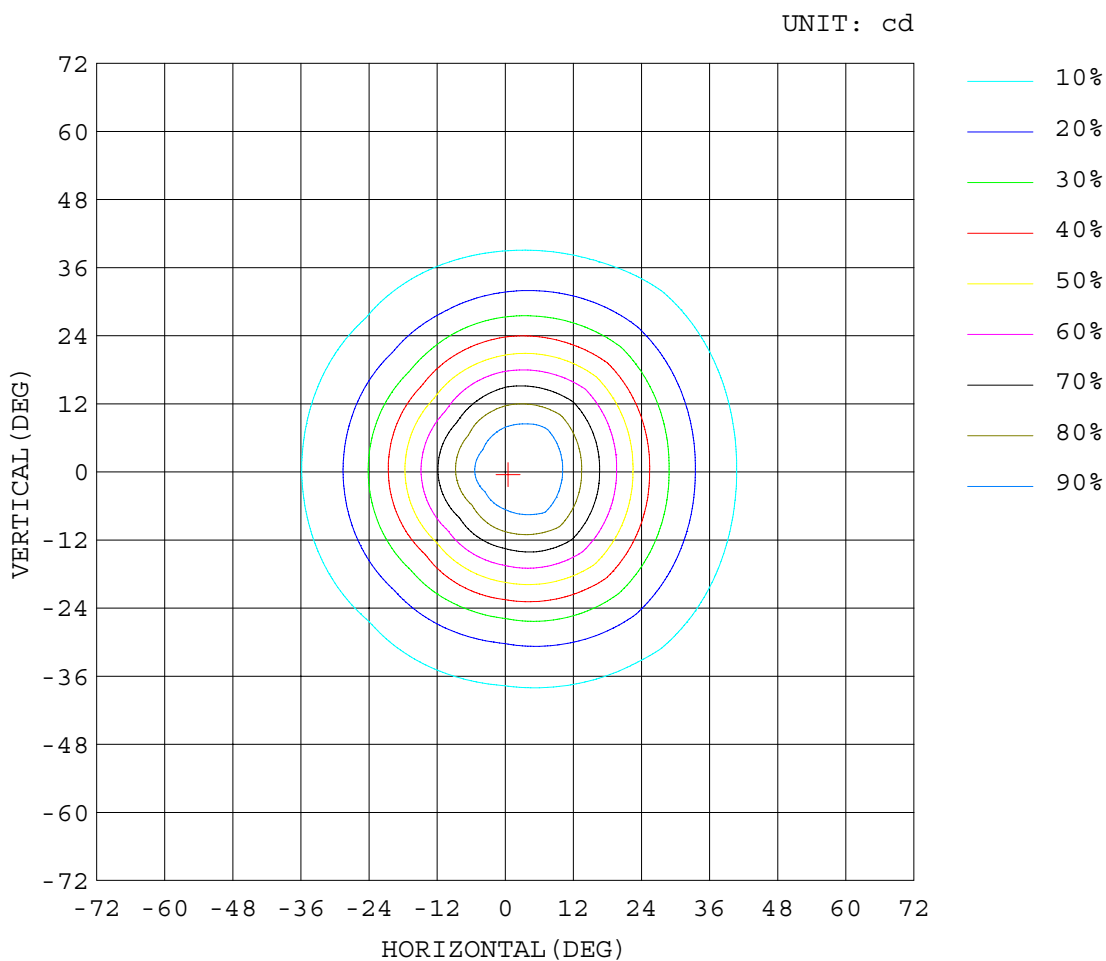
Test System:HONGPU HPG1800
 Temperature:25.3DEG
 Operators:
 Test Date:2012年11月30日

Test Set: 5.0deg/s C-Gamma (TYPE C)
 Humidity:65.0%
 Test Distance:3.000 m
 Remarks:

ISOCANDELA DIAGRAM

Report number:

MANUFACTURER: Buddy Lighting	Address: Shenzhen, China	
NAME: down light	TYPE:	WEIGHT:
DIMENSION: 90	SPECIFICATION:	SERIAL No.:



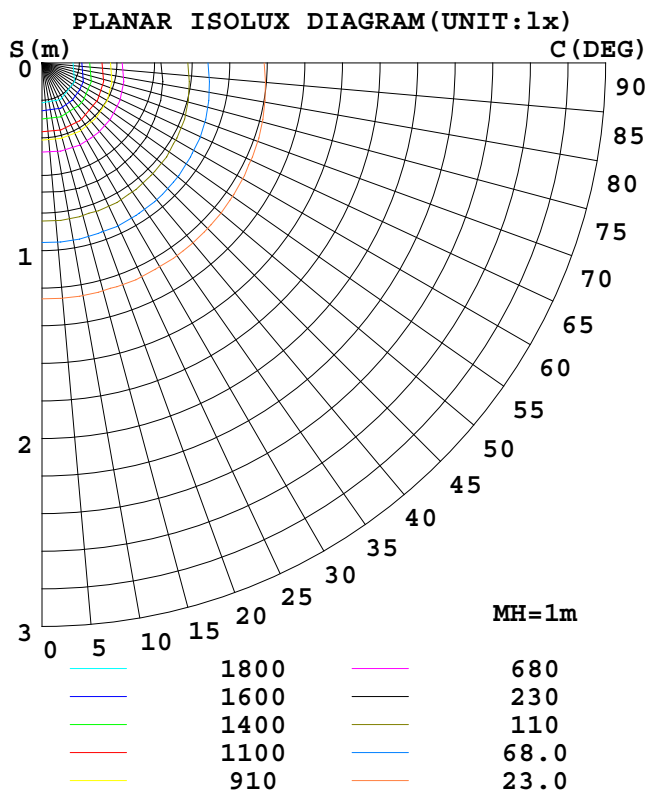
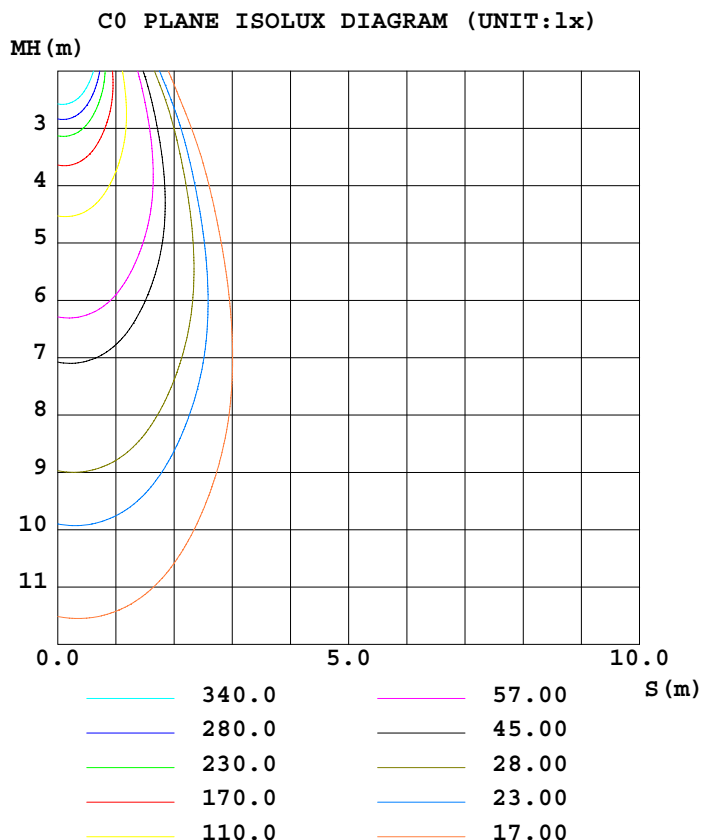
Test System: HONGPU HPG1800
 Temperature: 25.3 DEG
 Operators:
 Test Date: 2012年11月30日

Test Set: 5.0 deg/s C-Gamma (TYPE C)
 Humidity: 65.0%
 Test Distance: 3.000 m
 Remarks:

ISOLUX DIAGRAM

Report number:

MANUFACTURER: Buddy Lighting	Address: Shenzhen, China	
NAME: down light	TYPE:	WEIGHT:
DIMENSION: 90	SPECIFICATION:	SERIAL No.:



Test System:HONGPU HPG1800
 Temperature:25.3DEG
 Operators:
 Test Date:2012年11月30日

Test Set: 5.0deg/s C-Gamma (TYPE C)
 Humidity:65.0%
 Test Distance:3.000 m
 Remarks:

HONGPU GONIOPHOTOMETERS SYSTEM TEST REPORT

LUMINOUS DISTRIBUTION INTENSITY DATA

Report number:

MANUFACTURER: Buddy Lighting		Address: Shenzhen, China	
NAME: down light		TYPE:	WEIGHT:
DIMENSION: 90		SPECIFICATION:	SERIAL No.:

UNIT: cd

C (DEG) \ γ (DEG)	0	45	90	135	180	225	270	315
0.0	2254	2271	2270	2247	2254	2271	2270	2247
5.0	2243	2257	2135	2043	2068	2077	2195	2261
10.0	2049	2044	1855	1695	1730	1762	1929	2079
15.0	1711	1724	1476	1317	1349	1359	1581	1745
20.0	1333	1321	1094	917	946	977	1176	1375
25.0	937	950	724	609	626	630	818	977
30.0	605	613	464	374	385	387	519	658
35.0	388	388	283	228	242	243	325	405
40.0	239	236	179	151	156	156	200	247
45.0	160	157	122	104	109	109	131	163
50.0	106	104	83.3	67.2	69.8	69.2	91.6	108
55.0	70.6	68.0	55.8	46.6	47.5	47.9	57.7	71.9
60.0	48.7	48.2	42.4	39.2	39.9	39.4	43.0	49.3
65.0	40.4	39.4	36.4	32.9	33.7	33.4	36.2	40.9
70.0	33.0	33.2	29.1	25.6	26.2	25.6	29.5	34.4
75.0	25.7	25.3	21.7	17.7	18.0	18.2	21.5	26.9
80.0	17.9	17.8	13.4	10.2	10.7	10.3	13.8	18.9
85.0	3.67	9.95	6.76	4.62	5.03	4.57	6.77	11.2
90.0	0.46	4.17	1.98	1.71	2.28	1.01	1.80	5.53

Test System: HONGPU HPG1800
 Temperature: 25.3 DEG
 Operators:
 Test Date: 2012年11月30日

Test Set: 5.0deg/s C-Gamma (TYPE C)
 Humidity: 65.0%
 Test Distance: 3.000 m
 Remarks: