

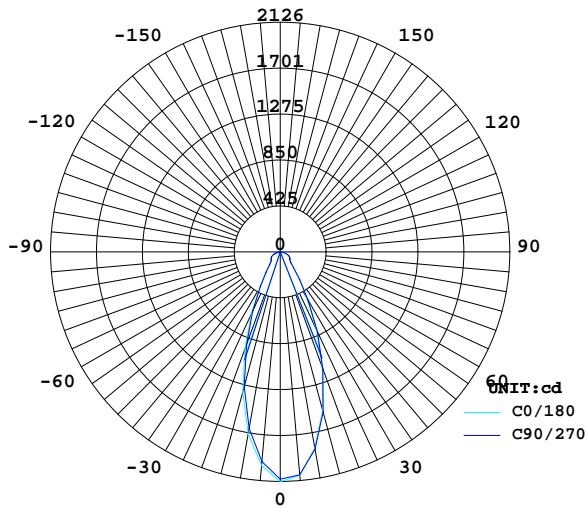
LUMINAIRE PHOTOMETRIC TEST REPORT

Report number:

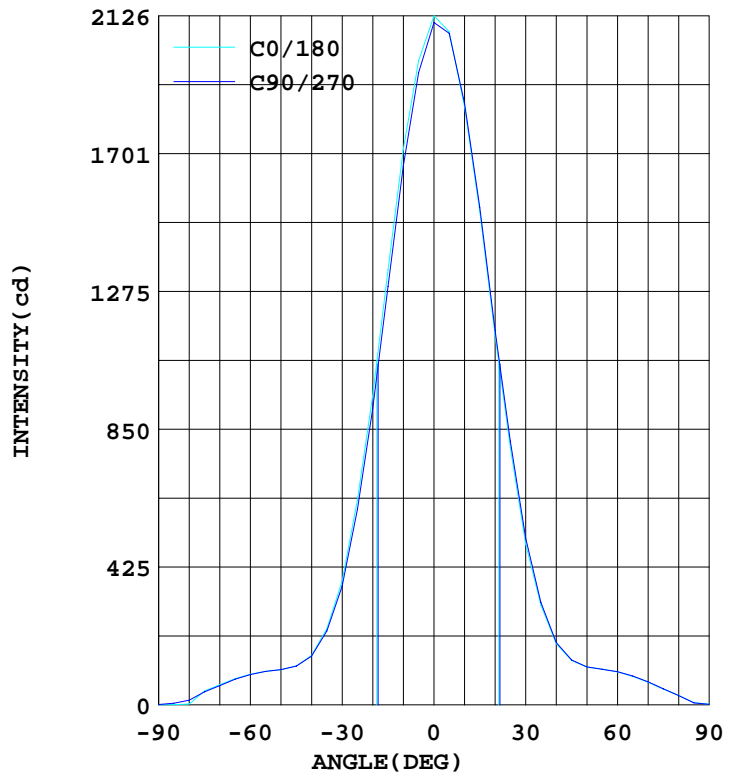
MANUFACTURER: Buddy Lighting	Address: Shenzhen, China	
NAME: down light	TYPE:	WEIGHT:
DIMENSION: 95	SPECIFICATION:	SERIAL No.:

DATA OF LAMP		PHOTOMETRIC DATA			
MODEL	1205-13w-40lm	Imax(cd)	2126	S/MH(C0/180)	0.60
NOMINAL POWER(W)	14	EFFICIENCY(%)	118.0	S/MH(C90/270)	0.58
RATED VOLTAGE(V)	218	TOTAL FLUX(lm)	1425.8	η UP(C0-180)	
NOMINAL FLUX(lm)	1208.4	CIE CLASS	DIRECT	η DN(C0-180)	
LAMPS INSIDE	1	η up(%)	0.0	η UP(C180-360)	
TEST VOLTAGE(V)	218.9	η down(%)	118.0	η DN(C180-360)	

LUMINOUS INTENSITY DISTRIBUTION



LUMINOUS INTENSITY DISTRIBUTION



Test:U:218.8V I:0.073A P:14.40W PF:0.904

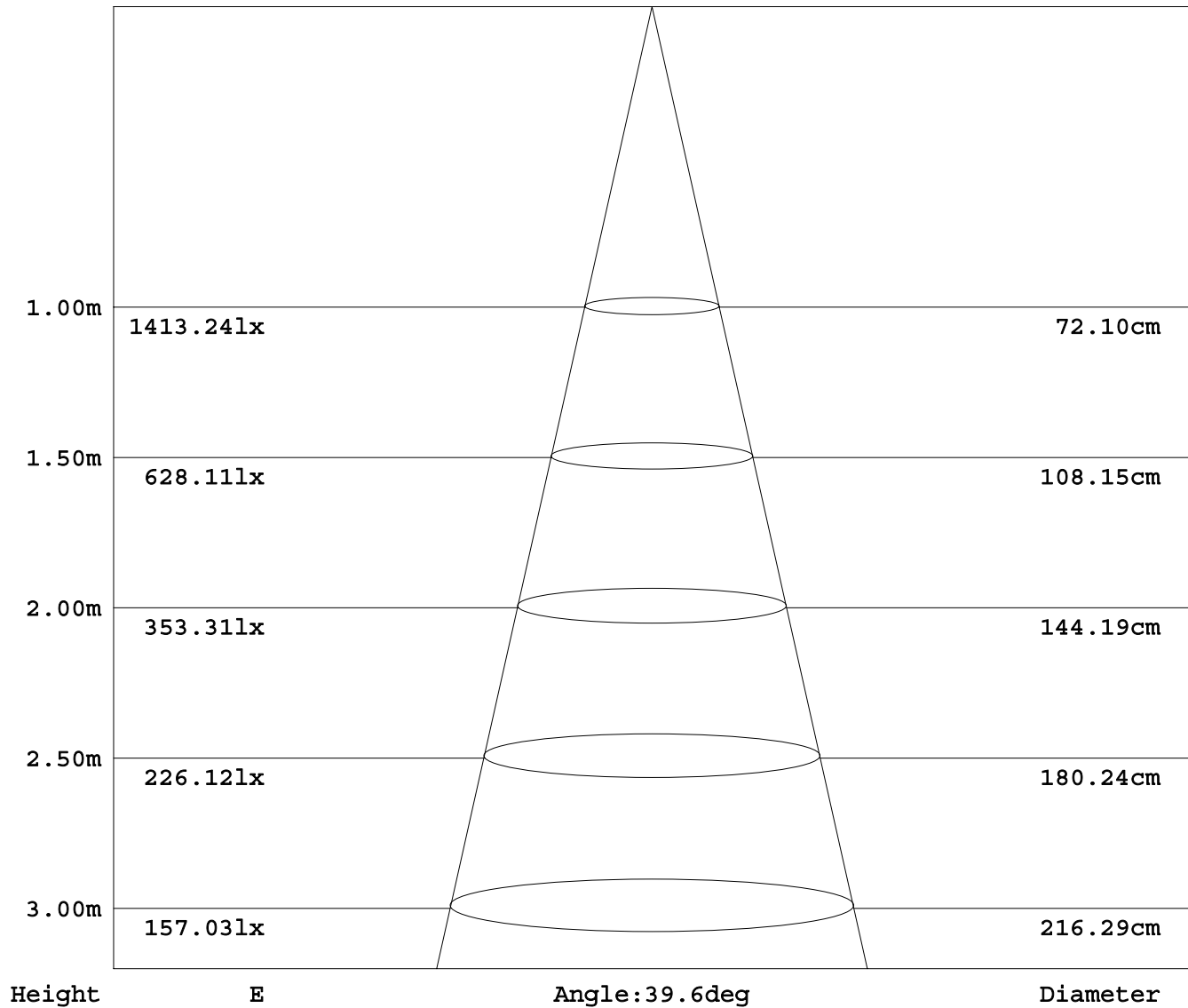
Test System:HONGPU HPG1800
 Temperature:25.3DEG
 Operators:
 Test Date:2012年11月30日

Test Set: 5.0deg/s C-Gamma (TYPE C)
 Humidity:65.0%
 Test Distance:3.000 m
 Remarks:

AVERAGE E Figure

Report number:

MANUFACTURER: Buddy Lighting	Address: Shenzhen, China	
NAME: down light	TYPE:	WEIGHT:
DIMENSION: 95	SPECIFICATION:	SERIAL No.:



Test System: HONGPU HPG1800
 Temperature: 25.3DEG
 Operators:
 Test Date: 2012年11月30日

Test Set: 5.0deg/s C-Gamma (TYPE C)
 Humidity: 65.0%
 Test Distance: 3.000 m
 Remarks:

HONGPU GONIOPHOTOMETERS SYSTEM TEST REPORT

ZONAL FLUX DIAGRAM

Report number:

MANUFACTURER: Buddy Lighting	Address: Shenzhen, China	
NAME: down light	TYPE:	WEIGHT:
DIMENSION: 95	SPECIFICATION:	SERIAL No.:

γ	C0	C45	C90	C135	C180	C225	C270	C315	γ	Φ zone	Φ total
10.0	1713	1715	1661	1676	1845	1836	1856	1826	0- 10	193	193
20.0	953.5	979.9	913.2	962.8	1140	1128	1155	1125	10- 20	403	595
30.0	381.2	398.6	365.7	391.2	496.3	476.2	513.9	469.8	20- 30	328	924
40.0	152.3	155.9	150.4	156.4	188.9	179.4	192.3	179.9	30- 40	170	1094
50.0	108.2	108.7	108.6	110.7	116.8	115.6	117.1	114.1	40- 50	99	1193
60.0	94.34	95.91	93.59	95.45	102.1	102.0	102.4	100.4	50- 60	96	1289
70.0	61.96	63.75	59.54	61.17	69.90	69.63	71.12	69.20	60- 70	84	1372
80.0	2.688	18.91	14.50	20.11	29.48	27.65	28.93	24.73	70- 80	48	1420
90.0	0.519	0.902	1.216	1.037	2.050	2.050	1.573	1.718	80- 90	6	1426
100.0									90-100		
110.0									100-110		
120.0									110-120		
130.0									120-130		
140.0									130-140		
150.0									140-150		
160.0									150-160		
170.0									160-170		
180.0									170-180		
DEG	LUMINOUS INTENSITY:cd									UNIT:lm	

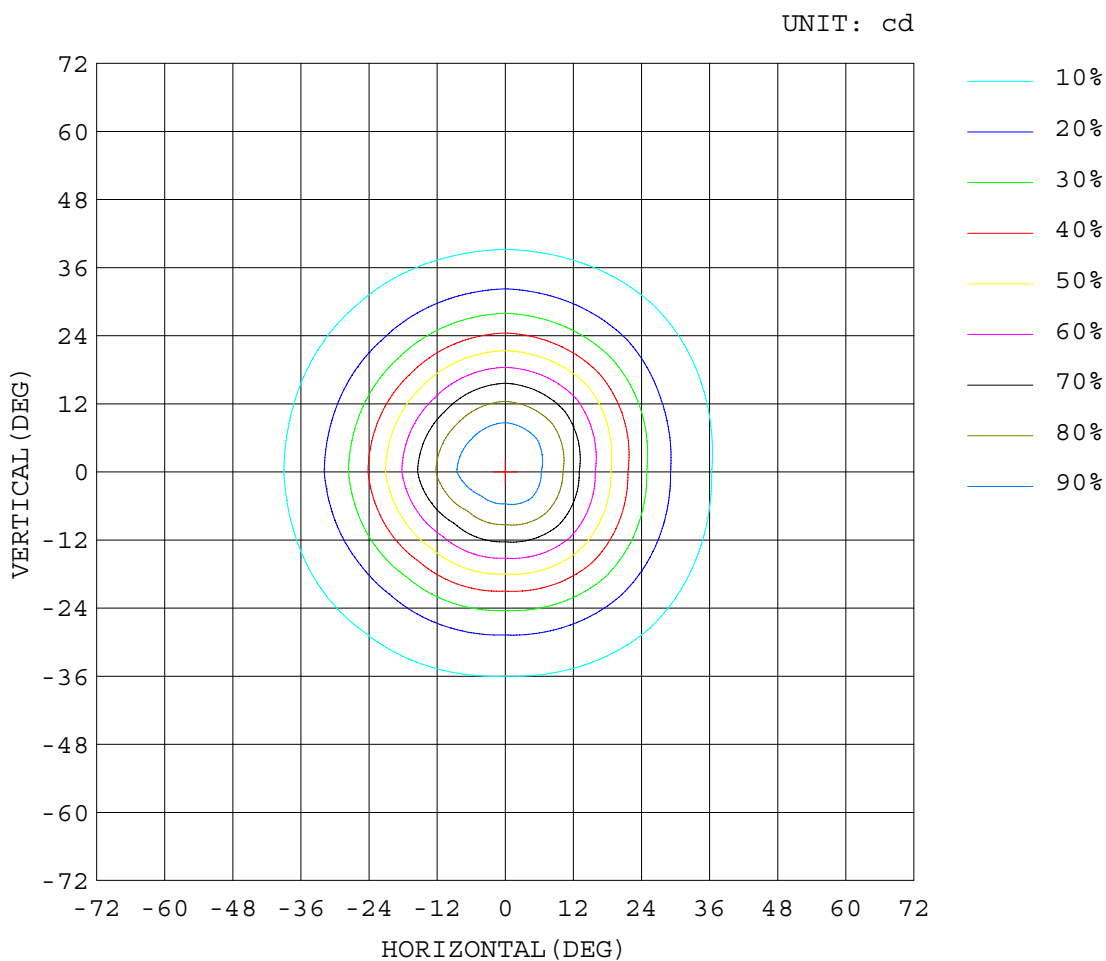
Test System:HONGPU HPG1800
 Temperature:25.3DEG
 Operators:
 Test Date:2012年11月30日

Test Set: 5.0deg/s C-Gamma (TYPE C)
 Humidity:65.0%
 Test Distance:3.000 m
 Remarks:

ISOCANDELA DIAGRAM

Report number:

MANUFACTURER: Buddy Lighting	Address: Shenzhen, China	
NAME: down light	TYPE:	WEIGHT:
DIMENSION: 95	SPECIFICATION:	SERIAL No.:



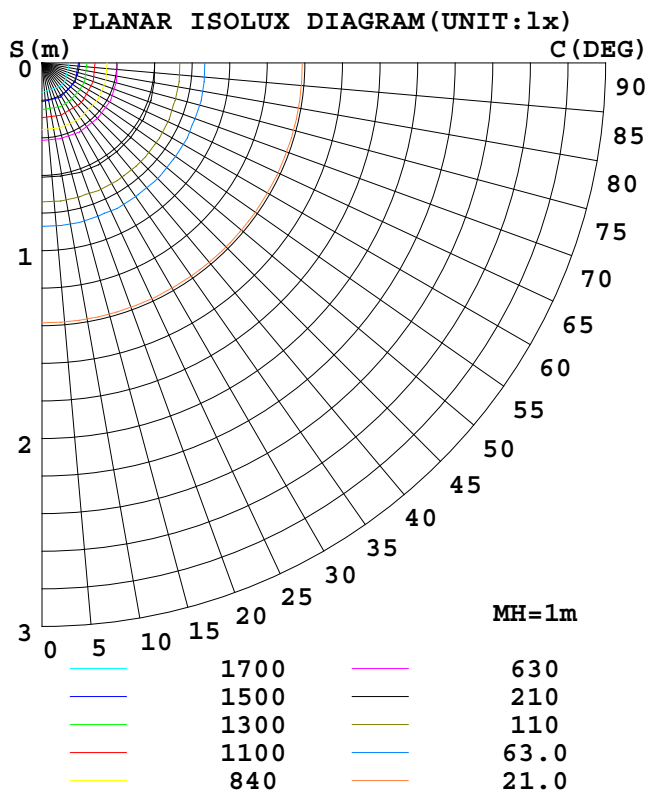
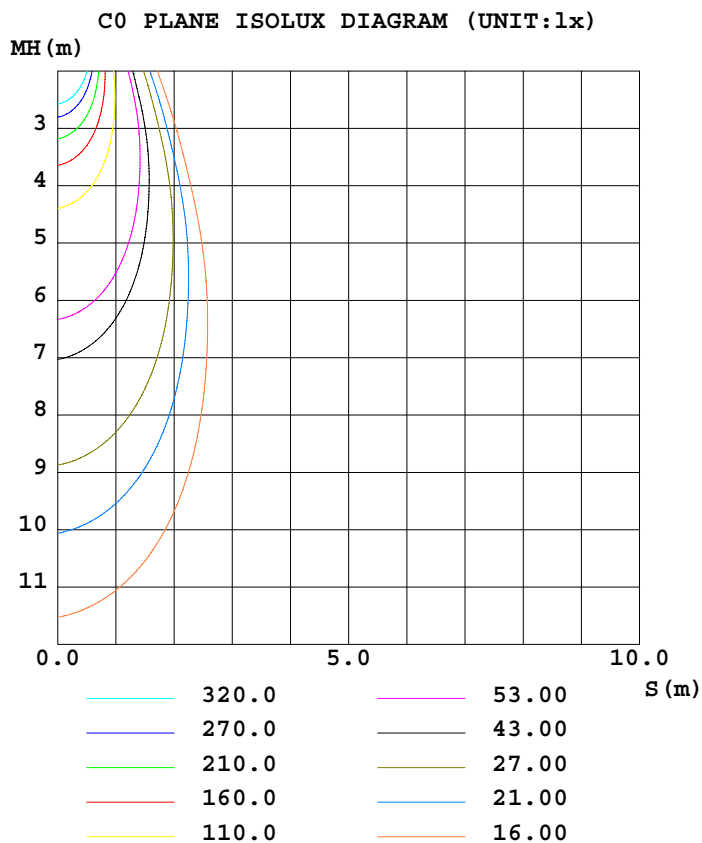
Test System: HONGPU HPG1800
 Temperature: 25.3 DEG
 Operators:
 Test Date: 2012年11月30日

Test Set: 5.0 deg/s C-Gamma (TYPE C)
 Humidity: 65.0%
 Test Distance: 3.000 m
 Remarks:

ISOLUX DIAGRAM

Report number:

MANUFACTURER: Buddy Lighting	Address: Shenzhen, China	
NAME: down light	TYPE:	WEIGHT:
DIMENSION: 95	SPECIFICATION:	SERIAL No.:



Test System: HONGPU HPG1800
 Temperature: 25.3 DEG
 Operators:
 Test Date: 2012年11月30日

Test Set: 5.0 deg/s C-Gamma (TYPE C)
 Humidity: 65.0%
 Test Distance: 3.000 m
 Remarks:

HONGPU GONIOPHOTOMETERS SYSTEM TEST REPORT

LUMINOUS DISTRIBUTION INTENSITY DATA

Report number:

MANUFACTURER: Buddy Lighting		Address: Shenzhen, China	
NAME: down light		TYPE:	WEIGHT:
DIMENSION: 95		SPECIFICATION:	SERIAL No.:

UNIT: cd

γ (DEG)	C (DEG)							
	0	45	90	135	180	225	270	315
0.0	2126	2120	2105	2098	2126	2120	2105	2098
5.0	1986	2000	1950	1969	2076	2060	2072	2043
10.0	1713	1715	1661	1676	1845	1836	1856	1826
15.0	1342	1368	1291	1334	1522	1489	1535	1482
20.0	954	980	913	963	1140	1128	1155	1125
25.0	633	656	603	648	793	767	813	762
30.0	381	399	366	391	496	476	514	470
35.0	235	245	228	248	308	293	316	288
40.0	152	156	150	156	189	179	192	180
45.0	120	121	120	123	137	132	139	132
50.0	108	109	109	111	117	116	117	114
55.0	103	104	104	105	110	110	110	108
60.0	94.3	95.9	93.5	95.4	102	102	102	100
65.0	80.6	81.6	79.0	79.6	87.9	88.7	88.9	87.8
70.0	61.9	63.7	59.5	61.1	69.9	69.6	71.1	69.2
75.0	42.8	42.8	40.4	40.5	48.5	49.2	49.7	49.2
80.0	2.68	18.9	14.5	20.1	29.4	27.6	28.9	24.7
85.0	0.55	4.63	4.98	4.80	6.93	6.69	6.32	6.17
90.0	0.52	0.90	1.21	1.03	2.05	2.05	1.57	1.71

Test System: HONGPU HPG1800
 Temperature: 25.3 DEG
 Operators:
 Test Date: 2012年11月30日

Test Set: 5.0deg/s C-Gamma (TYPE C)
 Humidity: 65.0%
 Test Distance: 3.000 m
 Remarks: