

LUMINAIRE PHOTOMETRIC TEST REPORT

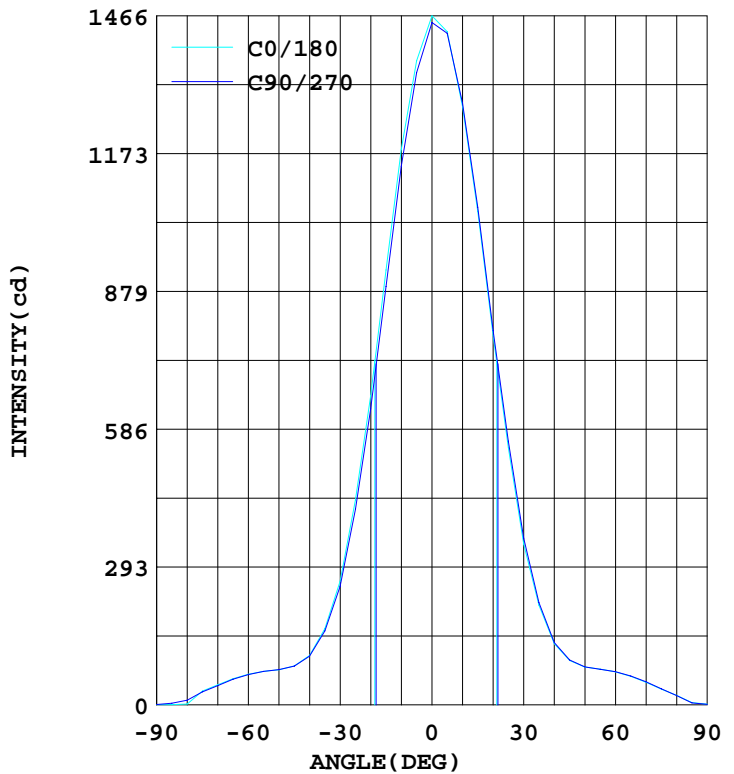
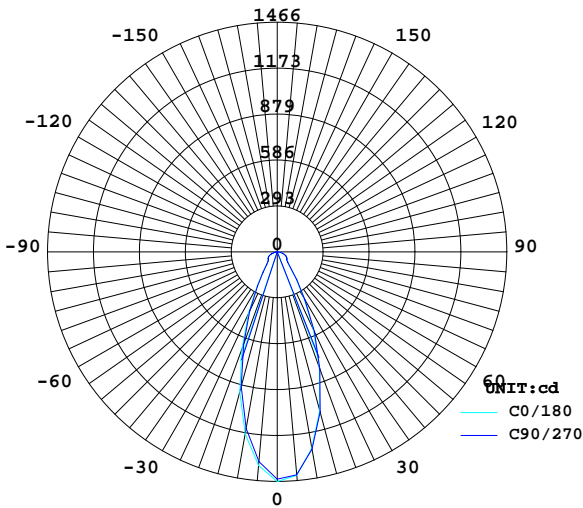
Report number:

MANUFACTURER: Buddy Lighting	Address: Shenzhen, China	
NAME: down light	TYPE:	WEIGHT:
DIMENSION: 95	SPECIFICATION:	SERIAL No.:

DATA OF LAMP		PHOTOMETRIC DATA			
MODEL	1205-13w-300lm	Imax(cd)	1466	S/MH(C0/180)	0.60
NOMINAL POWER(W)	14	EFFICIENCY(%)	102.3	S/MH(C90/270)	0.58
RATED VOLTAGE(V)	218	TOTAL FLUX(lm)	1133.9	η UP(C0-180)	
NOMINAL FLUX(lm)	1108.4	CIE CLASS	DIRECT	η DN(C0-180)	
LAMPS INSIDE	1	η up(%)	0.0	η UP(C180-360)	
TEST VOLTAGE(V)	218.9	η down(%)	102.3	η DN(C180-360)	

LUMINOUS INTENSITY DISTRIBUTION

LUMINOUS INTENSITY DISTRIBUTION



Test: U:218.8V I:0.073A P:14.40W PF:0.904

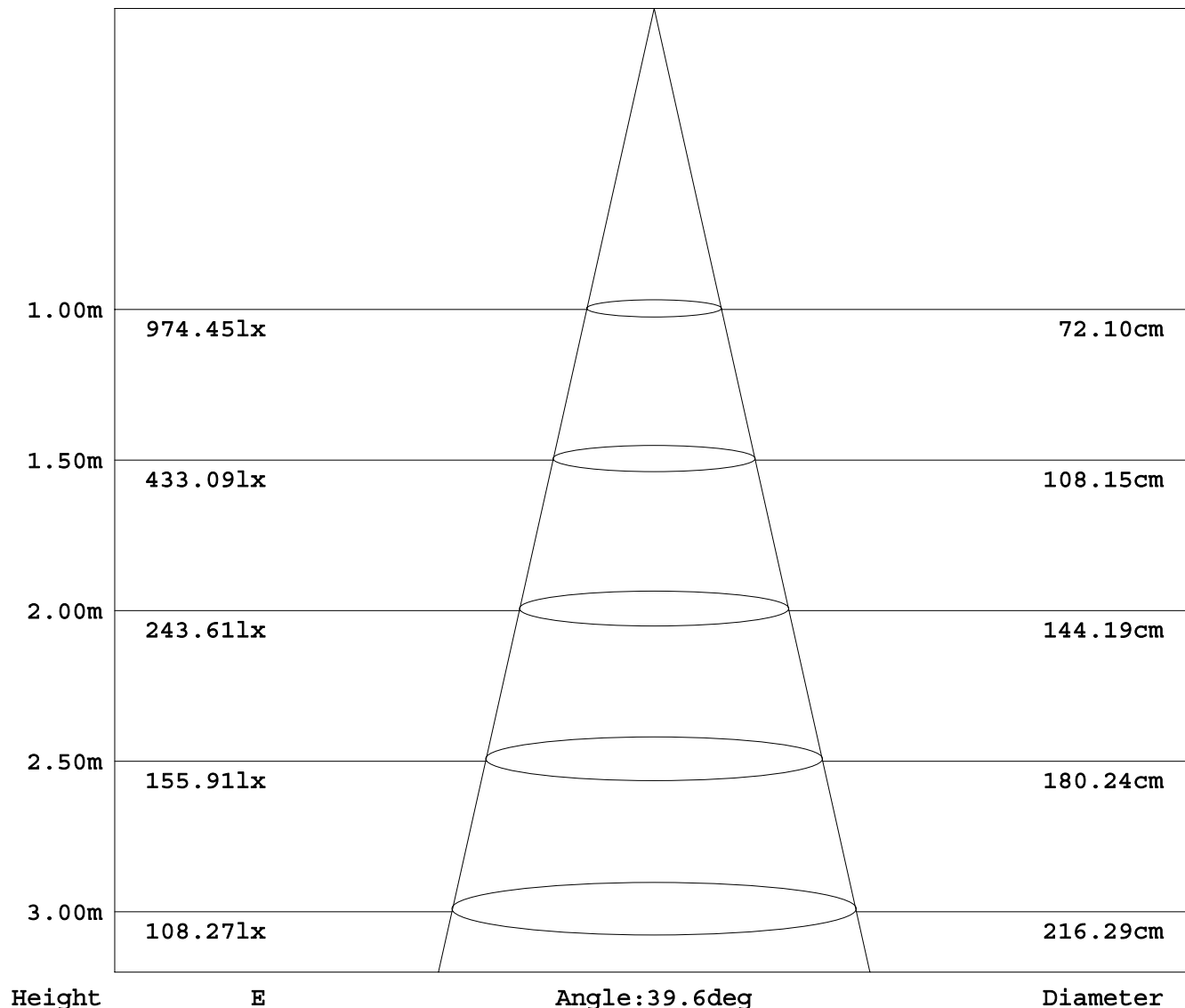
Test System: HONGPU HPG1800
 Temperature: 25.3 DEG
 Operators:
 Test Date: 2012年11月30日

Test Set: 5.0deg/s C-Gamma (TYPE C)
 Humidity: 65.0%
 Test Distance: 3.000 m
 Remarks:

AVERAGE E Figure

Report number:

MANUFACTURER: Buddy Lighting	Address:Shenzhen, China	
NAME: down light	TYPE:	WEIGHT:
DIMENSION: 95	SPECIFICATION:	SERIAL No.:



Test System:HONGPU HPG1800
 Temperature:25.3DEG
 Operators:
 Test Date:2012年11月30日

Test Set: 5.0deg/s C-Gamma (TYPE C)
 Humidity:65.0%
 Test Distance:3.000 m
 Remarks:

HONGPU GONIOPHOTOMETERS SYSTEM TEST REPORT

ZONAL FLUX DIAGRAM

Report number:

MANUFACTURER: Buddy Lighting	Address:Shenzhen, China	
NAME: down light	TYPE:	WEIGHT:
DIMENSION: 95	SPECIFICATION:	SERIAL No.:

γ	C0	C45	C90	C135	C180	C225	C270	C315	γ	Φ zone	Φ total
10.0	1181	1182	1145	1156	1272	1266	1279	1259	0- 10	133	133
20.0	657.4	675.6	629.7	663.9	785.8	777.4	796.1	775.9	10- 20	278	411
30.0	262.8	274.8	252.1	269.7	342.2	328.3	354.3	323.9	20- 30	226	637
40.0	105.0	107.5	103.7	107.8	130.3	123.7	132.6	124.0	30- 40	117	754
50.0	74.61	74.97	74.91	76.36	80.59	79.74	80.78	78.71	40- 50	68	822
60.0	65.05	66.13	64.53	65.82	70.44	70.39	70.61	69.27	50- 60	66	888
70.0	42.72	43.95	41.05	42.18	48.19	48.01	49.03	47.71	60- 70	58	946
80.0	1.853	13.03	10.00	13.86	20.33	19.06	19.94	17.05	70- 80	33	979
90.0	0.358	0.622	0.839	0.716	1.413	1.413	1.085	1.184	80- 90	4	983
100.0									90-100		
110.0									100-110		
120.0									110-120		
130.0									120-130		
140.0									130-140		
150.0									140-150		
160.0									150-160		
170.0									160-170		
180.0									170-180		
DEG	LUMINOUS INTENSITY:cd									UNIT:lm	

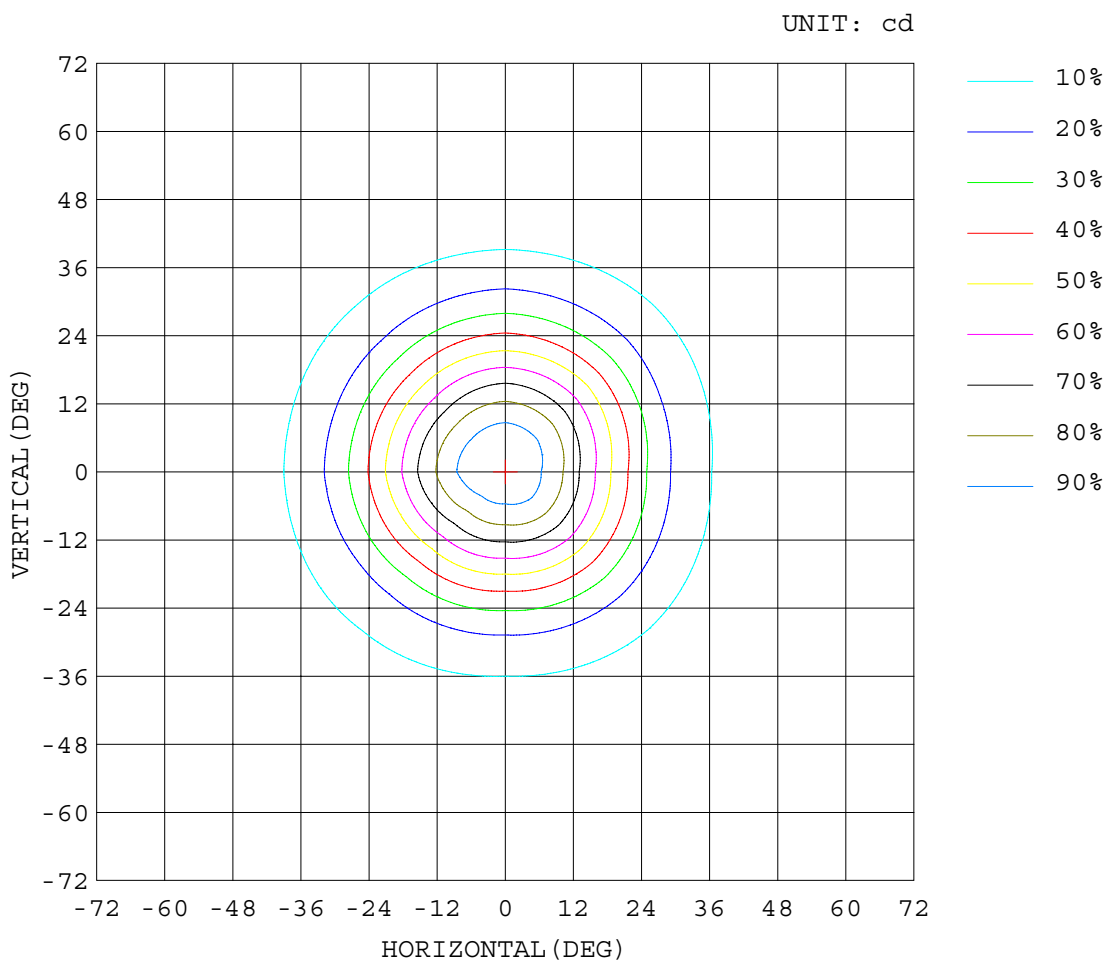
Test System:HONGPU HPG1800
 Temperature:25.3DEG
 Operators:
 Test Date:2012年11月30日

Test Set: 5.0deg/s C-Gamma (TYPE C)
 Humidity:65.0%
 Test Distance:3.000 m
 Remarks:

ISOCANDELA DIAGRAM

Report number:

MANUFACTURER: Buddy Lighting	Address:Shenzhen, China	
NAME: down light	TYPE:	WEIGHT:
DIMENSION: 95	SPECIFICATION:	SERIAL No.:



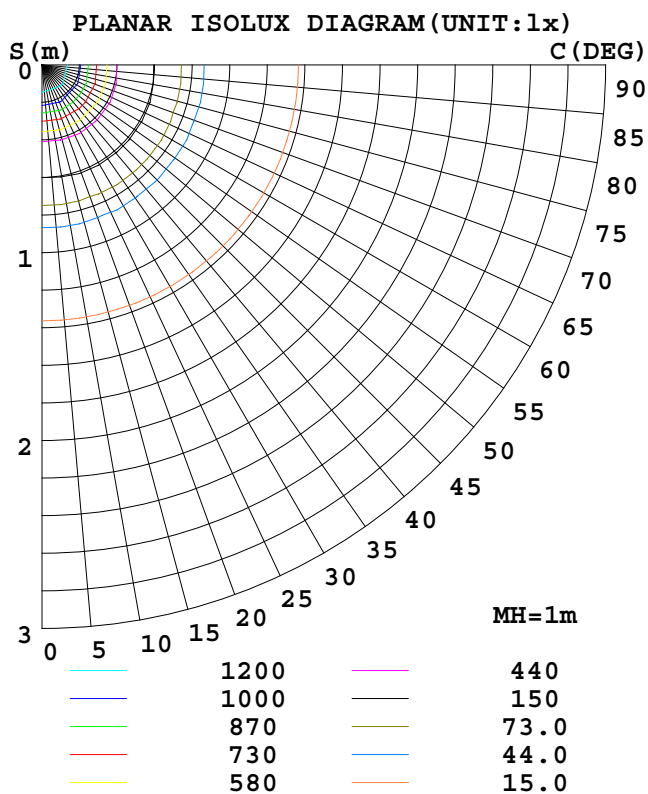
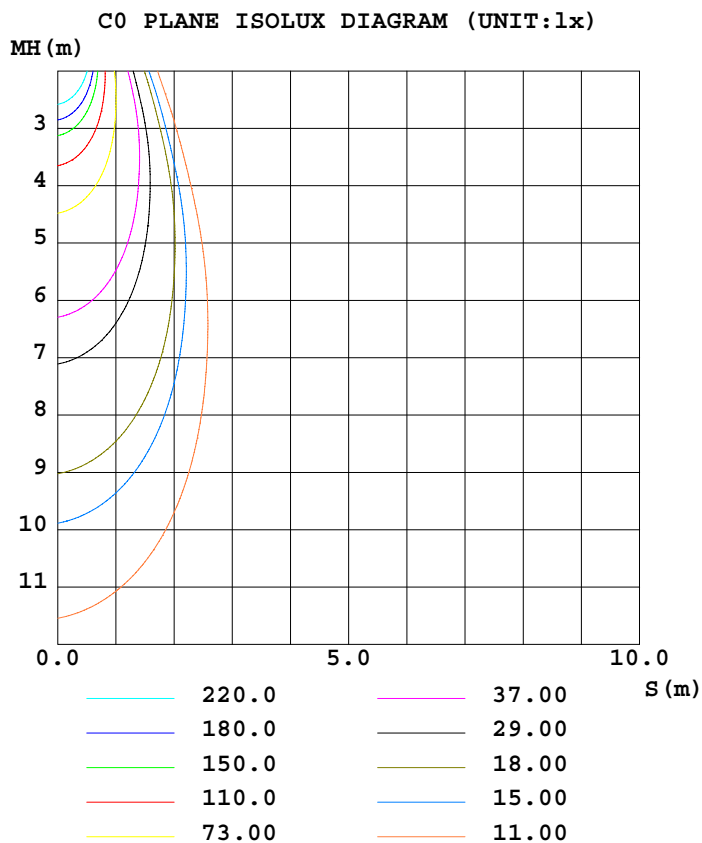
Test System:HONGPU HPG1800
 Temperature:25.3DEG
 Operators:
 Test Date:2012年11月30日

Test Set: 5.0deg/s C-Gamma (TYPE C)
 Humidity:65.0%
 Test Distance:3.000 m
 Remarks:

ISOLUX DIAGRAM

Report number:

MANUFACTURER: Buddy Lighting	Address:Shenzhen, China	
NAME: down light	TYPE:	WEIGHT:
DIMENSION: 95	SPECIFICATION:	SERIAL No.:



Test System:HONGPU HPG1800
 Temperature:25.3DEG
 Operators:
 Test Date:2012年11月30日

Test Set: 5.0deg/s C-Gamma (TYPE C)
 Humidity:65.0%
 Test Distance:3.000 m
 Remarks:

HONGPU GONIOPHOTOMETERS SYSTEM TEST REPORT

LUMINOUS DISTRIBUTION INTENSITY DATA

Report number:

MANUFACTURER: Buddy Lighting		Address:Shenzhen, China	
NAME: down light		TYPE:	WEIGHT:
DIMENSION: 95		SPECIFICATION:	SERIAL No.:

UNIT: cd

C (DEG) \ γ (DEG)	0	45	90	135	180	225	270	315
0.0	1466	1462	1451	1447	1466	1462	1451	1447
5.0	1370	1379	1345	1357	1432	1421	1428	1409
10.0	1181	1182	1145	1156	1272	1266	1279	1259
15.0	925	943	890	920	1050	1026	1058	1022
20.0	657	676	630	664	786	777	796	776
25.0	436	453	416	447	547	529	561	525
30.0	263	275	252	270	342	328	354	324
35.0	162	169	157	171	212	202	218	199
40.0	105	108	104	108	130	124	133	124
45.0	82.7	83.2	82.4	84.7	94.3	91.0	95.5	91.3
50.0	74.6	74.9	74.9	76.3	80.5	79.7	80.7	78.7
55.0	71.2	71.5	71.4	72.4	76.1	76.1	75.8	74.5
60.0	65.0	66.1	64.5	65.8	70.4	70.3	70.6	69.2
65.0	55.6	56.2	54.4	54.9	60.6	61.1	61.2	60.5
70.0	42.7	43.9	41.0	42.1	48.1	48.0	49.0	47.7
75.0	29.5	29.5	27.9	27.9	33.4	33.9	34.2	33.9
80.0	1.85	13.0	10.0	13.8	20.3	19.0	19.9	17.0
85.0	0.38	3.19	3.43	3.31	4.78	4.61	4.35	4.25
90.0	0.36	0.62	0.84	0.72	1.41	1.41	1.08	1.18

Test System:HONGPU HPG1800
 Temperature:25.3DEG
 Operators:
 Test Date:2012年11月30日

Test Set: 5.0deg/s C-Gamma (TYPE C)
 Humidity:65.0%
 Test Distance:3.000 m
 Remarks: