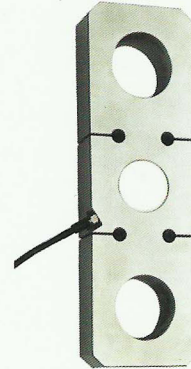


## 产品特点：

- ◆拉式传感器，精度高，专用于吊秤，无螺纹连接，安全性强。
- ◆按国际衡器组织协会 OIML C3 标准生产。
- ◆防水等级：IP66。

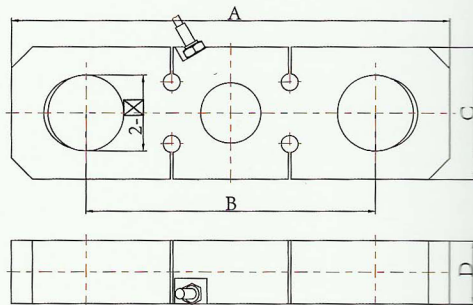
## Features :

- ◆High precision tension loadcell.
- ◆Equivalent to OIML R60 C3 regulations up to 3000d for scales class III.
- ◆Protection to IP66.



## ■ 尺寸规格表 ( Dimensions ) :

CAP (t) 量程 (t)	A(mm)	C(mm)	D(mm)	B(mm)	2-Φ(mm)
5	190	55	30	137	27
10	245	70	36	168	41
20	312	94	45	206	54
30	370	114	50	246	60
50	460	140	60	309	73
100	580	180	80	389	99
150	690	220	90	456	112
200	800	250	100	534	134



**Warning:** It will affect the function of sensor to change the cable's length!

## ■ 主要技术参数 ( Main technical data ) :

输出灵敏度(Output sensitivity)	mV/V	2.0
非线性(Nonlinearity)	%FS	≤0.03
滞后(Hysteresis)	%FS	≤0.03
重复性(Repeatability)	%FS	≤0.02
零点范围(Zero balance)	%FS	≤1.00
蠕变 ( 30分钟 ) (Creep (in 30min))	%FS/30min	≤0.02
零点补偿范围 ( Zero Temp.coefficient)	%FS/10°C	≤0.04
输入阻抗(Rated output Temp.coefficient)	Ω	385±10
输出阻抗(Input resistance)	Ω	350±3
绝缘阻抗(Output resistance)	MΩ	≥5000
安全极限载荷(Insulation resistance)	%FS	150
破坏极限载荷(Safe overload)	%FS	400
正常工作温度范围(Compensated Temp.range)	°C	-10~+40
推荐激励电压(Recommended Supply voltage)	V	5~15
4芯带屏蔽线，线长:3米(4-Core shield cable 3 m)	4-Core shield cable 3 mInput	+ : Red- : Black
	Output	+ : Green- : White
	Shield	Yellow or Bare