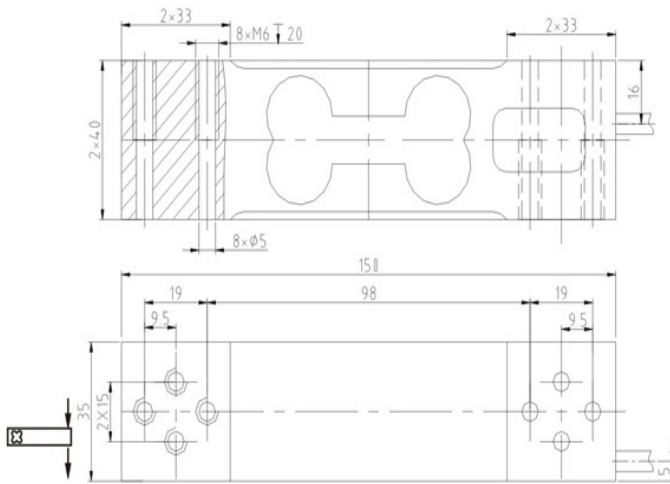


UDB

### Load cell UDB



- ◆Name: Load cell
- ◆Modl: UDB
- ◆UDB load cells are available in the capacities 50kg to 200kg.
- ◆Alumium constructionm with parallel beam.
- ◆Silicon adhesive sealed, surface anodized and anti-corrosion.
- ◆Intergral structure and easy installation.
- ◆Suitable for pricing scales, platform scales and other electronic weighing devices.
- ◆Capacit:50kg to 200kg .
- ◆High accuracy.
- ◆Max. platform size: 300x400mm (15-50kg); 400x500mm(100kg-200kg)
- ◆With OIML approval.



额定载荷 Rated Load	15,30,50,100,200kg	工作温度范围 Operating Temp Range	-20~50℃
灵敏度 Sensitivity	2.0±0.2mV/V	安全过载 Safe load limit	150%F.S
综合误差 Total error	C3	极限过载 Over load limit	300%F.S
蠕变 (30分钟) Creep(30min)	166ppin	推荐激励电压 Recommend excitation	10DC
零点平衡 Zero balance	±3%Emax	最大激励电压 Maximumu excitation	15V DC
零点温度影响 TCO	175ppin/℃	密封等级 Protection Class	IP65
输出温度影响 TC SPAN	15ppin/℃	材质 Construction	铝合金Aluminium
输入阻抗 Input resistance	404±15Ω	电缆 Cable	
输出阻抗 Output resistance	350±3Ω	Length:1m	
绝缘电阻 Insulation resistance	≥2000 MΩ	Diameter: φ 5mm	

**HANGZHOU GONGHENG WEIGHING EQUIPMENT CO.,LTD**

[www.hzgh-scales.com](http://www.hzgh-scales.com)

[hzghscale@yahoo.com](mailto:hzghscale@yahoo.com)