

L6E

Load Cell L6E



Products specification

- ◆L6E load cells are available in the capacities 50kg to 300kg.
- ◆Alumium constructionm with parallel beam.
- ◆Silicon adhesive sealed, surface anodized and anti-corrosion.
- ◆Integral structure and easy installation.
- ◆Suitable for pricing scales, platform scales and other electronic weighing devices.

Features

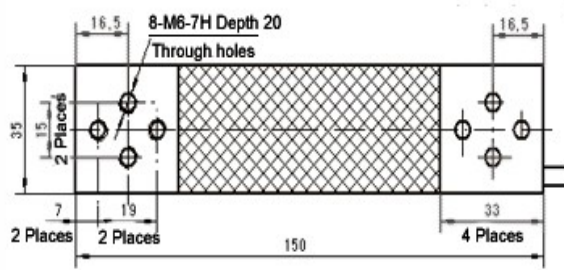
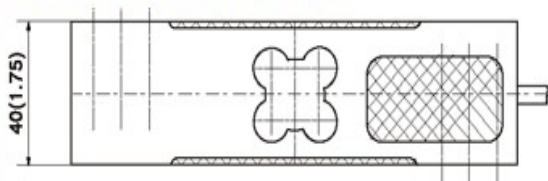
- ◆Capacit:50kg to 300kg .
- ◆High accuracy.
- ◆Max. platform size: 400x400mm.
- ◆With OIML approval.

Specifications

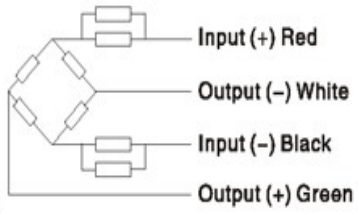
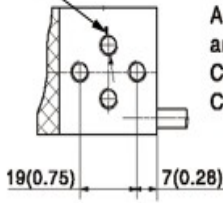
Capacity	(kg)	50/60/80/100/150/200/300		
Accuracy		C3D	C3	C3G
Approvals			OIML R60 C3	
Maximum number of verification intervals	n max	2500	3000	4000
Minimum load cell verification interval	v min	E _{max} /5000	E _{max} /7000	E _{max} /11000
Combined error	(%FS)	≤±0.030	≤±0.020	≤±0.015
Creep	(%FS/30min)	≤±0.020	≤±0.0167	≤±0.0125
Temperature effect on sensitivity	(%FS/10°C)	≤±0.021	≤±0.0175	≤±0.0131
Temperature effect on zero	(%FS/10°C)	≤±0.028	≤±0.020	≤±0.0127
Output sensitivity	(mv/v)	2.0±0.2		
Input resistance	(Ω)	406±6		
Output resistance	(Ω)	350±3		
Insulation resistance	(MΩ)	≥5000(50VDC)		
Zero balance	(%FS)	2		
Temperature,compensated	(°C)	-10~+40		
Temperature,operating	(°C)	-35~+65		
Excitation, Recommended	(V)	5~12(DC)		
Excitation,Max	(V)	18(DC)		
Safe overload	(%FS)	150		
Ultimate overload	(%FS)	300		
Corner correction		0.02% load value/100mm		

L6E

Outline Dimension mm(inch)



4-M6-7H Depth 20(0.79)
2 Through holes



Wiring:
Adopt a shielded, 4 conductor cable,
and cable jacket is PVC.
Cable length: 2 ± 0.1 m
Cable diameter: 5.3 ± 0.2 mm

HANGZHOU GONGHENG WEIGHING EQUIPMENT CO.,LTD

www.hzgh-scales.com

hzghscale@yahoo.com