

H8C
Load Cell H8C



Products specification

- ◆H8C load cells are available in the capacities 1Klb to 20Klb and 0.5t to 10t.
- ◆Alloy steel,sealed by adhesive inside,oil-proof,waterproof and anti-corrosion, suitable for all kinds of environment.
- ◆Single shear beam, easy for installation,suitable for electronic platform scales,hopper scales and other electronic weighing devices.
- ◆Safe and anti-explosive product,can be used in atrocious environment and hazardous areas.

Features

- ◆Capacity:1Klb to 20Klb and 0.5t to 10t.
- ◆High accuracy.
- ◆Alloy steel construction.
- ◆Low profile.
- ◆With OIML approval.
- ◆With NTEP approval.

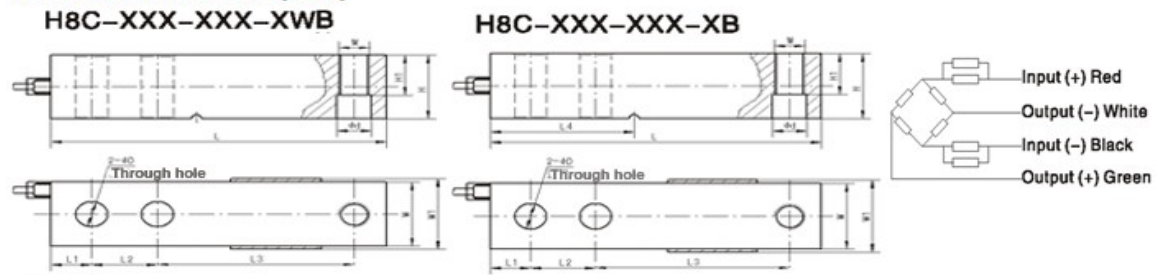
Specifications

Capacity	t	0.5/1/1.5/2/2.5/3/5/10				
	Klb	1/1.5/2/2.5/3/4/5/5KSE/7.5/10/15/20				
Accuracy class		C2	C3	C4	A5M	B10M
Approval		OIML R60 C3			III 5000 multiford	III L 10000 multiford
Maximum number of verification intervals	n max	2000	3000	4000	5000	10000
Minimum load cell verification interval	v min	E _{max} /5000	E _{max} /10000	E _{max} /14000	E _{max} /15000	E _{max} /10000
Combined error	(%FS)	≤±0.030	≤±0.020	≤±0.018	≤±0.026	≤±0.050
Creep	%FS/30min	≤±0.024	≤±0.016	≤±0.012	≤±0.017	≤±0.040
Temperature effect on sensitivity	(%FS/10°C)	≤±0.017	≤±0.011	≤±0.009	≤±0.013	≤±0.040
Temperature effect on zero	(%FS/10°C)	≤±0.023	≤±0.015	≤±0.010	≤±0.014	≤±0.020
Output sensitivity	(mv/v)	2.0 ±0.002			3.0±0.003	
Input resistance	(Ω)	350±3.5				
Output resistance	(Ω)	350±3.5				
Insulation resistance	(MΩ)	≥ 5000(100VDC)				
Zero balance	(%FS)	1.0				
Temperature, compensated	(°C)	-10~+40				
Temperature, allowed	(°C)	-35~+70				
Excitation, Recommended	(V)	5~12(DC)				
Excitation, Max	(V)	18(DC)				
Safe overload	(%FS)	150				
Ultimate overload	(%FS)	300				

H8C

Note: Output sensitivity of S1 type is 2.0 ± 0.002

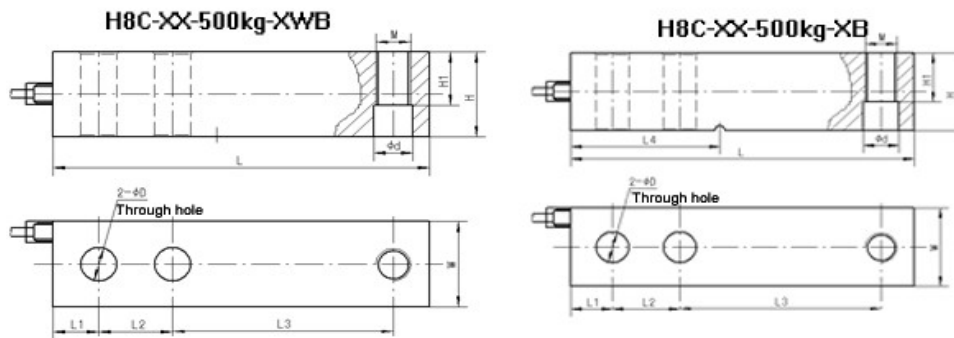
Outline Dimension mm(inch)



Wiring:

Adopt shielded, 4 conductor cable: $\phi 5\text{mm}$ Standard cable length: 4m(0.5t ~ 2t), 6m(2.5t ~ 10t, 1Kb ~ 20Klb)

Note: This product has the stress groove, is not suitable for Australia market. For Australia users please choose H8C-XX-XX-XW.



Capacity	L	L1	L2	L3	L4	H	H1	W	W1	D	d	M
0.5t, 1~2t 1~4K, 5KSE	130 (5.12)	15.8 (0.62)	25.4 (1.0)	76.2 (3.0)	54.2 (2.13)	31.8 (1.25)	15.8 (0.62)	31.8 (1.25)	34 (1.34)	13.5 (0.53)	13.5 (0.53)	M12×1.75 1/2 -20UNF
2.5~5t 5~10K	171.5 (6.75)	19.1 (0.75)	38.1 (1.5)	95.3 (3.75)	77.2 (3.04)	38.1 (1.5)	18.8 (0.74)	38.1 (1.5)	40 (1.57)	19.8 (0.78)	19.8 (0.78)	M18×1.5 3/4 -16UNF
10t, 20K	222.3 (8.75)	25.4 (1.0)	50.8 (2.0)	120.7 (4.75)	101.6 (4)	50.8 (2.0)	25.4 (1.0)	50.8 (2.0)	52.4 (2.06)	26.92 (1.06)	26 (1.02)	M24×2 1 -12UNF

HANGZHOU GONGHENG WEIGHING EQUIPMENT CO.,LTD

www.hzgh-scales.com

hzghscale@yahoo.com