



NFCL-R26xUB15 Single Color Outdoor Lamp Cluster

**Electro/Optical Characteristics If=20\*3mA Ta=25°C**

Part Number	Emitting Color	Peak Wavelength	Forward Voltage V <sub>F</sub>		Luminous Intensity I <sub>v</sub>		Viewing Angle
			Typ.	Max.	Min.	Typ.	2 θ 1/2
NFCL-R26xUB15-506C-L470	InGaN Ultra Blue	470	16.50	19.00		1200.0*15	45
Units		nm	V		mcd		degree

**Maximum Ratings Ta=25°C (Derate above 25°C)**

Characteristic	Test Condition	Symbol	UB		Units
Pulse Forward Current	0.1 duty cycle 0.1ms Pulse width	I <sub>FP</sub>	100		mA
DC Forward Current		I <sub>F</sub>	30		mA
Reverse Current	V <sub>R</sub> =10V	I <sub>R</sub>	10		μA
Power Dissipation		P <sub>D</sub>	110*15		mW
Operating Temperature		T <sub>OPR</sub>	-25 to +80		°C
Storage Temperature		T <sub>TSG</sub>	-40 to +85		°C
Lead soldering temperature			260		°C

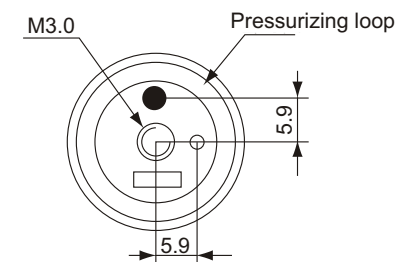
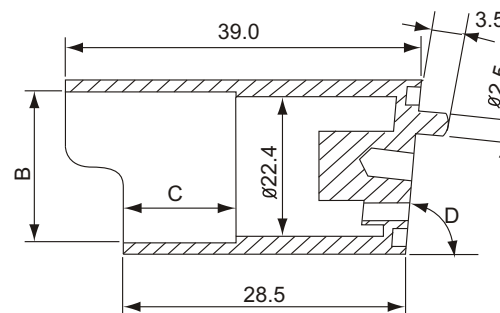
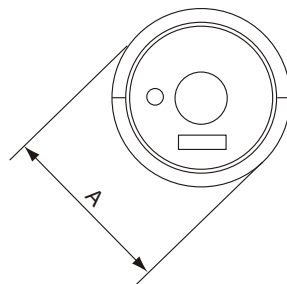


## NFCL-R26xUB15 Single Color Outdoor Lamp Cluster

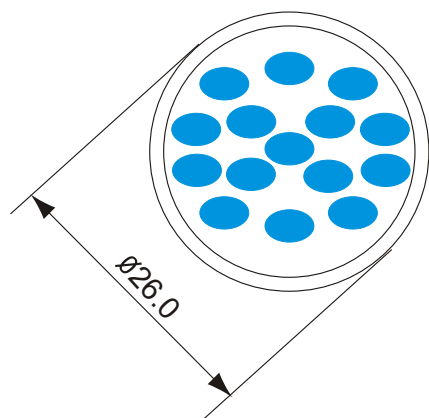
### PACKAGE DIMENSION

NFCL-R26x Series

SPEC.	A	B	C	D
R26A	26 <sup>+0.0</sup> <sub>-0.1</sub>	23.8	7.5	80°
R26B	26 <sup>+0.0</sup> <sub>-0.1</sub>	23.8	9.5	80°
R26C	26 <sup>+0.0</sup> <sub>-0.1</sub>	23.8	14.5	80°

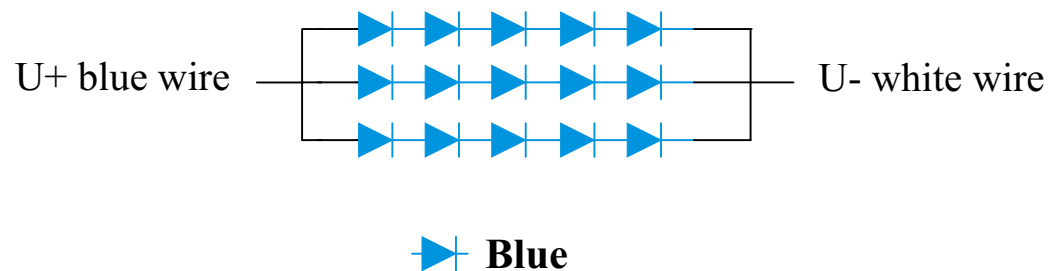


### INTERNAL CIRCUIT DIAGRAM



 **Blue**

Common Anode



Tolerance  $\pm 0.25\text{mm}$  unless stated