



2.30" (60.60mm) Φ 5.00mm 5*8 Bi-Color Dot Matrix Displays

Features:

- *High dot intensity
- *Wide viewing angle
- *Bi-colors
- *Black face White dot
- *RoHS compliant

Available option:

- *Alternative face and dot color
- *Cropped terminal pins
- *Available emitting color
- *Low current version

Electro/Optical Characteristics If=20mA Ta=25°C

Part Number Row Cathode Column Anode	Part Number Row Anode Column Cathode	Emitting Color	Peak Wavelength	Forward Voltage V _F /Dot		Luminous Intensity I _v /Dot	
				Typ.	Max.	Min.	Typ.
NFM-23581CDUG-11	NFM-23581DDUG-11	GaAlAs/GaAs DH Super-Red	660	1.80	2.20	22.0	28.0
		AlGaInP/GaAs Ultra Green	574	2.10	2.50	25.0	40.0
Units			nm	V		mcd	

Maximum Ratings Ta=25°C (Derate above 25°C)

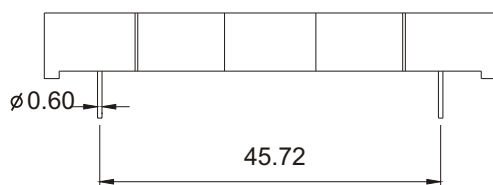
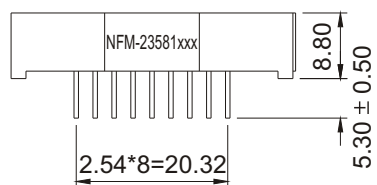
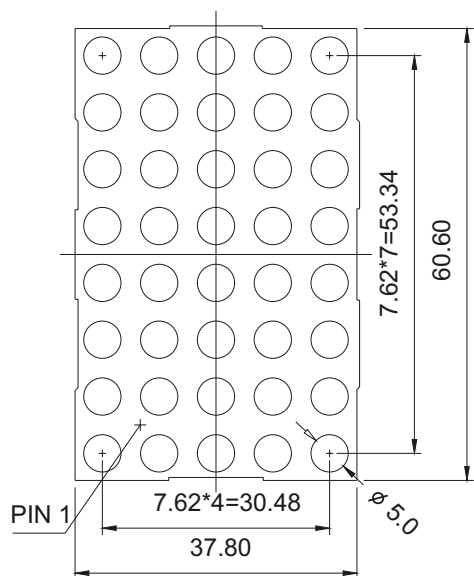
Characteristic	Test Condition	Symbol	UG	D				Units
Pulse Forward Current Per Dot	1/10 duty cycle 0.1ms Pulse width	I _{FP}	100	100				mA
DC Forward Current Per Dot		I _F	30	25				mA
Reverse Current Per Dot	V _R =5V	I _R	10	10				μA
Power Dissipation		P _D	75*40	60*40				mW
Operating Temperature		T _{OPR}					-40 to +80	°C
Storage Temperature		T _{TSG}					-40 to +85	°C
Lead soldering temperature	1.60mm from body maximum 3 seconds						260	°C

Checked	Chen N.H.	Approved	Jason Chen	Date	Dec/04/2006	PAGE 1 / 2
---------	-----------	----------	------------	------	-------------	------------



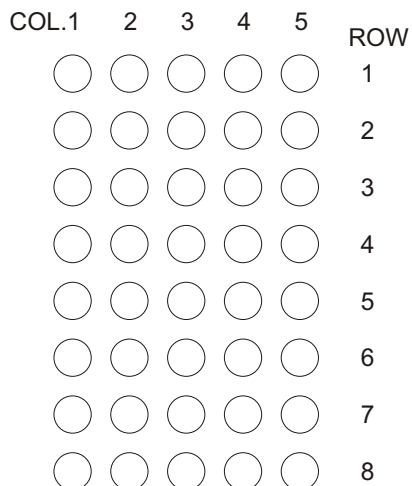
2.30" (60.60mm) Φ 5.00mm 5*8 Bi-Color Dot Matrix Displays

PACKAGE DIMENSION

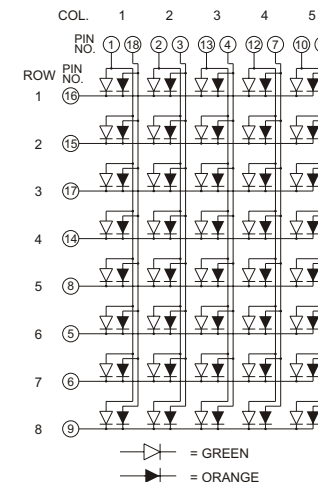


Tolerance ± 0.25 mm unless stated

INTERNAL CIRCUIT DIAGRAM



Row Cathode
Column Anode
NFM-23581CEG



Row Anode
Column Cathode
NFM-23581DEG

