

PANNEL TYPE: JMP150-36

Electrical specifications

Cell type	poly	
No. of cells per module	36 (6*6)	
Maximum power (Pmpp)	150W	Wp
Maximum power point voltage (Umpp)	18.36	V
Maximum power point current (Impp)	8.17	A
Short circuit current (Isc)	9.39	A
Open circuit voltage (Uoc)	21.96	V
Maximum system voltage	1000	V. DC
Voltage temperature coefficient	-0.29	%/K
current temperature coefficient	0.045	%/K
Module efficiency	17.80%	
Form factor	79%	

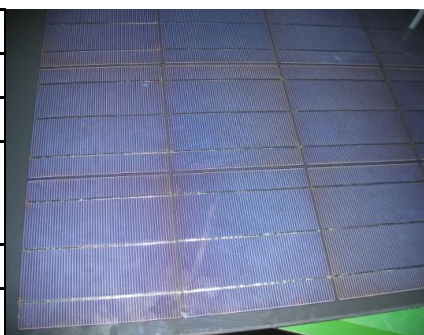
Under STC: Irradiance: 1000W/m², Cell temperature: 25°C, AM: 1.5

Mechanical specifications

Dimensions (h*w)	1120*980	mm
Thickness	6	mm
Weight	18	Kg

Materials

cells	6" black 3 string
Power cells (average-maxium)	4.16-4.39Wp
Cells efficiency	18.75%-20.00%
Glass	laminated secuirt, below 146.5kg/m ² by pressure
Back sheet	Tedlar foil
Junction box	PV-ZH009 with 6 by pass diodes, IP65
Cables	2*1m, 4mm ² sq solar cable, UV resistant
Connectors	MultiContact MC4



Warrenty

power	3%+-
warrenty (1)	90% of Pmpp after 10
warrenty (2)	80% of Pmpp after 20