

**Report Number: QIP-ASI111858**

**Audit Date :** 21 Dec., 2011  
**Expiry Date :** 20 Dec., 2012

This report is issued by Focus Technology Co., Ltd. (Made-in-China.com) and the supervising inspectorate (SGS-CSTC Standards Technical Services Co., Ltd.) to confirm that:

**Company Name :** Guangzhou Icesource Refrigeration Equipment Co., Ltd.  
 广州冰泉制冷设备有限责任公司

**Showroom :** <http://ice-maker-china.en.made-in-china.com/>

**Address :** No. 21, South Row, Factory of Shitou, East Line Road, Nancun Town, Panyu District, Guangzhou City, Guangdong, China

**Product :** Large Ice Cube Machine Series, Tube Ice Machine Series, Pure Ice Machine Series, Automatic Ice Block Machine Series, Large Ice Block Machine Series, Containerized Ice Block Machine, Flake Ice Machine Series, Ice Plate Machine Series, Bag Ice Machine Series.

has been on site audited for the Following Scope of Activity

1. General Information
2. Product Research & Development Capacity
3. Quality Management System and Product Certification
4. Production Capacity & Quality Control
5. Photos



**General Comments:**

“Guangzhou Icesource Refrigeration Equipment Co., Ltd.” is a manufacturer with 43staffs. This company established in year2010 which located in “No. 21, South Row, Factory of Shitou, East Line Road, Nancun Town, Panyu District, Guangzhou City, Guangdong, China”. The company was an OEM supplier but had its own product brands in domestic of China. Actual found the company occupied a land size about 1,500square meters. The company passed ISO9001 & ISO14000 quality management system and obtained CE Product test Certificate. The main product: Large Ice Cube Machine Series, Tube Ice Machine Series, Pure Ice Machine Series, Automatic Ice Block Machine Series, Large Ice Block Machine Series, Containerized Ice Block Machine, Flake Ice Machine Series, Ice Plate Machine Series, Bag Ice Machine Series.



Sign for and on behalf of  
 SGS-CSTC Standards Technical Services Co., Ltd.

This document is issued by the Company under its General Conditions of Service accessible at [http://www.sgs.com/terms\\_and\\_conditions.htm](http://www.sgs.com/terms_and_conditions.htm). Attention is drawn to the limitation of liability, indemnification and jurisdiction issues defined therein. Any holder of this document is advised that information contained hereon is solely limited to visual examination of the safely and readily accessible portions of the consignment and reflects the Company's findings at the time of its intervention only and within the limits of Client's instructions, if any. The Company's sole responsibility is to its Client and this document does not exonerate parties to a transaction from exercising all their rights and obligations under the transaction documents. Any unauthorized alteration, forgery or falsification of the content or appearance of this document is unlawful and offenders may be prosecuted to the fullest extent of the law.

Attention: To check the authenticity of testing /inspection report & certificate, please contact us at telephone: (86-755)83071443, or email: [CN.Doccheck@sgs.com](mailto:CN.Doccheck@sgs.com)

**Page No.: 1 of 11**

# SUPPLIER ASSESSMENT REPORT

Audited Company	Guangzhou Icesource Refrigeration Equipment Co., Ltd. 广州冰泉制冷设备有限责任公司
Audited Site:	No. 21, South Row, Factory of Shitou, East Line Road, Nancun Town, Panyu District, Guangzhou City, Guangdong, China
Representative of Audited Company:	Ms. Xiaoqin Gan

Consigner of Assessment	<b>Made-in-China.com</b>	
Audit Type	<input checked="" type="checkbox"/> Initial Audit <input type="checkbox"/> Re-audit	
Valid Date	From 21 Dec., 2011 to 20 Dec., 2012	Verify Report <a href="http://www.sgs.com">www.sgs.com</a>
Auditor	Justin Wu	Reviewed by Roger Wang

## CONTENTS

### Part A: General Information

Section 1: Company Overview  
Section 2: Human Resources

### Part B: Foreign Trade Capacity

Section 1: Export Overall Situation  
Section 2: Export Business Capacity  
Section 3: Supplier Management  
Section 4: After-sales Service Capacity

### Part C: Product Research & Development Capacity

Section 1: Product Research & Development Capacity

### Part D: Quality Management System and Product Certification

Section 1: Quality Management System(s) and Product Certification

### Part E: Production Capacity & Quality Control

Section 1: Production Capacity Section  
Section 2: Production Process Control  
Section 3: Company Development / Expansion Plan

### Part F: Financial Position

Section 1: Financial Data  
Section 2: Key Performance Indications  
Section 3: Banking  
Section 4: Product Insurance

### Part G: Working Environment & Energy Saving

Section 1: Working Environment  
Section 2: Energy Savings and Emission Reduction

### Part H: Photos

Section 1: Photos of Documents  
Section 2: Photos of Company

This document is issued by the Company under its General Conditions of Service accessible at [http://www.sgs.com/terms\\_and\\_conditions.htm](http://www.sgs.com/terms_and_conditions.htm). Attention is drawn to the limitation of liability, indemnification and jurisdiction issues defined therein. Any holder of this document is advised that information contained hereon is solely limited to visual examination of the safely and readily accessible portions of the consignment and reflects the Company's findings at the time of its intervention only and within the limits of Client's instructions, if any. The Company's sole responsibility is to its Client and this document does not exonerate parties to a transaction from exercising all their rights and obligations under the transaction documents. Any unauthorized alteration, forgery or falsification of the content or appearance of this document is unlawful and offenders may be prosecuted to the fullest extent of the law.

Attention: To check the authenticity of testing / inspection report & certificate, please contact us at telephone: (86-755)83071443, or email: [CN.Doccheck@sgs.com](mailto:CN.Doccheck@sgs.com)

Page No.: 2 of 11



## Part A: General Information

### Section 1: Company Overview

1.1 Legal Validity			
Does the company have a valid business license?	<input checked="" type="checkbox"/> Yes <input type="checkbox"/> No <input type="checkbox"/> Others	Registration Number	440126000062338
Year of established	9 Feb., 2010	Valid Date	23 Mar., 2013
Registered address	No. 21, South Row, Factory of Shitou, East Line Road, Nancun Town, Panyu District, Guangzhou City, Guangdong, China		
Actual address	No. 21, South Row, Factory of Shitou, East Line Road, Nancun Town, Panyu District, Guangzhou City, Guangdong, China		
Is the annual review done by local authority (Industrial & Commercial Bureau)?	This company passed annual reviewed in year 2011.		
Registered capital	Mr. Hongbo Yang		
Name of legal representative	RMB 1,000,000		
Business scope	Manufacture, Process, Sales: Refrigeration equipment; refrigeration equipment production technology research, development; Cargo, technology import and export.		
1.2 Basic Information			
Contact person	Mr. Hongbo Yang General Manager	Email	<a href="mailto:yicheng888@126.com">yicheng888@126.com</a>
Phone number	+86-20-61933488	Fax number	+86-20-61933408
URL/Web address	<a href="http://www.icemakerchina.com">http://www.icemakerchina.com</a> & <a href="http://www.cbfi-icemachine.com">http://www.cbfi-icemachine.com</a>		
Company type	<input checked="" type="checkbox"/> Manufacturer <input type="checkbox"/> Foreign trader		
Type of ownership	<input checked="" type="checkbox"/> Limited Company <input type="checkbox"/> Public Company <input type="checkbox"/> Joint Venture <input type="checkbox"/> State-Owned <input type="checkbox"/> Private Owner <input type="checkbox"/> Wholly foreign-owned enterprises		
Subsidiary company	N/A		
Products manufactured / sold scope	Large Ice Cube Machine Series, Tube Ice Machine Series, Pure Ice Machine Series, Automatic Ice Block Machine Series, Large Ice Block Machine Series, Containerized Ice Block Machine, Flake Ice Machine Series, Ice Plate Machine Series, Bag Ice Machine Series.		
1.3 Company Building Information			
According to:	<input type="checkbox"/> Land certificate <input type="checkbox"/> Real estate certificate <input checked="" type="checkbox"/> Lease agreement		
The land occupies	1,500 square meters.		
The offices occupy	300 square meters.		
The workshops occupy	1,000 square meters.		

This document is issued by the Company under its General Conditions of Service accessible at [http://www.sgs.com/terms\\_and\\_conditions.htm](http://www.sgs.com/terms_and_conditions.htm). Attention is drawn to the limitation of liability, indemnification and jurisdiction issues defined therein. Any holder of this document is advised that information contained hereon is solely limited to visual examination of the safely and readily accessible portions of the consignment and reflects the Company's findings at the time of its intervention only and within the limits of Client's instructions, if any. The Company's sole responsibility is to its Client and this document does not exonerate parties to a transaction from exercising all their rights and obligations under the transaction documents. Any unauthorized alteration, forgery or falsification of the content or appearance of this document is unlawful and offenders may be prosecuted to the fullest extent of the law.

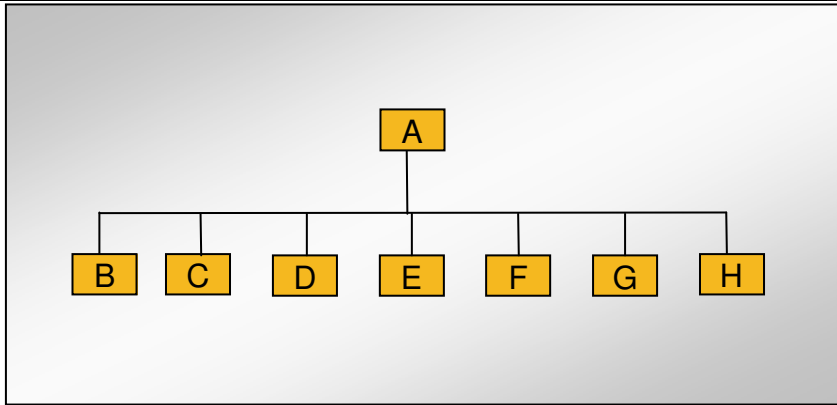
Attention: To check the authenticity of testing /inspection report & certificate, please contact us at telephone: (86-755)83071443, or email: [CN.Doccheck@sgs.com](mailto:CN.Doccheck@sgs.com)

Page No.: 3 of 11



**Section 2: Human Resources**

**2.1 Company Chart**



**2.2 Explanation of Code and Employee Details**

Code	Department	Number of employees
A	General Manager	1
B	Purchase Dept.	2
C	Warehouse Dept.	1
D	R&D Dept.	6
E	Production Dept.	22
F	Fin. Dept.	2
G	Sale Dept.	8
H	Admin. Dept.	1
<b>Number in total:</b>		<b>43</b>

**2.3 Key Staff**

Title	Full name	Education	Working experience for this trade / total experience
General Manager	Mr. Hongbo Yang	/	About 6years

This document is issued by the Company under its General Conditions of Service accessible at [http://www.sgs.com/terms\\_and\\_conditions.htm](http://www.sgs.com/terms_and_conditions.htm). Attention is drawn to the limitation of liability, indemnification and jurisdiction issues defined therein. Any holder of this document is advised that information contained hereon is solely limited to visual examination of the safety and readily accessible portions of the consignment and reflects the Company's findings at the time of its intervention only and within the limits of Client's instructions, if any. The Company's sole responsibility is to its Client and this document does not exonerate parties to a transaction from exercising all their rights and obligations under the transaction documents. Any unauthorized alteration, forgery or falsification of the content or appearance of this document is unlawful and offenders may be prosecuted to the fullest extent of the law.

Attention: To check the authenticity of testing /inspection report & certificate, please contact us at telephone: (86-755)83071443, or email: [CN.Doccheck@sgs.com](mailto:CN.Doccheck@sgs.com)



## Part C: Product Research & Development Capacity

1.1 Product Research & Development Capacity	
The amount of R&D and relevant working experience.	<input checked="" type="checkbox"/> within 1 year 2 staff <input checked="" type="checkbox"/> 1-5 years 2 staff <input checked="" type="checkbox"/> 5-10 years 2 staff <input type="checkbox"/> over 10 years staff Total 6 engineers
What is the main job responsibility for R&D engineers?	New product design and technical support.
Does the company have its own brand, or ODM, OEM, others?	The company was an OEM supplier but had its own product brands "CBF" ® in domestic of China.
Is there any relevant design input, output, review, verification and validation documentation available for auditor to review?	The relevant technical drawings lists were kept in document.
Is there any special software or instrument used by the R&D staffs during the design process of new products? If yes, please list the main software or instrument.	The software was AutoCAD, Photoshop, and Prote99.
Does the company have an effective design change control procedure in place?	The company provided some relevant records for reference.
Please list the patent certificates and qualification license.	The company had presented invention patent on 21 Dec., 2010. Certification No.: 1. 200710030591.7 2. 201010291146.8

This document is issued by the Company under its General Conditions of Service accessible at [http://www.sgs.com/terms\\_and\\_conditions.htm](http://www.sgs.com/terms_and_conditions.htm). Attention is drawn to the limitation of liability, indemnification and jurisdiction issues defined therein. Any holder of this document is advised that information contained hereon is solely limited to visual examination of the safely and readily accessible portions of the consignment and reflects the Company's findings at the time of its intervention only and within the limits of Client's instructions, if any. The Company's sole responsibility is to its Client and this document does not exonerate parties to a transaction from exercising all their rights and obligations under the transaction documents. Any unauthorized alteration, forgery or falsification of the content or appearance of this document is unlawful and offenders may be prosecuted to the fullest extent of the law.

Attention: To check the authenticity of testing /inspection report & certificate, please contact us at telephone: (86-755)83071443, or email: [CN.Doccheck@sgs.com](mailto:CN.Doccheck@sgs.com)



**Part D: Quality Management System and Product Certification**

1.1 Quality Management System and Product Certification	
<p>Has the company obtained a valid certificate for its quality management system? Such as ISO9001, QC080000 and etc.</p>	<p><b>ISO 9001 quality management certificate issued by “Shanghai Ingeer Certification Assessment Services Ltd.”</b>                      No.: 117 10 QU 0216-05 ROS                      Scope: Design, Production, Sales and service of Ice Machine and Auxiliary Equipment                      Valid date: 21 May 2010 to 20 May 2013</p> <p><b>ISO 14001 quality management certificate issued by “Shanghai Ingeer Certification Assessment Services Ltd.”</b>                      No.: 117 10 E1 0136 ROS                      Scope: The Related Environmental Management Activies of Design, Production, Sales and Service of Ice Machine.                      Valid date: 21 May 2010 to 20 May 2013</p>
<p>Is product certification done in terms of selling designation (UL for US, CCC for China, CE for Europe ...) at the company?</p> <p>I) Product certification list? if any                      II) Sample of product certification, if any (at least one of key products)?                      III) Copy of product certification sample (1-5 key products, if any)?</p>	<p><b>CE Product Certificate issued by Eport Compliance Laboratory Limited</b>                      1.No.: EPTH-VT-S0903809                      Product type: ICE BLOCK MACHINE                      Test Standard: EN 60335-1: 2002+A1: 2004+A11: 2004+A12: 2006+A2: 2006+A13: 2008;                      EN 60335-2-24: 2003+A11: 2004+A1: 2005+A2: 2007.                      Issue date: 18 Mar., 2009.</p> <p>1.No.: EPTH-VT-S0903806                      Product type: ICS CUBE MACHINE                      Test Standard: EN 60335-1: 2002+A1: 2004+A11: 2004+A12: 2006+A2: 2006+ A13: 2008;                      EN 60335-2-24: 2003+A11: 2004+A1: 2005+A2: 2007.                      Issue date: 18 Mar., 2009.</p>

This document is issued by the Company under its General Conditions of Service accessible at [http://www.sgs.com/terms\\_and\\_conditions.htm](http://www.sgs.com/terms_and_conditions.htm). Attention is drawn to the limitation of liability, indemnification and jurisdiction issues defined therein. Any holder of this document is advised that information contained hereon is solely limited to visual examination of the safely and readily accessible portions of the consignment and reflects the Company's findings at the time of its intervention only and within the limits of Client's instructions, if any. The Company's sole responsibility is to its Client and this document does not exonerate parties to a transaction from exercising all their rights and obligations under the transaction documents. Any unauthorized alteration, forgery or falsification of the content or appearance of this document is unlawful and offenders may be prosecuted to the fullest extent of the law.

Attention: To check the authenticity of testing /inspection report & certificate, please contact us at telephone: (86-755)83071443, or email: [CN.Doccheck@sgs.com](mailto:CN.Doccheck@sgs.com)

## Part E: Production Capacity & Quality Control

### Section 1: Production Capacity

#### 1.1 Production Workflow Chart

	→		→		→
Raw materials		Cut, Bend, Press		Weld	
	→		→		
Polish		Assembly		Function Test	

#### 1.2 Products Situation (Top three Product Categories)

Product Category	Capacity in Top Month	Average Capacity	Total in 2010
N/A			

#### 1.3 Main Facilities

Picture	Facility name	Brand or Country/Region of origin	Quantity
	CNC Pressing Machine	China	1
	CNC Bending Machine	China	1

This document is issued by the Company under its General Conditions of Service accessible at [http://www.sgs.com/terms\\_and\\_conditions.htm](http://www.sgs.com/terms_and_conditions.htm). Attention is drawn to the limitation of liability, indemnification and jurisdiction issues defined therein. Any holder of this document is advised that information contained hereon is solely limited to visual examination of the safely and readily accessible portions of the consignment and reflects the Company's findings at the time of its intervention only and within the limits of Client's instructions, if any. The Company's sole responsibility is to its Client and this document does not exonerate parties to a transaction from exercising all their rights and obligations under the transaction documents. Any unauthorized alteration, forgery or falsification of the content or appearance of this document is unlawful and offenders may be prosecuted to the fullest extent of the law.

Attention: To check the authenticity of testing /inspection report & certificate, please contact us at telephone: (86-755)83071443, or email: [CN.Doccheck@sgs.com](mailto:CN.Doccheck@sgs.com)

## Section 2: Production Process Control

2.1 Production Process Control		
Item	Content	Observations /Comments
1	Are the environmental conditions, such as tidiness and cleanliness being controlled and suitable for the operation performed?	<input type="checkbox"/> Very tidy <input checked="" type="checkbox"/> Normal <input type="checkbox"/> Need to improve <input type="checkbox"/> Very poor
2	Are the necessary items /documents provided at appropriate location and under control?	<input type="checkbox"/> Work Instructions /procedures <input type="checkbox"/> Workmanship standard /acceptance <input type="checkbox"/> Golden sample /Approval sample <input checked="" type="checkbox"/> Product picture <input type="checkbox"/> Verbal by workshop director
3	Are written instructions available for incoming material inspections /testing? Is the relevant record maintained?	<input type="checkbox"/> Has instructions and uniformly followed <input checked="" type="checkbox"/> Has instruction have some written records <input type="checkbox"/> Materials checked by storage staff
4	Are written inspections /testing instructions available for finished products? Is the relevant record maintained?	<input type="checkbox"/> Have instructions and uniformly followed <input checked="" type="checkbox"/> Have instruction have some written records <input type="checkbox"/> Finished product checked by QC staff
5	What type of inspection is used for finished products?	<input type="checkbox"/> Random inspection <input type="checkbox"/> Visual inspection <input type="checkbox"/> Function inspection <input checked="" type="checkbox"/> 100% inspection <input checked="" type="checkbox"/> Visual inspection <input checked="" type="checkbox"/> Function inspection
6	Are non-conforming units clearly marked/ segregated to prevent accidental dispatch?	<input type="checkbox"/> Marked and segregated <input checked="" type="checkbox"/> Segregated but not marked clearly <input type="checkbox"/> Not found on site
7	How are the non-conforming units handled?	<input checked="" type="checkbox"/> Repaired and re-inspection <input type="checkbox"/> Picked out <input type="checkbox"/> Used under control <input type="checkbox"/> Others

## Section 3: Company Development / Expansion Plans

3.1 Company Development / Expansion Plans		
Item	Company Development Action(s)	Timeframe
1	The company plan to participate in Domestic and HongKong fairs	2011-2012

This document is issued by the Company under its General Conditions of Service accessible at [http://www.sgs.com/terms\\_and\\_conditions.htm](http://www.sgs.com/terms_and_conditions.htm). Attention is drawn to the limitation of liability, indemnification and jurisdiction issues defined therein. Any holder of this document is advised that information contained hereon is solely limited to visual examination of the safely and readily accessible portions of the consignment and reflects the Company's findings at the time of its intervention only and within the limits of Client's instructions, if any. The Company's sole responsibility is to its Client and this document does not exonerate parties to a transaction from exercising all their rights and obligations under the transaction documents. Any unauthorized alteration, forgery or falsification of the content or appearance of this document is unlawful and offenders may be prosecuted to the fullest extent of the law.

Attention: To check the authenticity of testing /inspection report & certificate, please contact us at telephone: (86-755)83071443, or email: [CN.Doccheck@sgs.com](mailto:CN.Doccheck@sgs.com)

Page No.: 8 of 11





Part H: Photos

Section 1: Photos of Documents

1.1 Photos of Documents

<p><b>Description: Business License</b></p>	<p><b>Description: Lease Contract</b></p>
<p><b>Description: ISO14001 Certificate</b></p>	<p><b>Description: ISO9001 Certificate</b></p>
<p><b>Description: CE Product Test Certificate</b></p>	<p><b>Description: CE Product Test Certificate</b></p>

This document is issued by the Company under its General Conditions of Service accessible at [http://www.sgs.com/terms\\_and\\_conditions.htm](http://www.sgs.com/terms_and_conditions.htm). Attention is drawn to the limitation of liability, indemnification and jurisdiction issues defined therein. Any holder of this document is advised that information contained hereon is solely limited to visual examination of the safely and readily accessible portions of the consignment and reflects the Company's findings at the time of its intervention only and within the limits of Client's instructions, if any. The Company's sole responsibility is to its Client and this document does not exonerate parties to a transaction from exercising all their rights and obligations under the transaction documents. Any unauthorized alteration, forgery or falsification of the content or appearance of this document is unlawful and offenders may be prosecuted to the fullest extent of the law.

Attention: To check the authenticity of testing /inspection report & certificate, please contact us at telephone: (86-755)83071443, or email: [CN.Doccheck@sgs.com](mailto:CN.Doccheck@sgs.com)

**Section 2: Photos of Company**

**2.1 Photos of Company and Product Sample**

Description: Company Gate



Description: Company Brands



Description: Office



Description: Workshop



Description: Workshop



Description: Warehouse



This document is issued by the Company under its General Conditions of Service accessible at [http://www.sgs.com/terms\\_and\\_conditions.htm](http://www.sgs.com/terms_and_conditions.htm). Attention is drawn to the limitation of liability, indemnification and jurisdiction issues defined therein. Any holder of this document is advised that information contained hereon is solely limited to visual examination of the safely and readily accessible portions of the consignment and reflects the Company's findings at the time of its intervention only and within the limits of Client's instructions, if any. The Company's sole responsibility is to its Client and this document does not exonerate parties to a transaction from exercising all their rights and obligations under the transaction documents. Any unauthorized alteration, forgery or falsification of the content or appearance of this document is unlawful and offenders may be prosecuted to the fullest extent of the law.

Attention: To check the authenticity of testing /inspection report & certificate, please contact us at telephone: (86-755)83071443, or email: [CN.Doccheck@sgs.com](mailto:CN.Doccheck@sgs.com)



Description: Product Sample



Description: Product Sample



Description: Product Sample



Description: Product Sample



-- End of the Report --

This document is issued by the Company under its General Conditions of Service accessible at [http://www.sgs.com/terms\\_and\\_conditions.htm](http://www.sgs.com/terms_and_conditions.htm). Attention is drawn to the limitation of liability, indemnification and jurisdiction issues defined therein. Any holder of this document is advised that information contained hereon is solely limited to visual examination of the safely and readily accessible portions of the consignment and reflects the Company's findings at the time of its intervention only and within the limits of Client's instructions, if any. The Company's sole responsibility is to its Client and this document does not exonerate parties to a transaction from exercising all their rights and obligations under the transaction documents. Any unauthorized alteration, forgery or falsification of the content or appearance of this document is unlawful and offenders may be prosecuted to the fullest extent of the law.

Attention: To check the authenticity of testing /inspection report & certificate, please contact us at telephone: (86-755)83071443, or email: [CN.Doccheck@sgs.com](mailto:CN.Doccheck@sgs.com)