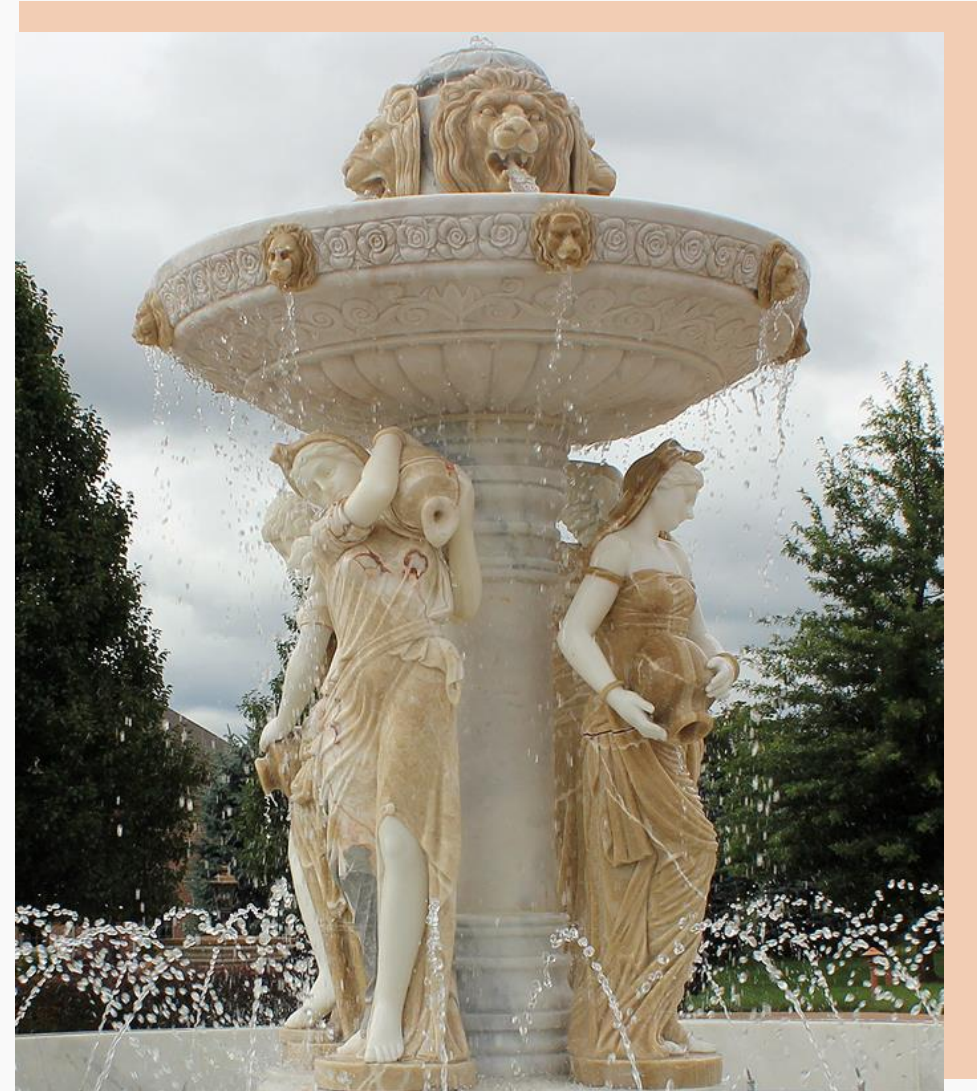


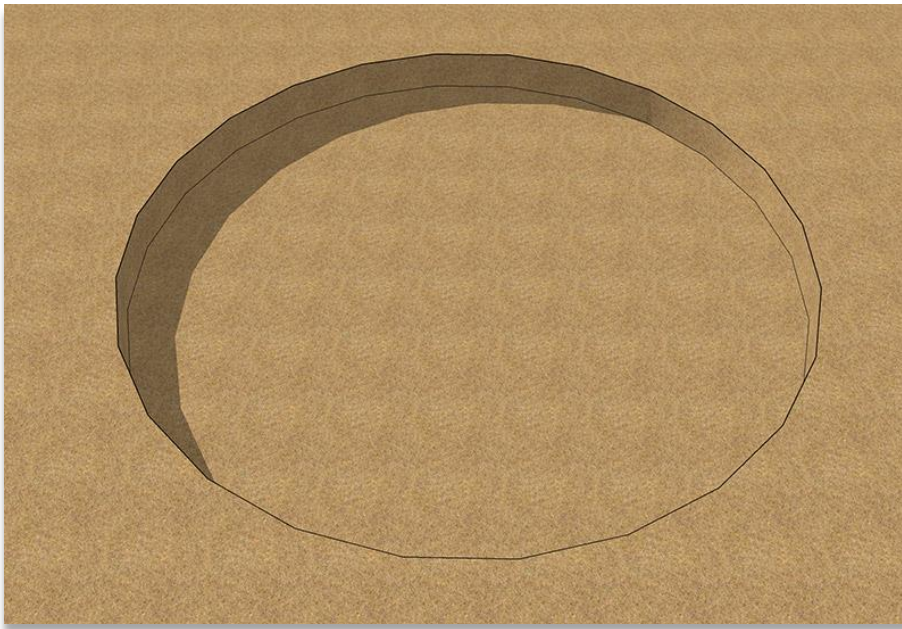
Steps of Water Fountain Installation

Presented by PFM Team



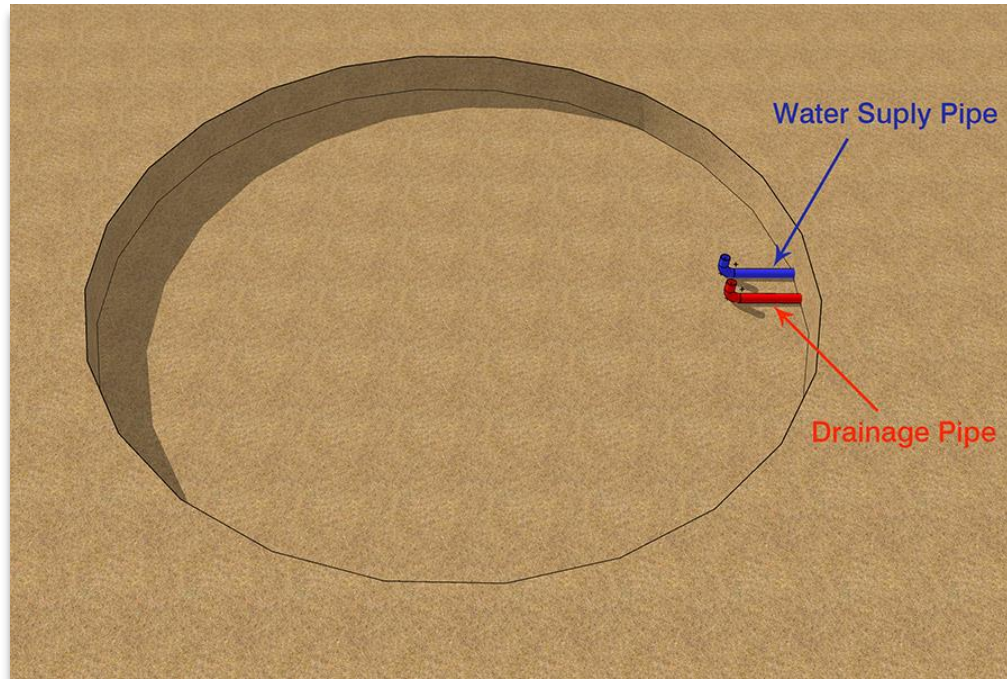
Step 1:

Preliminary Preparation and Earth Excavation



Survey and setting out after the preparation work. According to the geotechnical and foundation design considerations, start the construction works.

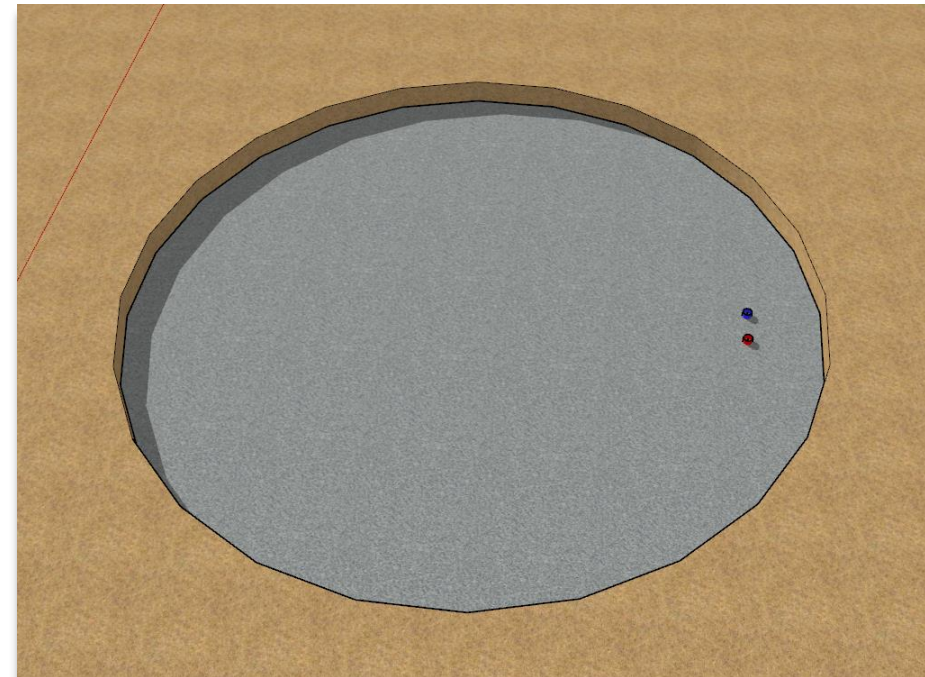
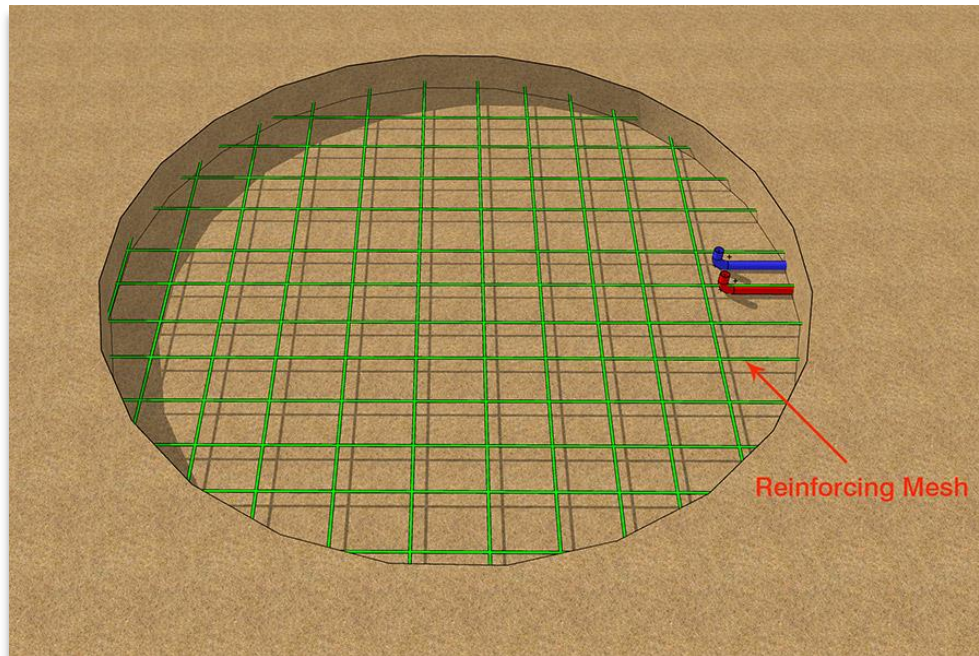
The base must be tamped down after the earth excavation, keeping it clean and grading.



Step 2:

Water Supply and Drainage Installation

According to the tank size of fountain, place the suitable water pipes.



Step 3:

Form Works And Pouring Of Concrete



01. Steel reinforcement and concrete pouring.



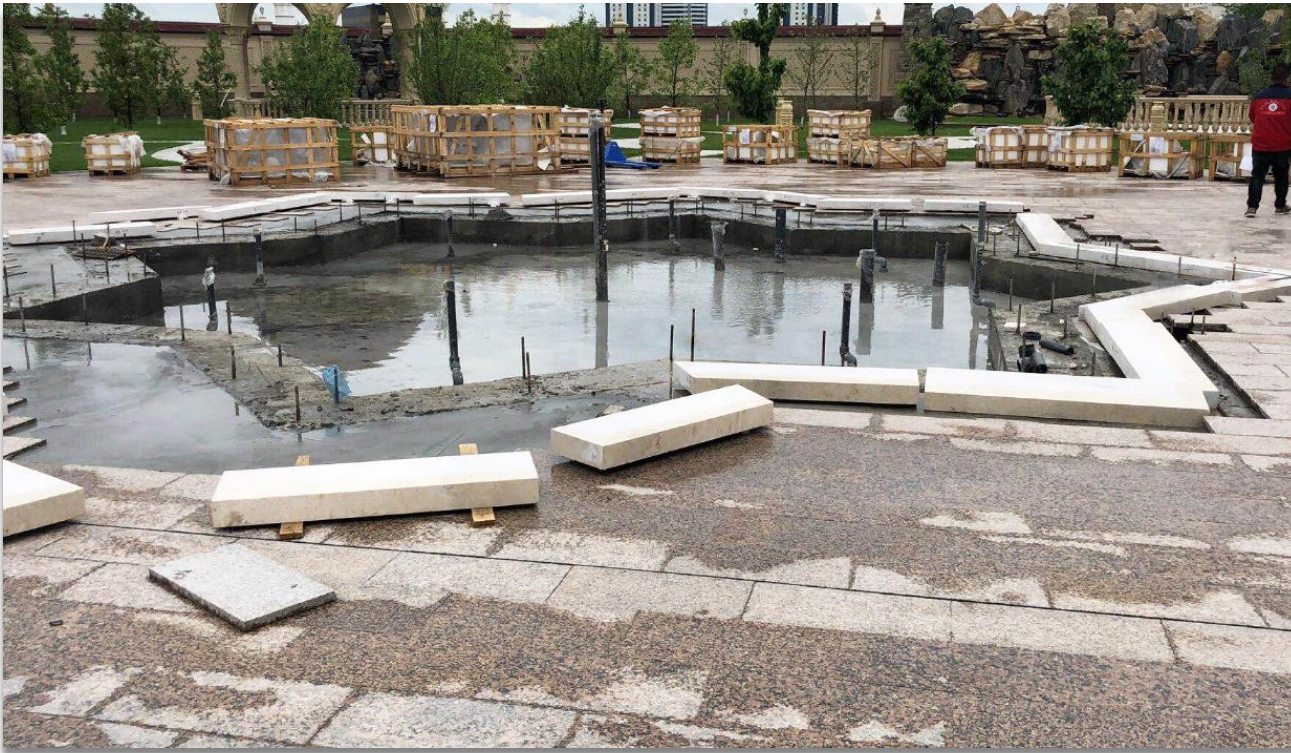
02. Form works must be strictly as the construction and structure drawings .



03. Cement pouring needs to be done one time, and it needs to viberating during the operation.

Step 4:

Waterproof Construction

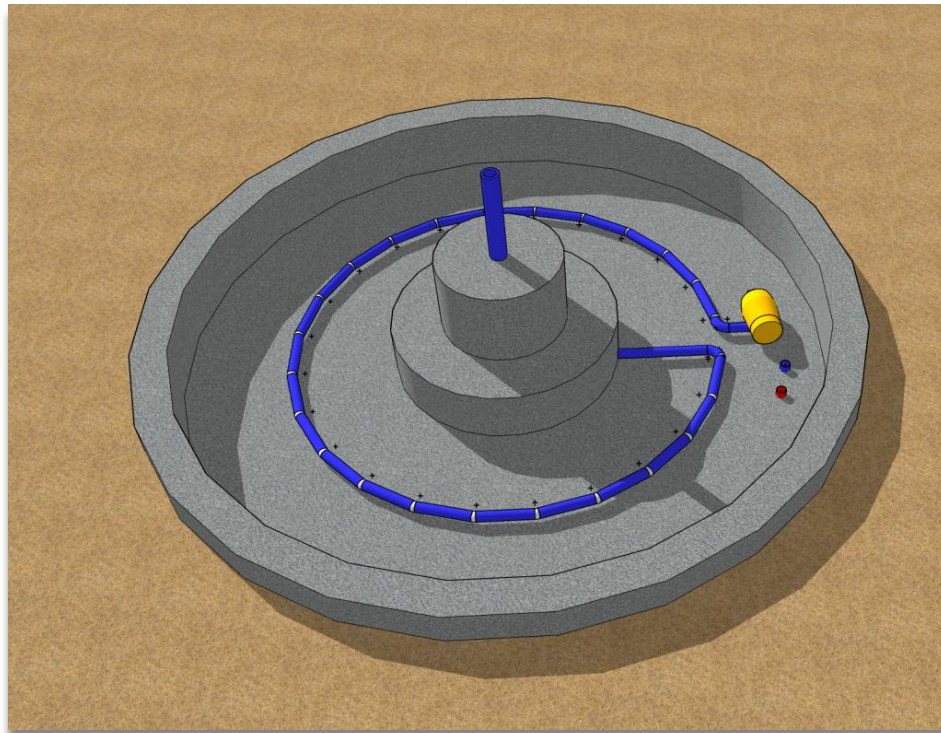


- The base should be leveled and strong, and free from defects like cracks, hollowing and sugaring.
- Waterproof painting needs to be applied twice, to make sure the waterproof is correctly done, we need to leave the water for some time to test the result.

Step 5:

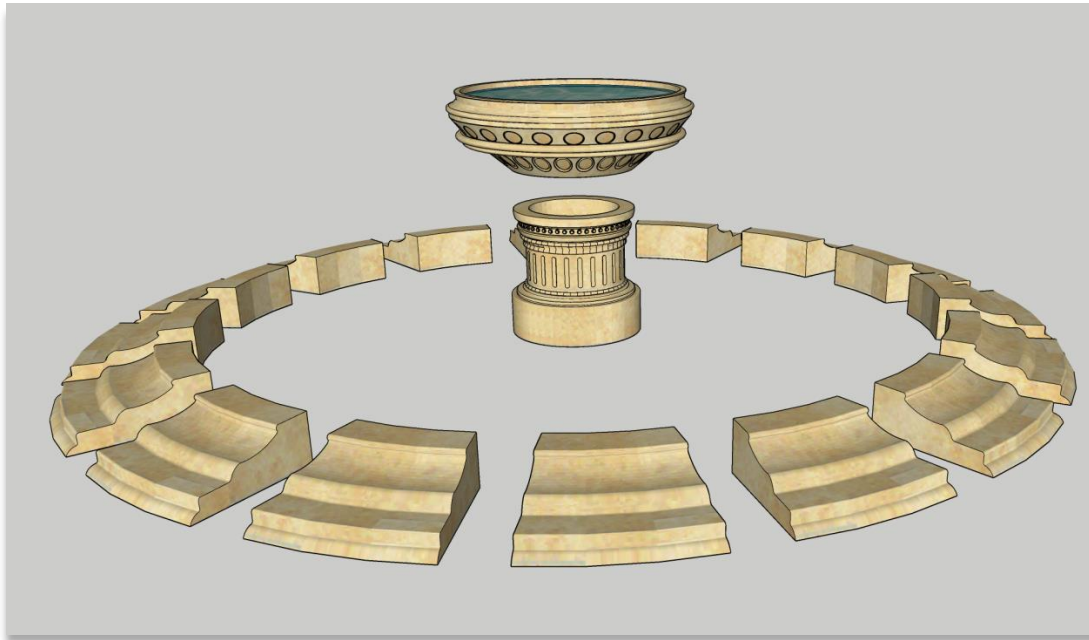
Pipes And Wires Setting

Set water pipes and electric wires as design.

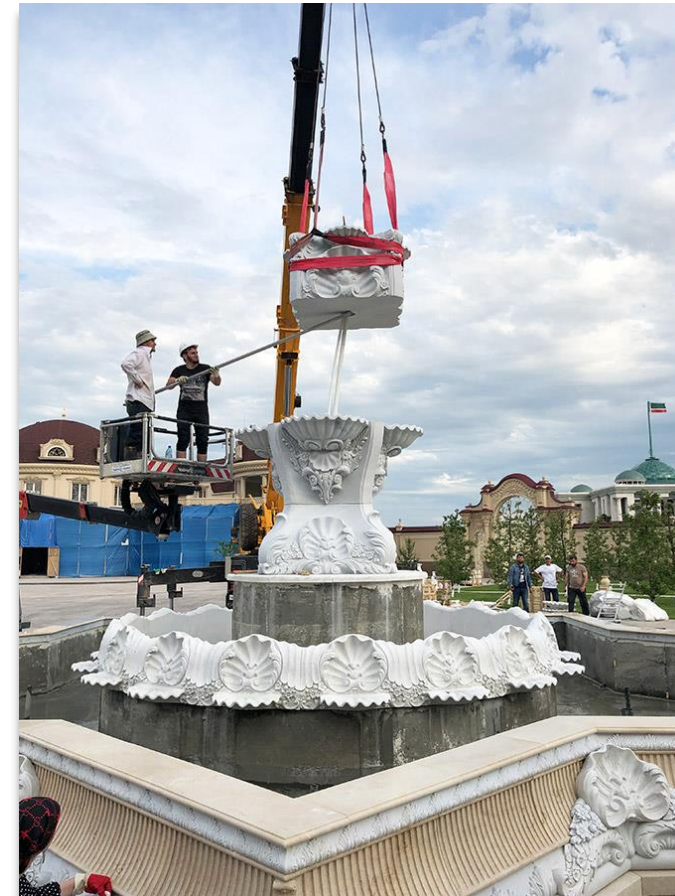


Step 6:

Decorative Stone Installation



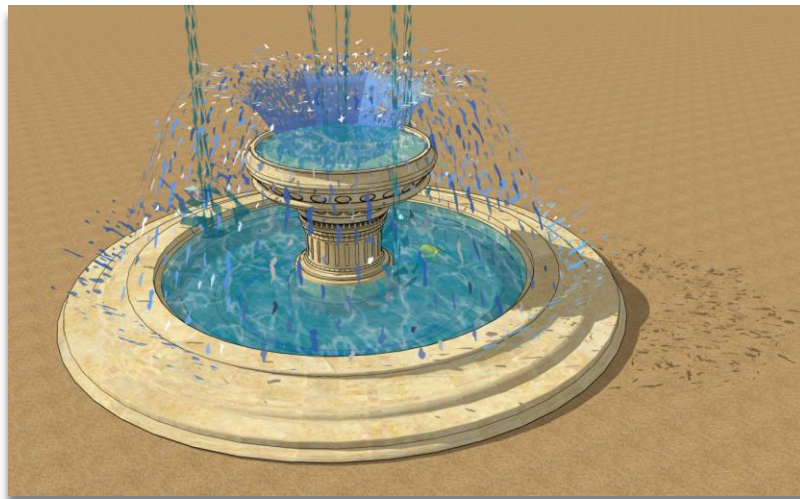
Pre-assembled the stone according to number of production drawing. Every stone piece connect with cement, and sealed the gaps with stone glue.



According to the drawing number, find the center point of the fountain, install it gradually from bottom to top, and ensure the level of stone.

Step 7:

Equipments Installation



If you have more questions, please feel free to contact us at susan@marblelegend.com

Tel: + 86-13434304906



PFM Team will help you in each step of the way to reach your dream space.