



ZHANJIANG BOARDWAY BUILDING MATERIAL CO., LTD.

ROOM 1808, PHASE 3 CUIDIWAN, NO.2 JUNMIN RD
ZHANJIANG, GUANGDONG, CHINA P.c.524044
Tel.: +86 759 3320922 Fax: +86 759 3320922
Email: info@boardwaybuilding.com

Die-cut Products

What we have for you ?

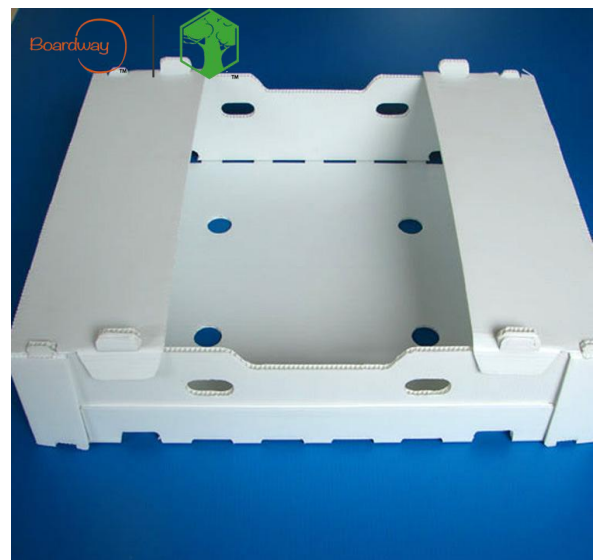


The raw material of Boardway die-cut products could be plastic honeycomb sheet, plastic corrugated sheet and other plastic sheets.

BOARDWAY processing center has strong processing capacity. With various processing machines and tools, clean and spacious space, excellent design team, Skilled workers, which can meet various processing requirement.

What is the advantage ?

- Waterproof;
- Lightweight Easy To Fabricate;
- Low Flammability;
- Anti UV and snow;
- Non-toxic, pollution-free, Environment protection, Recyclable;
- Nice outlook and durable.



TM



TM

ZHANJIANG BOARDWAY BUILDING MATERIAL CO., LTD.

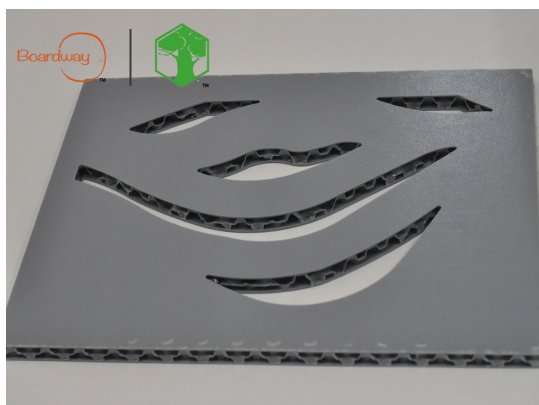
ROOM 1808, PHASE 3 CUIDIWAN, NO.2 JUNMIN RD
 ZHANJIANG, GUANGDONG, CHINA P.c.524044
 Tel.: +86 759 3320922 Fax: +86 759 3320922
 Email: info@boardwaybuilding.com

What we have for die-cut products ?



Our final finished products

— plastic
honeycomb sheet
products



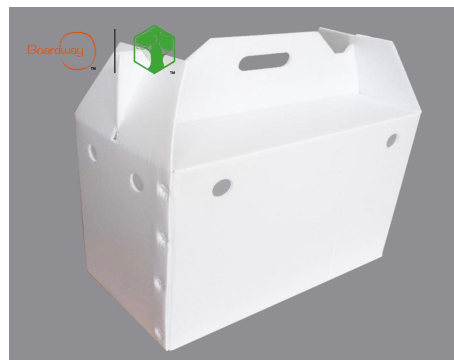
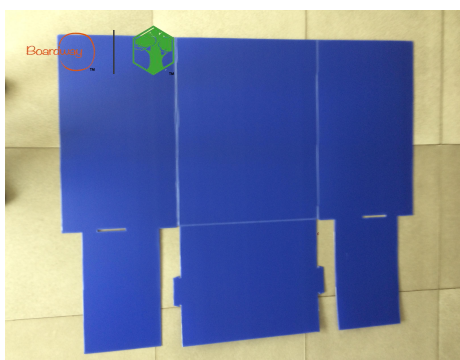
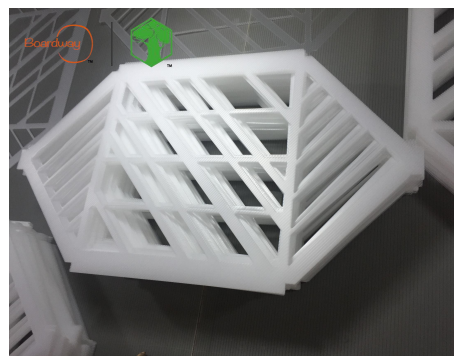
TM



ZHANJIANG BOARDWAY BUILDING MATERIAL CO., LTD.

ROOM 1808, PHASE 3 CUIDIWAN, NO.2 JUNMIN RD
 ZHANJIANG, GUANGDONG, CHINA P.c.524044
 Tel.: +86 759 3320922 Fax: +86 759 3320922
 Email: info@boardwaybuilding.com

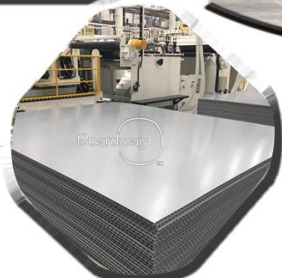
— plastic
 corrugated sheet
 products



Quality is our culture



PRODUCTION
 LINE





ZHANJIANG BOARDWAY BUILDING MATERIAL CO., LTD.

ROOM 1808, PHASE 3 CUIDIWAN, NO.2 JUNMIN RD
ZHANJIANG, GUANGDONG, CHINA P.c.524044
Tel.: +86 759 3320922 Fax: +86 759 3320922
Email: info@boardwaybuilding.com



TM



ZHANJIANG BOARDWAY BUILDING MATERIAL CO., LTD.

ROOM 1808, PHASE 3 CUIDIWAN, NO.2 JUNMIN RD
 ZHANJIANG, GUANGDONG, CHINA P.c.524044
 Tel.: +86 759 3320922 Fax: +86 759 3320922
 Email: info@boardwaybuilding.com

Certified by

We tested our PP plastic honeycomb sheet every year By SGS,ROSH, E-MARK international Lab and Chinese CCC, GQT, CMA, CNAS etc. Pls. feel free to contact with us for more details about our testing report and certificate.



- SGS Formaldehyde Content Testing
- SGS RoHS testing for Pb,Cd, Hg, CrVI, PBBs, PBDEs and Phthalate
- SGS testing for Smoke Toxicity
- SGS Flammability Testing
- SGS testing for Aging
- Testing for Fire Behavior
- CCC Certificate for China Compulsory Product Certification
- CCC Fire Behavior Testing Application for Automotive interior parts
- Testing for Eight kinds of Specific Element Migration (Sb, As, Ba, Cd, Cr, Pb, Hg, Se)
- Ect.

Meeting and exhibition

